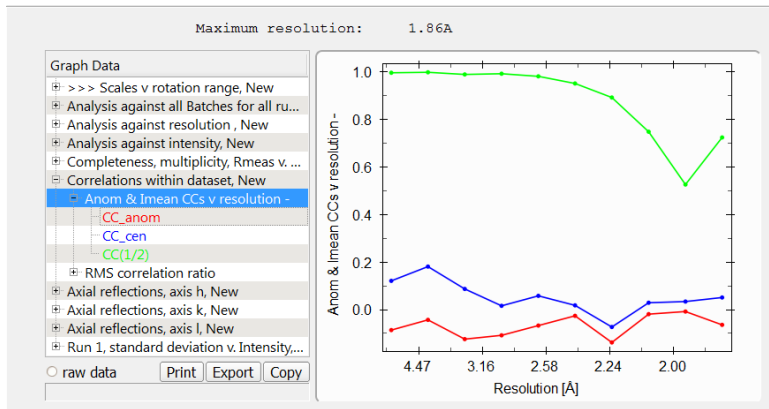


	2.33 Å			2.3 Å			2.2 Å			2.1 Å		
	Overall	InnerShell	OuterShell	Overall	InnerShell	OuterShell	Overall	InnerShell	OuterShell	Overall	InnerShell	OuterShell
Low resolution limit	44.15	44.15	2.46	44.15	44.15	2.42	44.15	44.15	2.32	44.15	44.15	2.21
High resolution limit	2.33	7.37	2.33	2.3	7.27	2.3	2.2	6.96	2.2	2.1	6.64	2.1
<b>Rmerge</b>	<b>0.114</b>	<b>0.071</b>	<b>0.346</b>	<b>0.116</b>	<b>0.071</b>	<b>0.378</b>	<b>0.137</b>	<b>0.072</b>	<b>0.577</b>	<b>0.149</b>	<b>0.072</b>	<b>0.811</b>
Rmerge in top intensity bin	0.068	-	-	0.069	-	-	0.07	-	-	0.072	-	-
Rmeas (within I+/I-)	0.124	0.077	0.376	0.126	0.078	0.41	0.149	0.078	0.628	0.162	0.079	0.881
Rmeas (all I+ & I-)	0.124	0.077	0.376	0.126	0.078	0.41	0.149	0.078	0.628	0.162	0.079	0.881
Rpim (within I+/I-)	0.047	0.031	0.144	0.048	0.031	0.157	0.057	0.031	0.244	0.062	0.031	0.341
Rpim (all I+ & I-)	0.047	0.031	0.144	0.048	0.031	0.157	0.057	0.031	0.244	0.062	0.031	0.341
Fractional partial bias	-0.055	-0.075	-0.026	-0.054	-0.075	-0.007	-0.062	-0.073	-0.198	-0.061	-0.072	0.017
Total number of observations	387122	12411	55564	402120	12898	57657	453250	14832	60601	519551	17035	73898
Total number unique	56356	1963	8121	58547	2035	8427	66730	2319	9600	76553	2646	11046
<b>Mean(I)/sd(I)</b>	<b>11.4</b>	<b>19.4</b>	<b>5.4</b>	<b>11</b>	<b>19.1</b>	<b>4.9</b>	<b>8.7</b>	<b>15.5</b>	<b>3.4</b>	<b>8.1</b>	<b>15.8</b>	<b>2.4</b>
<b>Mn(I) half-set correlation CC(1/2)</b>	<b>0.994</b>	<b>0.994</b>	<b>0.92</b>	<b>0.994</b>	<b>0.994</b>	<b>0.918</b>	<b>0.991</b>	<b>0.989</b>	<b>0.89</b>	<b>0.99</b>	<b>0.987</b>	<b>0.762</b>
Completeness	100	99.6	100	100	99.6	100	99.9	99.6	99.7	99.9	99.7	100
Multiplicity	6.9	6.3	6.8	6.9	6.3	6.8	6.8	6.4	6.3	6.8	6.4	6.7
Anomalous completeness	100	99.9	100	100	99.9	100	99.8	99.9	98.8	99.8	99.9	99.9
Anomalous multiplicity	3.5	3.6	3.5	3.5	3.6	3.5	3.5	3.7	3.2	3.5	3.7	3.4
DelAnom correlation between half-sets	-0.095	-0.129	-0.043	-0.081	-0.091	-0.051	-0.104	-0.07	-0.161	-0.113	-0.073	-0.025
Mid-Slope of Anom Normal Probability	0.901	-	-	0.903	-	-	0.833	-	-	0.867	-	-

	2 Å			1.861 Å		
	Overall	InnerShell	OuterShell	Overall	InnerShell	OuterShell
Low resolution limit	44.15	44.15	2.11	44.15	44.15	1.96
High resolution limit	2	6.32	2	1.86	5.88	1.86
<b>Rmerge</b>	<b>0.162</b>	<b>0.072</b>	<b>0.839</b>	<b>0.189</b>	<b>0.072</b>	<b>1.573</b>
Rmerge in top intensity bin	0.073	-	-	0.075	-	-
Rmeas (within I+/I-)	0.176	0.078	0.912	0.205	0.078	1.717
Rmeas (all I+ & I-)	0.176	0.078	0.912	0.205	0.078	1.717
Rpim (within I+/I-)	0.067	0.031	0.352	0.079	0.031	0.676
Rpim (all I+ & I-)	0.067	0.031	0.352	0.079	0.031	0.676
Fractional partial bias	-0.062	-0.071	-0.098	-0.064	-0.069	-0.265
Total number of observations	599514	19672	85756	720451	24493	86008
Total number unique	88458	3038	12766	107430	3746	13749
<b>Mean(I)/sd(I)</b>	<b>7.1</b>	<b>15</b>	<b>2.2</b>	<b>5.9</b>	<b>14.8</b>	<b>0.8</b>
<b>Mn(I) half-set correlation CC(1/2)</b>	<b>0.99</b>	<b>0.987</b>	<b>0.582</b>	<b>0.991</b>	<b>0.994</b>	<b>0.722</b>
Completeness	100	99.7	100	98.1	99.8	87.1
Multiplicity	6.8	6.5	6.7	6.7	6.5	6.3
Anomalous completeness	99.8	99.9	99.9	97.7	99.9	85.5
Anomalous multiplicity	3.5	3.7	3.4	3.4	3.6	3.2
DelAnom correlation between half-sets	-0.105	-0.151	-0.008	-0.089	-0.088	-0.066
Mid-Slope of Anom Normal Probability	0.869	-	-	0.876	-	-

## Scala Output, maximum resolution 1.861 Å



## Scala Output, maximum resolution 2.0 Å

