

Terry Loane
ALT Open Education
Special Interest Group

ASSOCIATION
FOR LEARNING
TECHNOLOGY



Open Education and ALT



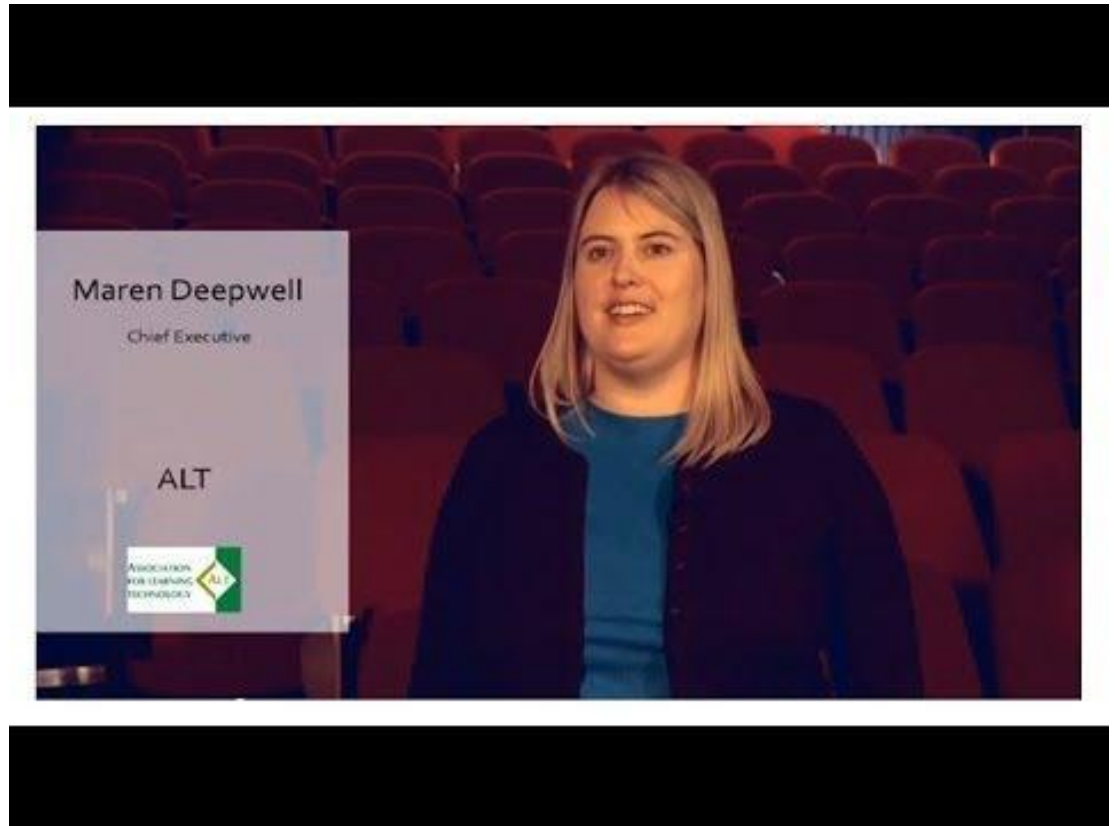
29 September 2015, CLA



About ALT, the Association for Learning Technology

go.alt.ac.uk/join-ALT

- ◇ Independent, self-funded charity
- ◇ UK's leading membership organisation in the learning technology field
- ◇ Improve practice, promote research, and influence policy



[Link to short film](#)

Key facts

- ◇ ALT was established in 1993;
- ◇ ALT has 1600+ individual and 200+ organisational members;
- ◇ ALT works across sectors including Further Education, Higher Education and research;
- ◇ ALT has an international community.

Three-year strategy 2014-2017



Strategic aims:

- ◇ Intelligent use of learning technology
- ◇ Research and practice
- ◇ Strategy and policy
- ◇ Representing members
- ◇ Leadership and professional development
- ◇ Communicating

<http://go.alt.ac.uk/1rAgYSW>

Policy in the making: FELTAG and ETAG

Across sectors: the Education Technology Action Group

Education Technology Action Group: our reflections

At the beginning of 2014, Ministers from DfE and BIS set up the Education Technology Action Group (ETAG). We are an independent group and we were asked to advise on how digital technology might empower teachers and learners by enabling innovation across schools, further education and higher education sectors for the benefit of students, employers and the wider economy. The group is chaired by Stephen Heppell who has authored the approach presented here on the basis of contributions from other ETAG members.

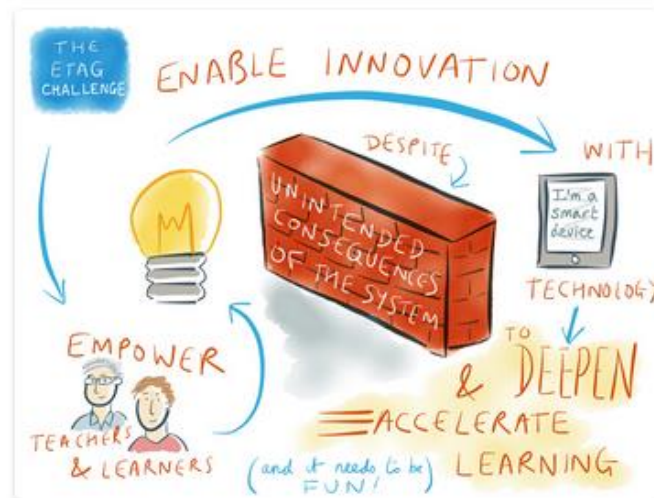
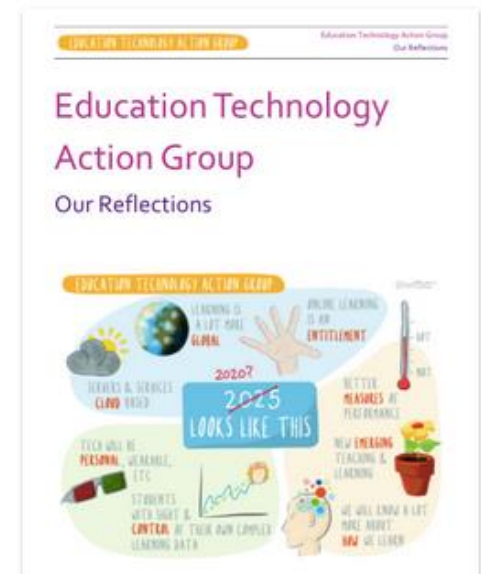


Figure 1 - The ETAG challenge, by ETAG's Bryan Mathers

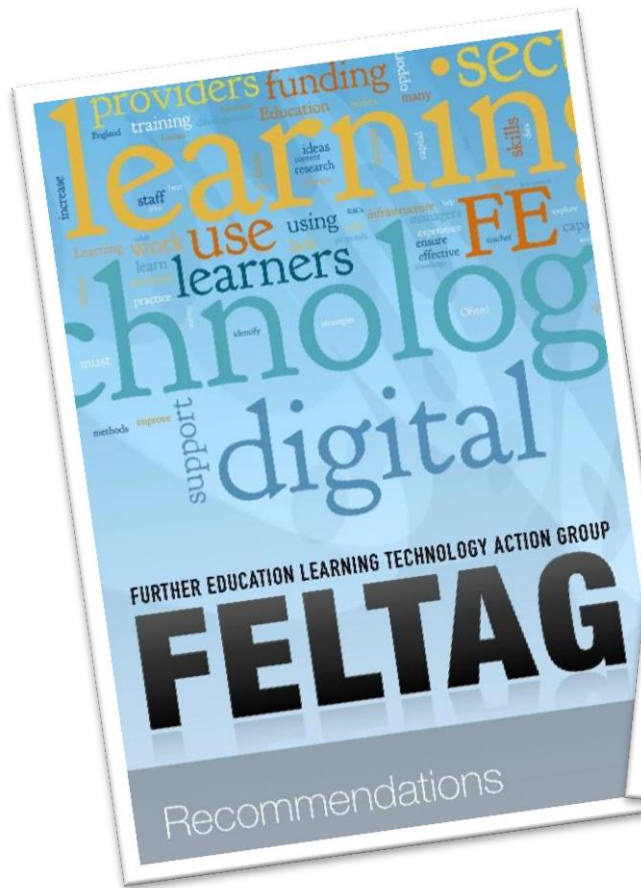
DOWNLOAD THE ETAG REPORT



<http://etag.report/>

Further Education Learning Technology Action Group - FELTAG

Paths forward to a digital future for Further Education and Skills
#feltag



<http://feltag.org.uk/>

Open data

Open University

Open access

Open educational resources
(JORUM, MERLOT)

Open text books

Open science

Open Licenses
(GNU, Creative Commons)

Open courseware
(OCW)

Open badges
(for your digital back pack)

GLOBAL OPEN EDUCATION

Open source

“Massive” open online courses
MOOCS
(Coursera, MITx, EDX, Futurelearn,
DS106, Rhizomatic Learning, Lumen
Learning, CCK08.....)







Open practices

Open courses

Open research

Open publishing

<http://creativecommons.org>

	CC Symbol	Description
1		[BY] By Attribution Permits all uses of the original work, as long as it is attributed to the original author (Note: Attribution is in all six licences)
2		[BY-SA] By Attribution – Share Alike As above, but any derivative work must also use a similar license, hence “Share Alike”
3		[BY-ND] By Attribution – No Derivatives Licensed works are free to use / share with attribution, but does not permit derivative works from the original
4		[BY-NC] By Attribution – Non-Commercial Licensed works are free to use / share / remix with attribution, but does not permit commercial use of the original work
5		[BY-NC-SA] By Attribution – Non-commercial – Share Alike Does not permit commercial use of the original work, and any derivatives from it must use a similar licence
6		[BY-NC-ND] By Attribution – Non-Commercial – No Derivatives Does not permit any commercial use or derivatives of the original work. <i>Note: this is the most restrictive of CC licenses, and is often regarded as a “free advertising” license</i>

WHAT IS OPEN?

WHAT IS OPEN?

- ◇ Reducing the barriers to accessing education, knowledge and research
- ◇ Using technology to do so

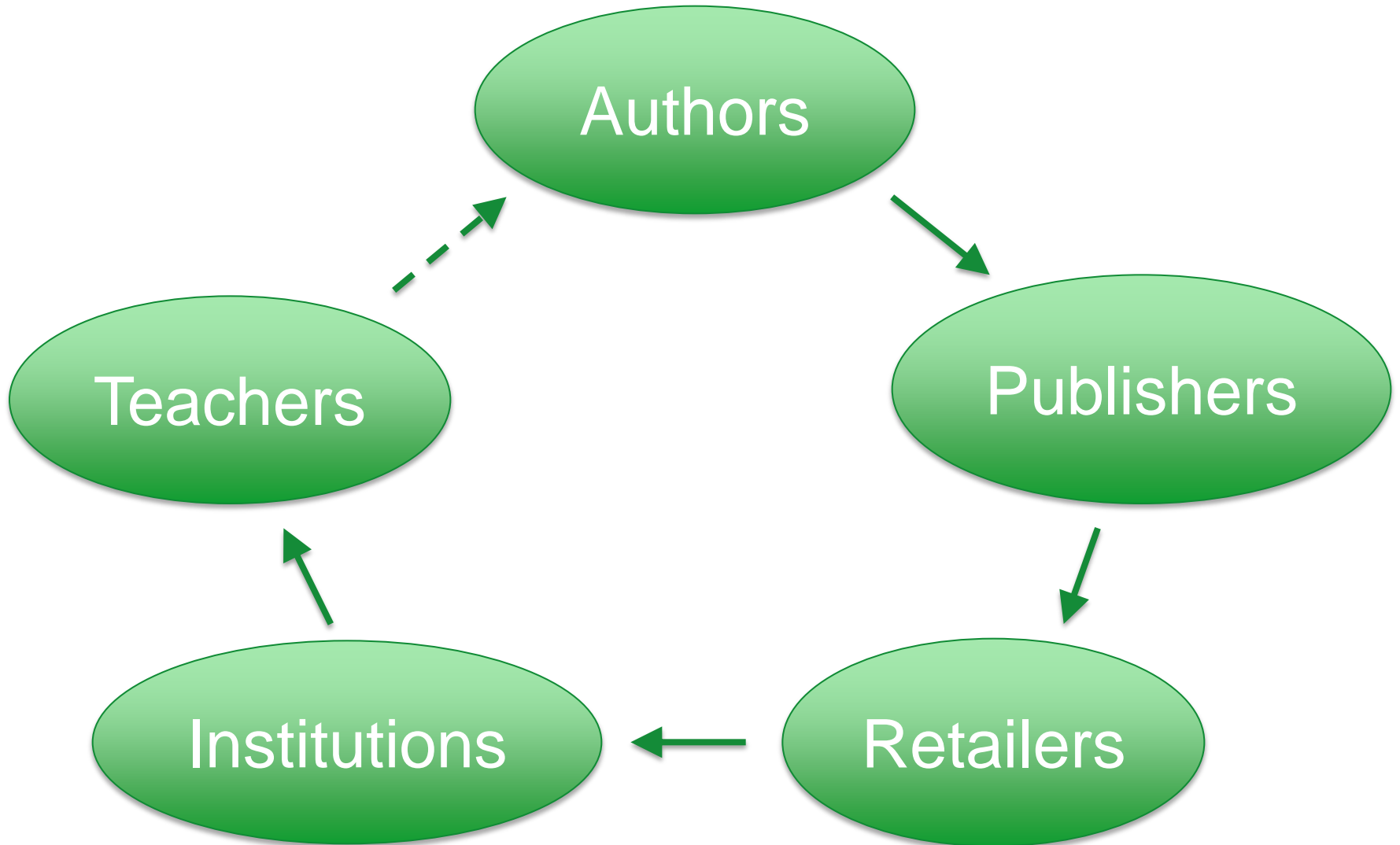
ALT Open Education Special Interest Group



- ◇ The **Open Education SIG (OESIG)** was established in March 2012.
- ◇ Education has the power to transform lives but too often access is restricted. Among those excluded are those who lack the right qualifications, who cannot pay the fees or who are unable to accommodate a fixed schedule. The Open Education movement seeks to remove barriers to education by freely sharing educational resources and adopting open educational practices.
- ◇ The remit of this SIG is to support, develop, sustain and influence policy in open education.

<https://www.alt.ac.uk/get-involved/special-interest-groups/oesig>

Twentieth century model



Three 'inventions' that changed everything

◇ 1970s

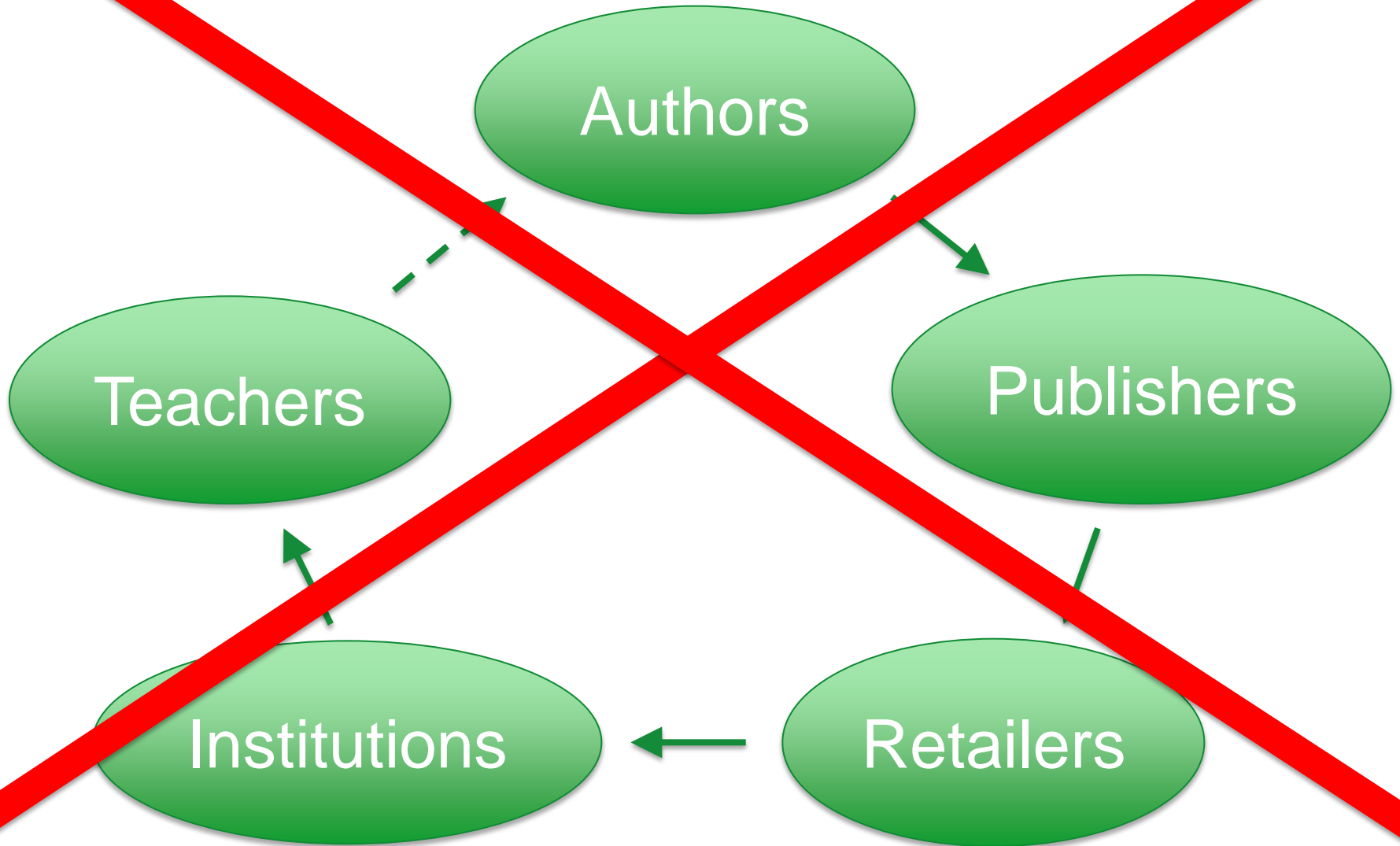
◇ 1980s

◇ 1990s

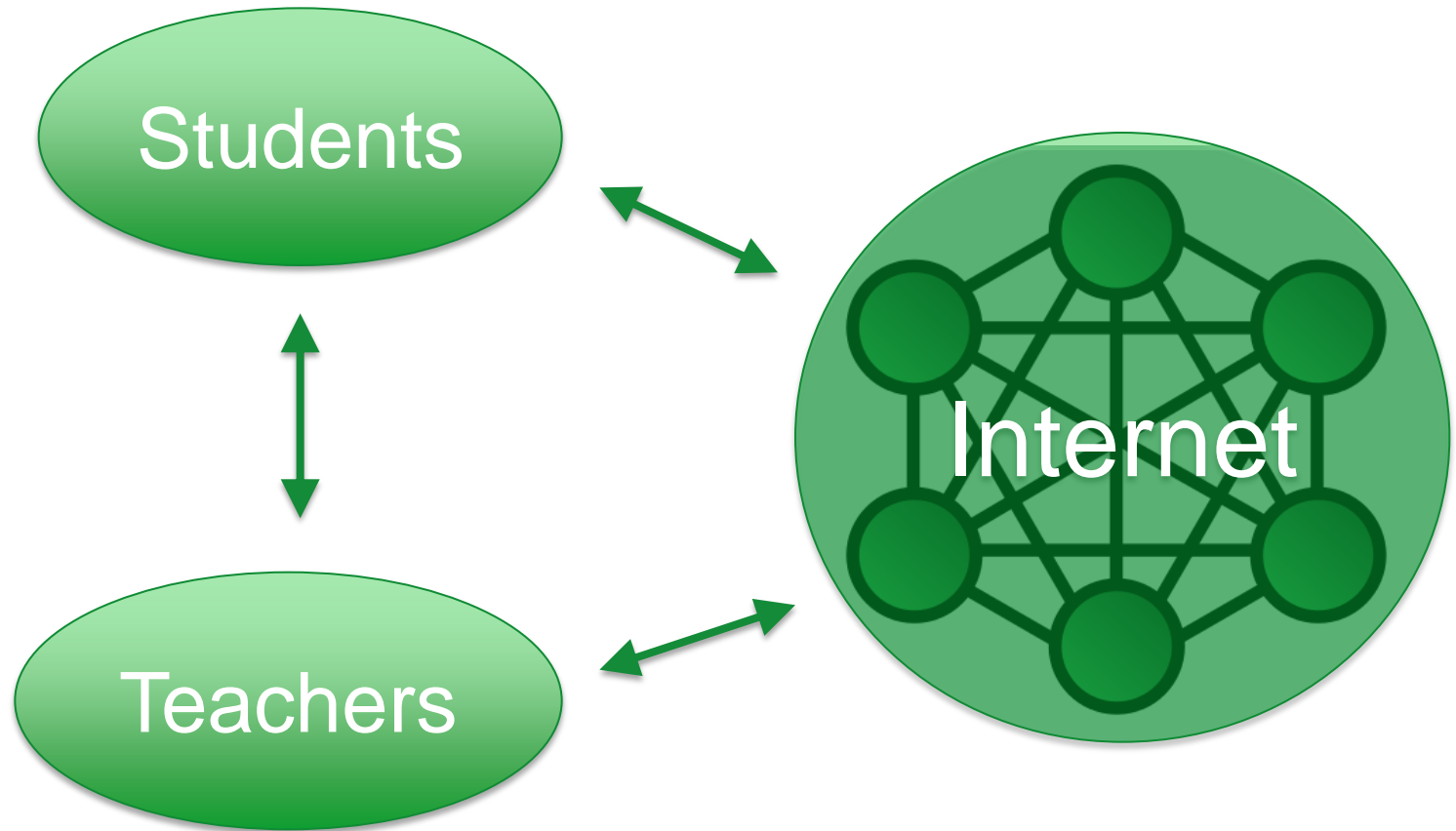
Three 'inventions' that changed everything

- ◇ 1970s The photocopier
- ◇ 1980s Digitisation of text,
images and sound
- ◇ 1990s The Internet

Twentieth century model



Twenty first century model





Blended Learning Essentials: Getting Started (aimed at the vocational education and training sector)

Sign up at FutureLearn.com

futurelearn.com/courses/blended-learning-getting-started



About the course

Built with open educational resources

Shows practical examples of how to use open tools + resources

With Creative Commons licences

Learning together with colleagues from across vocational education and skills

Sign up at FutureLearn.com

futurelearn.com/courses/blended-learning-getting-started



EVANS WOOLFE MEDIA



The
Education
& Training
Foundation

Loughborough
COLLEGE est. 1909

NIACE The National Voice
for Lifelong Learning

A^OC
Association of Colleges
East Midlands

B
Bradford College

BORDERS
COLLEGE

eip association of employment
and learning providers

Starts 2 November 2015

Sign up at FutureLearn.com

futurelearn.com/courses/blended-learning-getting-started



Use the hashtag #FLble1 to join and contribute to social media conversations about this course.



UNIVERSITY OF LEEDS



ASSOCIATION
FOR LEARNING
TECHNOLOGY



Association for Learning Technology



www.alt.ac.uk



@A_L_T



CC-BY This work is licensed under a [Creative Commons Attribution 4.0 Unported License](https://creativecommons.org/licenses/by/4.0/).

Registered charity number: 1063519