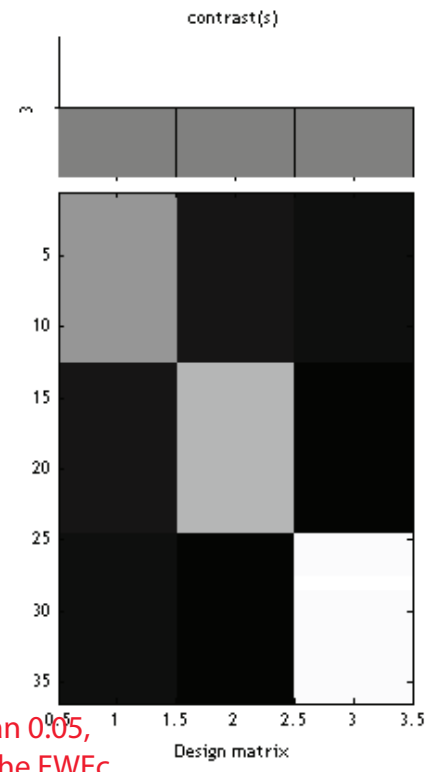
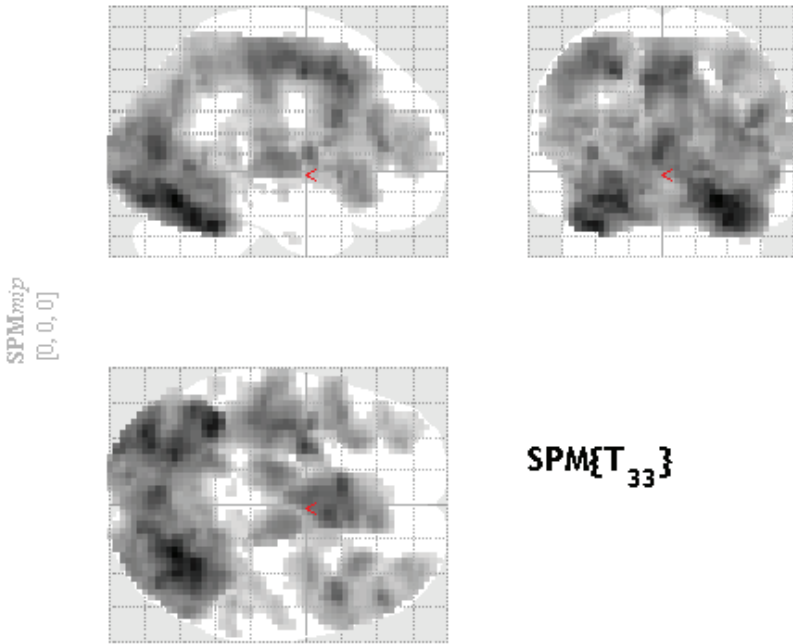


Positive effect of condition_1 (masked [incl.] by aal_MNI_V4.img)



SPMresults: ./face_rfx12/informed
 Height threshold T = 3.356337 {p<0.001 (unc.)}
 Extent threshold k = 5 voxels

PFWE-corr is 0.000, which is less than 0.05,
 but the cluster size is smaller than the FWEc
 extent at the bottom of the page.

Statistics: p-values adjusted for search volume

set-level		cluster-level				peak-level					mm mm mm		
p	c	p _{FWE-corr}	p _{FDR-corr}	k _c	p _{uncorr}	p _{FWE-corr}	p _{FDR-corr}	T	(Z _p)	p _{uncorr}			
0.043	7	0.000	0.043	15627	0.000	0.000	0.000	13.18	7.73	0.000	27	-69	-15
		0.239	0.639	33	0.032	0.000	0.000	12.02	7.40	0.000	33	-60	-24
		0.062	0.639	56	0.008	0.000	0.000	11.90	7.37	0.000	-36	-51	-27
						0.378	0.080	4.71	4.09	0.000	15	-24	42
						0.392	0.080	4.69	4.08	0.000	60	-15	18
						0.893	0.316	4.02	3.60	0.000	48	-21	15
						0.995	0.680	3.59	3.28	0.001	42	-24	21
		0.802	0.639	11	0.192	0.905	0.349	3.99	3.58	0.000	6	-21	30
		0.891	0.707	8	0.264	0.970	0.475	3.81	3.44	0.000	-3	-42	57
		0.833	0.639	10	0.213	0.989	0.593	3.68	3.34	0.000	9	-39	60
		0.958	0.707	5	0.377	0.992	0.629	3.64	3.32	0.000	42	-12	-33

table shows 3 local maxima more than 8.0mm apa

Height threshold: T = 3.36, p = 0.001 (1.000)
 Extent threshold: k = 5 voxels, p = 0.377 (0.958)
 Expected voxels per cluster, <k> = 6.908
 Expected number of clusters, <c> = 3.18
 FWEp: 5.641, FDRp: 5.100, FWEc: 17924, FDRc: 57

Degrees of freedom = [1.0, 33.0]
 FWHM = 12.3 12.5 12.8 mm mm mm; 4.1 4.2 4.3 {voxels}
 Volume: 1392120 = 51560 voxels = 628.8 resels
 Voxel size: 3.0 3.0 3.0 mm mm mm; (resel = 72.99 voxels)