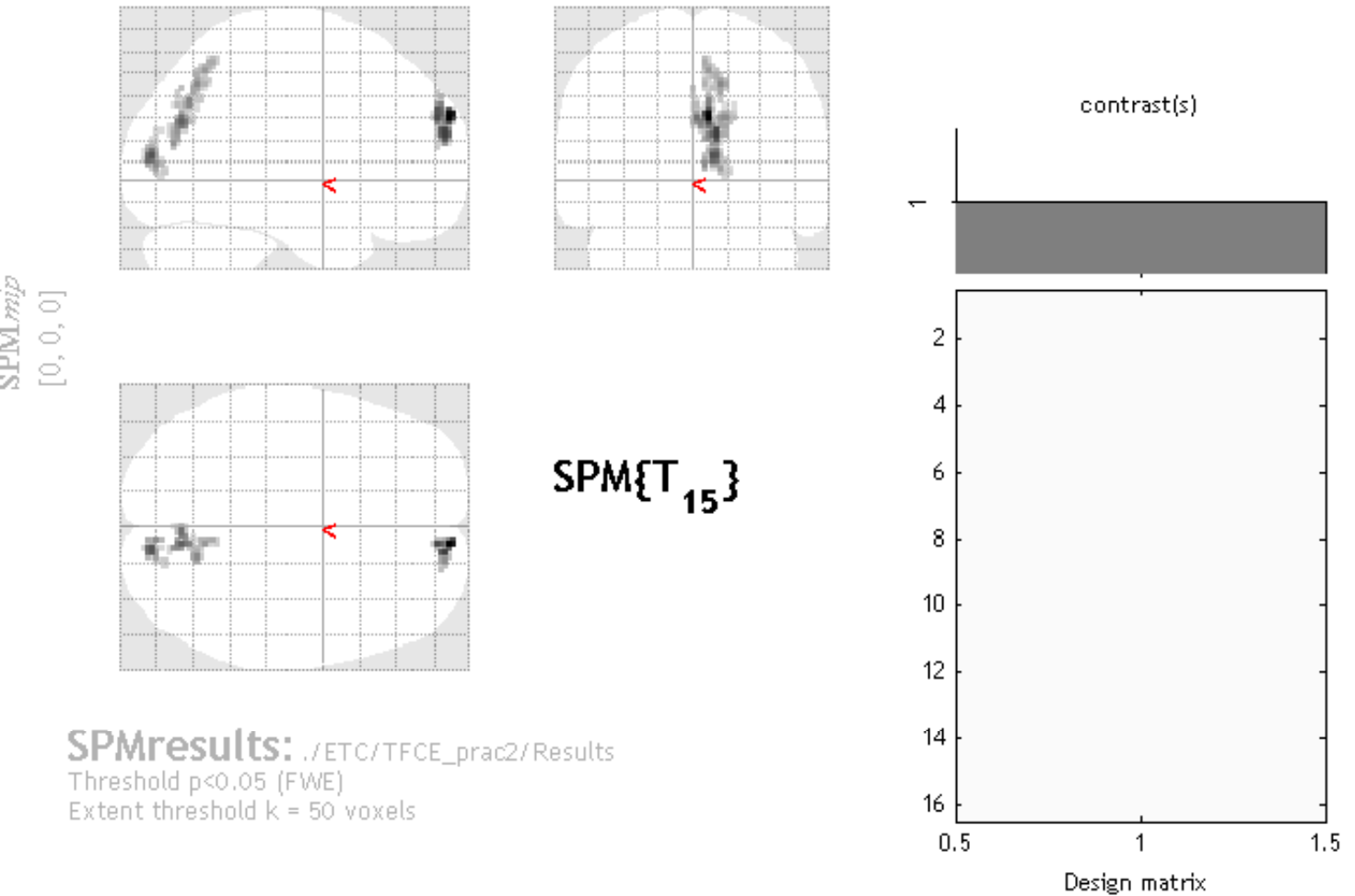


Nonparametric test: 5000 permutation



Statistics: nonparametric p-values adjusted for search volume

| cluster-level | peak-level | | | | mm mm mm | | | |
|---------------|--------------|-----------------------|-----------------------|--------------|---------------------|------------|-----------|--|
| | k_E | $p_{\text{FWE-corr}}$ | $q_{\text{FDR-corr}}$ | T | p_{uncorr} | | | |
| 120 | 0.000 | 0.000 | 6.01 | 0.000 | 8 | 62 | 30 | |
| | 0.001 | 0.011 | 5.40 | 0.001 | 12 | 60 | 22 | |
| 78 | 0.006 | 0.011 | 4.72 | 0.001 | 16 | 60 | 30 | |
| | 0.001 | 0.011 | 5.21 | 0.001 | 10 | -84 | 12 | |
| | 0.031 | 0.011 | 4.19 | 0.001 | 16 | -78 | 4 | |
| 88 | 0.039 | 0.011 | 4.07 | 0.001 | 10 | -82 | 24 | |
| | 0.001 | 0.011 | 5.09 | 0.001 | 8 | -70 | 28 | |
| | 0.003 | 0.011 | 4.79 | 0.001 | 8 | -66 | 38 | |
| 71 | 0.007 | 0.011 | 4.64 | 0.001 | 10 | -74 | 18 | |
| | 0.004 | 0.011 | 4.77 | 0.001 | 14 | -62 | 46 | |
| | 0.007 | 0.011 | 4.63 | 0.001 | 8 | -58 | 52 | |
| | 0.043 | 0.011 | 4.03 | 0.001 | 16 | -62 | 34 | |

table shows 3 local maxima more than 8.0mm apar

Degrees of freedom = [1.0, 15.0]
 FWHM = 6.9 7.3 10.8 mm mm mm; 3.4 3.6 5.4 {voxels}
 Volume: 2479016 = 309877 voxels = 4061.3 resels
 Voxel size: 2.0 2.0 2.0 mm mm mm; (resel = 67.96 voxels)
 Permutations = 5000