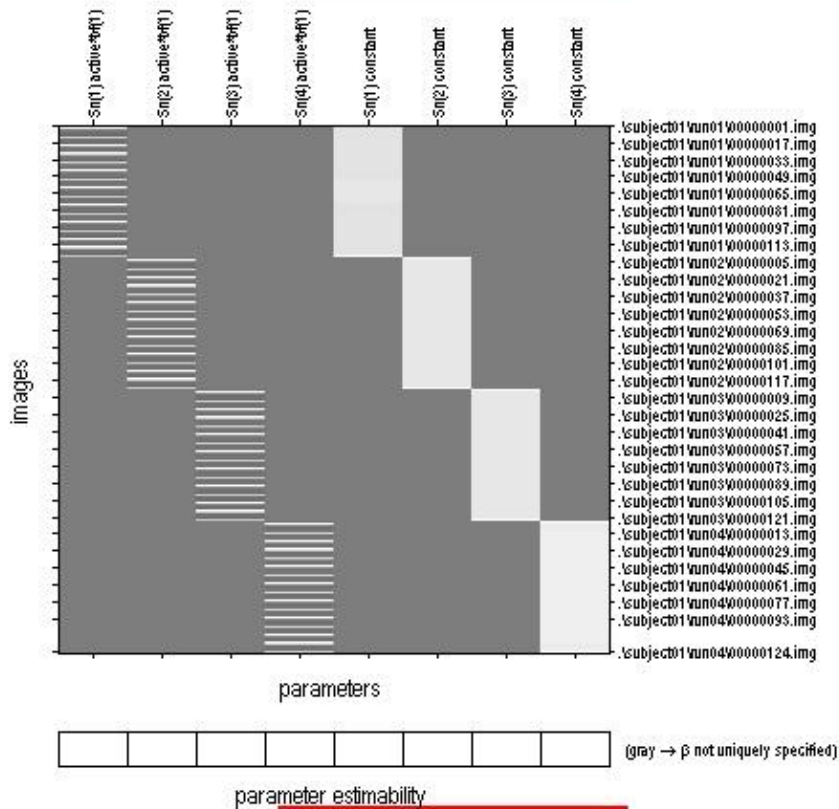
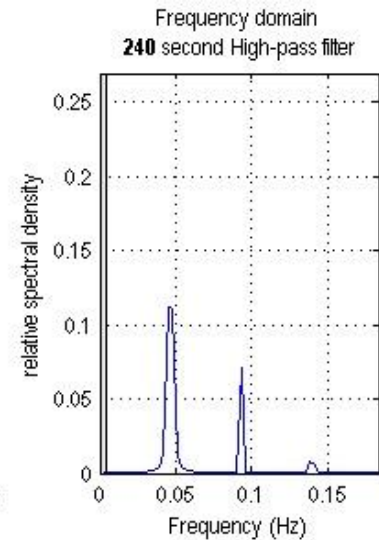
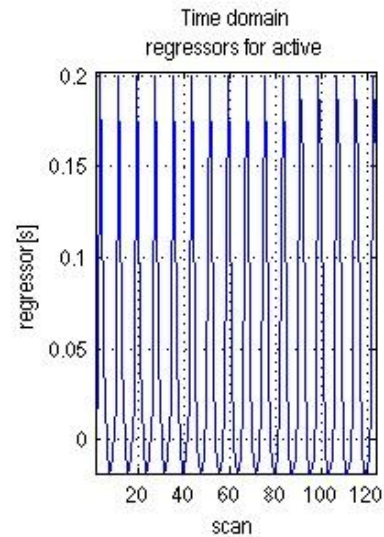


Statistical analysis: Design

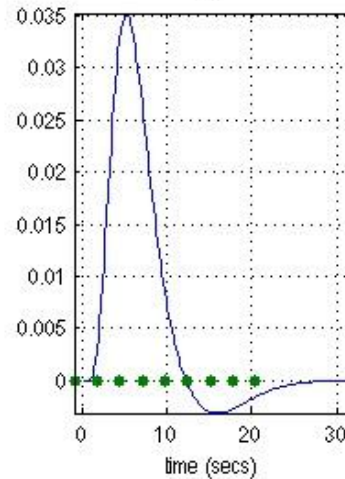


Design description...

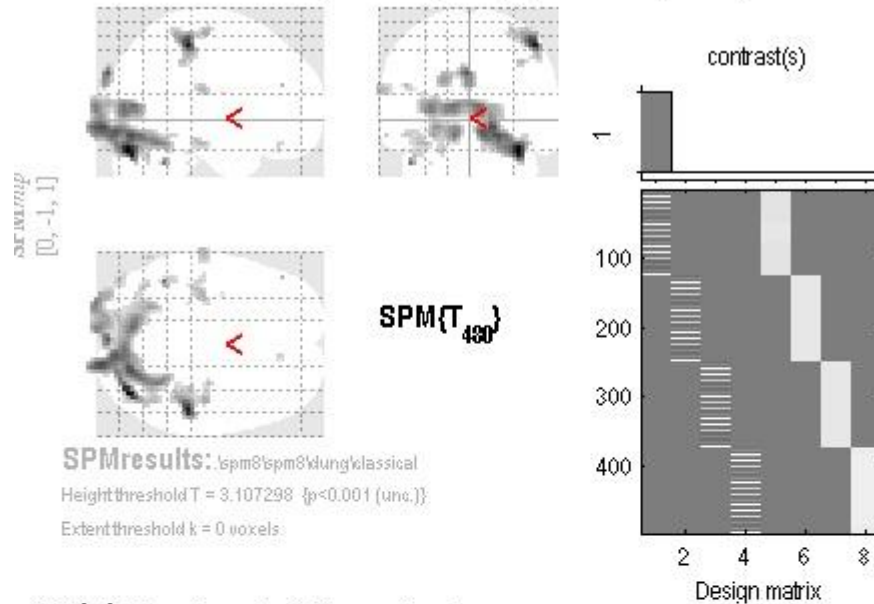
Basis functions : hrf
Number of sessions : 4
Trials per session : 1 1 1 1
Interscan interval : 2.68 [s]
High pass Filter : Cutoff: 240 [s]
Global calculation : mean voxel value
Grand mean scaling : session specific
Global normalisation : None



Basis set and peristimulus sampling hrf



active (masked [incl.] by active at p=0.05)



SPMresults: .spm8\spm8\klung\klassical
 Height threshold T = 3.107298 {p<0.001 (unc.)}
 Extent threshold k = 0 voxels

Statistics: p-values adjusted for search volume

set-level		cluster-level				peak-level					mm mm mm		
ρ	c	$\rho_{FUE-corr}$	$q_{FDR-corr}$	k_E	ρ_{uncorr}	$\rho_{FUE-corr}$	$q_{FDR-corr}$	T	(Z_{\pm})	ρ_{uncorr}			
0.000	L1	0.000	0.000	892	0.000	0.000	0.004	3.81	3.52	0.000	38	-18	-23
						0.028	0.003	4.68	4.63	0.000	23	-13	-33
						0.028	0.003	4.68	4.62	0.000	35	-21	-5
		0.032	0.055	161	0.010	0.002	0.011	3.23	3.18	0.000	48	-31	55
						0.419	0.428	3.13	3.08	0.000	42	-39	84
						0.648	0.555	3.55	3.53	0.000	39	-34	43
		0.211	0.235	19	0.089	0.036	0.016	4.32	4.47	0.000	-3	-91	34
						0.318	0.354	3.83	3.78	0.000	-23	-24	28
		0.088	0.081	139	0.020	0.088	0.126	4.28	4.24	0.000	-12	-13	-11
						0.436	0.366	3.11	3.14	0.000	-21	-58	-33
						0.842	0.729	3.35	3.33	0.000	-39	-61	-33
		0.853	0.810	8	0.580	0.101	0.131	4.23	4.19	0.000	-45	-49	-32
		0.011	0.021	230	0.003	0.134	0.136	4.18	4.12	0.000	-30	-100	1
						0.368	0.383	4.89	4.85	0.000	-12	-388	-8
						0.281	0.211	3.93	3.88	0.000	-21	-388	-5
		0.593	0.631	28	0.282	0.611	0.541	3.58	3.56	0.000	-88	-19	22
		0.582	0.631	29	0.234	0.626	0.541	3.51	3.55	0.000	-38	-22	-11
						0.935	0.838	3.28	3.38	0.003	-42	-28	-23

table shows 3 local maxima more than 8.0mm apart

Height threshold: T = 3.11, p = 0.001 (0.968)

Degrees of freedom = [1.0, 480.0]

Extent threshold: k = 0 voxels, p = 1.000 (0.968)

FWHM = 19.2 19.5 14.9 mm mm mm; 6.4 6.5 5.0 (voxels)