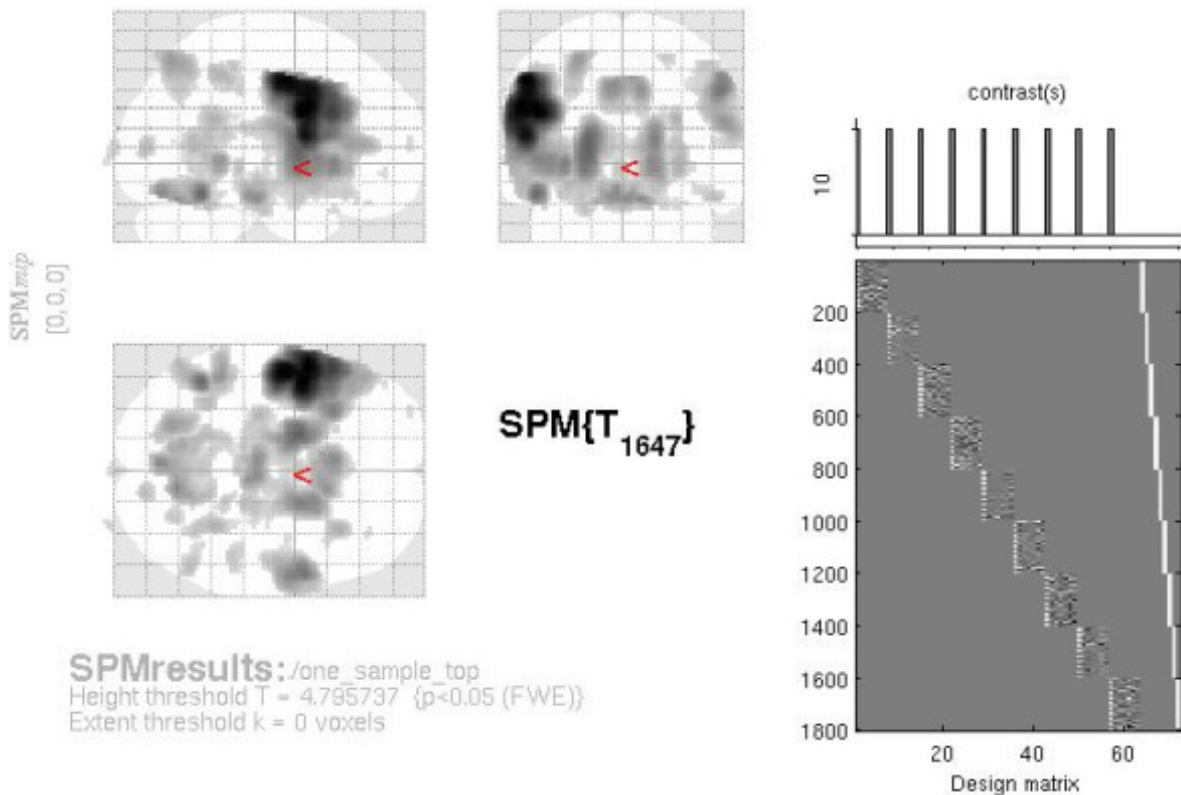


Version 1: First level analysis (activation condition modelled only), results at $p < .05$ FWE corrected

active - All Sessions



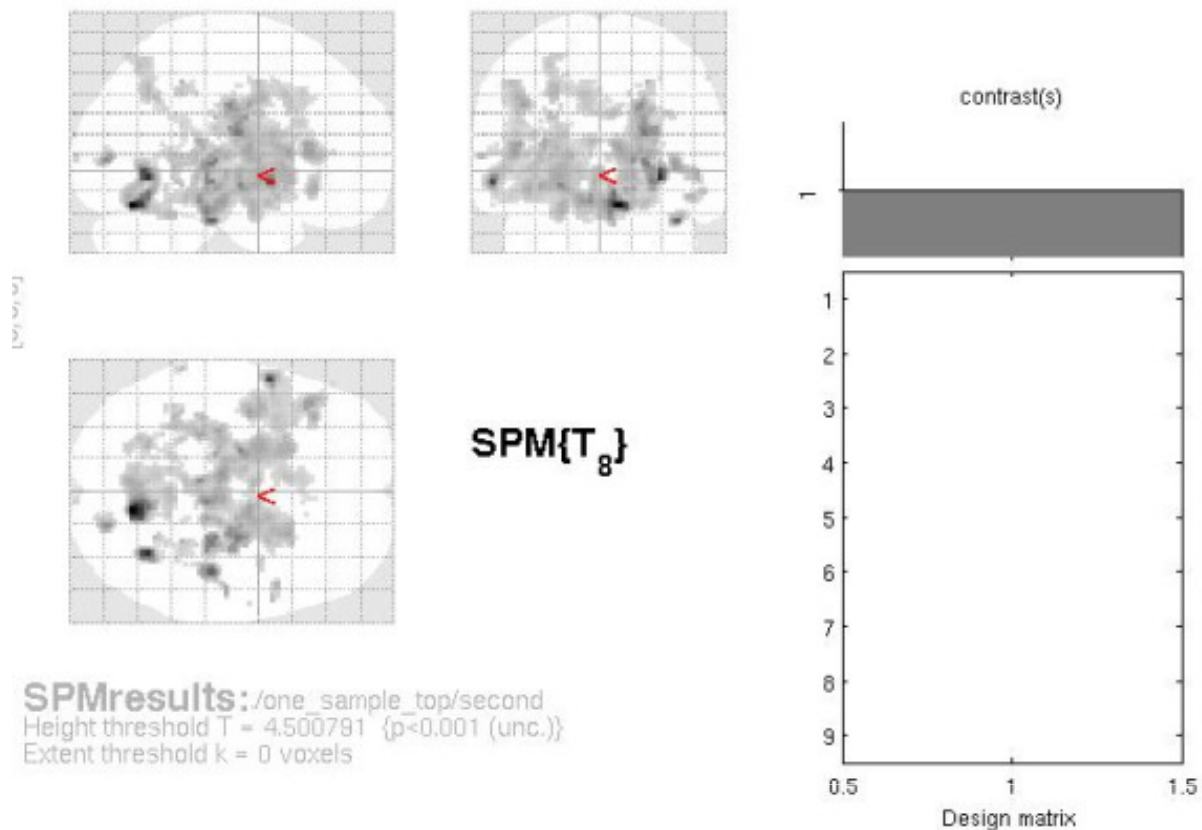
Statistics: p -values adjusted for search volume

set-level		cluster-level			voxel-level					mm mm mm					
p	c	$p_{corrected}$	k_E	$p_{uncorrected}$	$p_{FWE-corr}$	$p_{FDR-corr}$	T	(Z_{max})	$p_{uncorrected}$						
0.000	23	0.000	12433	0.000	0.000	0.000	15.94	Inf	0.000	-46	4	28			
					0.000	0.000	15.70	Inf	0.000	-52	-6	44			
					0.000	0.000	15.61	Inf	0.000	-56	8	30			
					0.000	0.000	10.32	Inf	0.000	-46	-50	-14			
					0.000	0.000	8.30	Inf	0.000	-48	-42	0			
					0.000	0.000	6.60	6.56	0.000	-36	-48	4			
					0.000	1450	0.000	0.000	0.000	9.77	Inf	0.000	54	4	40
					0.000	0.000	8.20	Inf	0.000	56	-4	22			
					0.000	0.000	6.42	6.38	0.000	62	8	16			
					0.000	826	0.000	0.000	0.000	8.76	Inf	0.000	-4	22	42
					0.000	0.000	8.32	Inf	0.000	10	18	40			
					0.000	0.000	7.91	7.81	0.000	6	14	46			
					0.000	547	0.000	0.000	0.000	8.06	Inf	0.000	-24	-66	54
					0.000	0.000	6.03	5.99	0.000	-26	-60	42			
					0.000	0.022	0.000	4.98	4.96	0.000	-30	-62	32		
0.000	320	0.000	0.000	0.000	7.00	6.95	0.000	30	-44	24					
0.000	0.000	0.000	6.30	6.26	0.000	30	-50	10							
0.000	0.001	0.000	5.57	5.54	0.000	34	-56	-2							
0.000	198	0.000	0.000	0.000	6.86	6.81	0.000	-46	-40	48					
0.000	67	0.000	0.000	0.000	6.50	6.45	0.000	12	-82	8					
0.000	85	0.000	0.000	0.000	6.38	6.34	0.000	52	-58	-18					

table shows 3 local maxima more than 8.0mm apart

Height threshold: $T = 4.80$, $p = 0.000$ (0.050) ($p < 0.05$ (FWE)) Degrees of freedom = [1.0, 1647.0]
 Extent threshold: $k = 0$ voxels, $p = 1.000$ (0.050) FWHM = 8.8 8.9 9.4 mm mm mm; 4.4 4.5 4.7 (voxels);
 Expected voxels per cluster, $\langle k \rangle = 2.872$ Volume: 1287560 = 160945 voxels = 1617.5 resels
 Expected number of clusters, $\langle c \rangle = 0.05$ Voxel size: 2.0 2.0 2.0 mm mm mm; (resel = 92.37 voxels)
 Expected false discovery rate, ≤ 0.00 Page 1

Version 1: Subsequent second level analysis (one sample t-test), results at $p < .001$ uncorrected



Statistics: *p-values adjusted for search volume*

et-level		cluster-level			voxel-level					mm mm mm		
<i>p</i>	<i>c</i>	<i>p</i> _{corrected}	<i>k_E</i>	<i>p</i> _{uncorrected}	<i>p</i> _{FWE-corr}	<i>p</i> _{FDR-corr}	<i>T</i>	(<i>Z_{max}</i>)	<i>p</i> _{uncorrected}			
0.017	50	0.000	5420	0.000	0.010	0.009	17.40	5.23	0.000	10 -66 -16		
					0.081	0.010	13.24	4.89	0.000	-56 6 -4		
					0.505	0.021	10.41	4.52	0.000	8 -58 -12		
					0.022	0.009	14.00	4.97	0.000	32 -58 -2		
					1.000	0.023	4.86	3.22	0.001	30 -54 6		
					0.186	0.006	0.271	0.017	11.31	4.65	0.000	42 -24 -24
					0.160	0.005	0.930	0.022	8.90	4.26	0.000	18 -80 6
					0.020	0.001	0.976	0.022	8.24	4.14	0.000	40 -28 4
							0.998	0.022	7.36	3.95	0.000	50 -16 0
					0.000	0.000	0.991	0.022	7.78	4.04	0.000	-40 -4 34
							1.000	0.022	6.33	3.69	0.000	-46 0 46
							1.000	0.024	4.63	3.14	0.001	-34 8 34
					0.089	0.003	0.997	0.022	7.37	3.95	0.000	-36 30 -8
					0.001	0.000	1.000	0.022	6.94	3.85	0.000	-22 -58 42
							1.000	0.022	6.15	3.64	0.000	-26 -62 54
							1.000	0.022	5.75	3.52	0.000	-22 -68 60
0.852	18	0.053	1.000	0.022	6.71	3.79	0.000	50 10 -12				
0.966	13	0.094	1.000	0.022	6.56	3.75	0.000	26 -40 46				
0.149	45	0.004	1.000	0.022	6.43	3.72	0.000	-24 -22 28				
0.908	16	0.066	1.000	0.022	6.40	3.71	0.000	24 -54 38				
			1.000	0.022	5.18	3.34	0.000	28 -48 32				

table shows 3 local maxima more than 8.0mm apart

Height threshold: T = 4.50, p = 0.001 (1.000) {p<0.001 (unc.)} Degrees of freedom = [1.0, 8.0]
 Extent threshold: k = 0 voxels, p = 1.000 (1.000) FWHM = 9.1 9.6 10.3 mm mm mm; 4.5 4.8 5.2 {voxels};
 Expected voxels per cluster, <k> = 4.747 Volume: 1287560 = 160945 voxels = 1332.6 resels
 Expected number of clusters, <c> = 36.18 Voxel size: 2.0 2.0 2.0 mm mm mm; (resel = 112.11 voxels)
 Expected false discovery rate, <f> = 0.02 Page 1