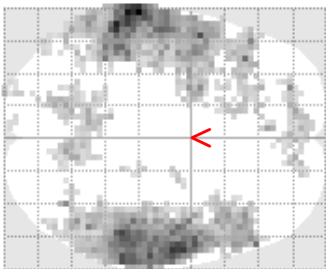
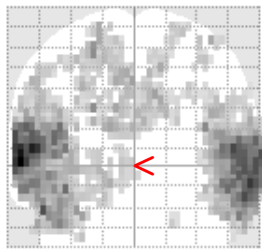
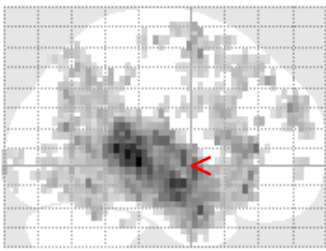
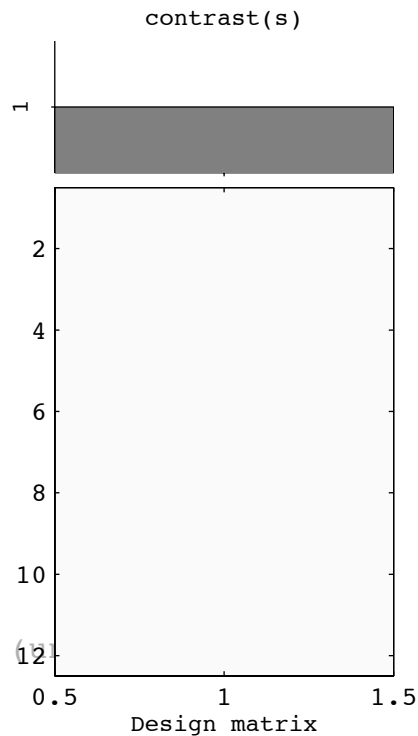


# font\_test

SPMmp  
[0, 0, 0]



SPM{T<sub>11</sub>}



SPMresults:   
Height threshold T = 4.024701   
Extent threshold k = 5 voxels   
fp < 0.001

## Statistics: p-values adjusted for search volume

set-level		cluster-level			peak-level					mm	mm	mm	
p	c	p <sub>FWE-corr</sub>	q <sub>FDR-corr</sub>	k <sub>E</sub>	p <sub>uncorr</sub>	p <sub>FWE-corr</sub>	q <sub>FDR-corr</sub>	T	(Z)	p <sub>uncorr</sub>			
0.018	0.004	12	0.000	1.000	0.361	6.36	4.04	0.000	-21	-102	-4		
1.000	0.593	5.29	3.65	0.000	-21	-93	4						
0.028	0.006	11	0.000	1.000	0.401	6.11	3.96	0.000	-18	-69	56		
1.000	0.660	5.03	3.55	0.000	-9	-63	60						
0.001	0.000	20	0.000	1.000	0.423	5.99	3.92	0.000	42	3	32		
1.000	0.649	5.07	3.57	0.000	51	-6	28						
1.000	0.744	4.74	3.43	0.000	42	-6	28						
0.124	0.019	8	0.002	1.000	0.465	5.84	3.86	0.000	24	-9	66		
0.334	0.049	6	0.005	1.000	0.470	5.82	3.85	0.000	-39	-60	-21		
0.075	0.013	9	0.001	1.000	0.476	5.77	3.84	0.000	-12	18	63		
1.000	0.660	5.03	3.55	0.000	-18	12	56						
0.018	0.004	12	0.000	1.000	0.487	5.72	3.82	0.000	36	12	52		
1.000	0.491	5.71	3.81	0.000	33	12	63						
0.007	0.002	14	0.000	1.000	0.487	5.72	3.82	0.000	-18	-54	-18		
1.000	0.770	4.66	3.39	0.000	-24	-48	-7						
0.075	0.013	9	0.001	1.000	0.514	5.60	3.78	0.000	-18	-66	-18		
1.000	0.568	5.39	3.70	0.000	-27	-63	-18						
1.000	0.810	4.55	3.34	0.000	-24	-72	-18						
0.124	0.019	8	0.002	1.000	0.515	5.59	3.77	0.000	-9	-48	0		
0.526	0.070	5	0.009	1.000	0.537	5.48	3.73	0.000	39	-18	24		
1.000	0.689	4.91	3.50	0.000	42	-15	32						
0.124	0.019	8	0.002	1.000	0.554	5.42	3.71	0.000	-3	-57	18		
0.075	0.013	9	0.001	1.000	0.568	5.37	3.69	0.000	-3	60	0		
1.000	0.774	4.63	3.38	0.000	-3	54	-7						
0.005	0.002	15	0.000	1.000	0.568	5.37	3.69	0.000	-48	3	46		
1.000	0.864	4.41	3.28	0.001	-51	-6	49						
1.000	0.875	4.38	3.26	0.001	-54	-3	38						
0.334	0.049	6	0.005	1.000	0.587	5.32	3.67	0.000	18	-27	63		
0.526	0.070	5	0.009	1.000	0.593	5.29	3.65	0.000	18	-39	-32		
0.124	0.019	8	0.002	1.000	0.595	5.27	3.65	0.000	27	-66	38		
0.046	0.009	10	0.001	1.000	0.596	5.27	3.65	0.000	-48	-81	0		
1.000	0.719	4.83	3.47	0.000	-42	-81	7						
0.526	0.070	5	0.009	1.000	0.607	5.23	3.63	0.000	-9	-72	-4		
0.526	0.070	5	0.009	1.000	0.689	4.91	3.50	0.000	-24	18	49		

table shows 3 local maxima more than 8.0mm apart

Height threshold: T = 4.02, p = 0.0049, degrees of freedom = [1.0, 11.0]  
 Extent threshold: k = 5 voxels, p = FWEp = 0.09, FDRp = 0.09, 5.26, 7.6 mm mm mm; 2.3 2.3 2.2  
 Expected voxels per cluster, <k> = 5, FWEp = 1.695362 = 53821 voxels = 4205.7 r  
 Expected number of clusters, <c> = 3, voxel size: 3.0 3.0 3.5 mm mm mm; (resel  
 FWEp: 9.111, FDRp: 15.249, FWEc: 10, FDRc: 6