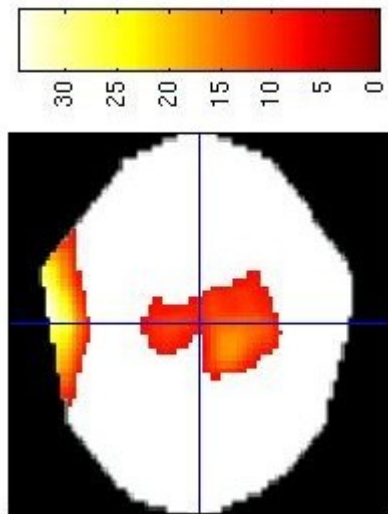
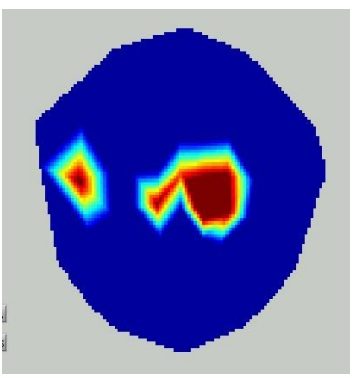


Raw scalp difference between two experimental conditions plotted at 900ms post-stimulus, showing a left fronto-temporal and central maximum.



A thresholded spm F test of the difference between the two conditions, plotted at 900ms post-stimulus and overlaid on the mask.img in the spm8 results window shows a similar topography to the raw difference wave.



Having saved the thresholded spm result above as an image, then loaded and plotted this at 900ms post-stimulus using `spm_eeg_img2maps` the peak F values have a very different distribution, where the large left fronto-temporal cluster is almost wiped out.