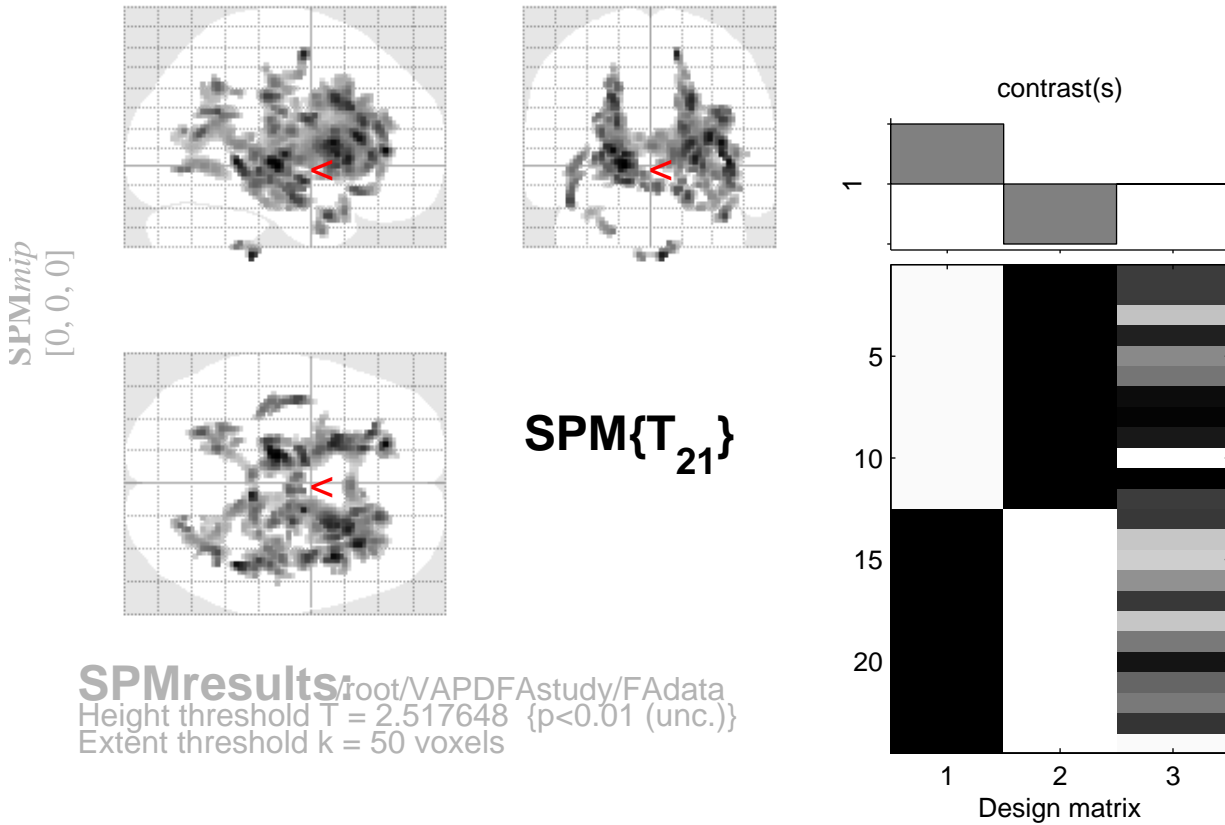


norm>vapd



SPMresults: root/VAPDFAstudy/FAdata
 Height threshold T = 2.517648 {p<0.01 (unc.)}
 Extent threshold k = 50 voxels

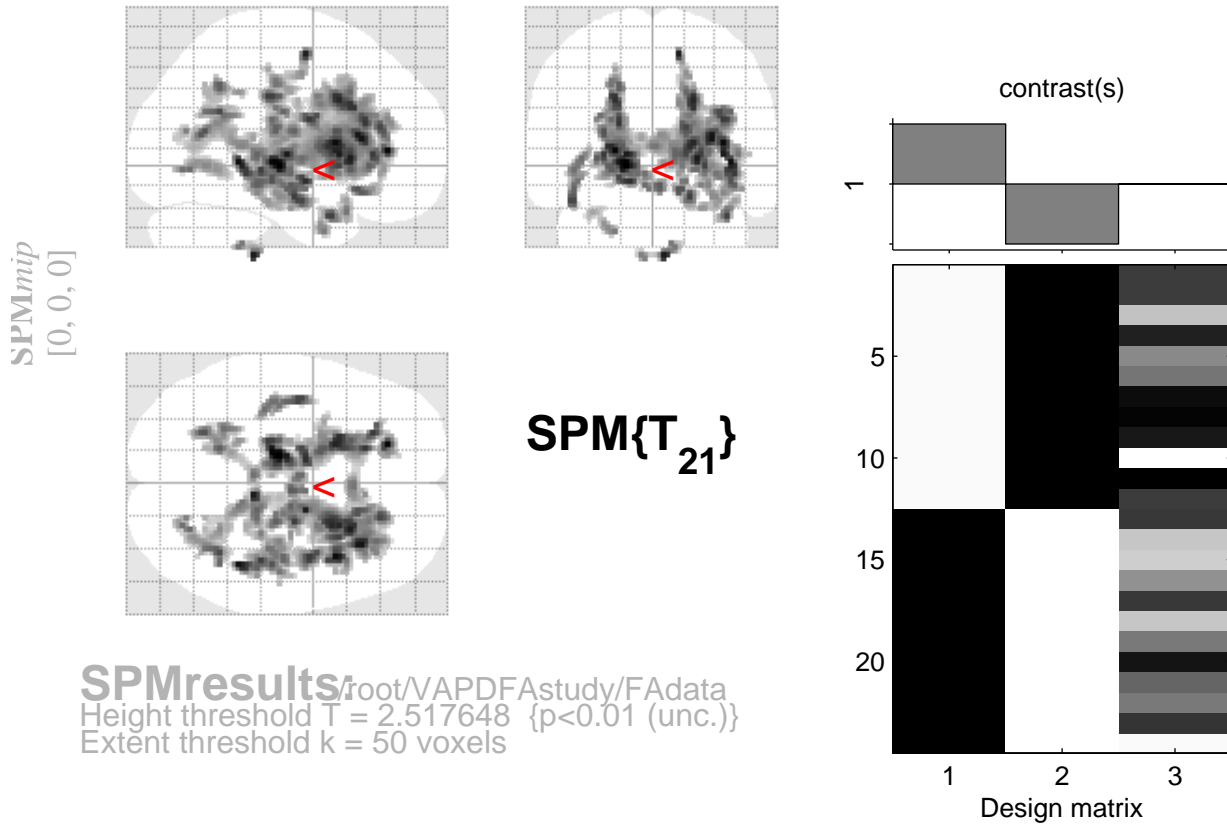
Statistics: p-values adjusted for search volume

set-level		cluster-level			peak-level					mm mm mm			
ρ	c	$\rho_{FWE-corr}$	$\alpha_{FDR-corr}$	k_E	ρ_{uncorr}	$\rho_{FWE-corr}$	$\alpha_{FDR-corr}$	T	(Z_{\equiv})	ρ_{uncorr}			
0.561	11	0.000	0.000	5015	0.000	1.000	1.000	3.95	3.38	0.000	-14	-18	0
						1.000	1.000	3.88	3.33	0.000	-20	40	8
						1.000	1.000	3.83	3.30	0.000	38	12	12
		0.000	0.000	563	0.000	1.000	1.000	3.82	3.29	0.000	42	-40	2
						1.000	1.000	3.51	3.08	0.001	20	-10	-16
						1.000	1.000	3.51	3.08	0.001	40	-28	-2
		0.999	0.658	63	0.048	1.000	1.000	3.73	3.23	0.001	6	-32	-46
						1.000	1.000	3.16	2.83	0.002	12	-40	-42
						1.000	1.000	3.10	2.78	0.003	-6	-32	-46
		0.997	0.605	69	0.040	1.000	1.000	3.71	3.22	0.001	14	-4	58
						1.000	1.000	3.02	2.72	0.003	18	-6	48
						1.000	1.000	2.75	2.51	0.006	20	-18	38
		0.658	0.195	131	0.007	1.000	1.000	3.52	3.09	0.001	-22	-24	36
						1.000	1.000	2.88	2.61	0.005	-20	-24	50
		0.973	0.467	86	0.024	1.000	1.000	3.48	3.05	0.001	40	10	-26
						1.000	1.000	3.17	2.83	0.002	40	18	-24
		0.603	0.195	137	0.006	1.000	1.000	3.46	3.05	0.001	-42	-8	-18
						1.000	1.000	3.28	2.91	0.002	-42	-14	-12
						1.000	1.000	3.21	2.86	0.002	-38	-26	4
		0.973	0.467	86	0.024	1.000	1.000	3.44	3.03	0.001	36	-50	28
						1.000	1.000	2.85	2.59	0.005	36	-60	26
						1.000	1.000	2.80	2.55	0.005	18	-58	42

table shows 3 local maxima more than 8.0mm apart

Height threshold: T = 2.52, p = 0.010 (1.000) Degrees of freedom = [1.0, 21.0]
 Extent threshold: k = 50 voxels, p = 0.074 (1.000) FWHM = 7.8 8.5 8.0 mm mm mm; 3.9 4.3 4.0 {voxels}
 Expected voxels per cluster, <k> = 15.832 Volume: 1631104 = 203888 voxels = 2789.0 resels
 Expected number of clusters, <c> = 11.17 Voxel size: 2.0 2.0 2.0 mm mm mm; (resel = 66.70 voxels)
 FWEp: 7.135, FDRp: Inf, FWEc: 563, FDRc: 220 Page 1

norm>vapd



SPMresults: root/VAPDFAstudy/FAdata
Height threshold T = 2.517648 {p<0.01 (unc.)}
Extent threshold k = 50 voxels

Statistics: p-values adjusted for search volume

set-level		cluster-level			peak-level					mm mm mm			
ρ	c	$\rho_{FWE-corr}$	$q_{FDR-corr}$	k_E	ρ_{uncorr}	$\rho_{FWE-corr}$	$q_{FDR-corr}$	T	(Z_{\equiv})	ρ_{uncorr}			
0.130		0.042		220	0.001	1.000	1.000	3.39	2.99	0.001	-26	-58	18
						1.000	1.000	3.20	2.85	0.002	-28	-48	26
						1.000	1.000	3.06	2.75	0.003	-22	-52	22
0.995		0.601		73	0.035	1.000	1.000	3.31	2.93	0.002	-18	-50	40
						1.000	1.000	2.99	2.70	0.003	-22	-40	38
						1.000	1.000	2.81	2.56	0.005	-18	-58	38
1.000		0.778		55	0.062	1.000	1.000	3.12	2.80	0.003	-20	6	-34
						1.000	1.000	2.87	2.61	0.005	-32	6	-24

table shows 3 local maxima more than 8.0mm apart

Height threshold: T = 2.52, p = 0.010 (1.000) Degrees of freedom = [1.0, 21.0]
 Extent threshold: k = 50 voxels, p = 0.074 (1.000) FWHM = 7.8 8.5 8.0 mm mm mm; 3.9 4.3 4.0 {voxels}
 Expected voxels per cluster, <k> = 15.832 Volume: 1631104 = 203888 voxels = 2789.0 resels
 Expected number of clusters, <c> = 11.17 Voxel size: 2.0 2.0 2.0 mm mm mm; (resel = 66.70 voxels)
 FWEp: 7.135, FDRp: Inf, FWEc: 563, FDRc: 220 Page 2/2