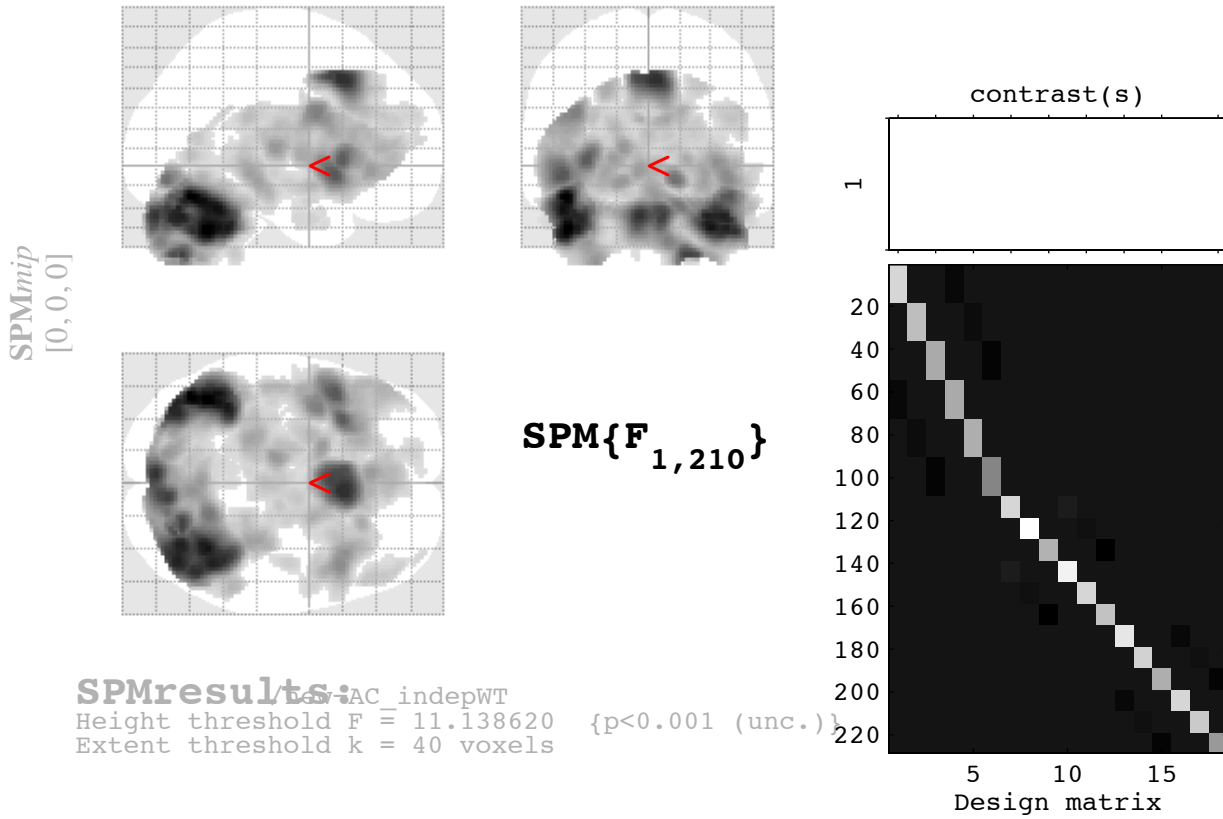


Average effect of condition



Statistics: p-values adjusted for search volume

set-level		cluster-level			peak-level			mm mm mm					
p	c	p _{FWE-corr}	q _{FDR-corr}	k _E	p _{uncorr}	p _{FWE-corr}	q _{FDR-corr}	F	(Z)	p _{uncorr}			
15				31013	0.000	0.000	0.000	189.83	Inf	0.000	-44	-54	-34
					0.000	0.000	0.000	184.77	Inf	0.000	-44	-64	-16
					0.000	0.000	0.000	172.17	Inf	0.000	-46	-50	-22
				494	0.000	0.000	0.000	96.25	Inf	0.000	14	-76	-8
					0.000	0.000	0.000	35.19	5.58	0.000	26	-54	-8
				429	0.000	0.000	0.000	67.13	7.53	0.000	-14	-78	-8
					0.943	0.446	0.000	13.53	3.43	0.000	-30	-48	-10
				1081	0.000	0.000	0.000	64.11	7.38	0.000	-4	32	-2
					0.000	0.000	0.000	51.58	6.68	0.000	4	32	0
					0.000	0.000	0.000	44.23	6.22	0.000	-2	44	-2
				391	0.000	0.000	0.000	50.22	6.60	0.000	-22	28	40
					0.464	0.111	0.000	17.32	3.91	0.000	-24	8	40
				210	0.002	0.001	0.000	31.83	5.31	0.000	28	28	42
					0.005	0.001	0.000	29.30	5.10	0.000	24	18	44
				293	0.003	0.001	0.000	30.90	5.24	0.000	48	36	28
					0.009	0.002	0.000	27.62	4.95	0.000	46	46	24
					0.252	0.056	0.000	19.20	4.12	0.000	38	60	14
				109	0.004	0.001	0.000	30.02	5.16	0.000	10	-60	16
				138	0.005	0.001	0.000	29.14	5.09	0.000	-14	-58	14
					0.285	0.063	0.000	18.84	4.08	0.000	-8	-50	24
					0.872	0.332	0.000	14.36	3.54	0.000	-10	-42	30
				108	0.016	0.004	0.000	26.35	4.84	0.000	42	-10	-10
				75	0.035	0.008	0.000	24.34	4.65	0.000	-44	-20	-4
				61	0.103	0.024	0.000	21.62	4.38	0.000	52	2	-28
				187	0.115	0.026	0.000	21.32	4.35	0.000	-16	56	26
					0.276	0.061	0.000	18.93	4.09	0.000	-14	46	26
					0.994	0.728	0.001	12.08	3.23	0.001	-12	58	18
				160	0.221	0.049	0.000	19.57	4.16	0.000	-54	-4	-28
					0.622	0.168	0.000	16.22	3.78	0.000	-38	6	-24
					0.783	0.255	0.000	15.10	3.64	0.000	-44	8	-32
				49	0.575	0.150	0.000	16.54	3.82	0.000	-6	-42	-38

table shows 3 local maxima more than 8.0mm apart

Height threshold: F = 11.14, p = 0.001 (0.999 degrees of freedom = [1.0, 210.0])
 Extent threshold: k = 40 voxels, p = () FWHM = 11.6 11.0 11.3 mm mm mm; 5.8 5.5 5.7 {voxel
 Expected voxels per cluster, <k> = 16.831 Volume: 824816 = 103102 voxels = 514.8 resels
 Expected number of clusters, <c> = Voxel size: 2.0 2.0 2.0 mm mm mm; (resel = 179.18
 FWEp: 23.454, FDRp: 19.568