

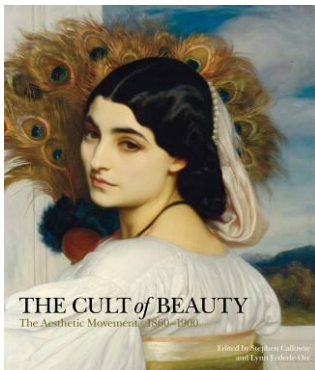
# ARLIS Annual General Meeting 2011

Wednesday 13<sup>th</sup> April  
Victoria & Albert Museum, London

## Guest Lecture: **Esmé Whittaker on *The Cult of Beauty***

Dr Esmé Whittaker is the Assistant Curator for the major exhibition, *The Cult of Beauty: The Aesthetic Movement 1860-1900* which will be held at the V&A from the 2 April to 17 July 2011. She began working at the V&A in 2008 as the Assistant Curator for the National Art Library.

She specialises in the history of late nineteenth-century design and architecture and has recently completed a Ph.D at the Courtauld Institute of Art, London, with a thesis on *The Arts and Crafts House in the Lake District: Buildings, Landscapes, Communities*. This followed an M.A. at the same institution studying the Aesthetic Movement and in particular the designs of the architect George Aitchison.



Her publications include the chapter 'Self-Conscious Regionalism: Dan Gibson and the Arts and Crafts House in the Lake District' in *Built from Below: British Architecture and the Vernacular* edited by Peter Guillery (Routledge, 2010) and the focus piece *Leighton and Aitchison* in the forthcoming book *The Cult of Beauty: The Aesthetic Movement 1860-1900* edited by Stephen Calloway and Lynn Federle Orr (V&A Publishing, 2011). She is also the author of *V&A Pattern: Walter Crane* (V&A Publishing) which will be published to coincide with *The Cult of Beauty* exhibition.