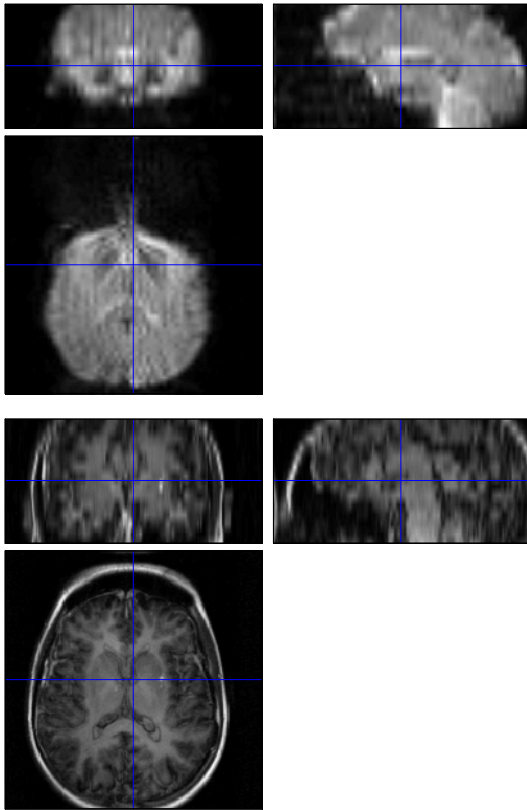


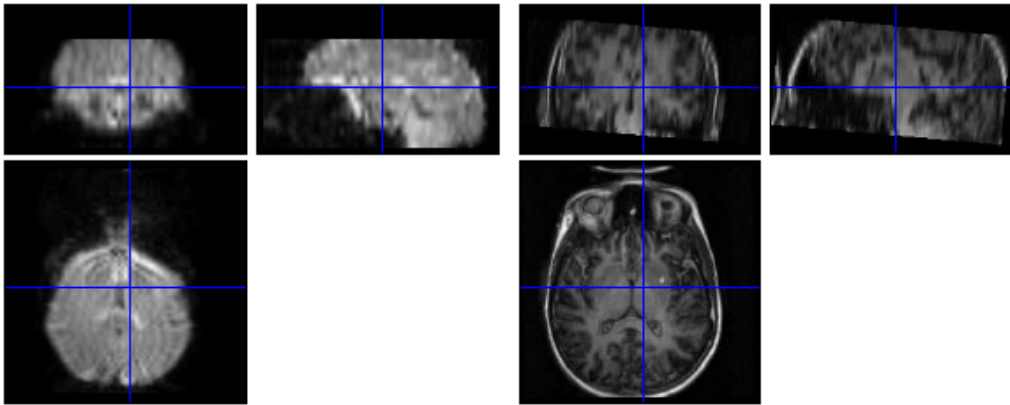
Before Preprocessing:

Result of check registration: functional (EPI images 64 voxels x 64 voxels x 14 slices, 3mm x 3mm x 7mm) and structural (T1 image 512 voxels x 512 voxels x 14 slices, 0.38mm x 0.38mm x 7mm) image



After Realignment and Coregistration step:

Coregistration result between the mean functional and structural image



After Segmentation and Normalisation:

Result of check registration: w*.* functional (EPI) and w*.* structural (T1) image

