

MIDAS HERITAGE
HER COMPLIANCE PROFILE



*Detail of carving, York Minster
© Paul Adams 10/09/2007*

MIDAS Heritage HER Compliance Profile

Introduction

MIDAS Heritage helps you decide what information to record

MIDAS Heritage is a data standard for information about the historic environment. It states what information should be recorded to support effective sharing and long-term preservation of the knowledge of the historic environment. It has been designed to be flexible and adaptable to a wide variety of different situations. Users therefore have a choice as to which parts of the standard they comply with, depending on the sort of information they are interested in.

Complying with MIDAS Heritage gives you many benefits

Compliance with MIDAS Heritage confers the following advantages:

- ◆ Improved access to information
- ◆ Ability to build on existing research
- ◆ The cost of sharing information is lowered
- ◆ New technologies, sharing the same standards, can be easily used
- ◆ Data is more easily archived

HER Compliance Profile – an agreed way for HERs to use MIDAS Heritage

A Compliance Profile is a way for a community of users to agree which parts of the standard they wish to comply with, and how they will use it. It is a document which must be used in conjunction with MIDAS Heritage, rather than as a stand-alone tool.

A collaborative approach created the Compliance Profile for HERs

The Historic Environment Record community is one of the largest groups of MIDAS Heritage users. It recognised that producing a Compliance Profile would be a major priority in implementing the standard. A project team, consisting of members drawn from HERs in England, Wales and Scotland, plus representatives of English Heritage, was therefore formed to develop the Profile, and met several times at the National Monuments Record in Swindon. This Compliance Profile is the result.

The Compliance Profile ensures consistency across the HER community

The project team looked at MIDAS Heritage from the viewpoint of an HER. MIDAS Heritage states that some information is mandatory; in other words, if you are going to use a particular Information Group (such as Monument, for example), there are certain Units of Information which you must include in order to be compliant with the MIDAS Heritage standard. Other Units of Information are optional, but a Compliance Profile can specify that, for a particular user community, these should be upgraded to mandatory. This has been done for the HER Compliance Profile in a number of places.

Concentrating on data, not on the system or recording practice

This Compliance Profile concentrates on dataset compliance only, not system compliance. MIDAS Heritage gives no guidance on the way in which users should implement the standard; it does not recommend a data structure for a database, for example, or specify the exact way a system should store data. (See p. 19 of MIDAS Heritage for details on this.) However, if you are designing a new HER database, the Compliance Profile will be invaluable during the design stage, to ensure that your system is compliant with MIDAS Heritage.

If you have an existing dataset, it can be mapped to MIDAS Heritage (in a process of comparing the information in the fields of your database with the units of information in MIDAS Heritage) to find out if you are compliant with the standard. Help is available from the Forum for Information Standards in Heritage (FISH) if you require it.

The Compliance Profile does not replace MIDAS Heritage. Rather, it creates a unique blueprint for the way in which HERs have agreed to use the standard. In order to use the Compliance Profile, you will have to refer closely to MIDAS Heritage itself.

MIDAS Heritage and the Compliance Profile also do not give guidance on recording practice; information on this can be gained from *Informing the Future of the Past: Guidelines for Historic Environment Records*, 2nd edition (www.ifp-plus.info).

What does Mandatory mean?

Both MIDAS Heritage and the HER Compliance Profile use the term Mandatory to describe some Units of Information. By this, we mean that it is mandatory to record the information where it is available. In some cases, information may be missing, for example the End Date of an activity which is still in progress. In other cases, it may be necessary to enter suitable default values for a Mandatory field. MIDAS Heritage gives more guidance on this issue (p.19 and p.26).

MIDAS Heritage is an ongoing work: you can become involved

MIDAS Heritage is a dynamic standard that is continuing to develop in response to the needs of the sector. If you would like to become involved in this work, you will be very welcome. The Forum for Information Standards in Heritage is the overseeing body (www.fish-forum.info) and we particularly welcome new members. Please visit our website for more details.

The HER Compliance Profile

How to use the HER Compliance Profile

The HER Compliance Profile sets out in detail which parts of MIDAS Heritage an HER should comply with (see the Introduction for more information on this). MIDAS Heritage itself contains comprehensive instructions on the creation and use of Compliance Profiles, and we recommend that you read this before you use this Compliance Profile (p. 17-21).

The HER Compliance Profile Table Explained In More Detail

Information Group – these are all defined clearly in MIDAS Heritage, with a section of the document devoted to each. Please refer to MIDAS Heritage to find out about them.

Mandatory? – the options in this column are either Mandatory or Aspirational. Mandatory Information Groups are those which the HER Compliance Profile working group felt were essential for an HER to record. Aspirational are those which an HER may record if it wishes, but are not essential. Mandatory and Aspirational in this column refer specifically to the HER Compliance Profile. You should note that if you do decide to use an Aspirational Information Group, you should comply with MIDAS Heritage as regards which Units of Information in that Information Group to record.

Compliance Level – the options here are Level 1 (basic compliance) and Level 2 (full compliance). Level 1 is where all Units of Information defined as Mandatory in MIDAS Heritage are recorded, and all relationships between Information Groups defined as Mandatory are also present. Level 2 builds on this, with the Optional Units of Information also recorded where appropriate, and the Optional relationships between Information Groups are present. Levels 1 and 2 in this column refer specifically to MIDAS Heritage. They do not equate to the benchmarks set out in *Historic Environment Records: Benchmarks for Good Practice, 2002*

Locally Mandatory Relationships – these are relationships which, although listed as Optional in MIDAS Heritage, are Mandatory in the HER Compliance Profile.

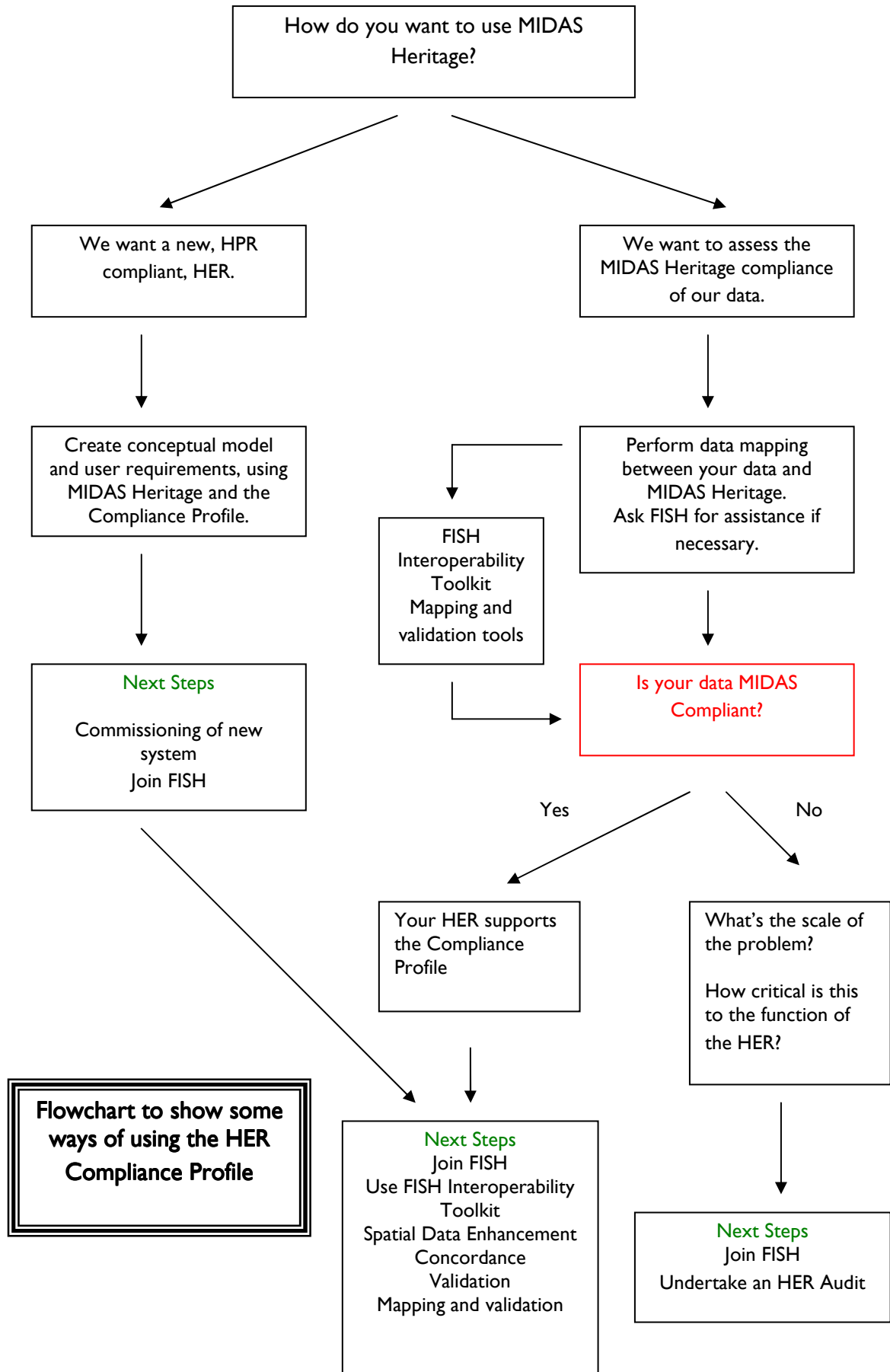
Locally Mandatory Units of Information – these are Units of Information whose recording is listed as Optional in MIDAS Heritage, but which have been defined in the HER Compliance Profile as Mandatory. (It is worth noting here that MIDAS Heritage provides a Dictionary of all the Units of Information, in which it defines each one separately together with some help on how to use it. The Dictionary of Units of Information can be found on p. 107 of MIDAS Heritage).

The HER Compliance Profile Table

| Information Group | Mandatory? | Compliance Level | Locally Mandatory Relationships | Locally Mandatory Units of Information |
|---|--------------|------------------|---|--|
| Area | Mandatory | Level 1 | Research and Analysis; Archive and Bibliography | |
| Monument | Mandatory | Level 1 | Map Depiction; Investigative Activity; Designation and Protection | Heritage Asset Name; External Information System; External Information System PRN; Evidence; Compiler (Person) |
| Artefact and Ecofact | Mandatory | Level 1 | Archive and Bibliography | |
| Investigative Activity | Mandatory | Level 2 | Map Depiction | Activity Name; Compiler (Person); External Information System PRN; External Information System |
| Designation and Protection | Mandatory | Level 2 | Map Depiction | External Information System; External Information System PRN |
| Heritage Asset Management Activity | Mandatory | Level 1 | Designation and Protection | Compiler (Person) |
| Casework and Consultation | Mandatory | Level 2 | Heritage Asset Management Activity | |
| Research and Analysis | Aspirational | | | |
| Historical Event | Aspirational | | Archive and Bibliography | |
| Archive and Bibliography | Mandatory | Level 2 | | |
| Narrative and Synthesis | Aspirational | | | |
| Management Activity Documentation | Mandatory | Level 1 | | Compiler (Person) |
| Location | Mandatory | Level 1 | | |
| Map Depiction | Mandatory | Level 2 | Heritage Asset Management Activity | Data Capture Process; Compiler (Person); Precision; Data Capture Scale |
| Date and Period | Mandatory | Level 2 | | Scientific Date; Scientific Date Method |
| Actor and Role | Mandatory | Level 1 | | Compiler (Person) |

Please note that **Designation and Protection** and **Heritage Asset Management Activities** are Information Groups which will be subject to review in the light of emerging legislation.

The grey fields in the table have been left intentionally blank.



Glossary of Terms

MIDAS Heritage contains a glossary of terms which are frequently used throughout the data standard. For your convenience, we have reproduced here the definitions of some of them. Please see the full MIDAS Heritage document for the entire glossary.

Compliance Profile

A document setting out a specific information system or dataset, or community. The level of compliance with the standard (Non-compliant, Level 1, Level 2) for each MIDAS Heritage Information Group.

Dataset

A collection of entries. The term is used to distinguish the data (the actual recorded facts) from the database or other information system, which is the hardware and software used to store and process the data.

Data Standard

A statement of what data should be recorded, and how the data should be recorded, to facilitate consistency between information system entries and between different information systems using the same standard.

Heritage Asset

The main subject of interest of most MIDAS Heritage information systems – the documented real world and conjectured or proposed things that the information recorded relates to. ‘Heritage Asset’ has a much broader definition within the context of Midas Heritage and is not limited to historic features which enjoy statutory protection.

Acknowledgements

The HER Compliance Profile was created by a project team who worked together to bring the document to publication. Thank you to everyone who participated.

Bruce Howard, English Heritage
Bruce Mann, Aberdeenshire County Council
Chris Martin, Clwyd-Powys Archaeological Trust
David Thomas, Royal Commission on the Ancient and Historical Monuments of Wales
Edmund Lee, English Heritage
Emma Turner, English Heritage
Gillian Grayson, English Heritage
Lisa Mullen, English Heritage
Sarah Poppy, Suffolk County Council
Stuart Cakebread, English Heritage
Suzy Blake, Staffordshire County Council
Victoria Bryant, Worcestershire County Council