

Event

## Yara El Sherbini *Universality Challenge*

Thursday 4 December 7pm, £3.50 / £2.50 concessions  
Loughborough University Student Union

*Universality Challenge* is a game show which playfully explores universal experiences; examining those all-important questions that shape our view of the world, like 'Is happiness a cigar called Hamlet? What colour is Michael Jackson? And do they drink Um Bongo in the Congo?'

Using the recognisable format of the British TV show 'University Challenge', participants will go head to head in a battle to win the title of *Universality Challenge*, in front of a live audience. The quiz show, made up of a university team versus a local team, with Yara as host, seeks to challenge universality, asking is what's good for the goose, good for the gander?

*Universality Challenge* was commissioned and first produced by Chelsea Theatre, London and is managed by Artsadmin.



Yara El Sherbini *Universality Challenge* 2008  
Photo by Manuel Váson



Parfyme Harbor Laboratory 2008

## Symposium

Loughborough University, 29 January 2009  
Cost: £10 (including lunch), to book email  
radar.info@lboro.ac.uk or tel. 01509 222 960

The symposium will focus on current artistic interest in responding to a social context, questioning its ability to be both conceptually interesting as well as offering a meaningful contribution to the society in which it takes place. It will focus on issues around authorship, the motivations behind an increase in engaged practice and the degree to which art can ultimately effect social change or social cohesion.

Speakers include; Dave Beech, Mel Jordan, Barbara Stevini, WochenKlasur, Public Works, Yvonne Droge Wendel, Lisa Cheung, Maggie O'Neill Gillian Whiteley.

A number of the commissioned projects will also be available to view on the day of the symposium.

Residency

## Parfyme

January/February 2009

Parfyme (perfume) is a four person collective spread across Copenhagen, Bergen and New York. They will be in Loughborough in January/February 2009 during which time they will research and develop a new piece of work.

Parfyme have developed and carried out a wide range of projects over the last 8 years. The projects take place in public settings and usually begin with a dialogue with a range of communities.

It is the unpredictable element in social encounters between people from across the spectrum that interests Parfyme. With works that are often streaked with humour, Parfyme want to introduce us to new ways of interacting with others and interfacing with the public realm.

December 2008 to February 2009

*A series of commissions to artists who share an interest in collaboration, exchange and interaction.*

# GROUP

# PROCESS

Yvonne Droge Wendel  
public works/myvillages.org  
Lisa Cheung  
Parfyme  
Yara El Sherbini



www.arts.lboro.ac.uk/radar/





myvillages.org International Village Shop

## public works/myvillages.org International Village Shop

Public Works and MyVillages.org are interested in local resources and producers and many of their projects set up forms of local and trans-local exchange often taking the idea of the rural village as a space/location for cultural production. Public Works / MyVillages.org have worked with villages across Europe on developing and producing a range of products that embody the traditions, resources and history of the village and arise through collaborative and cross-disciplinary discussions, skill demonstrations and on site creative exploration. Previous products have include Horsemilkshampoo from Friesland in the Netherlands, Buttersoons from Upper Frankonia in Germany and Titschy/Kitschy houses from Lawson Park in Cumbria.

For this new commission, they will work with a youth group in the village of Barrow on Soar and designers from the Sports Technology Institute to create two unique products that embody some particular aspect of their village, linking to either the history or the identity of that place. The produce will later become part of the International Village Shop, and will be traded both locally and across a wider rural network.

Public Works is a London based artists and architects collective, and current members are Kathrin Böhm, Polly Brannan, Torange Khonsari and Andreas Lang. All public works projects are within the public realm and address and implement participatory and cross hierarchical methodologies and projects. MyVillages.org is an international artist initiative, founded in 2003 by Kathrin Böhm (DE/UK), Wapke Feenstra (NL) and Antje Schiffrers (D), with a focus on the rural.

Yvonne Dröge Wendel is a visual artist based in Amsterdam. A central theme within her work is her with rethinking, making and restoring 'things'. What is the most enriching experience between object and human subject? How do people and 'things' relate? What might an 'object that listens to humans' look like?

Lisa Cheung is interested in art as a social space, taking as her inspiration everyday life and people. Her practice encompasses communal dinners, lighting installations, limited edition chinaware, mobile kitchens and performances.

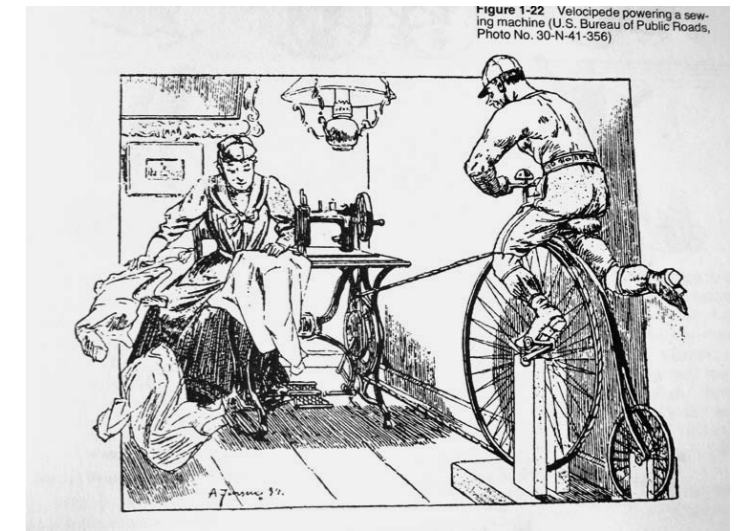
Yara El-Sherbini is an artist based in London. Her inter-disciplinary work uses site, context and audience to playfully explore art and life. From hosting pub quizzes to stand-up in comedy venues, she uses humour and popular culture to engage viewers.

## Lisa Cheung Velo-Rel-La

*Velo-Rel-La* is a mobile music station powered by a bicycle. The *Velo-Rel-La* unit will be transported around Loughborough to community centres, the university and various squares and streets playing music chosen by guest DJs.

*Velo-Rel-La* invites a broad spectrum of people to participate visiting different venues by invitation. It will act as the music system for a range of events from festivals to tea dances. Individuals from these communities are also invited to be a "DJ for a day". Energetic volunteers are invited to help cycle the music station to its destination, as well as through cycle-generated-power, produce the electricity to power the CD players, turntable and speakers.

*Velo-Rel-La* uses the green technology of bicycle-power to generate the electricity needed. It also refers to the past, simple technologies of wind up power of gramophone and music boxes.



Lisa Cheung *Velo-Rel-La*

*Velo-Rel-La* has been developed in collaboration with Sammy Delgado Escabor and will be launched on Friday 12 December, 12–3.30pm on Church Gate. For further dates check the Radar website.

## Yvonne Droge Wendel Item Store

Student Union foyer from 22 January to 12 February

Yvonne Dröge Wendel has created 'Item Store', a custom built unit that will present a variety of quizzical objects that invite discussion and open interaction.

The objects in the Item Store are something and nothing at the same time. They are similar in terms of form and colour and their display unit is as attractive as the objects itself. The objects do not have features that enable categorization but offer enough visual stimulus to enable thoughts, ideas and interpretations. They offer just enough qualities to attract attention and to open themselves up to negotiation and discussion. Every object in the store also has a label that plays a crucial role, both offering and denying a role for the object and prompting a range of manuals, images and histories. The same object can embody a range of functions from fashion item to toy to collectors item to art object to interior decoration.

Item Store will be open for business in the Student Union Foyer, welcoming visitors and inviting them to contribute. It will be also be presented at the Department of Materials and Loughborough Market.



Yvonne Droge Wendel *Item Store*