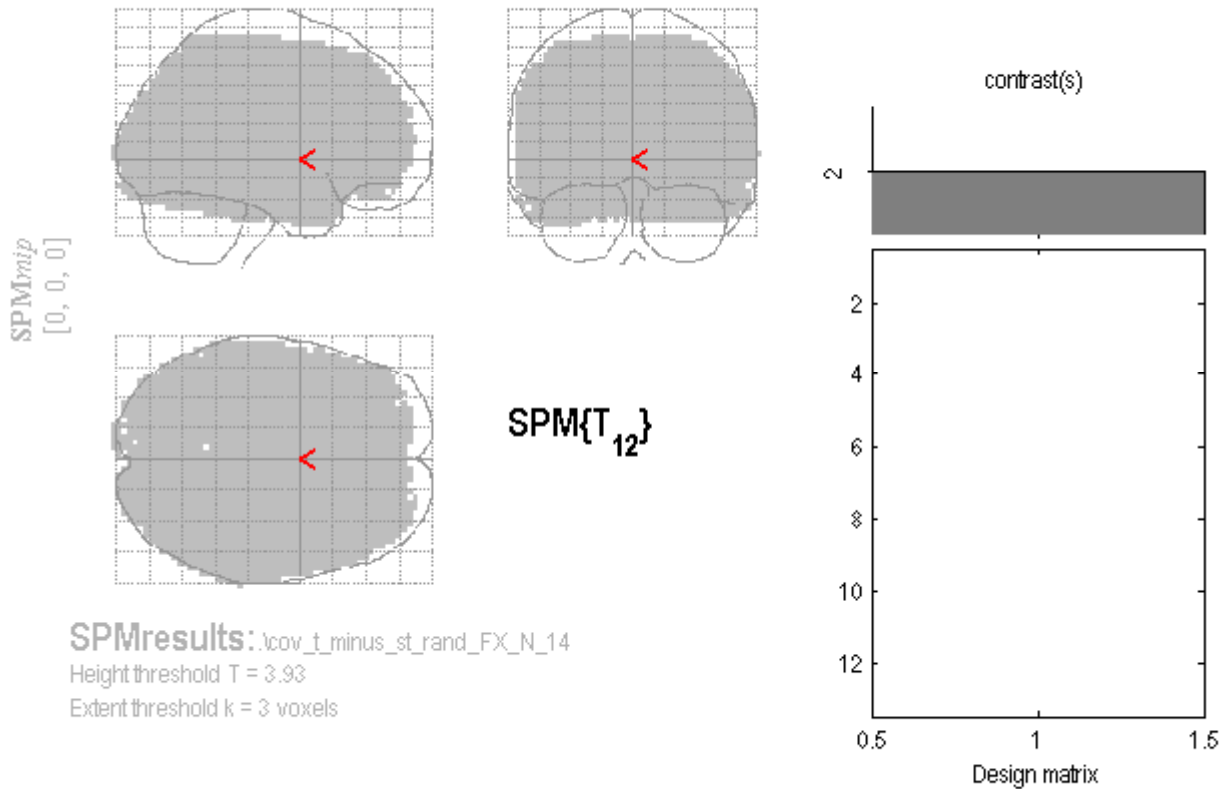


covert: tense minus stem N=13



Statistics: p-values adjusted for search volume

set-level		cluster-level			voxel-level					x,y,z {mm}	
p	c	p _{corrected}	k _E	p _{uncorrected}	p _{FWE-corr}	p _{FDR-corr}	T	(Z)	p _{uncorrected}		
0.000	15	0.000	12066	0.000	0.000	0.000	Inf	Inf	0.000	24	-3 -30
					0.000	0.000	Inf	Inf	0.000	48	12 -30
					0.000	0.000	Inf	Inf	0.000	9	-69 -24
		0.989	3	0.429	0.000	0.000	Inf	Inf	0.000	-51	-51 48
		0.989	3	0.429	0.000	0.000	24897970060	88782000000000000000	0.000	0	0 0 180
		0.989	3	0.429	0.000	0.000	44012622846	14158800000000000000	0.000	0	0 0 185
		0.935	6	0.261	0.000	0.000	23112311219	82791900000000000000	0.000	0	0 0 180
		0.989	3	0.429	0.000	0.000	20994219184	14457600000000000000	0.000	0	0 0 183
		0.977	4	0.358	0.000	0.000	26825132665	14556800000000000000	0.000	0	0 0 112
		0.935	6	0.261	0.000	0.000	10033643658	14443900000000000000	0.000	0	0 0 1054
		0.989	3	0.429	0.000	0.000	16383035891	14470830000000000000	0.000	0	0 0 680 33
		0.935	6	0.261	0.000	0.000	14138183896	14478780000000000000	0.000	0	0 0 88 10 3
		0.959	5	0.304	0.000	0.000	17988119854	14458400000000000000	0.000	0	0 0 70036 48
		0.989	3	0.429	0.000	0.000	12695111370	14461630000000000000	0.000	0	0 0 -72 18
		0.977	4	0.358	0.000	0.000	42942599804	14421610000000000000	0.000	0	0 -39 54 9
		0.959	5	0.304	0.000	0.000	63936689679	144457600000000000	0.000	0	0 39 15 27
		0.989	3	0.429	0.000	0.000	12663311504	144290800000000000	0.000	0	0 -6 -48 45

table shows 3 local maxima more than 8.0mm apart

Height threshold: T = 3.93, p = 0.001 (1.000)
 Extent threshold: k = 3 voxels, p = 0.429 (0.989)
 Expected voxels per cluster, <k> = 5.116
 Expected number of clusters, <c> = 4.50
 Expected false discovery rate, <=> 0.00

Degrees of freedom = [1.0, 12.0]
 Smoothness FWHM = 12.5 13.8 13.0 {mm} = 4.2 4.6 4.3 {voxels}
 Search vol: 1318059 cmm; 48817 voxels; 524.7 resels
 Voxel size: [3.0, 3.0, 3.0] mm (1 resel = 83.22 voxels)