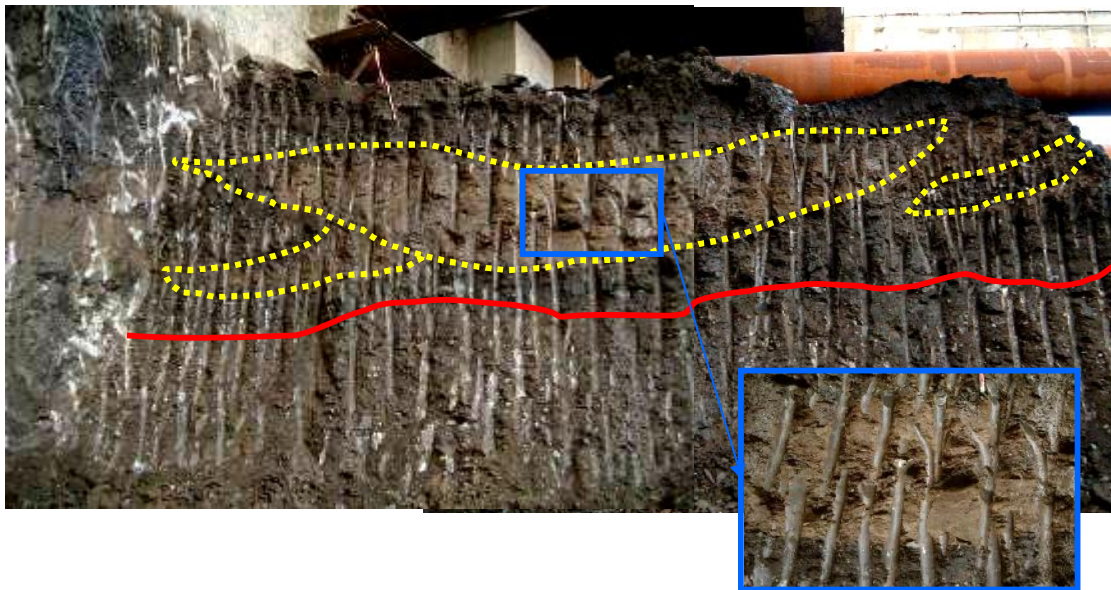




CPD workshops for engineering geologists and geotechnical engineers



The Stratigraphy and Engineering Geology of Dublin soils

A one-day workshop led by Dr. Jackie Skipper (Geotechnical Consulting Group & Natural History Museum, London), Dr. Mike Long (University College Dublin), Dr Chris Menkiti (Geotechnical Consulting Group) Beatriz Mozo (GSI), Dr Eric Farrell (Trinity College Dublin), Dr Trevor Orr (TCD) & Dr Kenneth Gavin (UCD).

Tuesday 2nd December 2008

Following on from the very successful course last year, we will be covering the modern geotechnical and engineering geological interpretation of the Quaternary and Holocene Soils of Dublin, and their relationship with the underlying geology. With major rail works about to start in Dublin, there has never been a more important time to attend! The contributors include a wide range of leading experts on the subject, and delegates will learn how to identify and predict the stratigraphy, and become familiar with possible variations in behaviour and physical parameters. We will study hand- and core specimens whenever possible, and discuss various case histories with respect to design and construction of civil engineering works.

The course is CPD approved by Engineers Ireland.

The workshop will take place between 9.30am and 5pm in the Newstead Building (Dept of Civil Engineering), University College Dublin, Richview, Belfield, Dublin 4 Ireland, and is inclusive of coffee, lunch and tea. Joining instructions will be sent on receipt of payment.

To reserve a place on this course please complete the form below (one per delegate) and send by post, with a cheque paid to 'Geotechnical Consulting Group Ltd' to:

K.You, Geotechnical Consulting Group, 52A Cromwell Road, LONDON SW7 5BE, UK. email k.you@gcg.co.uk. A VAT invoice will be provided on receipt. Please ring +44 (0)20 7581 8348 if you have any queries about the courses or wish to pay by BACS.

A reduction of 10% is available for Fellows (or Chartered Members) of the Geological Society, Institute of Geologists of Ireland, Institution of Civil Engineers, or Engineers Ireland. A limited number of places for students are available (at a 50% reduction) – but please ring and confirm availability before booking.

Fee Payable: Industry full FGS/ICE/EI/IGI Student
 (inc. VAT) £258.50/€360 £232.65/€324 £129.25/€180

First Name:	Surname:
Organisation:	
Address:	
Post Code:	
Telephone:	Fax:
Email:	
I am a member of:	Membership number:

Signed:

Date:

Please note below if you have any dietary requirements or disabilities