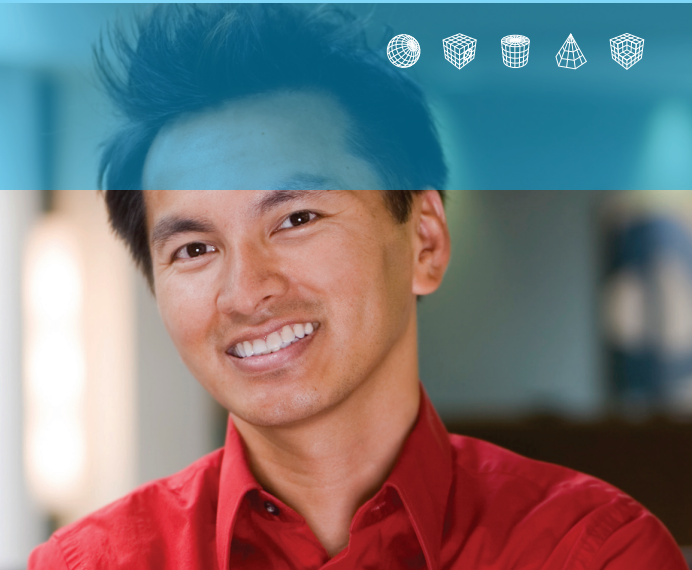
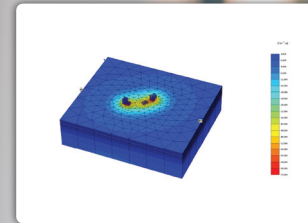
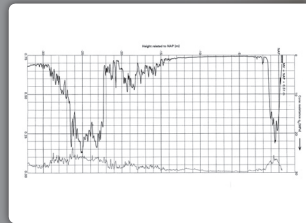
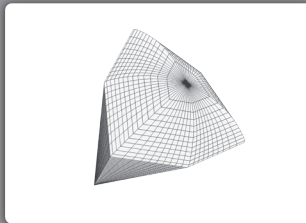


(SENIOR) RESEARCHER, STRUCTURAL ELEMENTS IN GEOTECHNICS



ABOUT PLAXIS

Plaxis bv is world market leader in the field of development, sales and support of 2D and 3D finite element software for geotechnical calculations.

The software is mainly used by engineering consulting firms who are involved in analysis and design of large construction and infrastructural projects. With the high-tech products, Plaxis is at the base of many prestigious projects all over the world. In Delft, 25 professionals are active in the field of development, marketing and user support.

The Research & Projects department of Plaxis bv is involved in research, product definition and special projects. Here, a direct or indirect contribution is given to the development of the advanced Plaxis products. In this department specialized knowledge is available in the field of numerical methods, constitutive soil models, modelling of flow processes, structural behaviour and dynamics. Currently, there is a vacancy for a specialist on structural elements and soil-structure interaction.

TASK DESCRIPTION

Structural elements (walls, plates, anchors, piles, etc.) play an important role in geotechnical applications. The behaviour of structural elements may be linear, non-linear, anisotropic or time-dependent. The interaction between structures and the surrounding soil may involve sliding, gapping and other bearing capacity related issues.

The specialist must be capable to define, plan, manage and execute research projects related to the numerical modelling of structural elements and to robustly implement the results in the finite element method as a member of a Plaxis product development team. The researcher also acts as project leader and maintains contacts with clients, universities and other external parties.

REQUIREMENTS

The candidate should possess the following qualifications:

- PhD in the field of Geo-engineering, Mechanical engineering or Aerospace engineering.
- Experience with use and implementation of the finite element method.
- Hands-on programming experience (Fortran).
- Good communication and project management skills, team player.

WE OFFER

- Market conform salary and benefits.
- Stimulating innovative work environment.
- Position to create leading high-tech products.
- Possibility to build a network of (academic) contacts.

HOW TO APPLY:

Send your application letter and resume to:

Plaxis bv • Attn: dr. Ronald Brinkgreve

E-mail: r.brinkgreve@plaxis.nl • Tel: +31 (0)15 2517720

Delftechpark 53 • P.O. Box 572 • 2600 AN Delft • The Netherlands