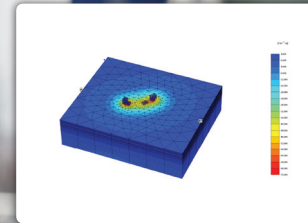
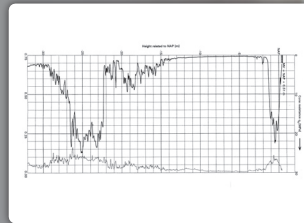
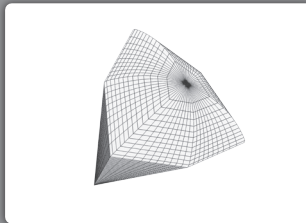


## (SENIOR) ADVISOR 'SPECIAL PROJECTS'



### ABOUT PLAXIS

Plaxis bv is world market leader in the field of development, sales and support of 2D and 3D software for geotechnical calculations.

The software is mainly used by engineering consulting firms involved in the realisation of large construction and infrastructural projects. With the high-tech and complete products, Plaxis is at the base of many prestigious projects all over the world. In Delft, 25 professionals are active in the field of development, marketing and user support.

The Research & Projects department of Plaxis bv is involved in research, product definition and special projects. Here, a direct or indirect contribution is given to the development of the advanced Plaxis products and the fulfillment of client needs. In this department specialized knowledge is available in the field of numerical methods, constitutive soil models, modelling of flow processes, structural behaviour and dynamics. Currently, there is a vacancy for an advisor in Special Projects.

### TASK DESCRIPTION

Special Projects is a high-end support service, aiming to support clients (users of the Plaxis software) with advanced (3D) geotechnical finite element modelling issues, model parameter selection on the basis of geotechnical reports, the definition and execution of calculation phases, interpretation and evaluation of results or reports, knowledge transfer and dedicated courses. Purpose of this paid service is to help clients improving their own modelling expertise and to increase the standard in numerical modelling of geotechnical applications.

The advisor is expected to plan, execute and report projects and results by his/her own. He/she also acts as project leader and maintains contacts with clients, universities and other external parties.

### REQUIREMENTS

The candidate should possess the following qualifications:

- MSc in the field of Geo-engineering or similar.
- Extensive experience in the practical application of numerical methods in Geo-engineering.
- Good communication and educational skills.
- Project management skills.

### WE OFFER

- Market conform salary and benefits.
- Stimulating innovative and knowledge-driven work environment.
- Position to work on prestigious international projects.
- Possibility to build a personal network of clients.

### HOW TO APPLY:

Send your application letter and resume to:

Plaxis bv • Attn: dr. Ronald Brinkgreve

E-mail: r.brinkgreve@plaxis.nl • Tel: +31 (0)15 2517720

Delftechpark 53 • P.O. Box 572 • 2600 AN Delft • The Netherlands