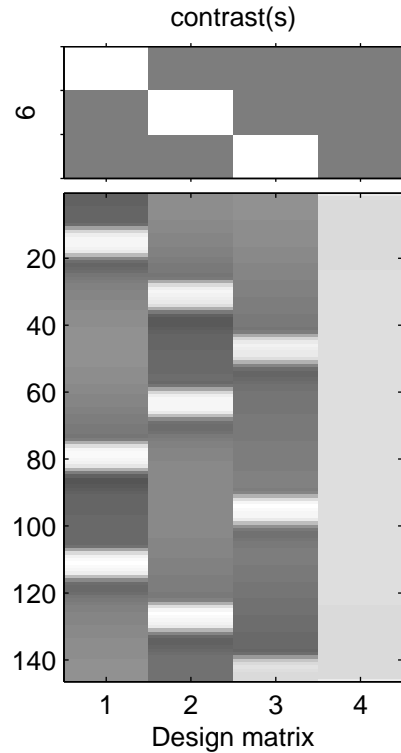
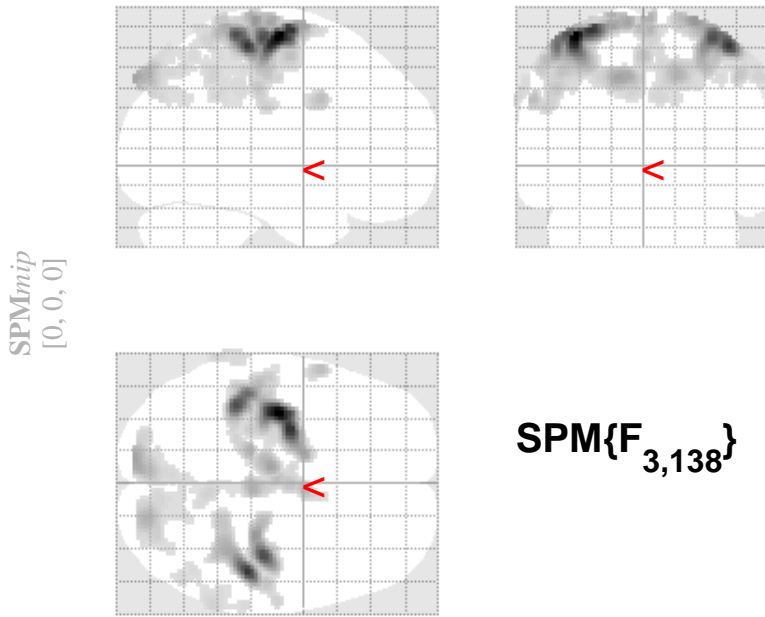


alles



SPMresults:/octmp/Nifti/spm_nochma/4d
 Height threshold F = 5.732829 {p<0.001 (unc.)}
 Extent threshold k = 60 voxels

Statistics: p-values adjusted for search volume

set-level		cluster-level			voxel-level					mm mm mm		
p	c	p _{corrected}	k _E	p _{uncorrected}	p _{FWE-corr}	p _{FDR-corr}	F	(Z _≡)	p _{uncorrected}			
8			2180		0.000	0.000	124.82	Inf	0.000	-36	-12	68
					0.000	0.000	95.04	Inf	0.000	-28	-6	70
					0.000	0.000	79.70	Inf	0.000	-40	-36	68
					0.000	0.000	91.87	Inf	0.000	46	-30	62
					0.000	0.000	79.07	Inf	0.000	38	-22	66
					0.000	0.000	41.48	Inf	0.000	28	-26	74
					0.000	0.000	36.31	Inf	0.000	-12	-90	46
					0.000	0.000	29.22	7.63	0.000	18	-84	48
					0.036	0.000	10.86	4.62	0.000	8	-80	36
					0.000	0.000	27.39	7.42	0.000	4	0	70
					0.000	0.000	21.52	6.63	0.000	0	-8	56
					0.000	0.000	23.45	6.91	0.000	-60	10	34
					0.003	0.000	13.23	5.16	0.000	64	-48	46
					0.185	0.001	9.20	4.19	0.000	64	-30	50
					0.267	0.001	8.80	4.08	0.000	46	-58	58
					0.003	0.000	13.21	5.16	0.000	4	-50	64
					0.867	0.006	6.96	3.52	0.000	2	-38	52
					0.984	0.013	6.24	3.27	0.001	2	-58	62
0.024	0.000	11.27	4.72	0.000	-66	-44	38					
0.206	0.001	9.08	4.16	0.000	-64	-34	42					
0.664	0.003	7.57	3.72	0.000	-68	-36	34					

table shows 3 local maxima more than 8.0mm apart

Height threshold: F = 5.73, p = 0.001 (0.999) {p<0.001 (unc.)} Degrees of freedom = [3.0, 138.0]
 Extent threshold: k = 60 voxels, p = FWHM = 14.0 13.6 13.3 mm mm mm; 7.0 6.8 6.7 {voxels};
 Expected voxels per cluster, <k> = 23.143 Volume: 1051040; 131380 voxels; 379.6 resels
 Expected number of clusters, <c> = Voxel size: 2.0 2.0 2.0 mm mm mm; (resel = 317.67 voxels)
 Expected false discovery rate, <= 0.02