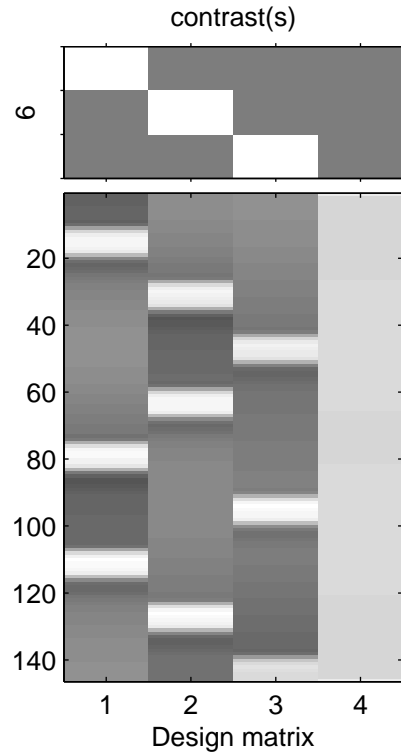
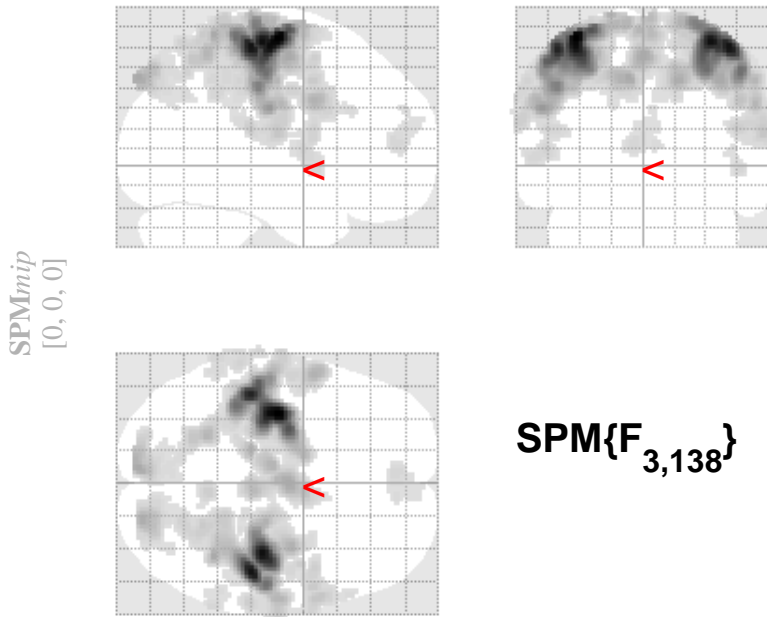


# alles



SPMresults:/loctmp/Nifti/spm\_nochma/3d  
 Height threshold F = 5.732829 {p<0.001 (unc.)}  
 Extent threshold k = 60 voxels

## Statistics: p-values adjusted for search volume

set-level		cluster-level			voxel-level					mm mm mm		
$p$	$c$	$p_{corrected}$	$k_E$	$p_{uncorrected}$	$p_{FWE-corr}$	$p_{FDR-corr}$	$F$	$(Z_{\equiv})$	$p_{uncorrected}$			
9			10713		0.000	0.000	170.55	Inf	0.000	-36	-14	66
					0.000	0.000	153.46	Inf	0.000	36	-22	64
			528		0.000	0.000	151.74	Inf	0.000	46	-28	62
					0.000	0.000	43.33	Inf	0.000	-8	-88	46
			653		0.672	0.000	9.14	4.18	0.000	-12	-66	46
					0.693	0.000	9.08	4.16	0.000	-6	-72	48
			67		0.000	0.000	42.55	Inf	0.000	18	-86	44
					0.488	0.000	9.63	4.31	0.000	18	-62	36
			277		0.932	0.001	8.28	3.93	0.000	8	-80	36
					0.000	0.000	19.04	6.24	0.000	6	-50	66
			152		1.000	0.004	6.55	3.38	0.000	12	-54	72
					0.002	0.000	14.96	5.52	0.000	-62	-34	44
			65		0.015	0.000	13.27	5.17	0.000	-68	-24	36
					0.031	0.000	12.62	5.03	0.000	-64	-46	38
			242		0.006	0.000	14.15	5.35	0.000	-52	0	8
					0.054	0.000	12.07	4.91	0.000	-58	4	4
			61		0.011	0.000	13.56	5.23	0.000	64	-48	46
					0.819	0.000	8.72	4.06	0.000	56	-44	58
					0.013	0.000	13.41	5.20	0.000	-6	50	12
					0.650	0.000	9.20	4.19	0.000	6	50	12
					0.984	0.001	7.86	3.81	0.000	6	60	20
					0.041	0.000	12.33	4.97	0.000	52	8	-2
					1.000	0.002	7.22	3.61	0.000	48	-2	6

table shows 3 local maxima more than 8.0mm apart

Height threshold: F = 5.73, p = 0.001 (1.000) {p<0.001 (unc.) Degrees of freedom = [3.0, 138.0]}  
 Extent threshold: k = 60 voxels, p = FWHM = 7.8 7.7 7.7 mm mm mm; 3.9 3.8 3.8 {voxels};  
 Expected voxels per cluster, <k> = 4.193 Volume: 1051040; 131380 voxels; 2095.1 resels  
 Expected number of clusters, <c> = Voxel size: 2.0 2.0 2.0 mm mm mm; (resel = 57.56 voxels)  
 Expected false discovery rate, <= 0.01