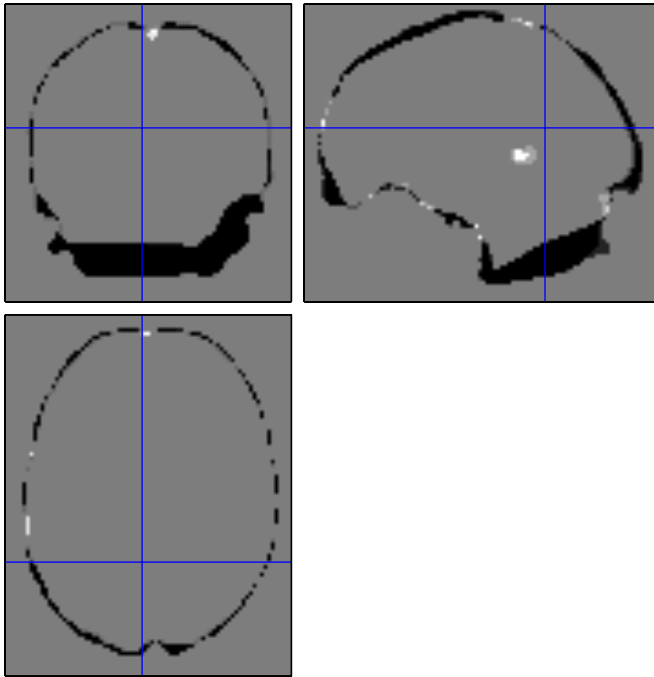
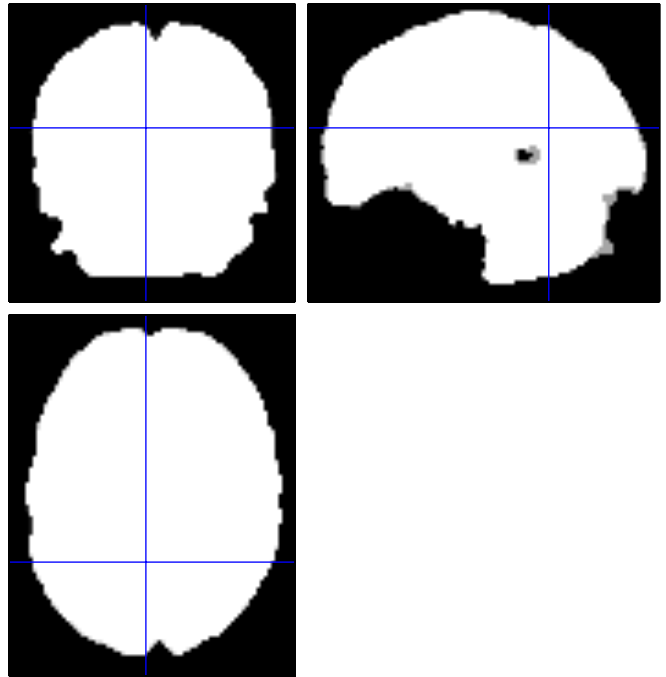


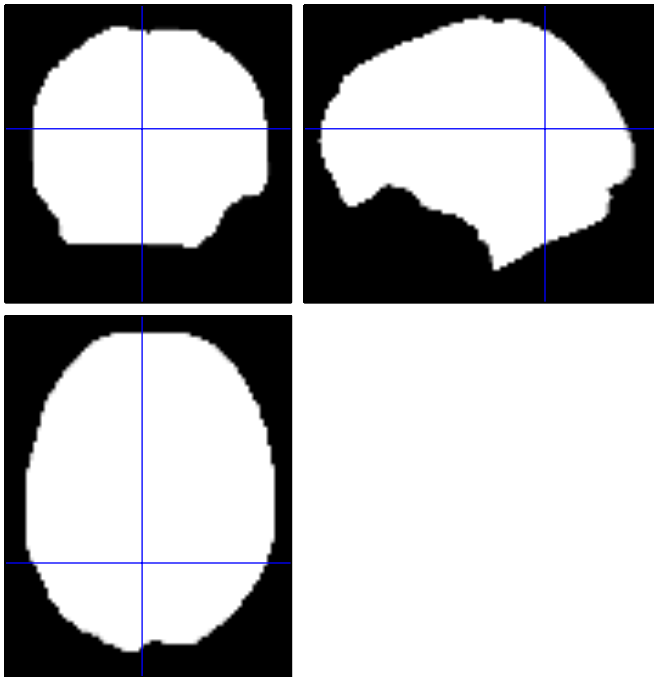
Mask A - Mask B



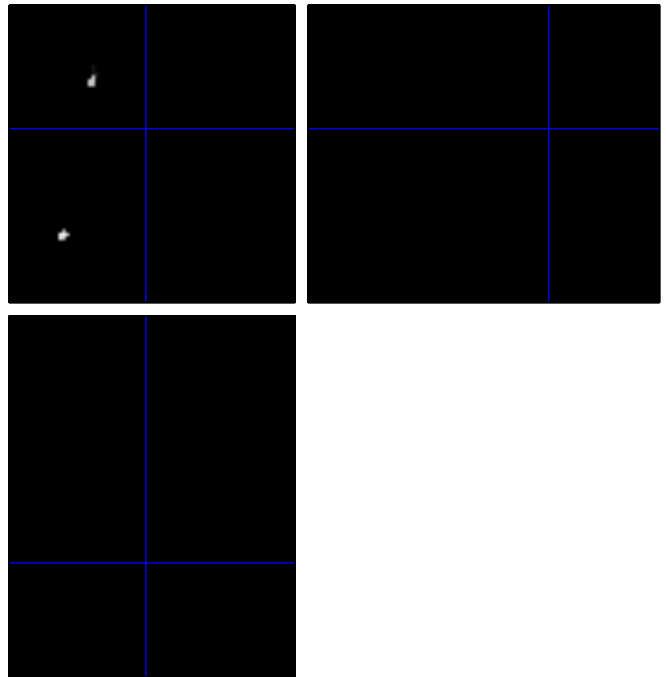
Mask B



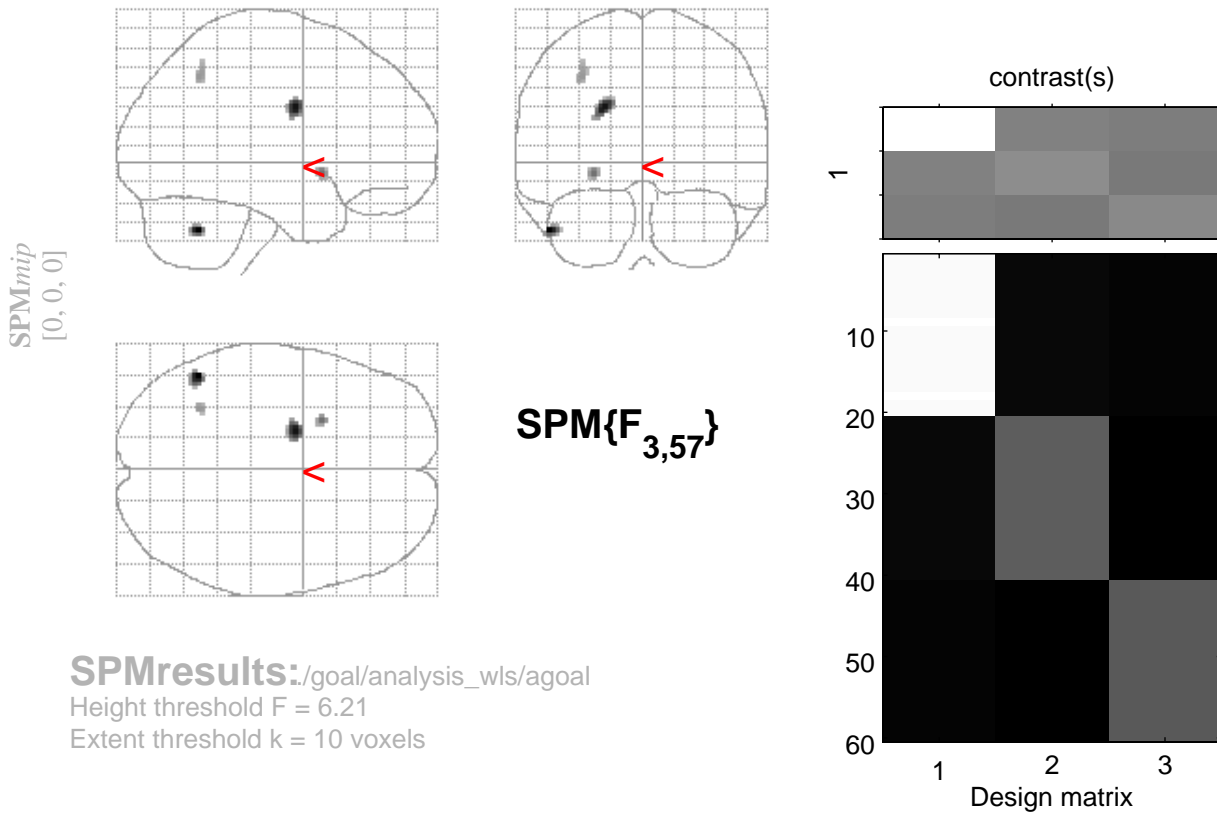
Mask A



Location of voxels I'm interested in - well inside mask



# Analysis using Mask B



## Statistics: *p-values adjusted for search volume*

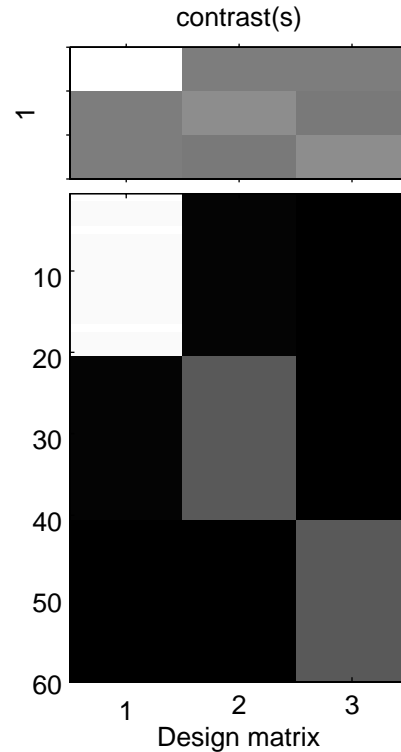
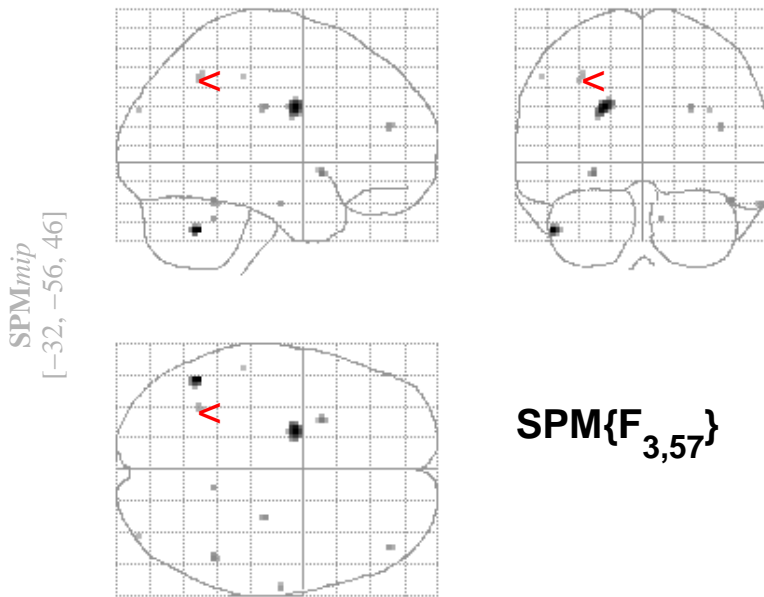
set-level		cluster-level			voxel-level					x,y,z {mm}		
$p$	$c$	$p_{\text{corrected}}$	$k_E$	$p_{\text{uncorrected}}$	$p_{\text{FWE-corr}}$	$p_{\text{FDR-corr}}$	$F$	$(Z_{\equiv})$	$p_{\text{uncorrected}}$			
4			22		0.823	0.999	9.09	3.88	0.000	-50	-56	-36
			47		0.907	0.999	8.70	3.79	0.000	-20	-4	30
			15		0.999	0.999	7.34	3.43	0.000	-26	10	-6
			15		1.000	0.999	6.76	3.26	0.001	-32	-56	46

table shows 3 local maxima more than 8.0mm apart

Height threshold: F = 6.21, p = 0.001 (1.000)  
Extent threshold: k = 10 voxels, p =  
Expected voxels per cluster, <k> = 14.735  
Expected number of clusters, <c> =  
Expected false discovery rate, <= 1.00

Degrees of freedom = [3.0, 57.0]  
Smoothness FWHM = 12.3 12.6 11.7 {mm} = 6.1 6.3 5.8 {voxels}  
Search vol: 1814800 cmm; 226850 voxels; 932.3 resels  
Voxel size: [2.0, 2.0, 2.0] mm (1 resel = 225.38 voxels)

# Analysis using mask A



**SPMresults:**./goal/analysis\_wls/agoal  
 Height threshold F = 6.21  
 Extent threshold k = 0 voxels

## Statistics: *p-values adjusted for search volume*

set-level		cluster-level			voxel-level					x,y,z {mm}		
<i>p</i>	<i>c</i>	<i>p</i> <sub>corrected</sub>	<i>k</i> <sub>E</sub>	<i>p</i> <sub>uncorrected</sub>	<i>p</i> <sub>FWE-corr</sub>	<i>p</i> <sub>FDR-corr</sub>	<i>F</i>	( <i>Z</i> <sub>≡</sub> )	<i>p</i> <sub>uncorrected</sub>			
0.859	11		12		0.913	1.000	8.44	3.72	0.000	-48	-56	-36
			38		0.925	1.000	8.37	3.70	0.000	-20	-4	30
			5		1.000	1.000	6.94	3.31	0.000	-26	10	-6
			4		1.000	1.000	6.82	3.28	0.001	48	-48	-20
			3		1.000	1.000	6.70	3.24	0.001	26	-20	30
			3		1.000	1.000	6.60	3.21	0.001	42	46	20
			1		1.000	1.000	6.57	3.20	0.001	10	-48	-30
			2		1.000	1.000	6.54	3.19	0.001	64	-12	-22
			4		1.000	1.000	6.39	3.14	0.001	-32	-56	46
			1		1.000	1.000	6.28	3.11	0.001	36	-88	28
			1		1.000	1.000	6.23	3.10	0.001	-54	-32	46

table shows 3 local maxima more than 8.0mm apart

Height threshold: F = 6.21, p = 0.001 (1.000)

Extent threshold: k = 0 voxels, p = 1.000 (1.000)

Expected voxels per cluster, <k> = 15.047

Expected number of clusters, <c> = 14.57

Expected false discovery rate, <= 1.00

Degrees of freedom = [3.0, 57.0]

Smoothness FWHM = 12.3 12.6 11.8 {mm} = 6.1 6.3 5.9 {voxels}

Search vol: 1563032 cmm; 195379 voxels; 790.3 resels

Voxel size: [2.0, 2.0, 2.0] mm (1 resel = 230.16 voxels)