

# Newham Population

Chris Sale

Corporate GIS and Information Manager

# Population

- **Newham has one of the fast growing populations.**
- **There had been issues from the 2001 Census on the correct count for the Borough's population.**
- **Changes to ONS methodology and the Census now align the population more.**

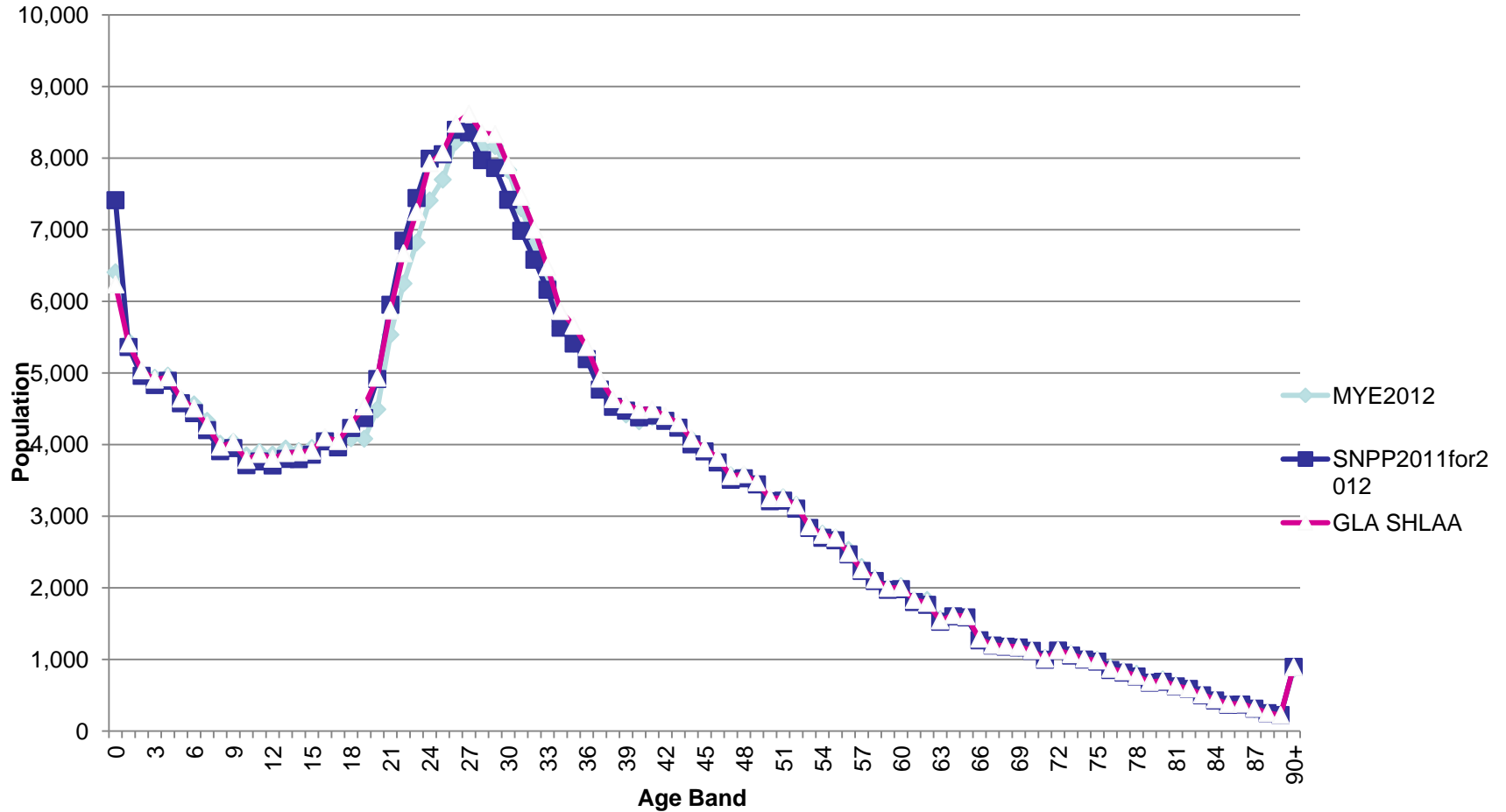
## Pre Census Studies

- 2007 Mayhew Harper Study – estimated the borough's population to be 270,091, some 20,491 above the 2007 Mid Year Estimate.
- 2011 Mayhew Harper Study – estimated the population at 297,822 below the Census by approximately 10,000

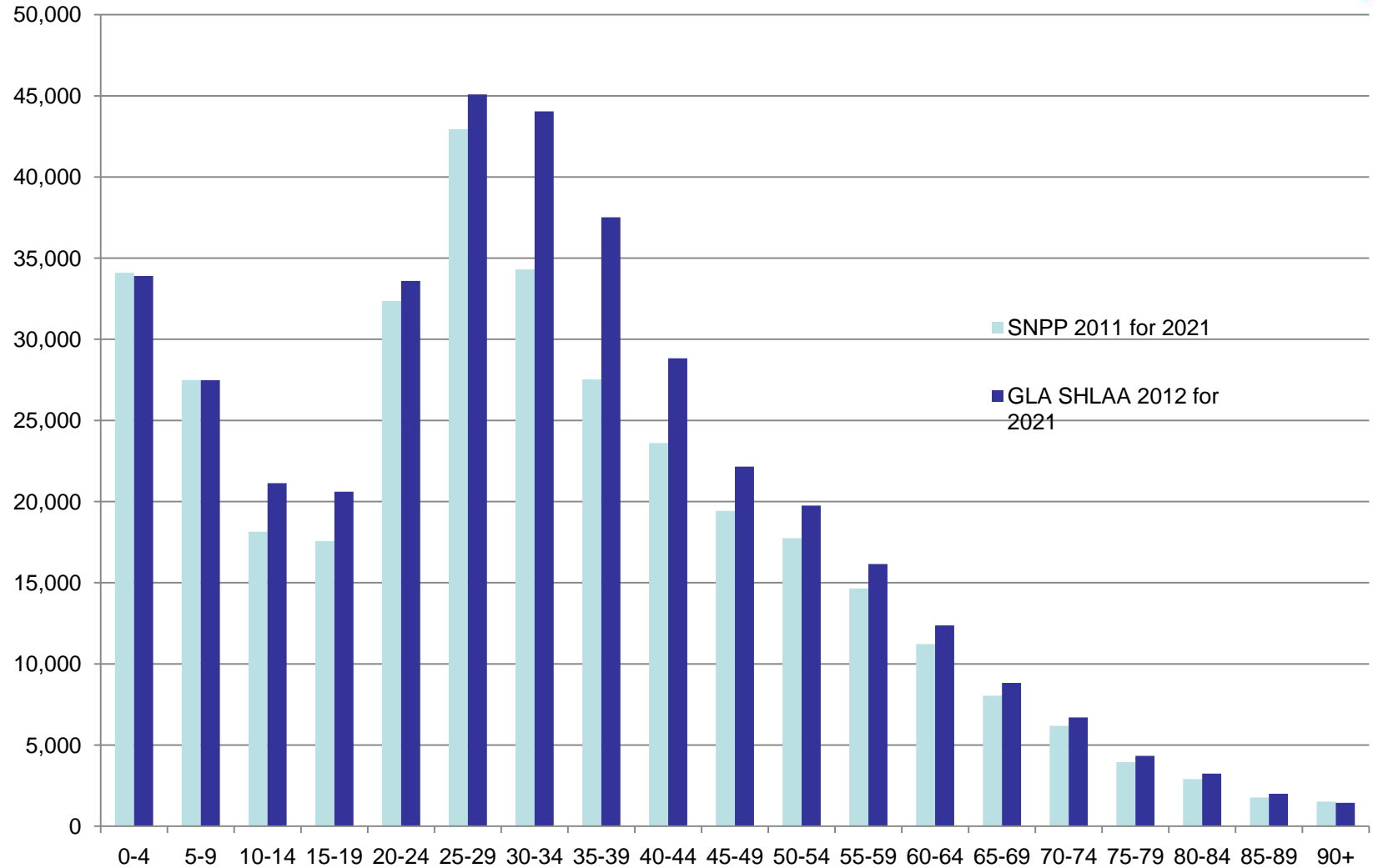
# Population

	Population			
	Total	0 to 18	19 to 64	65+
Census 2001	243,900	75,400	146,600	21,900
Census 2011	308,000	82,000	205,400	20,600
MYE 2012	314,100	83,900	209,000	21,200
SNPP 2011 Interim for 2012	314,400	83,400	210,000	21,019
GLA Proj SHLAA2012	319,500	83,500	214,700	21,310

# Population Comparison



# Projected Population



# What we see in the Census

Of the borough's Census population 31% arrived in the UK between the 2001 and 2011 Census – The highest in London

The Census reports that Newham's residents come from over 200 different countries.

Average Household size of 3

# Change

- The Electoral Register adds around 4000 a year.
- Increase in births, decrease in deaths.
- Natural change looks like the key driver in population increase.



## The Future

- Continue to Monitor Population Statistics,
- Possible further studies