

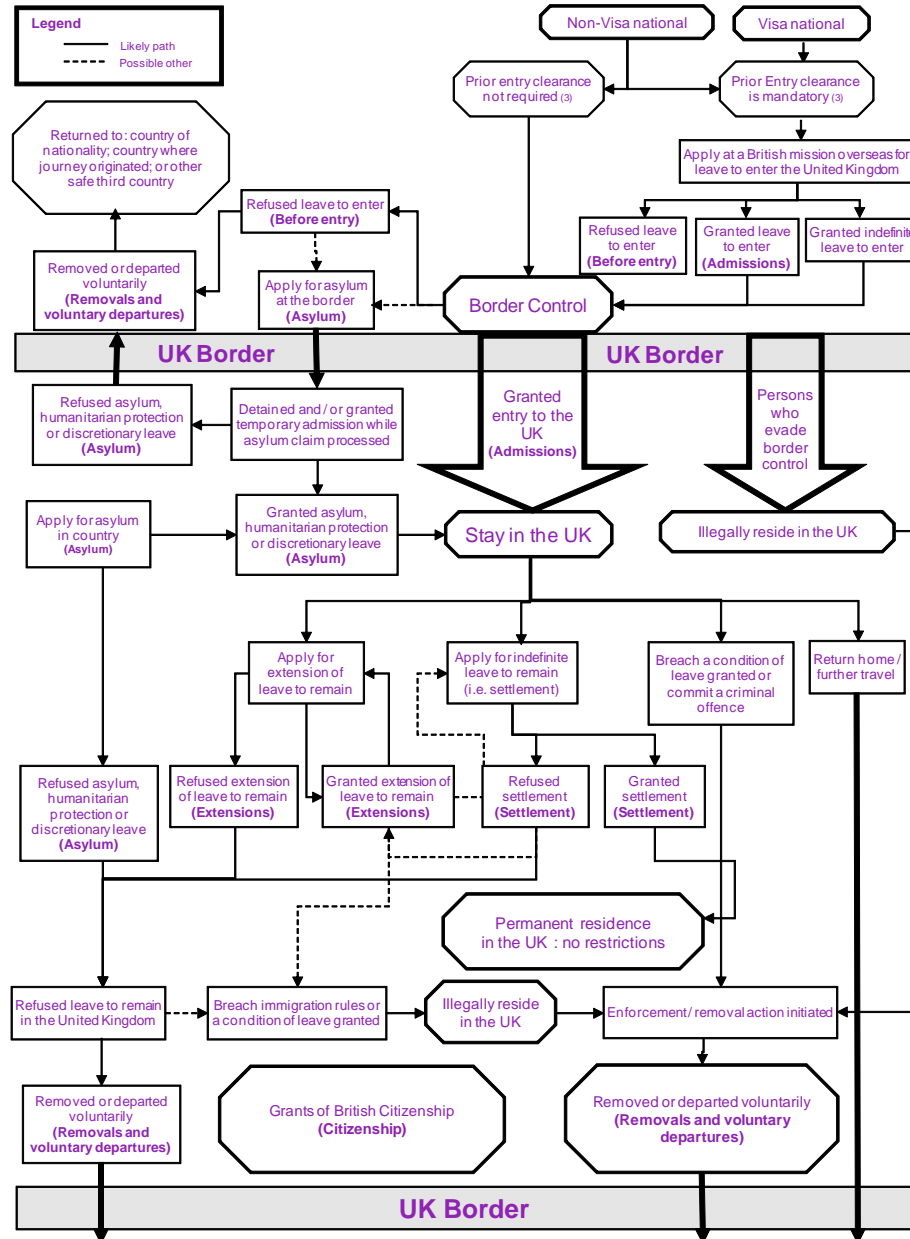


Home Office

New Developments for Home Office Migration Statistics

Presented by: Chris Kershaw & David Matz
Home Office Statistics
17 September 2013

Summary flowchart - Control of Immigration (1)(2)



the system is complicated:

(1) This flowchart provides a summary of immigration control and does not include a reference to all aspects of immigration; including people detained under Immigration Rules (information on which can be found in the 'Detention' topic). The chart also excludes references to resettled refugees and persons that 'switch' their immigration status.

(2) For definitions, please refer to the glossary of terms section of this user guide.

(3) Non-visa nationals seeking to enter the United Kingdom in a visa category or for longer than 6 months require a visa, whereas those seeking to enter the United Kingdom for 6 months or less do not.

Significant media coverage – data remains high profile

29 August 2013 Last updated at 12:49

Net migration to UK increases National Statistics

Net migration to the UK increased in the year ending December 2012, the Office for National Statistics says.

Latest figures show net migration rose to 176,000 - up from 153,000 people in the year to September 2012.

The increase appears to buck the trend of a decline in net migration - the difference between the number of people coming to and leaving the country.



Nearly nine million immigrants arrived in last year

Increase in net UK migration causes headache for David Cameron and Theresa May

Thursday 29 August 2013

Increase in net flow recorded as 30,000 fewer migrants left Britain

Immigration surge driven by eurozone crisis

Britain has seen a massive surge in the number of immigrant work as they flee economic collapse in Eurozone countries as Italy, official figures have disclosed for the first time.



Spain has a jobless rate of more than 26 per cent compared with Britain's 7.6 per cent

By David Barrett, Home Affairs Correspondent
9:00PM BST 29 August 2013



Follow

240 Comments

The number of Spaniards registering for a National Insurance number rocketed from just over 30,000 in 2011-12 to more than 45,500 last year, a jump of 50 per cent.



'Running out of options' Immigration into UK on the up as British nationals emigrate

NET IMMIGRATION into the UK has increased as fewer British and EU citizens emigrate from the country, figures have revealed.

By Benjamin Russell

Published: Thu, August 29, 2013

Comments

Twitter



News UK news Immigration and asylum

Figures show rise in labour migration from crisis-hit eurozone nations

Number of national insurance registrations by non-EU workers at 10-year low while number by Spanish and Greeks on rise

Alan Travis, home affairs editor
theguardian.com, Thursday 29 August 2013 14:12 BST
Jump to comments (9)



The total tally of new national insurance numbers issued to overseas workers last year fell by 39,000 to 562,000. Photograph: Rex Features

There have been increases of up to 50% in migration to Britain from Greece, Spain, Italy and Portugal, according to official figures from the Department for Work and Pensions.

The new data shows little evidence, however, of any surge in Romanians or Bulgarians arriving in advance of the end-of-year deadline to lift restrictions on them working in Britain.

In fact, the figures on new national insurance registrations by overseas workers show a fall in the number of Romanians (down 22% year on year to 17,020) and Bulgarians (down 17% to 10,400) coming to work in Britain in 2012/13.



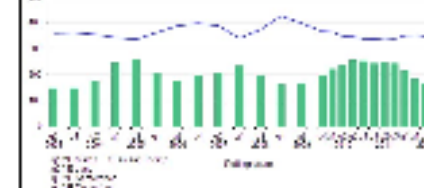
Cameron's pledge to cut net migration falls because not enough people have left Britain

Not only did it, the Office for National Statistics said, but the number of people leaving the country fell by 30,000 in the year ending December 2012, up from 153,000 in the year to September 2012.

257 Comments

The Government's attempt to curb net migration rose sharply in a surprise announcement in the Budget because the net increase in more than a year because the two groups are small.

While Mr Cameron's pledge to cut net migration to zero by 2015, the Office for National Statistics said, the number of people leaving the country fell by 30,000 in the year ending December 2012, up from 153,000 in the year to September 2012.



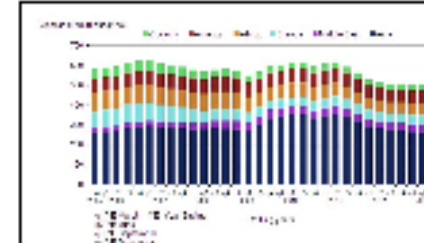
The UK has also seen the number of emigrants fall in the last 10 years, mainly because of a decline in the number of British citizens leaving the country to work abroad.

The figures also show a sharp increase in net migration from Spain and Greece, which rose to 10,000 in the year ending December 2012, up from 10,000 in the year to September 2012.

There has also been a sharp increase in net migration from Portugal, which rose to 10,000 in the year ending December 2012, up from 10,000 in the year to September 2012.

There has also been a sharp increase in net migration from Italy, which rose to 10,000 in the year ending December 2012, up from 10,000 in the year to September 2012.

There has also been a sharp increase in net migration from Greece, which rose to 10,000 in the year ending December 2012, up from 10,000 in the year to September 2012.



There has also been a sharp increase in net migration from Portugal, which rose to 10,000 in the year ending December 2012, up from 10,000 in the year to September 2012.

There has also been a sharp increase in net migration from Italy, which rose to 10,000 in the year ending December 2012, up from 10,000 in the year to September 2012.

There has also been a sharp increase in net migration from Greece, which rose to 10,000 in the year ending December 2012, up from 10,000 in the year to September 2012.

The Telegraph

Home News World Sport Finance Comment Blogs
Politics Obits Education Earth Science Defence

HOME NEWS UK NEWS IMMIGRATION

Government stalls on bid to cut net migr

The Government's bid to reduce net migration to the appears to have stalled after official data showed Brit the numbers at the end of last year.





Home Office

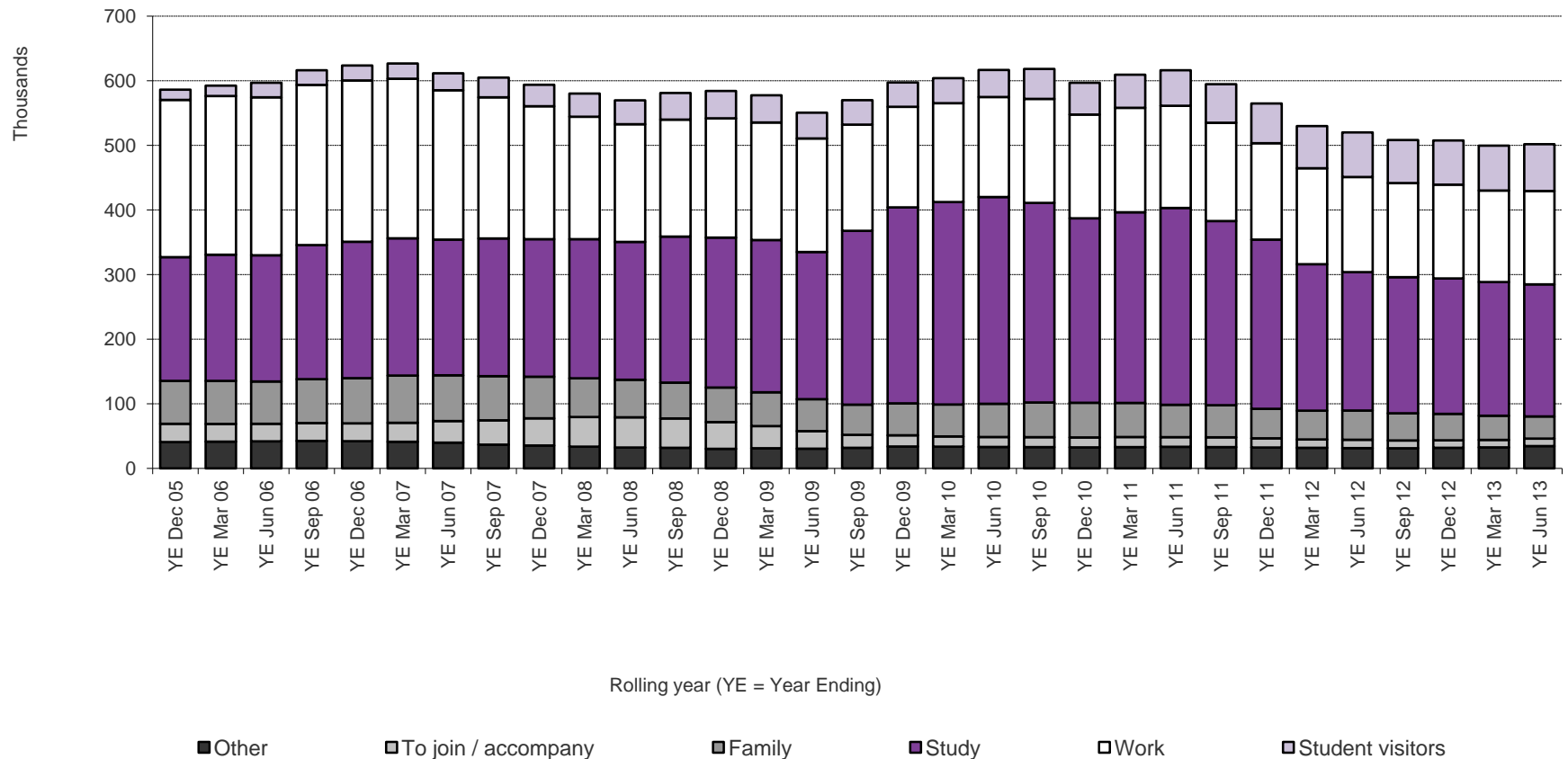


Immigration Statistics

to end June 2013

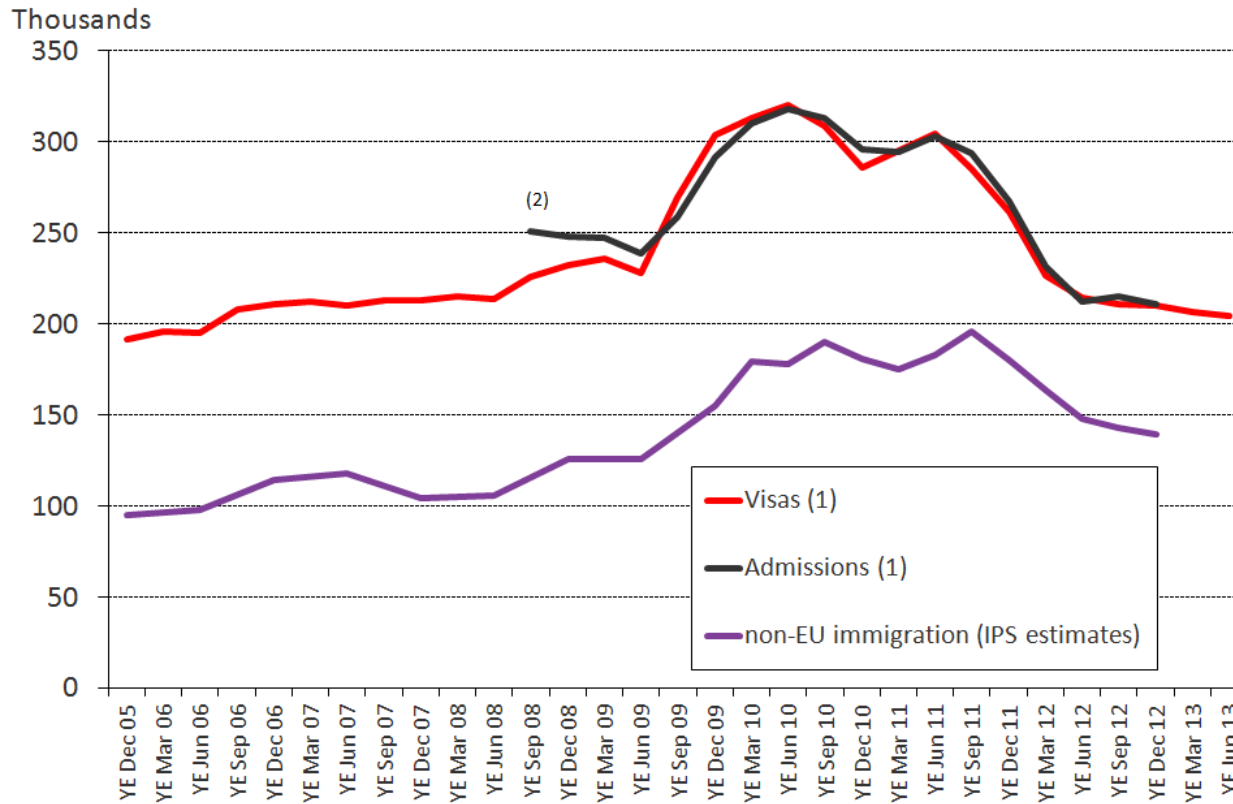
Our latest results

UK entry clearance visas issued (excluding visitor and transit visas)



- **501,840 visas issued** in the YE Jun 2013, incl. student visitors and excl. visitor and transit visas **4% lower** than the previous 12 months.

Trends in non-EU student immigration



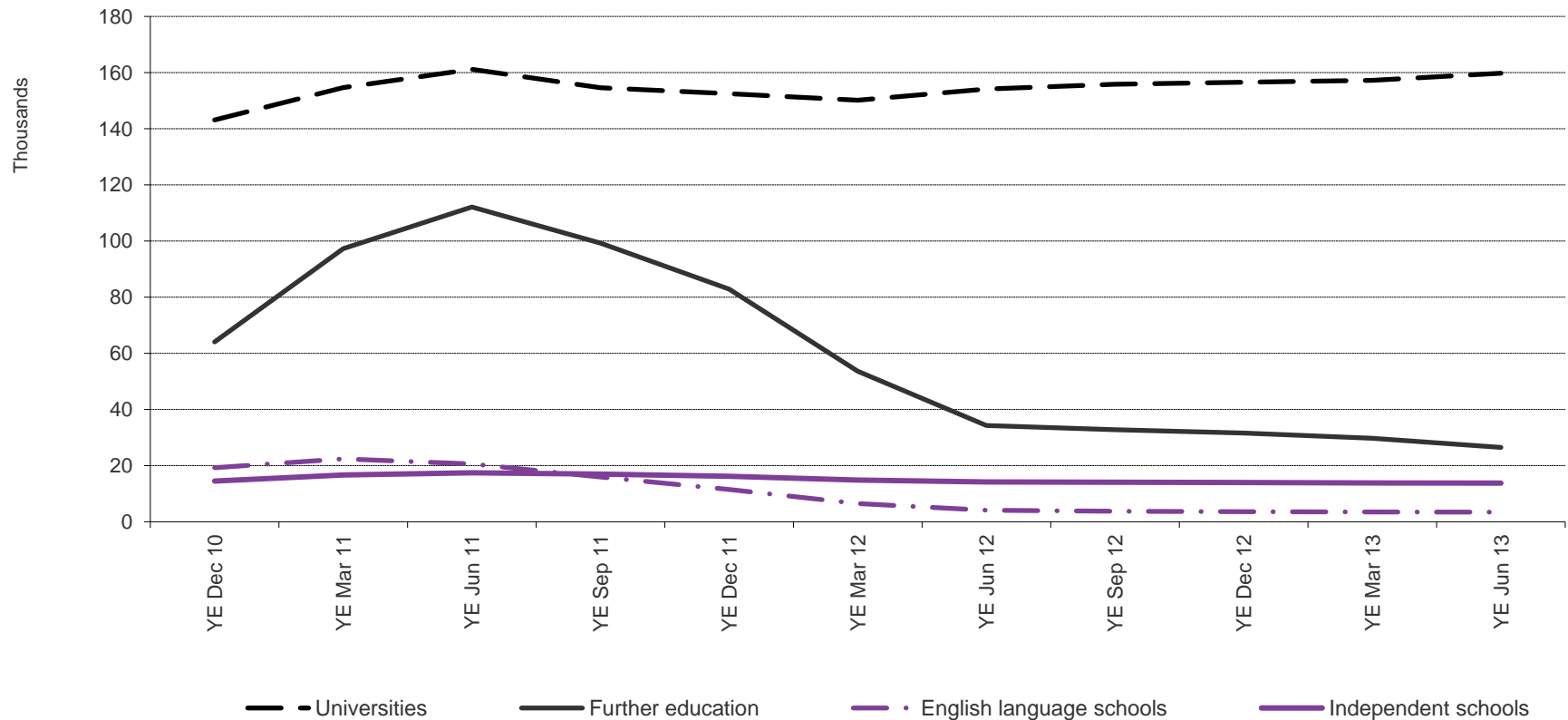
IPS estimates of migration are based on a sample survey and are therefore subject to sampling error

(1) Excludes student visitors for greater consistency with non-EU immigration estimates based on IPS

(2) For periods prior to the year ending September 2008, the count of student arrivals is not comparable with student visas issued. This is because student arrival numbers include short-term students that can be excluded from the visa time series.

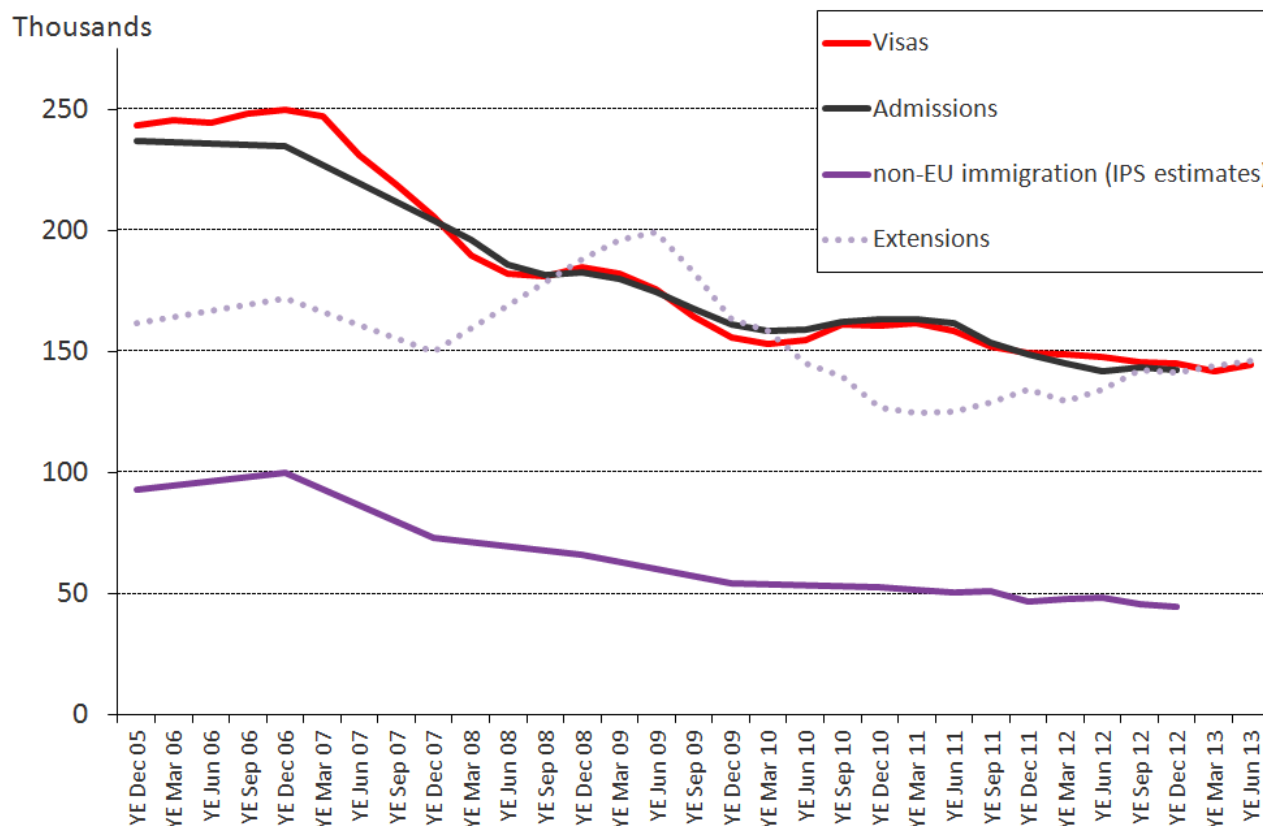


Sponsored student visa applications by education sector



- **206,871 sponsored visas applications** for visas in YE Jun 13, a **2% fall**
- This included an **increase of 4%** (up 5,519) in sponsored visa applications in the university sector and **falls of 25%** (down 8,902), **16%** (down 652) and **3%** (down 394) respectively in the further education sector, English language schools and independent schools.

Trends in work-related admissions, visas issued and (non-EU) immigration



IPS estimates of migration are based on a sample survey and are therefore subject to sampling error.

- In **YE Jun 2013**, there was a **2% fall** for work-related visas issued (144,554), and a **9% increase** in extensions of stay (145,855) compared with YE Jun 2012.
- In **2012** there were **4% fewer** work-related admissions (142,000) and **5% fewer** non-EU long term immigrants for work (44,000 estimated from the International Passenger Survey) compared with 2011

Other statistics of note

	Time period	Headline
Entry clearance visas (excludes visit and transit visas)	<u>501,840</u> YE Jun 2013	<ul style="list-style-type: none"> • 4% lower than YE Jun 2012 (520,073) but slightly up on the YE Mar 2013 (499,641)
Grants of extension	<u>291,953</u> YE Jun 2013	<ul style="list-style-type: none"> • 8% higher than YE Jun 2012 (270,817) • Follows 3 years of annual falls
Grants of settlement	<u>153,058</u> YE Jun 2013	<ul style="list-style-type: none"> • 9% higher than YE Jun 2012 (140,911) • Due to family & asylum-related grants
EU2 countries (Bulgaria and Romania)	SBS: <u>496</u> SAWS: <u>19,392</u> YE Jun 2013	<ul style="list-style-type: none"> • SBS fell by 22% • Approvals under SAWS fell by 5%
Granted British Citizenship	<u>204,541</u> YE Jun 2013	<ul style="list-style-type: none"> • 14% higher than YE Jun 2012 (179,697)

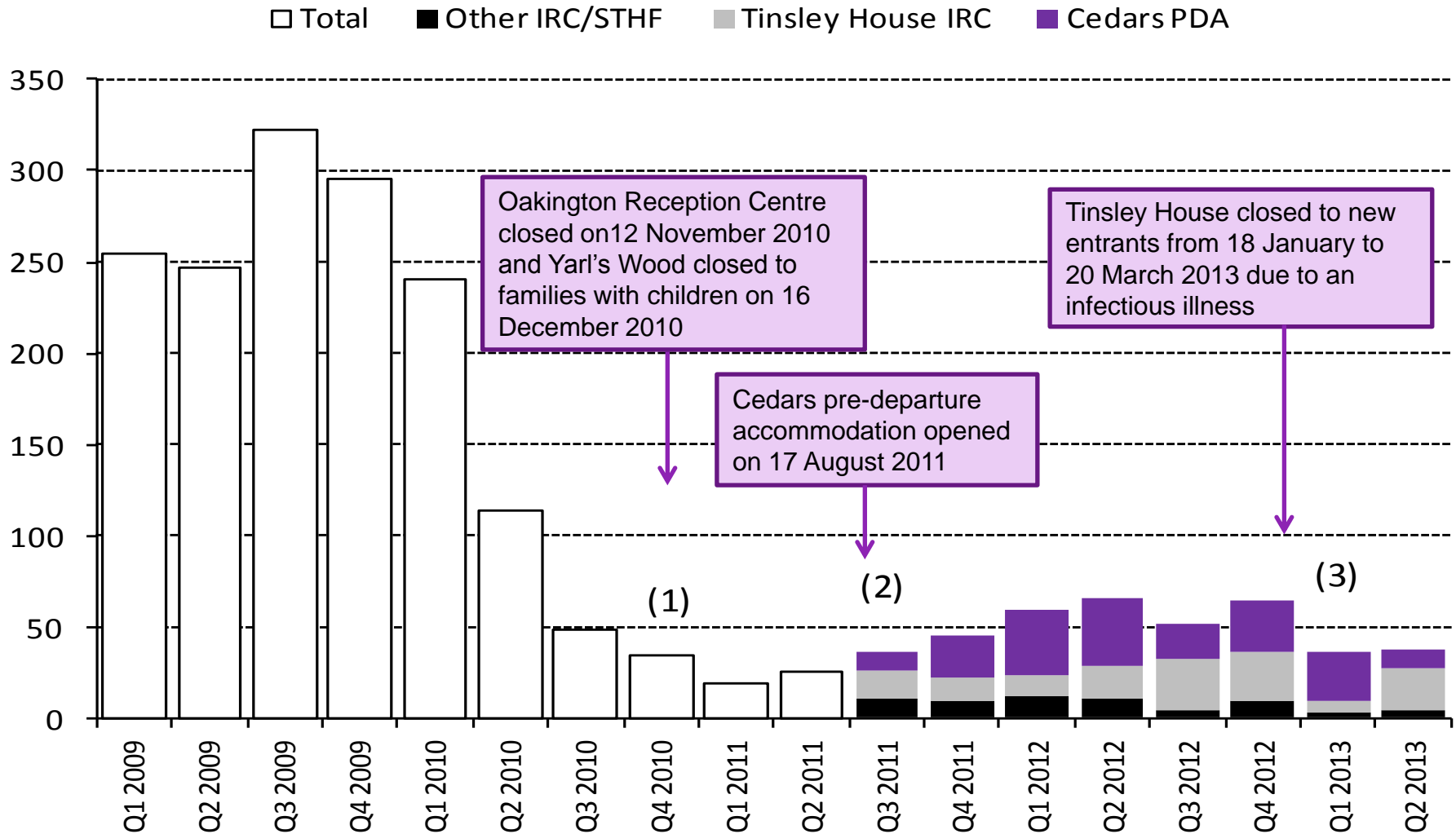


More statistics

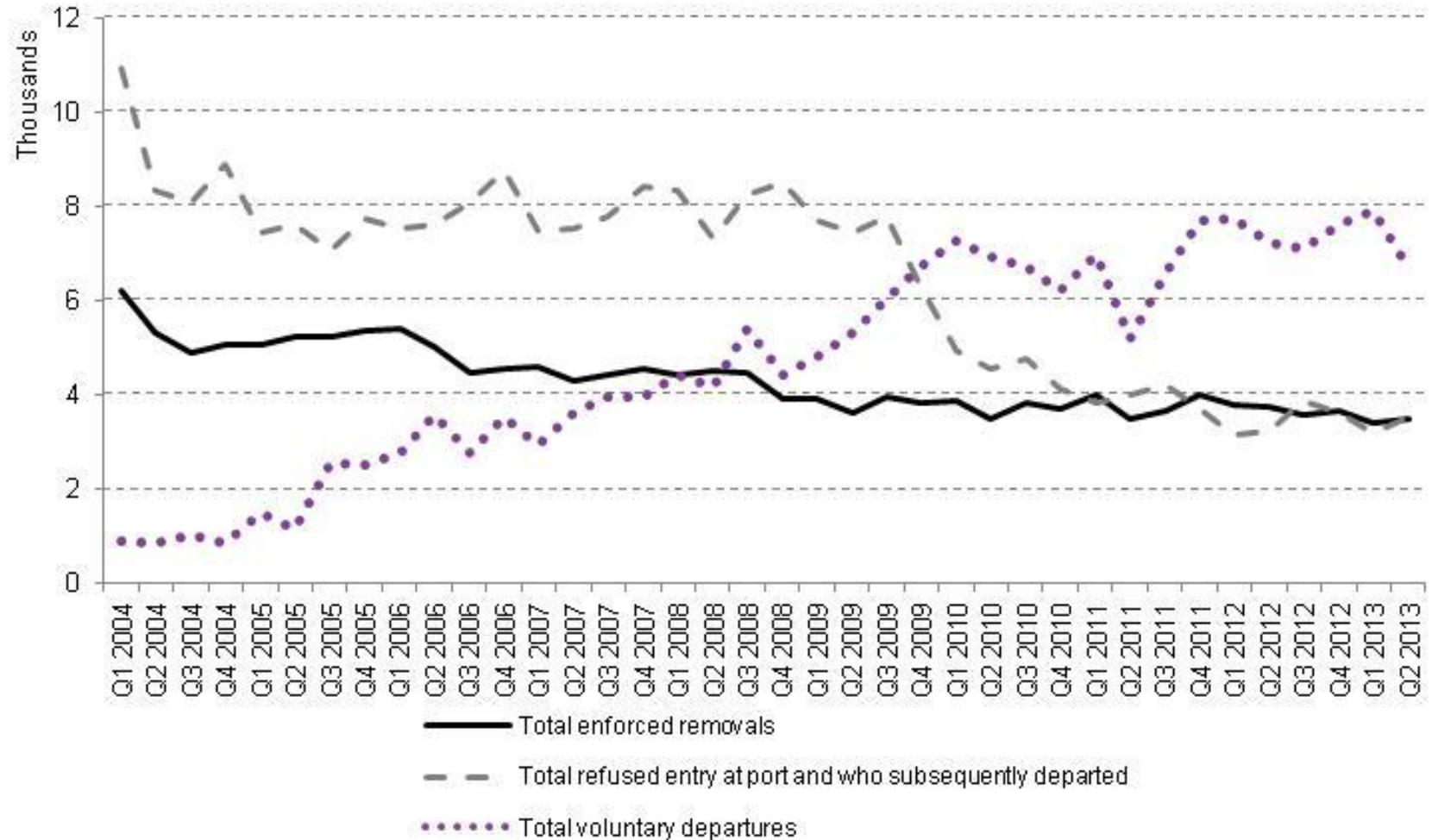
	Time period	Headline
Children entering detention (inc. pre-departure accommodation)	<u>38</u> Q2 2013	<ul style="list-style-type: none"> • Decrease from 66 in Q2 2012
Cases refused entry at port & subsequently removed	<u>14,134</u> YE Jun 2013	<ul style="list-style-type: none"> • 1% lower than YE Jun 12 (14,236)
Enforced removals	<u>14,062</u> YE Jun 2013	<ul style="list-style-type: none"> • 7% lower than YE Jun 12 (15,110)
Voluntary departures	<u>29,265</u> YE Jun 2013	<ul style="list-style-type: none"> • Little change from YE Jun 12 (29,234)
Asylum applications	<u>23,499</u> YE Jun 2013	<ul style="list-style-type: none"> • 18% increase on YE Jun 12 (19,996) with increases for Syria, Pakistan and Albania. • 14,589 main applicants pending decision



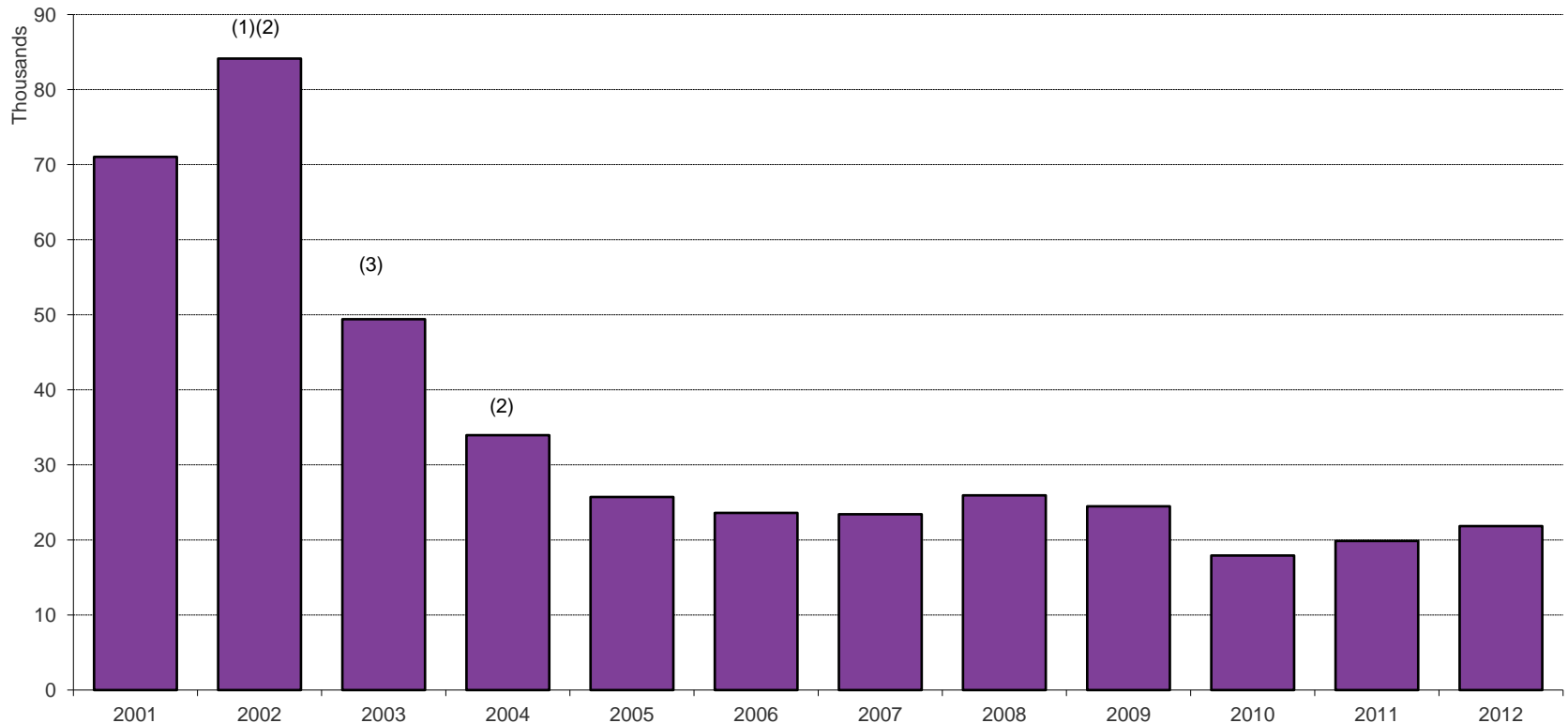
Number of children entering detention, solely under Immigration Act powers



Removals and voluntary departures, by quarter



Asylum applications, excluding dependants



(1) A process preventing certain nationalities from appealing a decision while in the country (non-suspensive appeals process) was introduced in 2002.

(2) Juxtaposed controls, full immigration controls operated by UK immigration officers, were opened in France and Belgium in 2002 and 2004.

(3) Fast-track facilities for asylum applications were introduced in 2003.

In YE June 2013, there were rises in applications from nationals of Syria, Pakistan and Albania.

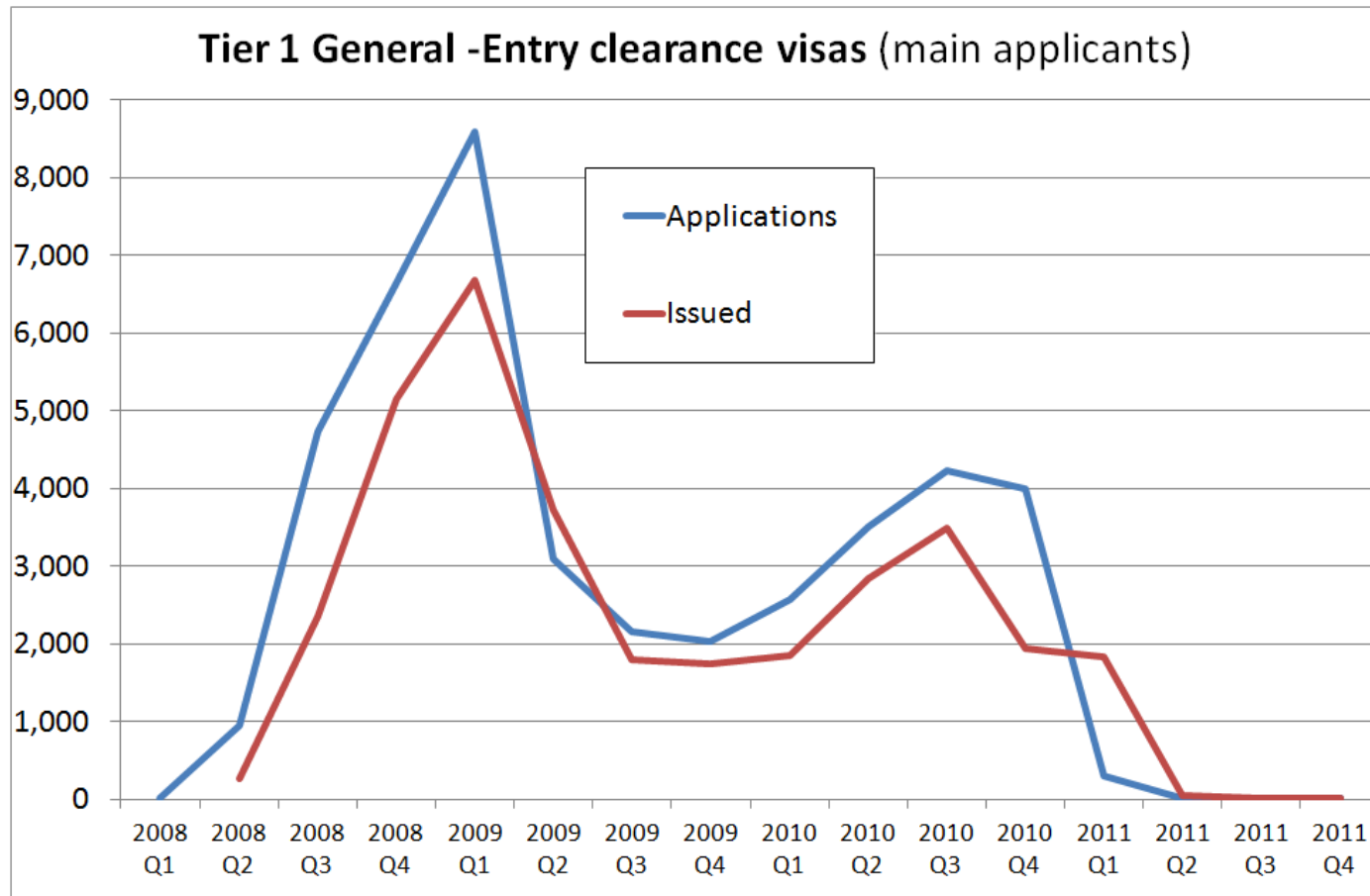


Home Office

***Some policy impacts-examples
illustrated by Home Office data***

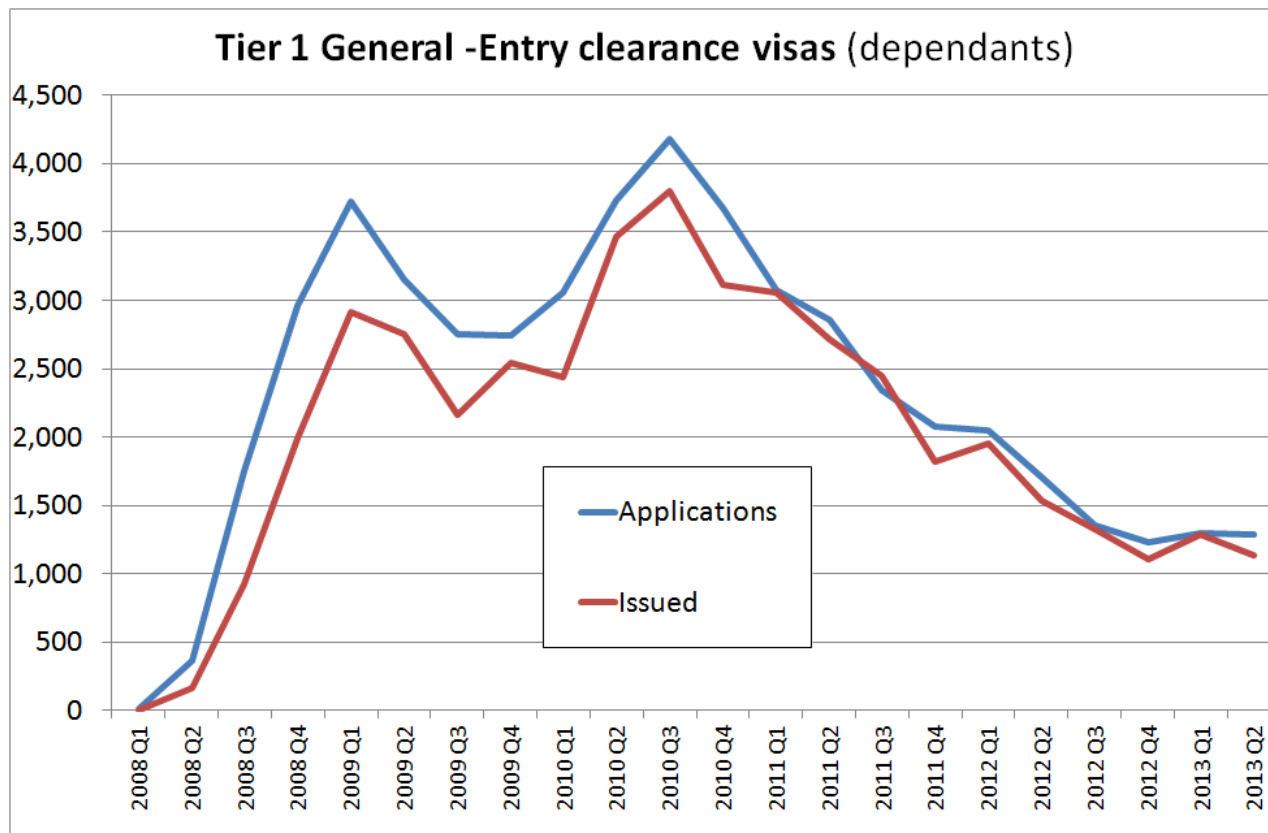
Example 1: closure of Tier 1 General to new applicants

From December 2010, Tier 1 General was closed to applicants from outside the UK – so no visas issued to main applicants from 2011 Q2 onwards



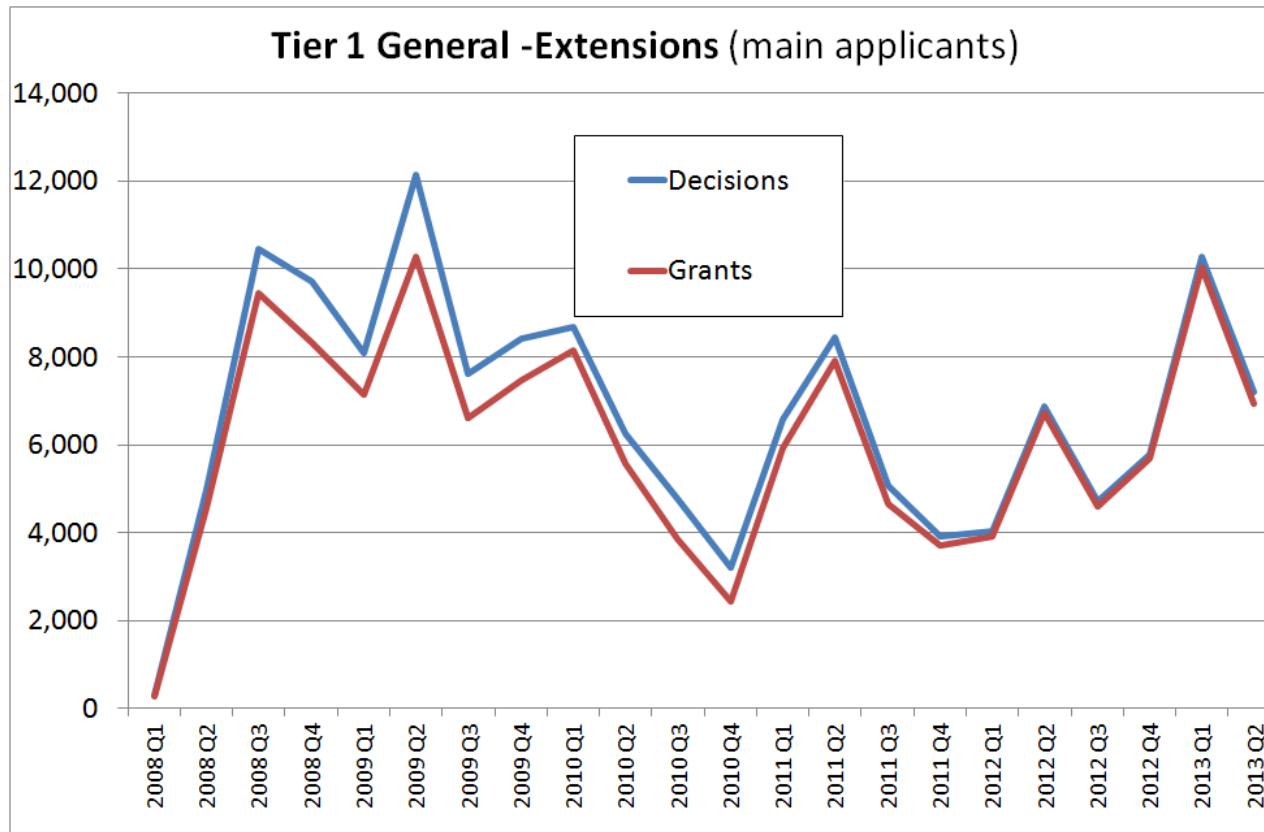
Example 1: closure of Tier 1 General to new applicants

From December 2010, Tier 1 General was closed to applicants from outside the UK – so dependants of existing applicants could still apply, though numbers have steadily fallen from 2011 Q1 onwards



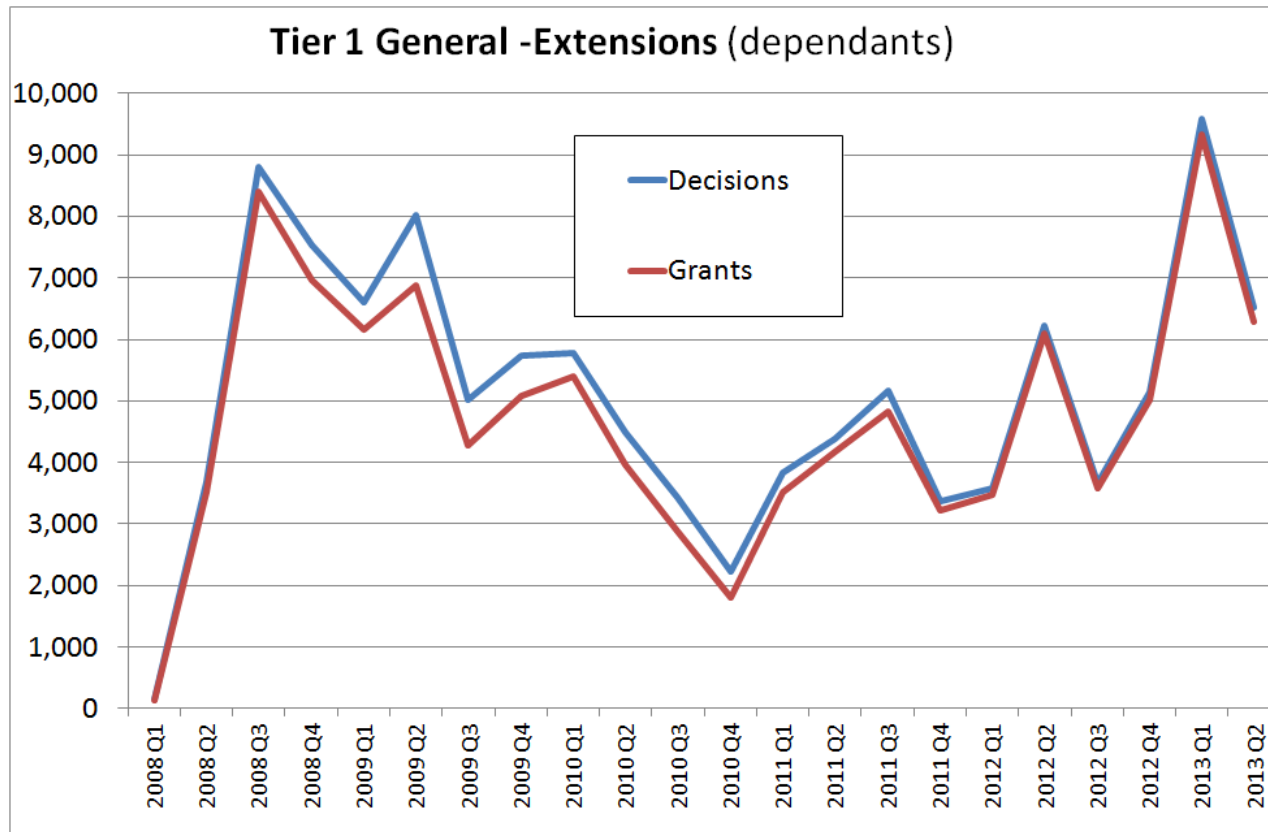
Example 1: closure of Tier 1 General to new applicants

and Tier 1 General was closed to migrants who were already in the UK, in most immigration categories, from April 2011– *however some existing people in Tier 1 General could still apply for extensions*



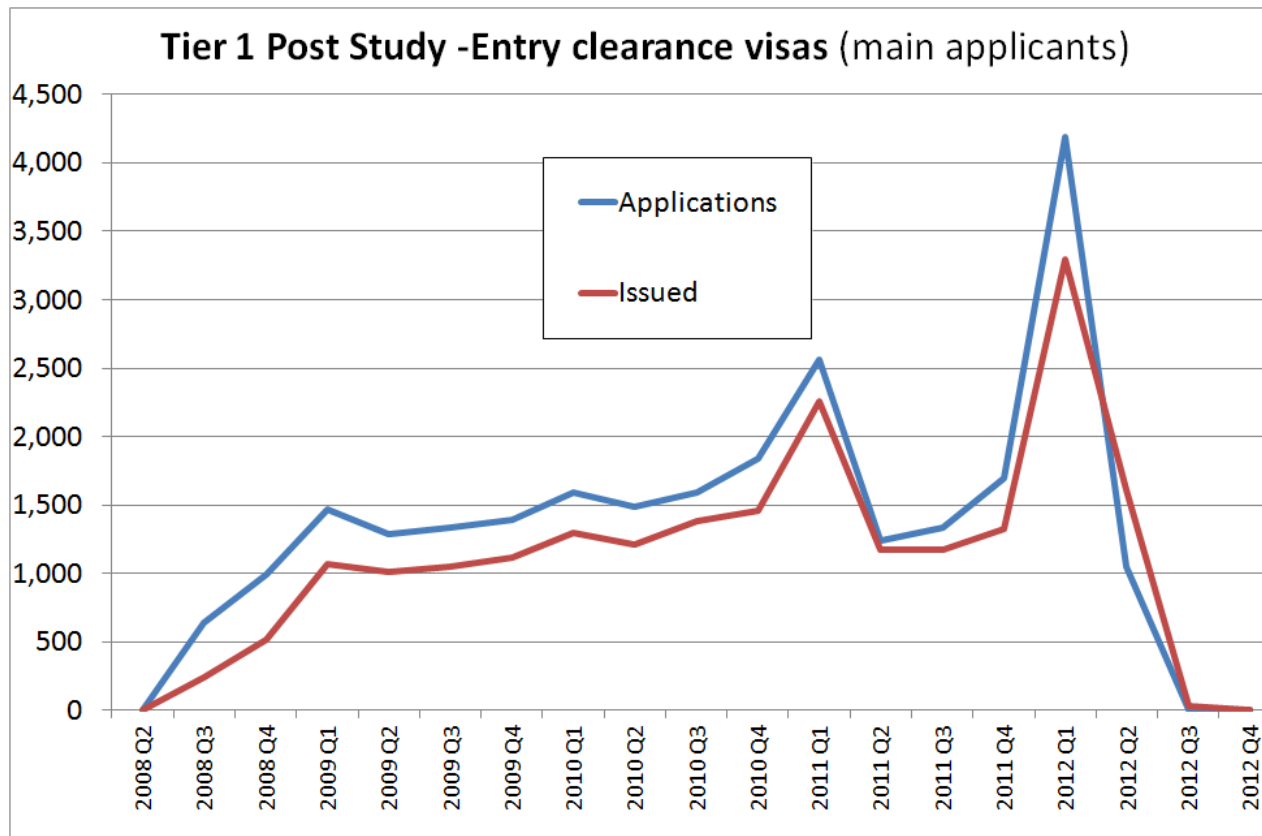
Example 1: closure of Tier 1 General to new applicants

and Tier 1 General was closed to migrants who were already in the UK, in most immigration categories, from April 2011– *however some existing people in Tier 1 General could still apply for extensions and so could their dependants*



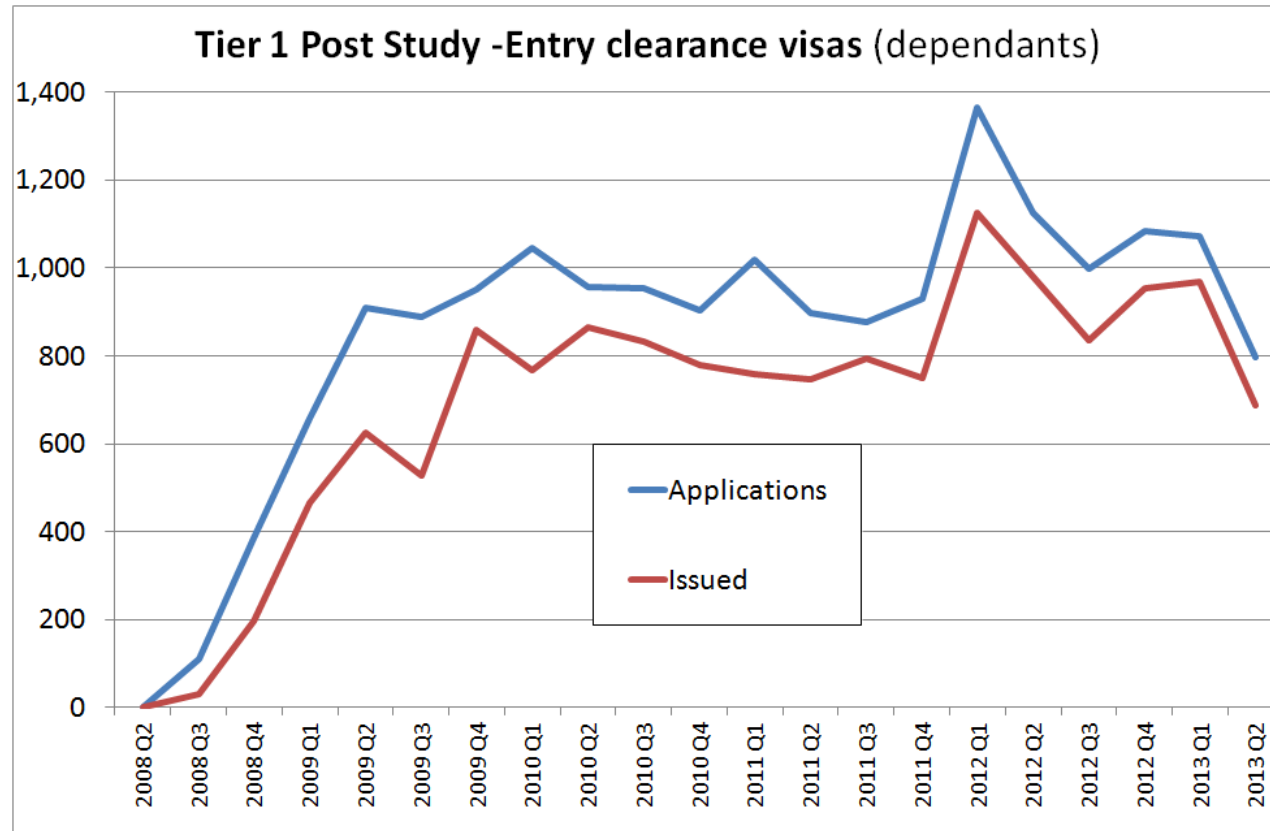
Example 2: closure of Tier 1 Post Study route to new applicants

Tier 1 Post-study was closed to new applicants from 6 April 2012 – so no visas issued to main applicants from 2012 Q3 onwards



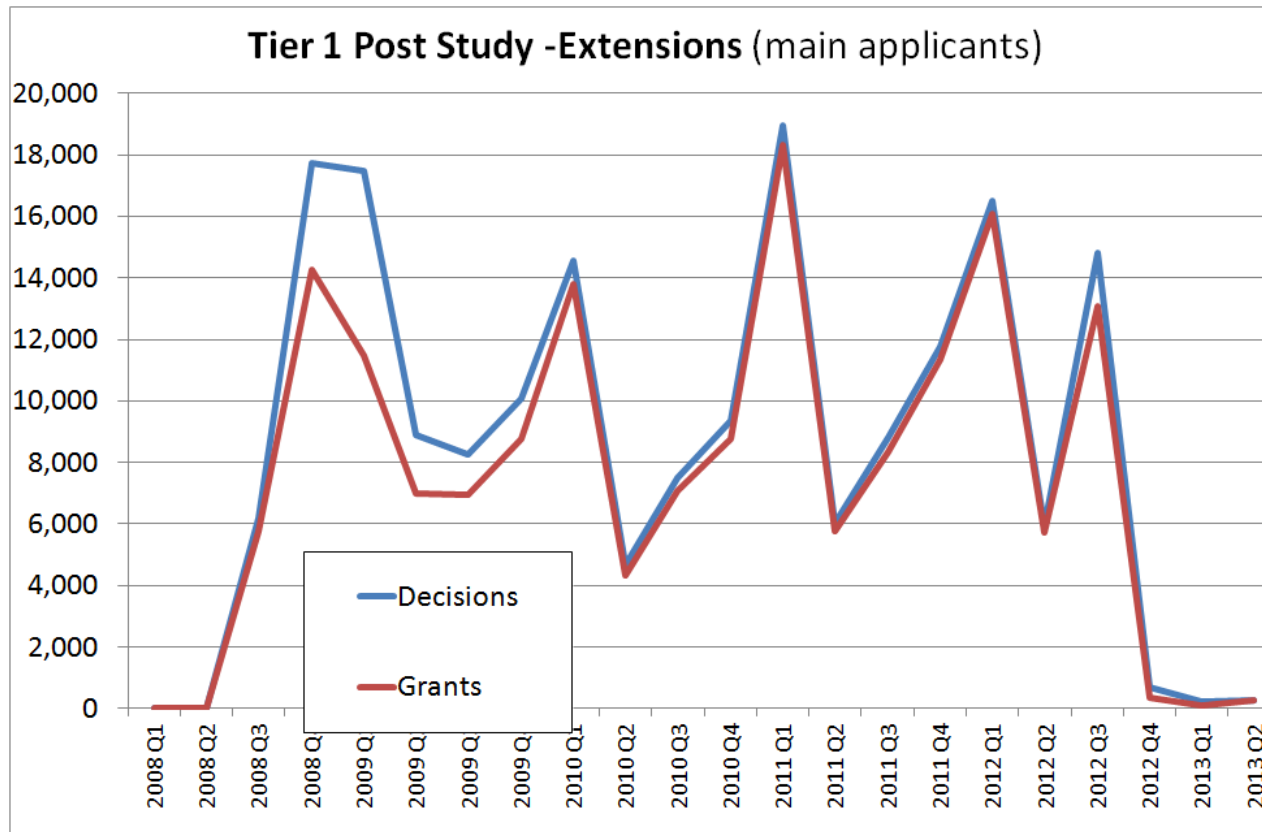
Example 2: closure of Tier 1 Post Study route to new applicants

Tier 1 Post-study was closed to new applicants from 6 April 2012 – so dependants of existing applicants could still apply, though numbers have steadily fallen from a peak in 2012 Q1



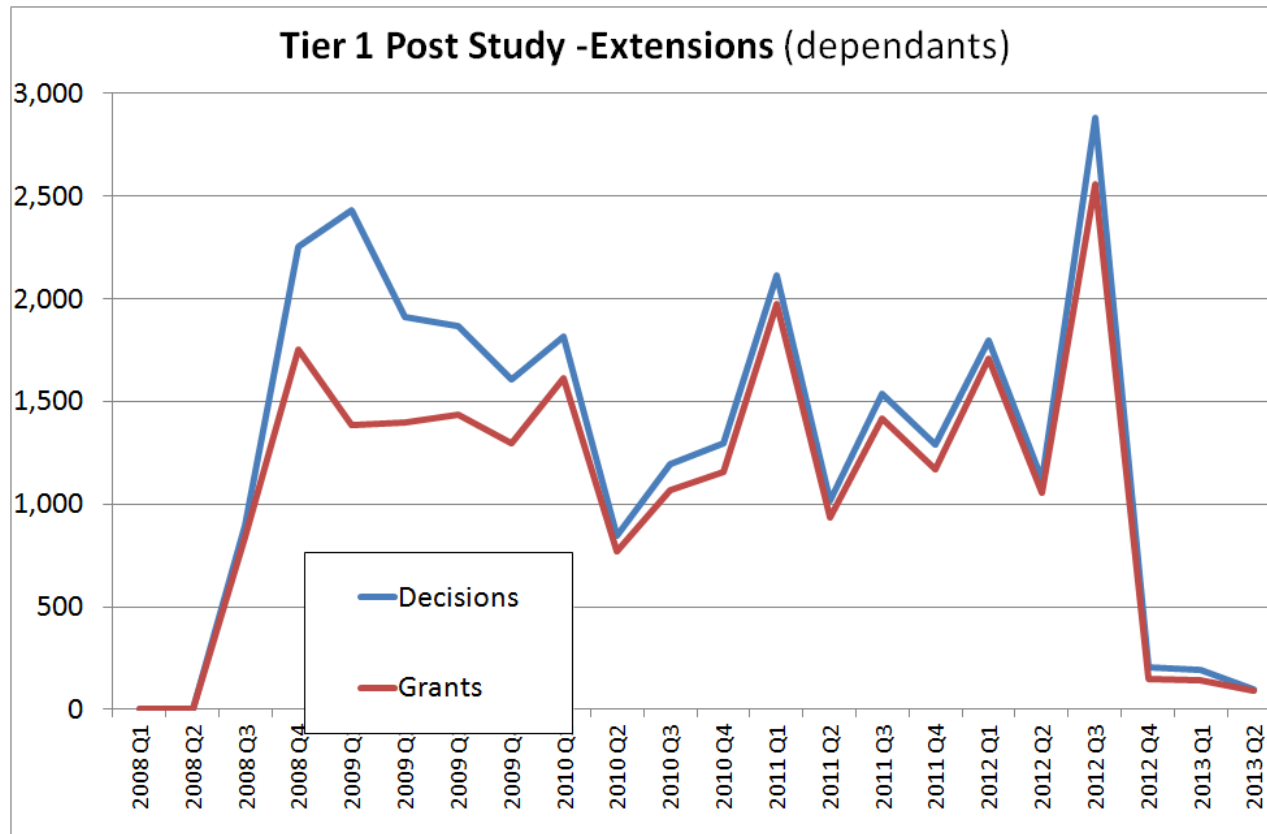
Example 2: closure of Tier 1 Post Study route to new applicants

Tier 1 Post-study was closed to new applicants from 6 April 2012 – since extensions in this route were closed to people previously in Tier 4/students, the numbers of extensions dropped sharply by 2012 Q4



Example 2: closure of Tier 1 Post Study route to new applicants

.....and the same was true for their dependants

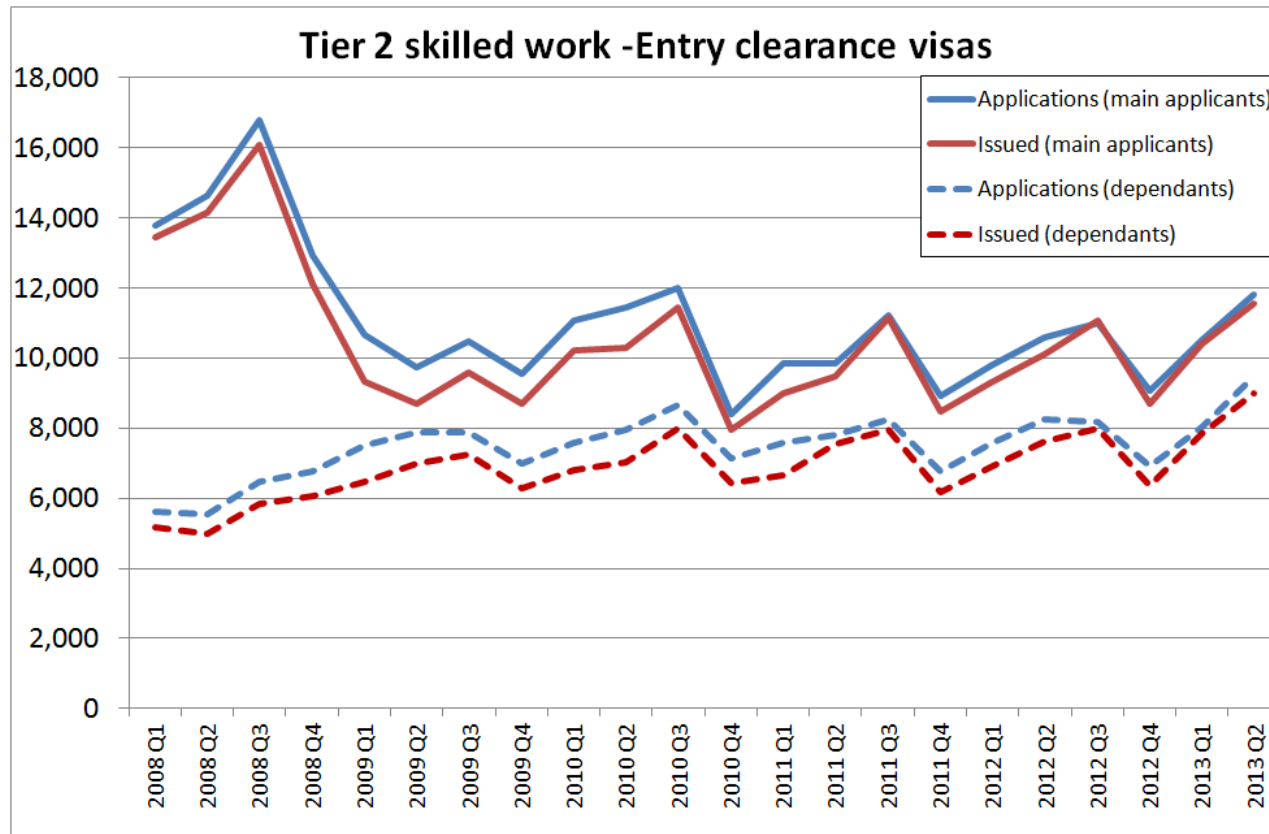


Example 3: switching into other routes? New data on extensions by previous immigration status

Q. So did the people previously in Tier 1 routes that got closed end up causing an increase in visas or extensions in Tier 2 (the sponsored skilled work route) instead?

Example 3: Tier 2 visas

A. Tier 2 visa applications and visas issued are a bit higher, but the detail shows this was largely accounted for by Tier 2 Intra Company Transfers



Example 3: New data on extensions by previous immigration status

Looking at new data on extensions by previous immigration status, most of the increase in extensions for Tier 2 was accounted for by people previously in Tier 2, though there were smaller contributions from Tier 1 Post Study and study

Grants of extensions for Tier 2 skilled work, by previous category

Previous category	2011	2012	Change
Tier 1 high value	2,521	5,408	+2,887
<i>of which: Post-study</i>	2,396	5,075	+2,679
Tier 2 skilled	9,779	19,266	+9,487
Study	1,730	2,614	+884
All categories	18,195	29,516	+11,321

Source: short article Extensions of stay by previous category

Example 4: Students – *how well do you know the data?*

Q. How many student visas (main applicants) were granted in year ending June 2006, year ending June 2011 and year ending June 2013?

Example 4: Students *visas granted* (*main applicants*)

	Year ending June 2006		Year ending June 2011		Year ending June 2013
Answer A	130,487		201,273		250,893
Answer B	187,883		271,219		187,466
Answer C	300,273		360,123		202,767
Answer D	80,296		210,492		120,200

Example 4: Students

Q. What were the changes in sponsored student visas applications (main applicants) in each sector from year ending June 2011 to year ending June 2013?

Example 4: Students *sponsored visa applications (main applicants)*

	Year ending June 2011	Year ending June 2013	
Total	321,419	206,871	-36%
<i>of which</i>			
University	161,160	159,734	-1%
Further education	113,612	26,477	-77%
English language school	20,568	3,423	-83%
Independent school	17,397	13,778	-21%
Other	8,682	3,459	-60%

Example 4: Students – *how well do you know the data?*

Q. How many in country extensions for study (main applicants) were granted in 2006, 2011 and 2012?

Example 4: Study extensions granted in-country (main applicants)

	2006	2010	Year ending June 2013
Answer A	225,213	160,197	140,137
Answer B	75,003	125,656	141,343
Answer C	120,432	119,112	118,868
Answer D	134,241	119,928	88,132

Example 4: Students – *switching into other routes?*

Q. How many former students were granted extensions in 2012 and of those how many went into the work route?

Example 4: Students – *switching into other routes?*

A. *There were 115,106 extensions granted in 2012 to people who were previously students. Of these, 70,962 (62%) allowed individuals to continue to study, a further 38,505 (33%) were for work, largely in the Post-study category (34,895), and 4,312 were family-related*

Source: short article '*Extensions of stay by previous category*'



Home Office

New data

New data etc developed & published from August 2012

- Visa applications and decisions by category quarterly
up to date quarterly info on grant/refusal rates for different routes by nationality
- Breakdown of study visas by education sector
- Short term visas issued data giving figures for under 12 months duration
contributing to wider ONS bulletin on short term migration
- Removals and voluntary departures breakdown
more useful breakdown splitting enforced removals and voluntary departures
- New, more useful, definition of Unaccompanied Asylum Seeking Children
relates to status during the asylum claim rather than a previous status

Further developments

- Policy timeline
- Articles: FNOs entering/leaving detention, extensions by previous immigration status,
- Short term visas data (part of ONS bulletin)
- Update: Outcomes following 2011 consultation on changes to immigration-related Home Office statistical outputs
<https://www.gov.uk/government/consultations/consultation-on-changes-to-immigration-related-home-office-statistical-outputs>

New data etc that we are considering

Future

- Sponsored visa applications for the university sector, by nationality – planned for Nov 2013
- Children in detention data split by whether in family-orientated or adult accommodation (*Tinsley House split into Family Unit and non-Family Unit; already available within monthly release*)– planned for Nov 2013
- Cumulative length of detention
- Visas issued by duration –under consideration
- Family asylum applications –under consideration
- Further improvements to presentation of data *e.g. use of maps*
- Other data developments/requests from users *e.g. arising from the 2011 consultation on changes Home Office immigration statistics outputs*

Future challenges & plans

- **Adding more insight and interpretation, presenting HO data in the wider picture** *of UK and EU(etc) international migration flows and labour markets*
- **Getting the most out of ONS sources**
- **Develop new data** e.g. visas and sponsorship system, and Migrant Journey approach/tracking cases through the system
- **Longer term- new data & IT systems** – e.g. *e-Borders*
- **Increasing demands & fewer resources**

“Home Office should keep users better informed about the likely nature of its statistical outputs from the e-Borders system and the timescale for their release “
(UKSA monitoring review International Passenger Survey)

Latest position

- Reminder (from last year’s MSUF conference) E-borders development will support and complement the measurement of migration via the IPS but cannot replace it as it does not measure reason for migration and migrants are a tiny proportion of inflows and outflows
- There are no specific statistical e-borders-based outputs from HO Statistics under development as yet; new statistical outputs are some years away

“Home Office should keep users better informed about the likely nature of its statistical outputs from the e-Borders system and the timescale for their release “
(UKSA monitoring review International Passenger Survey)

Future plans

- Our initial priority is to help ONS make use of e-borders data to improve the ONS estimates; large extract supplied
- There may be scope to turn off other data collections, in particular landing cards, once e-borders has good enough coverage, but before any decisions on outputs are made, we will of course consult users in line with the Code of Practice requirements

Conclusions

- **Progress made**

- Can see evidence of policy & operational impacts in the HO figures (especially if you look at the detail)
- Reviews and working with ONS bringing together multiple sources has produced a richer picture
- Processes validated by confirmation of National Statistics designation by UKSA
- Public debate now more about policy issues and what the statistics say than whether the statistics are reliable, compared with a decade ago

- **But as ever, there's always more to do....**

- Improve level of feedback from users
- New data & IT systems



Contacts & future events

Contacts

Chris.Kershaw@homeoffice.gsi.gov.uk

David.Matz@homeoffice.gsi.gov.uk (managed migration)

Jenny.Bradley@homeoffice.gsi.gov.uk (asylum/enforcement)

MigrationStatsEnquiries@homeoffice.gsi.gov.uk

Migration Statistics JISCMail list

<https://www.jiscmail.ac.uk/cgi-bin/webadmin?A0=MIGRATION-STATS>

Next MSUF conference 16 September 2014