

# The use of migration statistics in Luton

Eddie Holmes

Research & Information Officer

Luton Borough Council

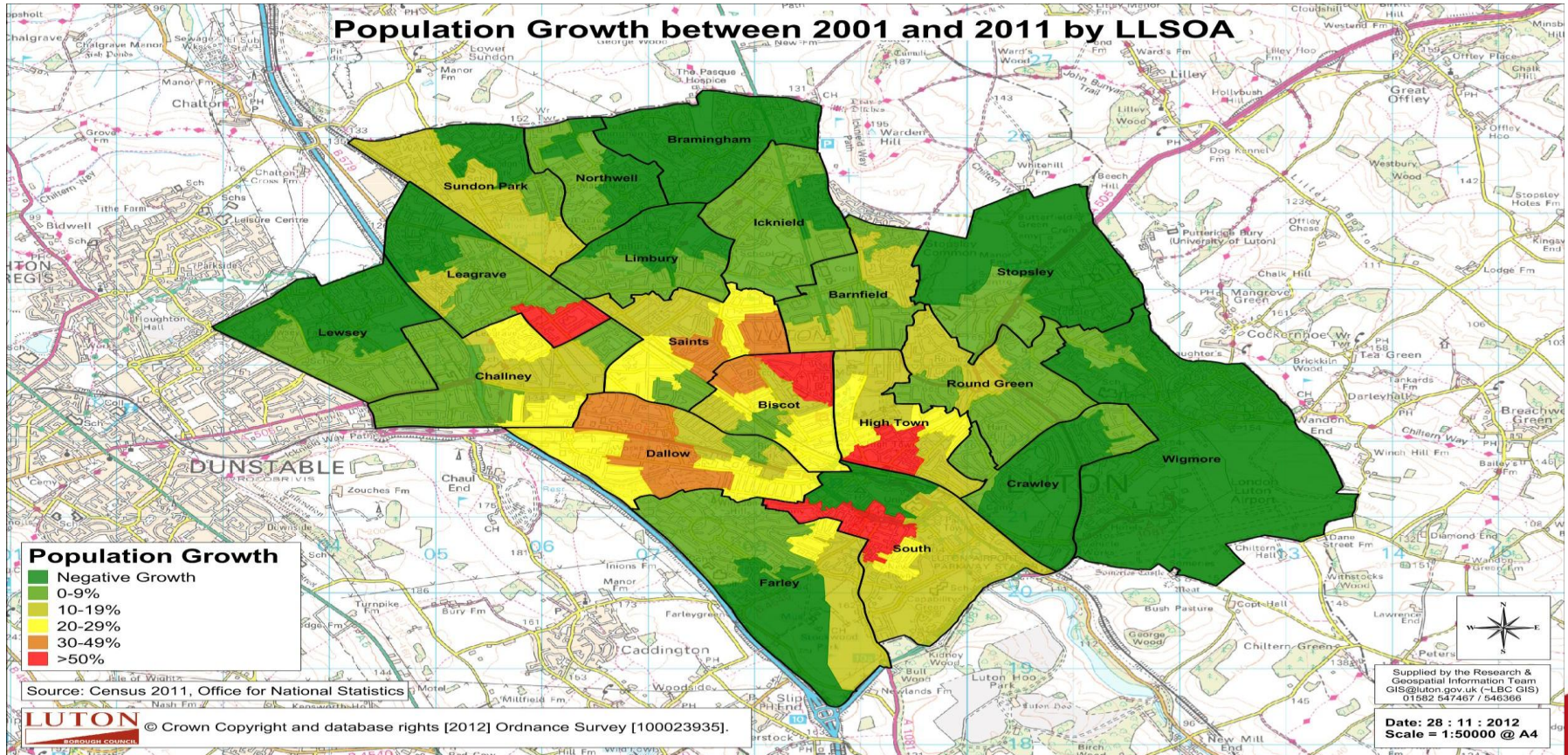
# Luton Background

- Census, Luton's population 202,300, 10% growth since 2001, 2013 MYE 208,000
- Strong population growth in already densely populated areas with high levels of deprivation
- High population turn-over, estimated 70% of population either not born or moved to Luton since 2001 Census
- High BME Population, 55% BME at 2011 Census
- Large South Asian population

# Luton Background

- High international migration – 'super-diverse' over 100 languages and dialects spoken
- New East European population, over 10,000 at last Census, evidence this is not short term migration
- 75% BME pupils in Luton schools, 50% of children without English as first language
- Evidence of long term settlement of new migrants in Luton, approx 1,000 Polish children in Luton's schools

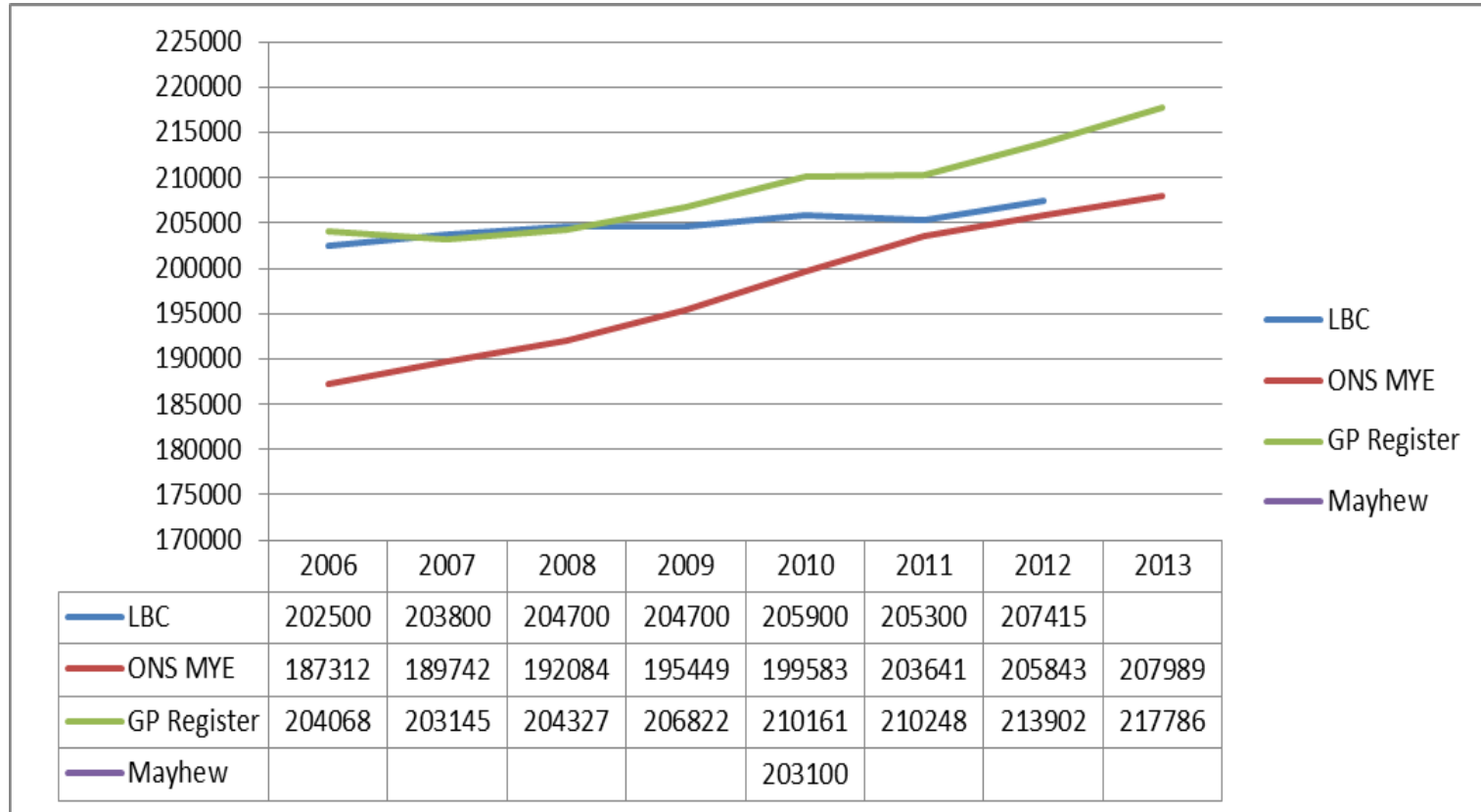
# Luton Population Growth 2001-2011



## Migration Statistics & Population Estimation 2001-2011

- Only 85% response rate in 2001 Census
- High migration from new EU countries from 2004
- Official estimates lagged behind the local evidence in Luton
- Workers Registration scheme and NINO registrations showing high numbers of Poles and other East-Central Europeans in Luton
- Local services experiencing high demand

# Luton population estimate comparison



# Luton Population Estimate 2006-2011

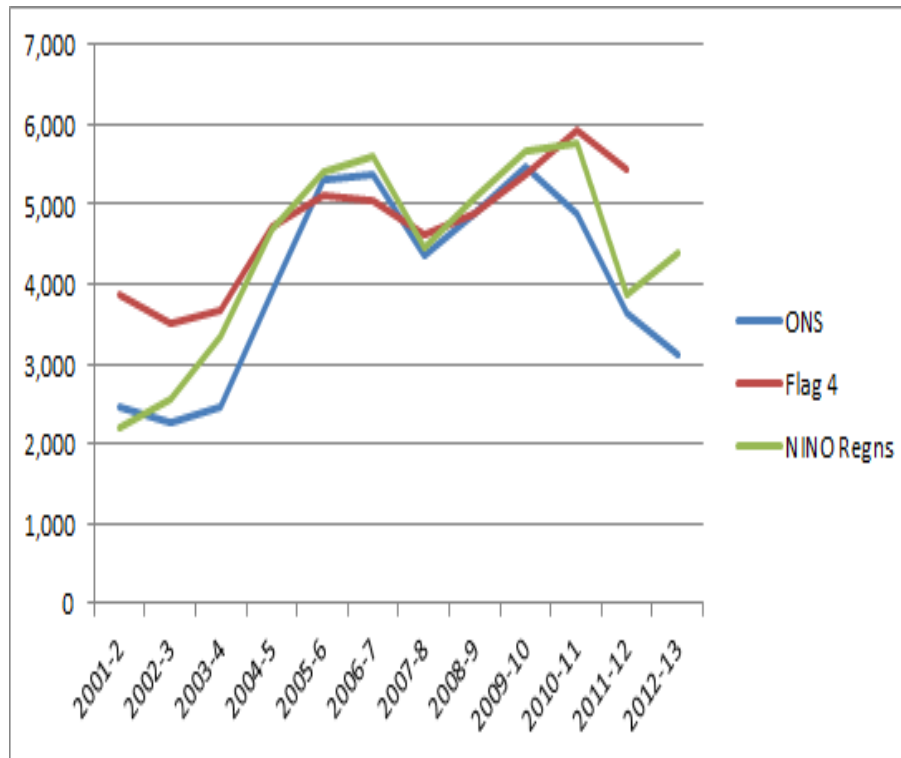
- Takes an average of ONS, GP register, child benefit, school census
- Adds in Workers Registration data to get an age distribution of new migrants
- NINO data also included in average calculation
- These data are a point in time estimate
- Possibly some over-estimation in LBC figure from 2006-2009 because of potential double counting
- Independent Mayhew Harper Associates study supported the overall analysis

# Post 2011 Population Estimation

- Census 2011 figure much closer to LBC
- Research into what is happening to migration post 2011 Census
- Migration out of the town fell in recession but rose again
- Other indicators showing a different path
- Difficulty in measuring emigration



# Luton international migration indicators



	ONS	Flag 4	NINO Regns
2001-2	2,476	3,882	2201
2002-3	2,251	3,507	2567
2003-4	2,450	3,671	3351
2004-5	3,910	4,724	4700
2005-6	5,308	5,109	5400
2006-7	5,385	5,060	5606
2007-8	4,370	4,627	4446
2008-9	4,896	4,883	5085
2009-10	5,465	5,379	5674
2010-11	4,888	5,925	5781
2011-12	3,626	5,425	3875
2012-13	3,107		4379

NINO Registrations in calendar years

Source: Office for National Statistics, DWP

## NINO registrations in Luton from overseas 2002-2014 Q1

	2002	2003	2004	2005	2006	2007	2008	2009	2010	2011	2012	2013	2014 Q1	Total
Poland	10	43	1,154	2,116	2,657	2,615	1,710	1,012	931	1,016	977	1,539	284	16,064
Pakistan	505	393	427	489	518	646	546	627	941	1,160	475	360	78	7,165
India	142	185	139	227	209	271	381	1,367	1,439	1,419	803	485	76	7,143
Bangladesh	232	244	157	170	212	235	220	309	494	260	158	147	35	2,873
Nigeria	60	101	101	166	154	209	205	200	198	201	186	171	59	2,011
Rep of Lithuania	6	9	60	156	266	189	72	134	280	259	180	142	23	1,776
Zimbabwe	180	358	176	106	98	78	87	185	141	103	42	26	12	1,592
China Peoples Rep	102	188	116	97	81	80	74	88	116	74	49	34	12	1,111
Slovak Rep	0	9	48	111	203	168	139	74	67	49	39	56	0	963
Romania	0	0	0	8	0	24	41	51	59	101	79	90	351	804
Others & Unknown	964	1,037	973	1,054	1,002	1,091	971	1,038	1,008	1,139	887	1,329	275	12,768
<b>Total</b>	<b>2,201</b>	<b>2,567</b>	<b>3,351</b>	<b>4,700</b>	<b>5,400</b>	<b>5,606</b>	<b>4,446</b>	<b>5,085</b>	<b>5,674</b>	<b>5,781</b>	<b>3,875</b>	<b>4,379</b>	<b>1,205</b>	<b>54,270</b>

Source: DWP

# International Migration Data

- Migration has fallen according to official data and natural change is driving population increase
- NINO registrations have also fallen but are have increased slightly since 2013
- Flag 4 registrations have remained at a constant level.
- GP Register shows an increase in registrations of people in their 30s, possible evidence of long term settlement in town
- Evidence of Romanians in Luton since regulation change
- Implications for population & housing projections

# Population & housing projections – what migration data to use

- Population projections – lower migration 15% population increase over next 20 years and largely driven by natural change
- High migration population projections scenario 20% population increase over next 20 years
- Converts into likely household need of between 12,000 and 20,000 households over next 20 years depending on level of migration used in model (CLG HH Rates)
- Luton has an estimated capacity for 6,000 households over this time period
- Brings in duty to cooperate with neighbouring authorities

# Policy Implications from the use of migration statistics

- Evidence of official under-estimation of the population of Luton
- Used as part of evidence base for funding lobbying
- Long term planning for services – school places, healthcare, community cohesion
- Use of school census helps schools to plan for English language tuition
- House building
- Any questions?

# Contact

- Eddie Holmes
- [Edward.holmes@luton.gov.uk](mailto:Edward.holmes@luton.gov.uk)
- [Eddie.holmes@lutontradedservices.com](mailto:Eddie.holmes@lutontradedservices.com)
- Tel: 01582 54 7093