



Migration Statistics in Devolved Administrations

Esta Clark (National Records of Scotland)

Cara Feeney (Northern Ireland Statistics
and Research Agency)

Tony Whiffen (Welsh Government)

Stephen Drinkwater (Wales Institute of
Social & Economic Research)



What is a devolved administration

- 3 devolution Acts:
 - the Scotland Act 1998;
 - the Northern Ireland Act 1998;
 - and the Government of Wales Act 1998 (which was later effectively superseded by the Government of Wales Act 2006).
- These acts established the 3 devolved legislatures, which were given some power previously held at Westminster.
- Section 66 of the Statistics Registration Act 2007



Examples of devolved statistics

- Population
- Components of population statistics
- E.g. separate Census legislation, Beyond 2011 programmes etc.

Scotland Migration

Esta Clark, 17 September 2013

Scotland's population hits highest ever level

BY SPICER
SCOTLAND'S population has reached a historic high of 5.3 million, according to the 2012 census, the first time the population has exceeded 5 million since the 1950s.

But figures show increase is slowing and emigration also on the rise

Scotland's population has reached a historic high of 5.3 million, according to the 2012 census, the first time the population has exceeded 5 million since the 1950s.

But figures show increase is slowing and emigration also on the rise

CROSSWORDS AND GAMES 2-6, TELEVISION & RADIO 44-45, LETTERS 24-25, WEATHER 47, ANNOUNCEMENTS 48

10 NEWS

Call for answers as Scottish population hits record high

Economists warn growth must be higher despite rise of 13,700 people

MARK MCLEOD FOR THE SCOTSMAN

SCOTLAND'S population has reached a record high, which the Scottish Government has hailed as a success. But economists warn that the country's growth must be higher despite the rise of 13,700 people.

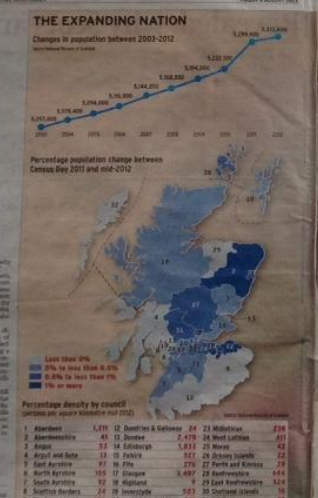


The 2012 Scottish census has called for the Government to find out why the population has risen and discover what the welfare will be.

Facilities: How the numbers break down
The 2012 census revealed that Scotland's population has reached a historic high of 5.3 million. The numbers show that the population has increased by 13,700 people since 2007. The census also revealed that the population is becoming more diverse, with a growing number of people from other countries living in Scotland.

Scotland's population grew by 35 people every day last year

SCOTLAND'S population grew by 35 people every day last year, according to the 2012 census. The population reached a historic high of 5.3 million. The census also revealed that the population is becoming more diverse, with a growing number of people from other countries living in Scotland.



Biggest baby boom in UK since 1972, statistics show
The number of babies born in the UK has risen to its highest level since 1972, according to the 2012 census. The statistics show that the population is becoming more diverse, with a growing number of people from other countries living in Scotland.

You've heard of the Glasgow Boys.

Now discover the Edinburgh Boys.

COLOURS GALLERY
41 Dundas Street, Edinburgh EH3 6LP

www.coloursgallery.co.uk
www.edinburghgallery.co.uk
Tel: 0203 887 4309 • Mon - Sat 10am - 8.30pm
Lunch 10th September

Edinburgh International Festival

Metamorphosis
ADAPTED FROM FRANK KAFKA
World Premieres

Contemporary Legend Theatre
Monday 16 October 7.30pm
Tuesday 17 October 7.30pm

Book now!
ed.co.uk/metamorphosis
0131 473 2000

Edinburgh International Festival

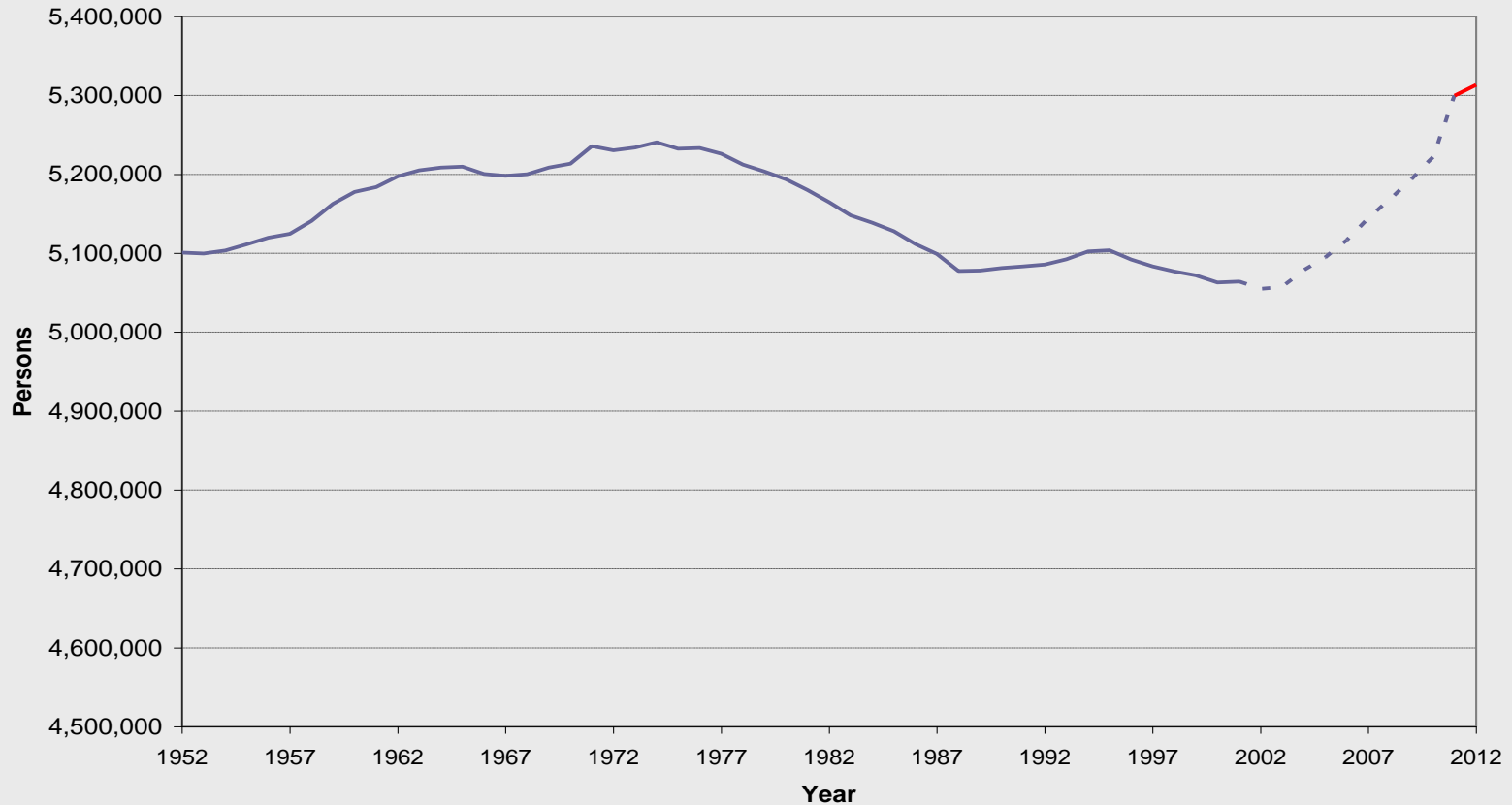
Metamorphosis
ADAPTED FROM FRANK KAFKA
World Premieres

Contemporary Legend Theatre
Monday 16 October 7.30pm
Tuesday 17 October 7.30pm

Book now!
ed.co.uk/metamorphosis
0131 473 2000

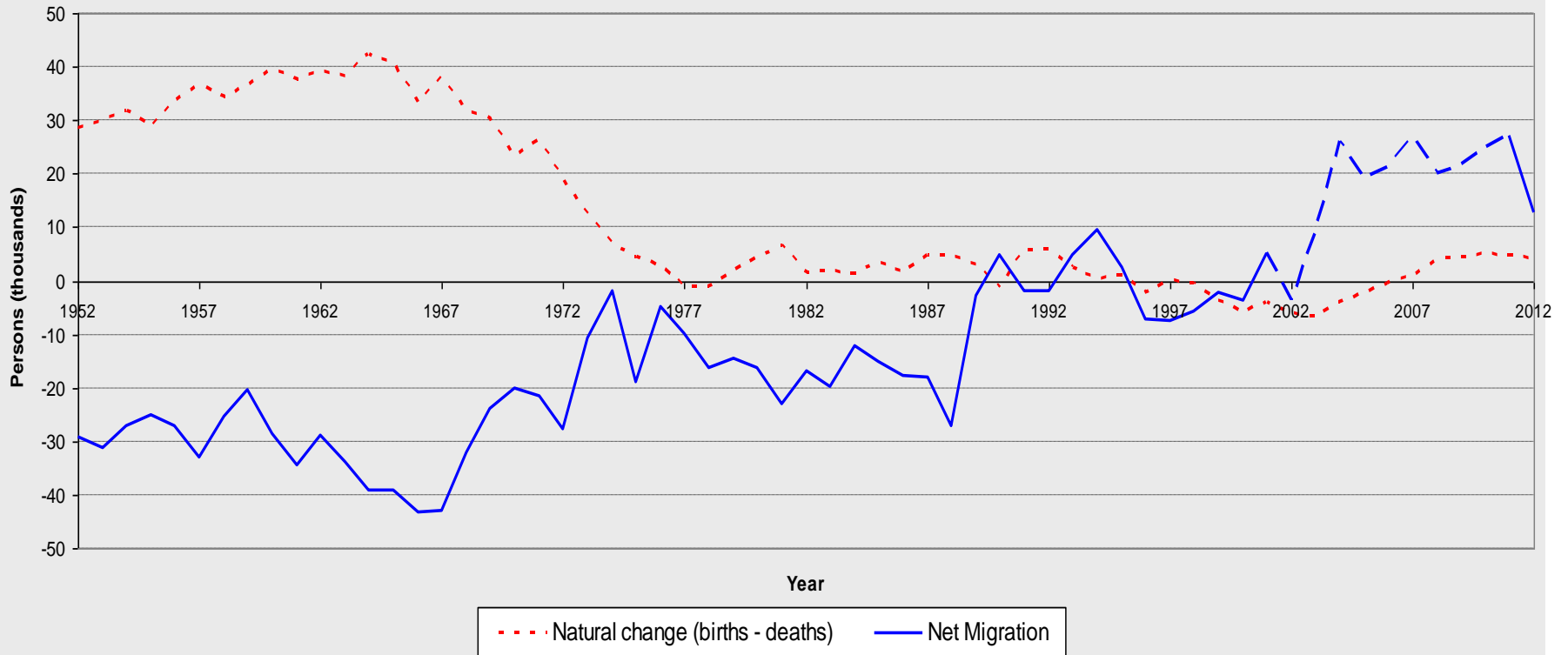
Estimated population of Scotland on 30 June 2012 was **5,313,600**

Increase of 18,200 since Census Day, highest ever recorded



Population Change 1952-2012

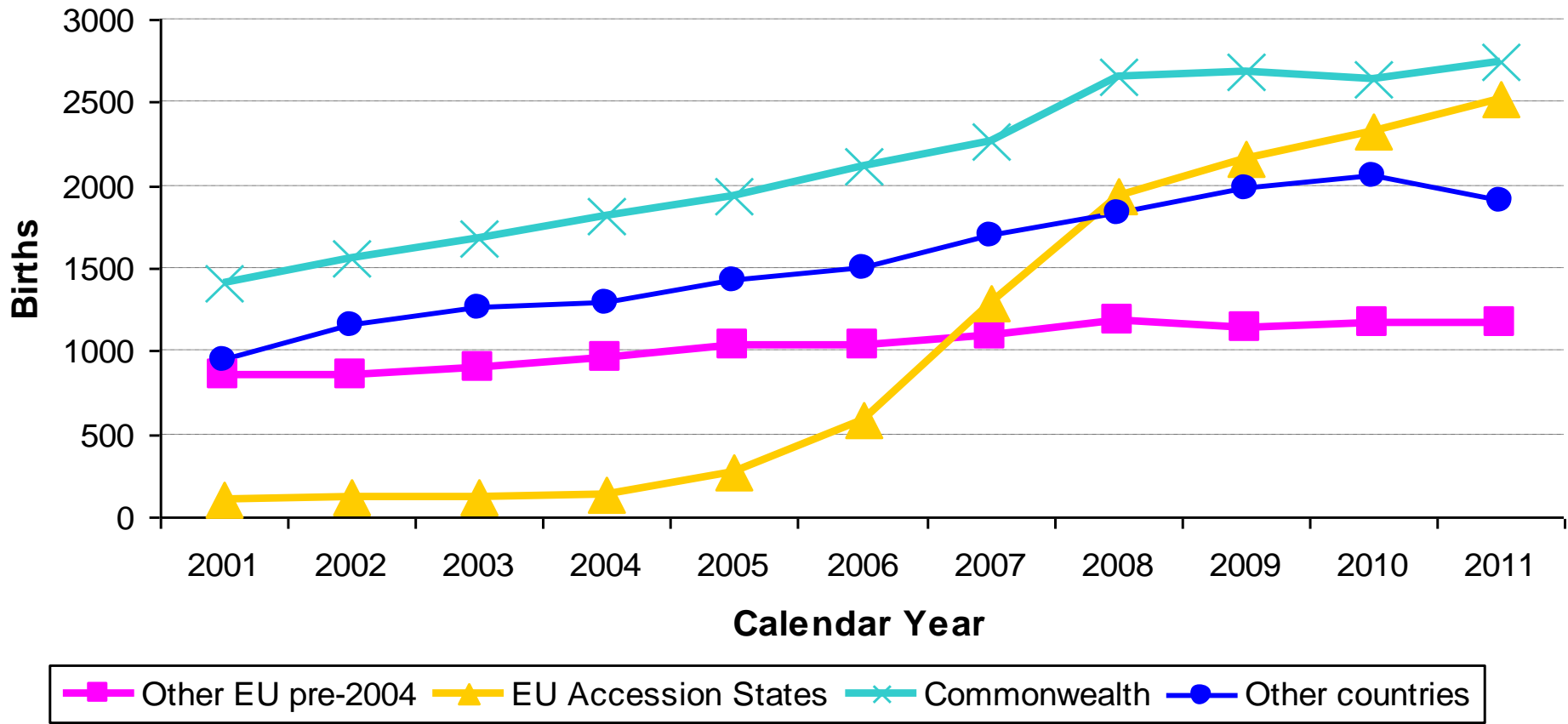
Natural change and net migration, 1952-2012



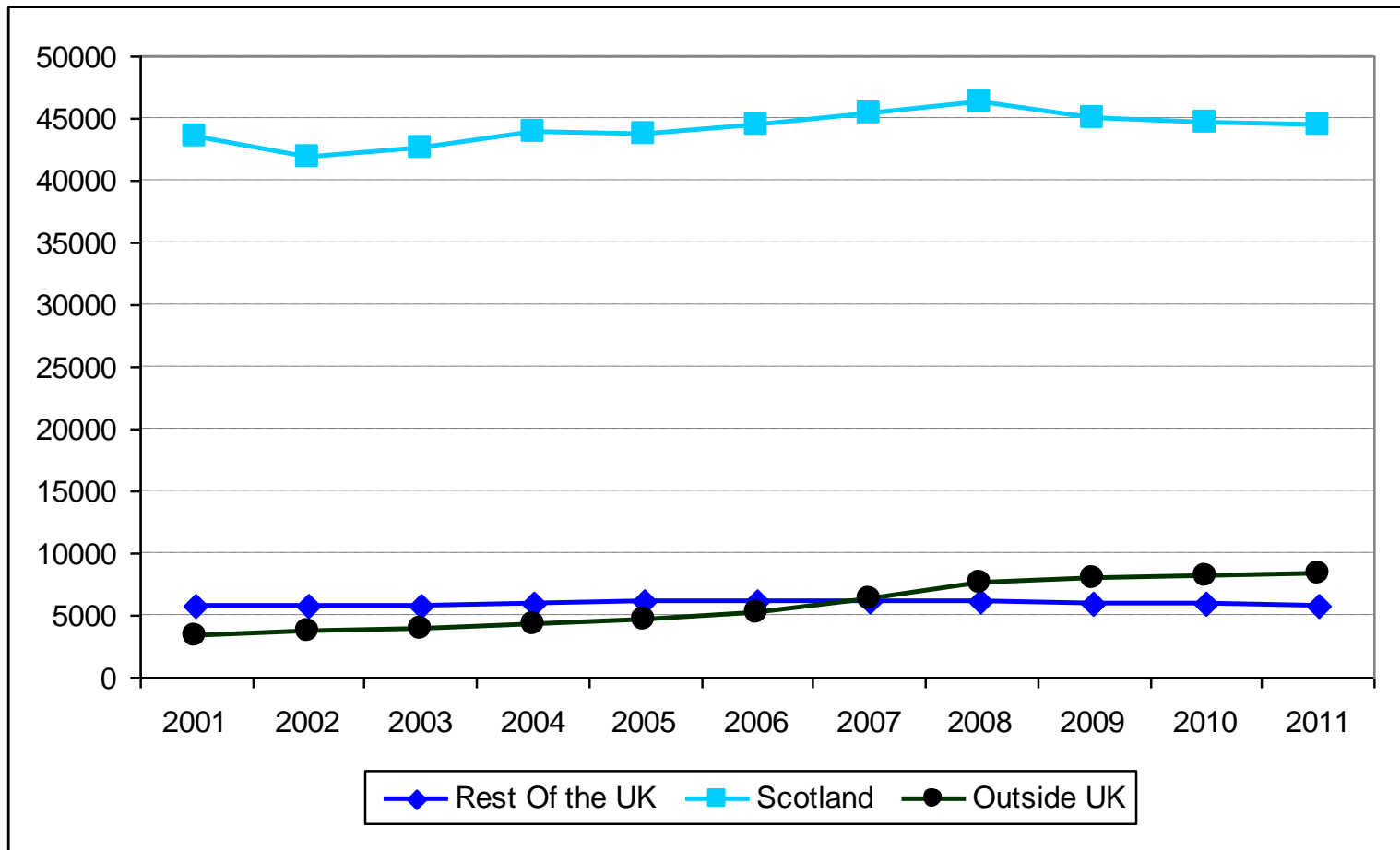
Since Census Day: Natural change: + 6,045 Net migration: + 15,186

Mid-2011 to Mid-2012: Natural change: + 4,223 Net migration: + 12,738

Births in Scotland to mothers born outside UK, by mother's country of birth, 2001 to 2011

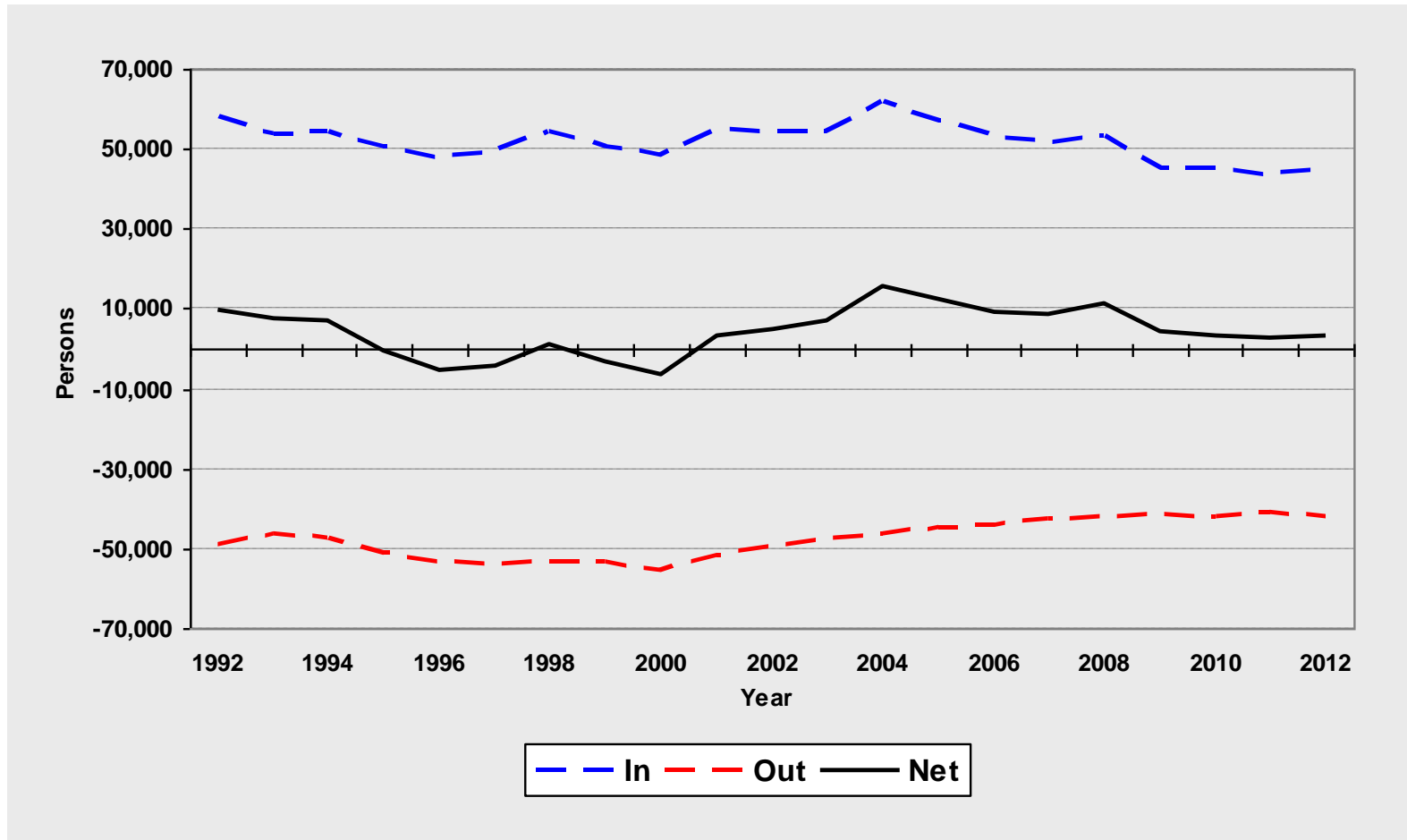


Births in Scotland, by mother's country of birth, 2001 to 2011

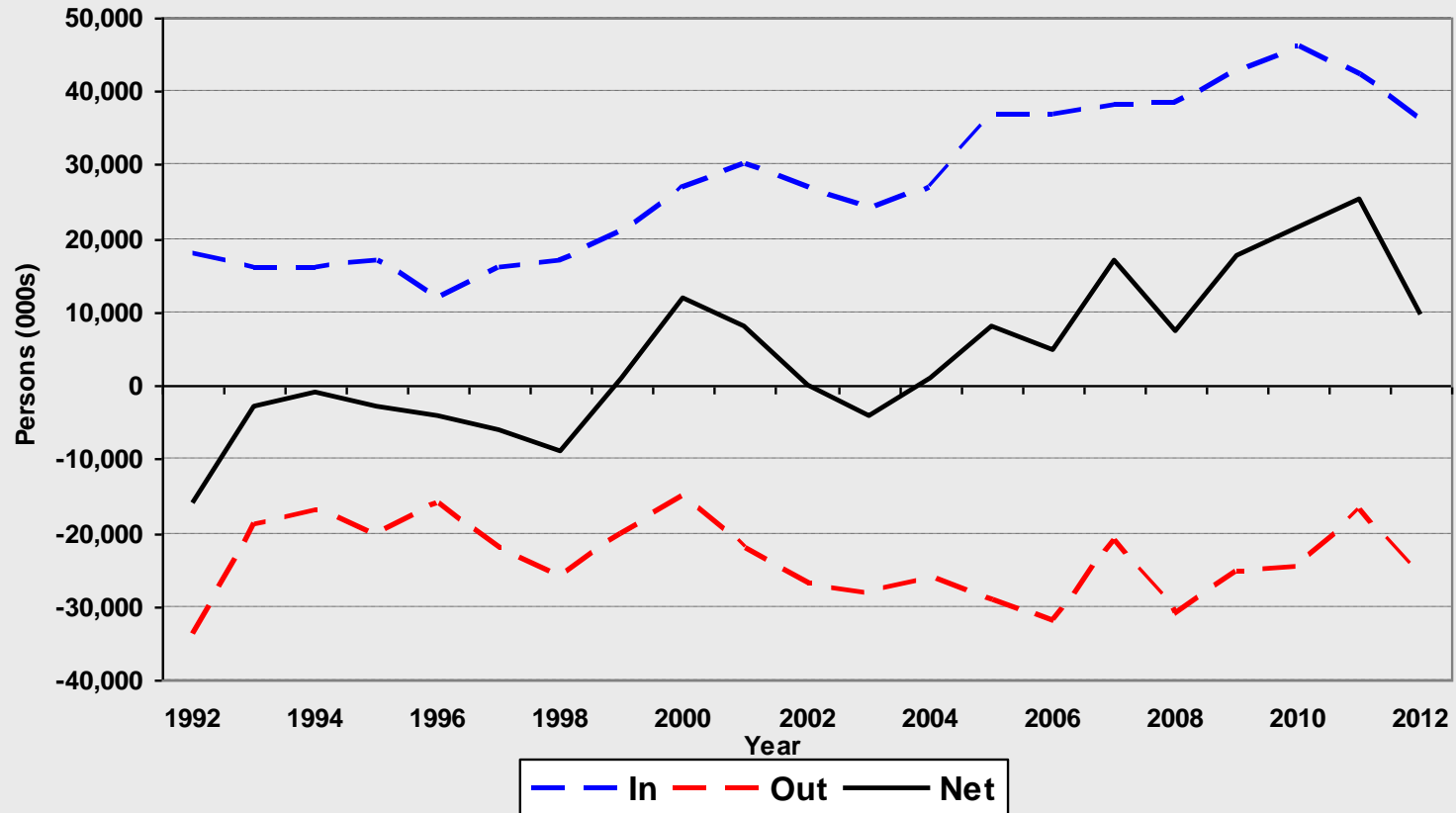


Rest of UK migration +3,000

– little change, 45,100 in-migrants, 42,100 out-migrants, 3,000 net gain from rest of UK

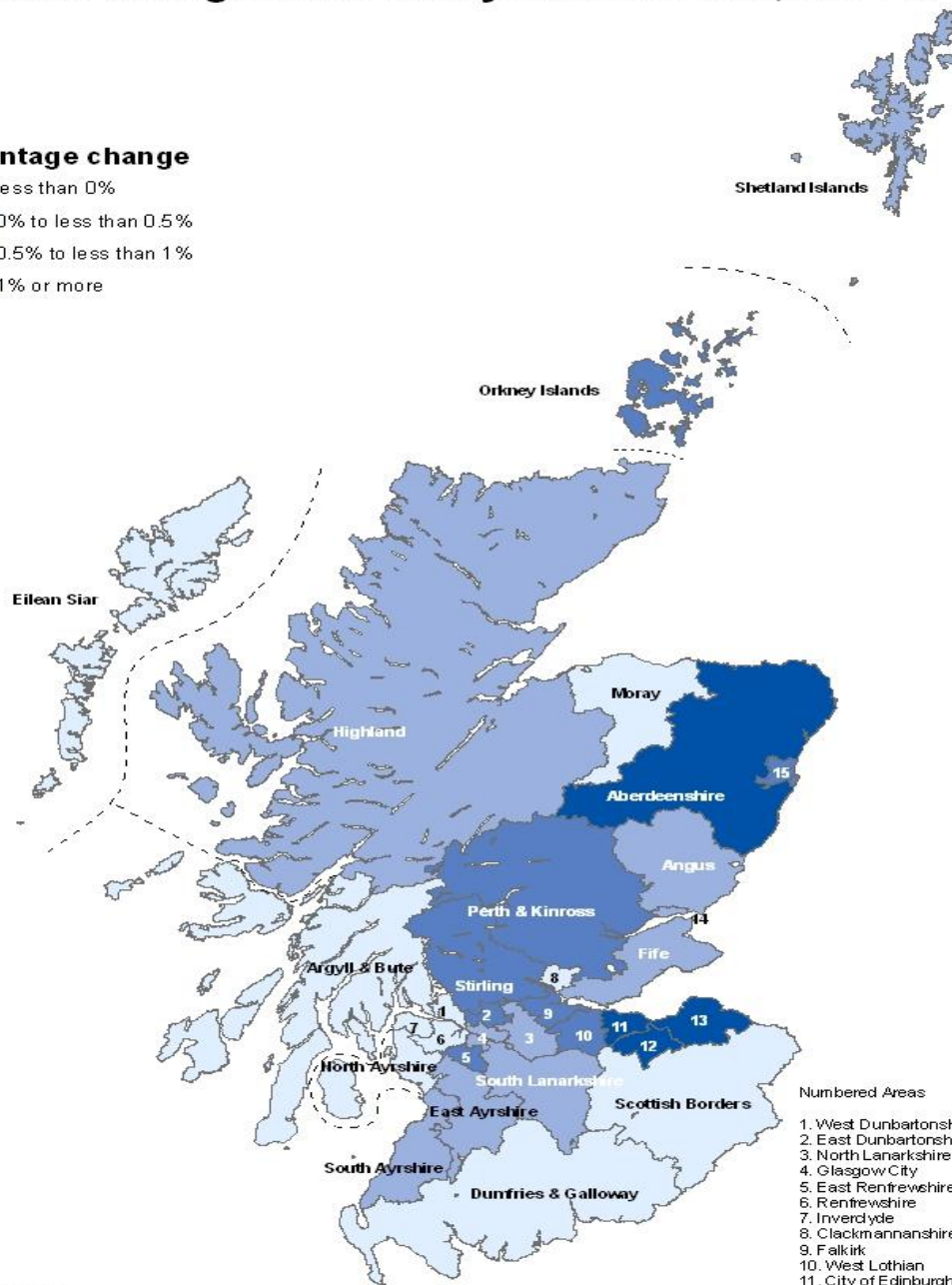
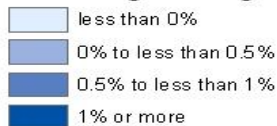


Overseas migration + 9,700 much lower than previous three years drop in in-mig, rise in out-mig



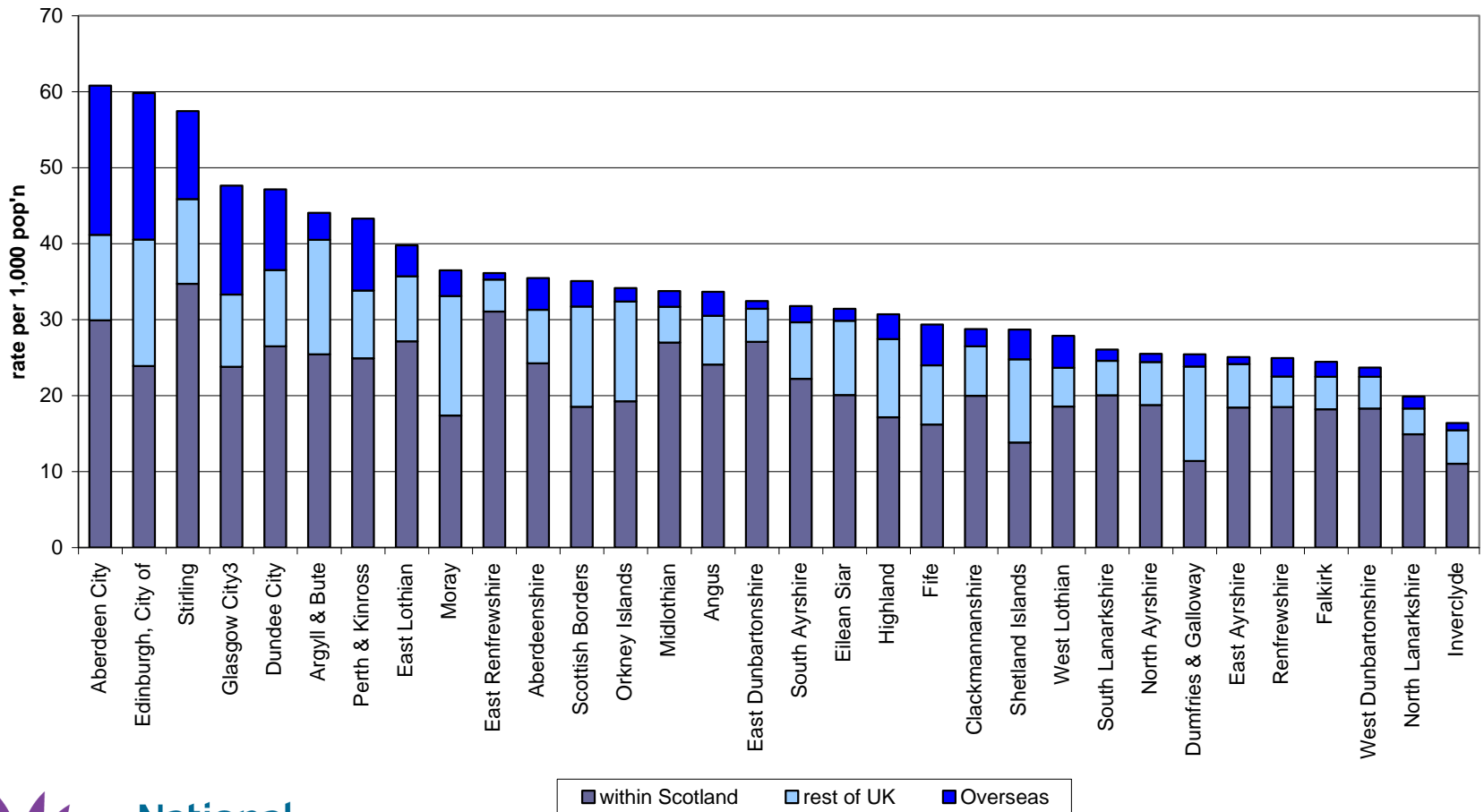
Population change Scotland by Council Area, 2011 to 2012

Percentage change



- Numbered Areas
1. West Dunbartonshire
 2. East Dunbartonshire
 3. North Lanarkshire
 4. Glasgow City
 5. East Renfrewshire
 6. Renfrewshire
 7. Inverclyde
 8. Clackmannanshire
 9. Falkirk
 10. West Lothian
 11. City of Edinburgh
 12. Midlothian
 13. East Lothian
 14. Dundee City
 15. Aberdeen City

Council areas: in-migrants as rate per 1,000 of population



- ▶ National Indicators
- ▶ Useful background

Search

Search for:

we will expand and deepen our analysis. As it develops, 'Performance at a Glance' will provide a useful 'first-stop' for anyone seeking an overall picture of the state of Scotland.

Purpose Targets

Economic Growth

- ▲ To raise the GDP growth rate to the UK level by 2011
- ▲ To match the GDP growth rate of the small independent EU countries by 2017

Productivity

- ↔ To rank in the top quartile for productivity against our key trading partners in the OECD by 2017

Participation

- ↔ To maintain our position on labour market participation as the top performing country in the UK
- ↔ To close the gap with the top five OECD economies by 2017

Population

- ↔ To match average European (EU15) population growth over the period from 2007 to 2017
- ▲ Supported by increased healthy life expectancy in Scotland over the period from 2007 to 2017

Solidarity

- ↔ To increase overall income and the proportion of income earned by the three lowest income deciles as a group by 2017

Cohesion

- ▼ To narrow the gap in participation between Scotland's best and worst performing regions by 2017

Sustainability

- ▲ To reduce emissions over the period to 2011
- ▲ To reduce emissions by 80 percent by 2050

National Indicators

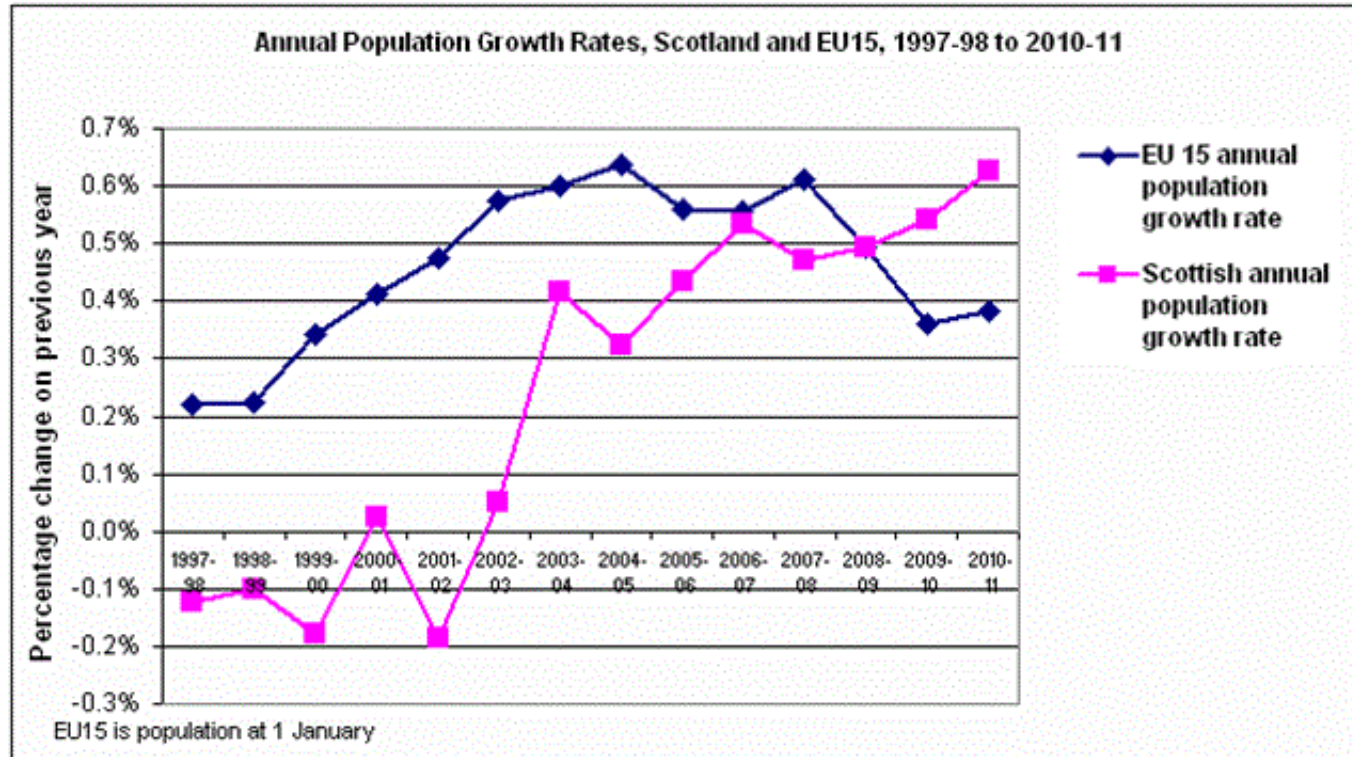


	2007-08	2008-09	2009-10	2010-11
EU15 annual rate of change	0.61	0.49	0.36	0.38
Scotland annual rate of change	0.47	0.49	0.54	0.63
Difference	0.14	0.00	-0.18	-0.24
Change in difference	-0.12	0.14	0.18	0.06
Arrow	down	up	up	maintaining

The evaluation is based on: any difference in the gap within +/- 0.1 percentage points of last year's figure suggests that the position is more likely to be maintaining than showing any change. A movement of 0.1 percentage points or more in Scotland's favour suggests that the position is improving, whereas a movement of 0.1 percentage point or more to Scotland's detriment suggests that the position is worsening.

Scotland Performs Purpose Target

To match average European (EU15) population growth over the period from 2007 to 2017



- Will update target once 2002 to 2010 populations estimates have been rebased (October / November)

Further work

- Work to improve population estimates is continuing, including investigating other sources such as:
 - HESA data
 - Council Tax data
- Further work will use 2011 Census data on previous address and country of birth to evaluate our migration data and assumptions.
- The SLS will use data linkage to compare the Censuses and administrative sources.
- The Beyond 2011 Programme is also exploring the future provision of population statistics in Scotland. As part of this Programme NRS are investigating a range of solutions, to produce population statistics in future.

More information

Website: www.nrscotland.gov.uk

E-mail: customer@gro-scotland.gsi.gov.uk

Tel: 0131 314 4299

Follow us on Twitter: @NatRecordsScot |

<http://twitter.com/NatRecordsScot>



NORTHERN IRELAND

Latest trends and estimates in long-term migration

17th September 2013

Cara Feeney

COMPONENTS OF POPULATION CHANGE IN NI MID-2011 TO MID-2012

Mid-2011 Population = 1,814,318



Natural change (11,089)

Births	25,324
Deaths	14,235



Net Migration (-1,315)

GB	-1,757
International	442



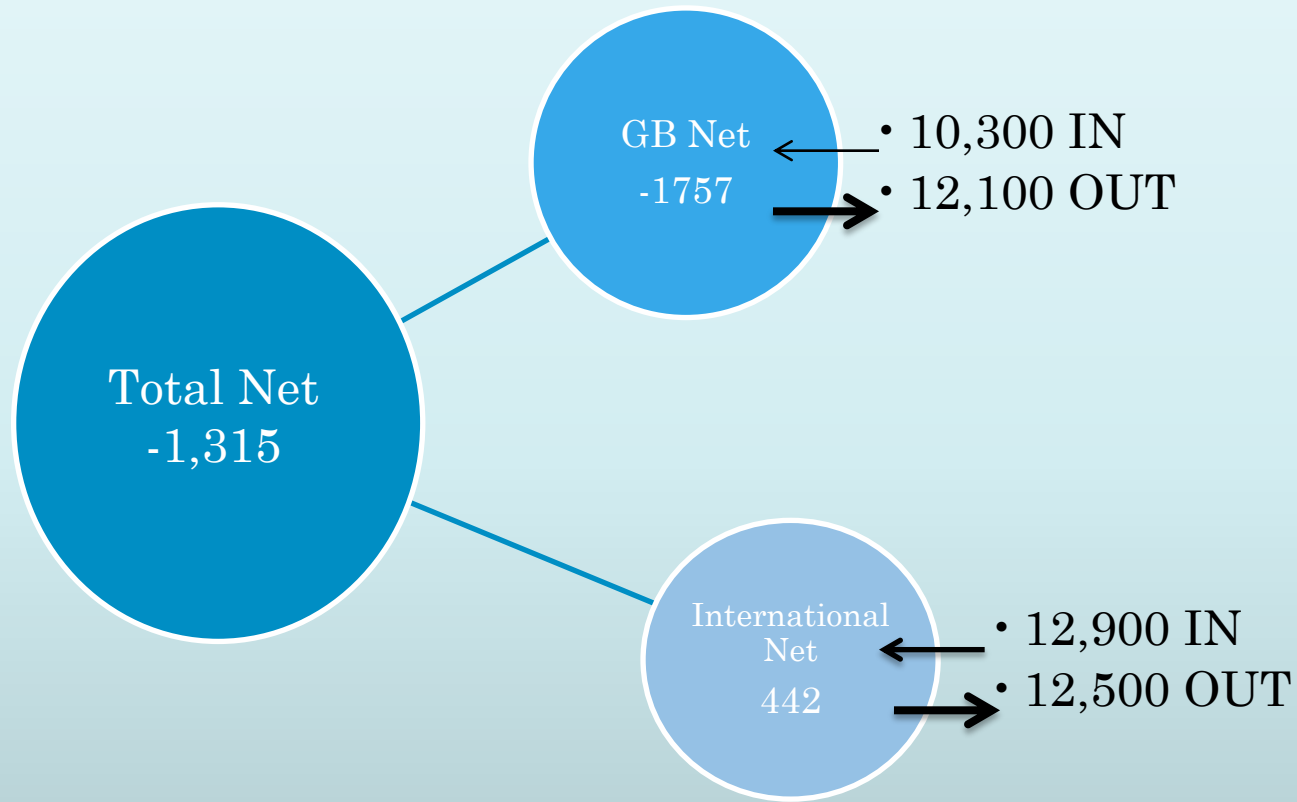
Other Changes (-458)



Mid-2012 Population = 1,823,634



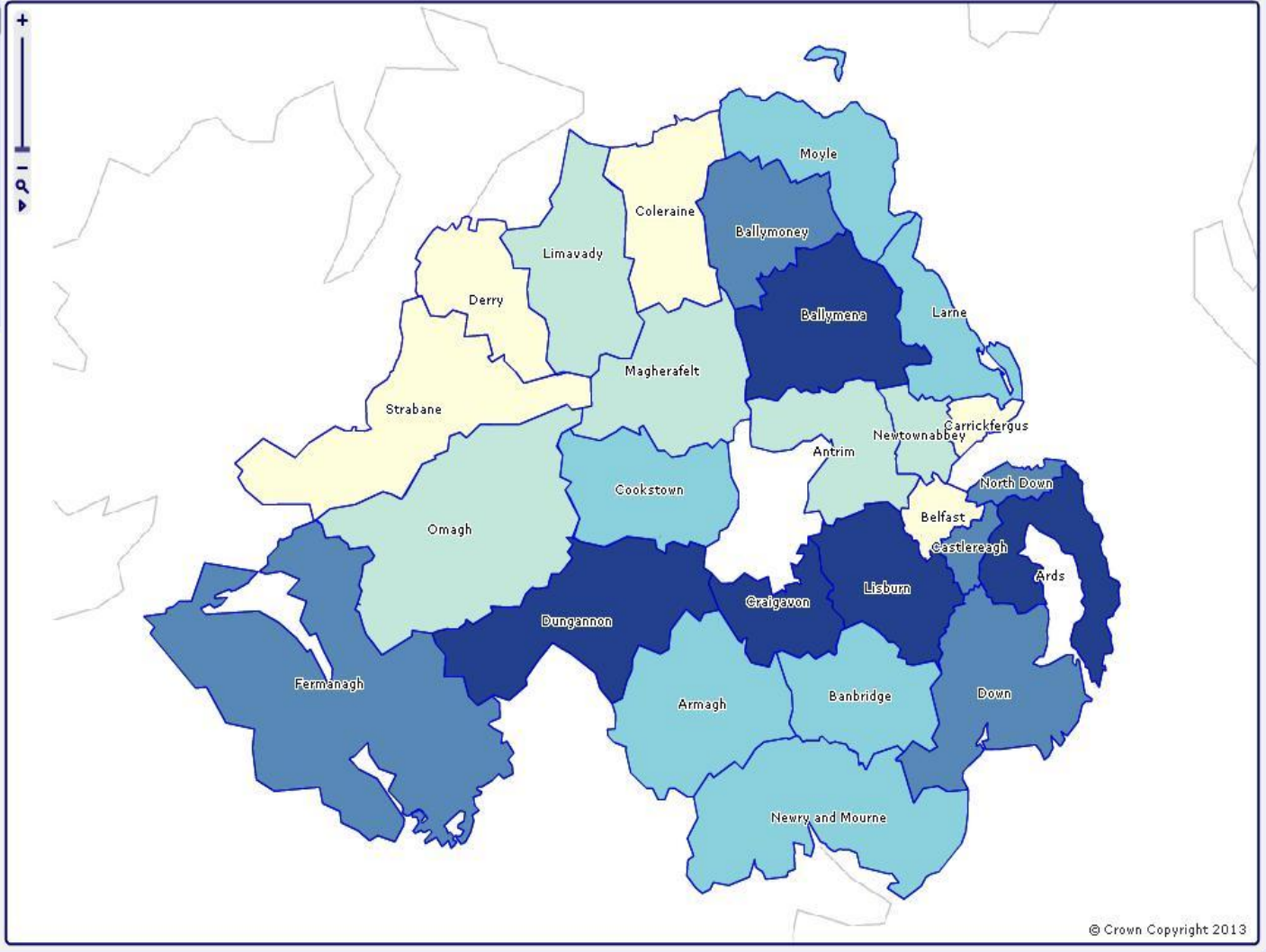
LATEST MIGRATION ESTIMATES FOR MID-2012



Components of Population Change

Net Migration - 2012

-1,819 - -143
 -142 - -7
 -6 - 35
 36 - 157
 158 - 421
 O Towns and Cities
 Local Government Districts
 Health and Social Care Trusts
 Background Mapping



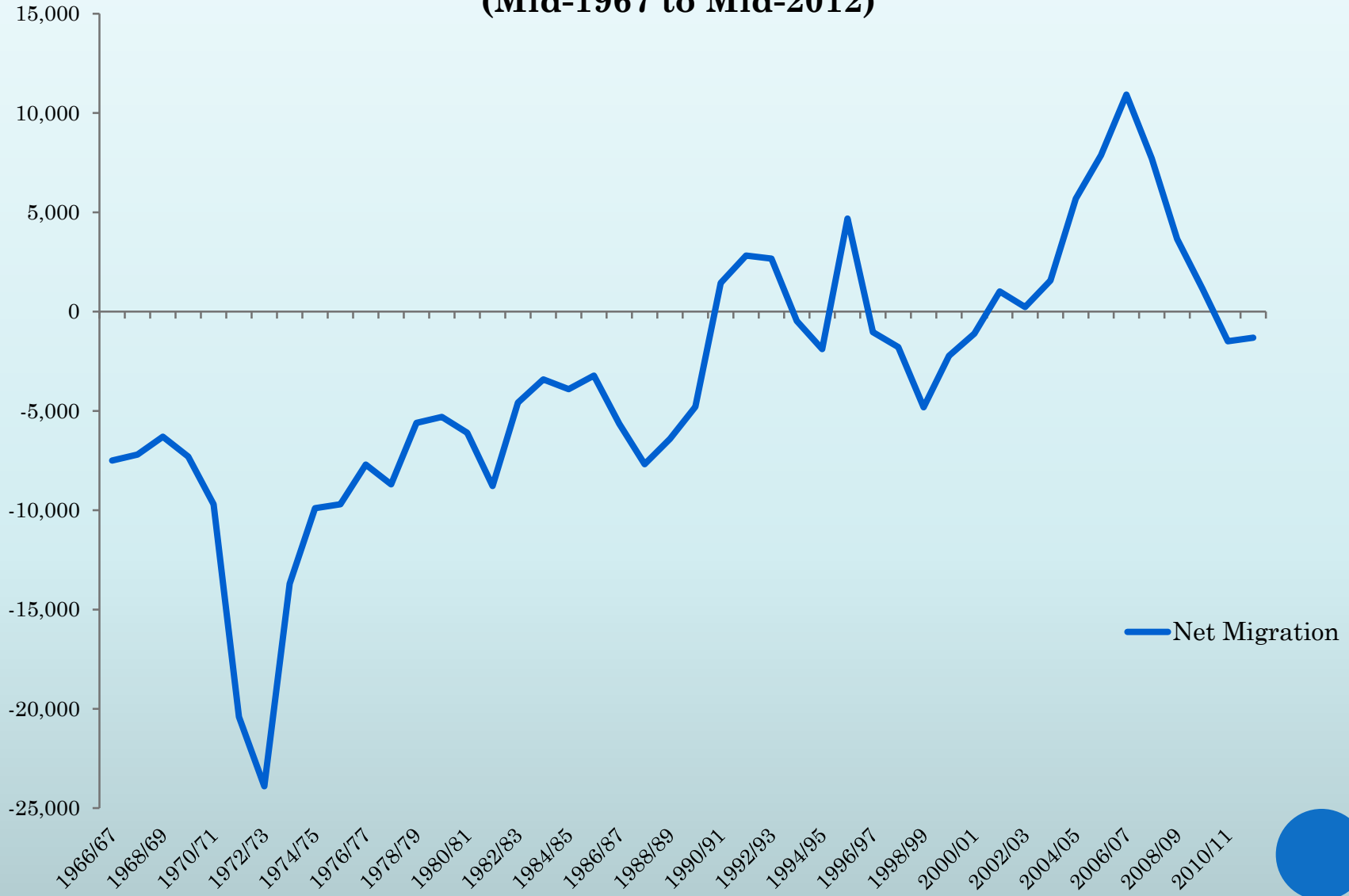
MEASURING MIGRATION IN NORTHERN IRELAND

- Issues with IPS in NI
 - Land border between NI and Republic of Ireland (RoI)
 - “Ireland” as a response – RoI or NI?
- GP Registrations / Deregistrations
 - Central Health Index (CHI)
 - Since 2006 – Previous country, reason, intend to stay
- Rebased 2001-2011



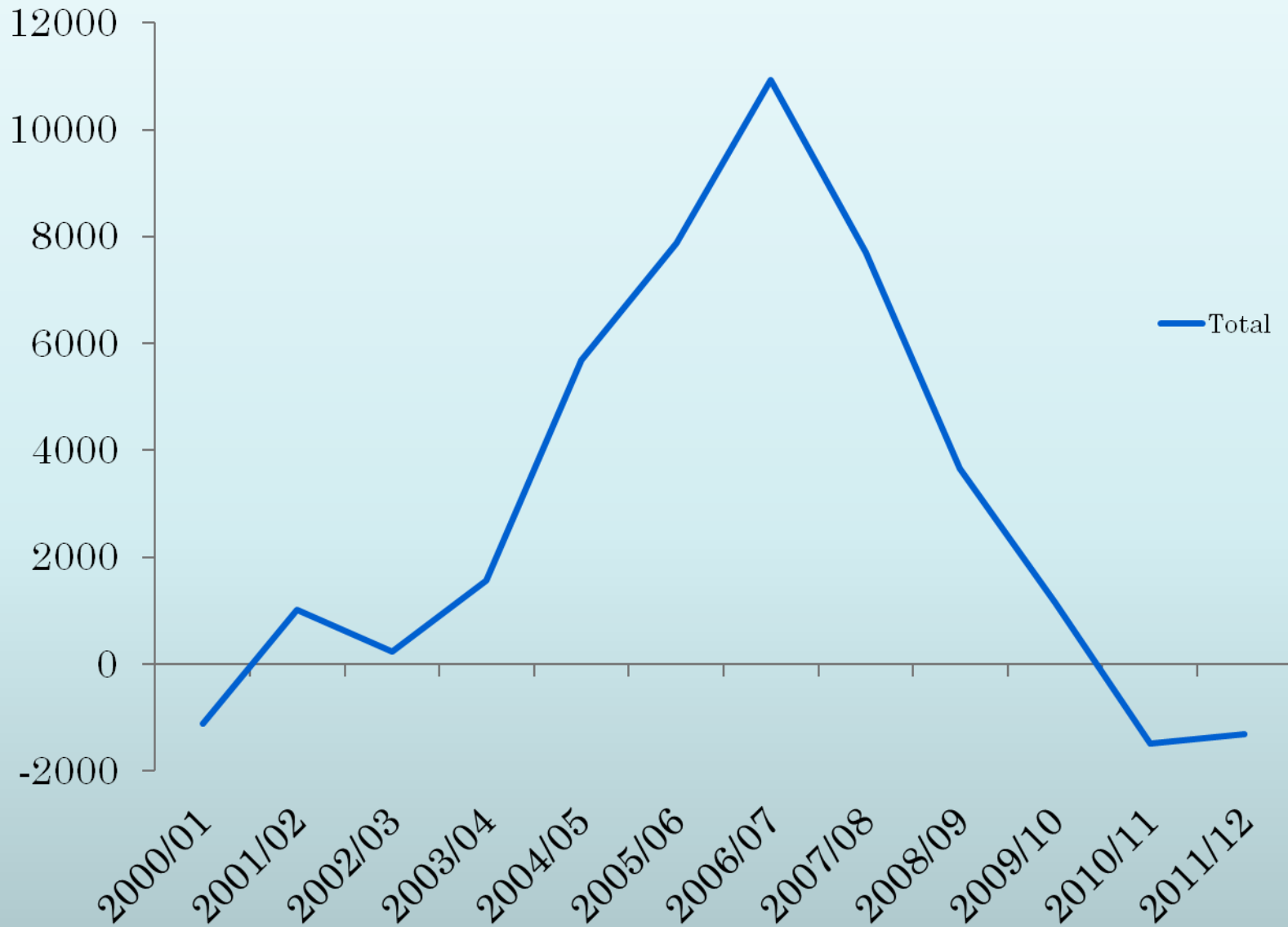
Migration Over the Years

(Mid-1967 to Mid-2012)



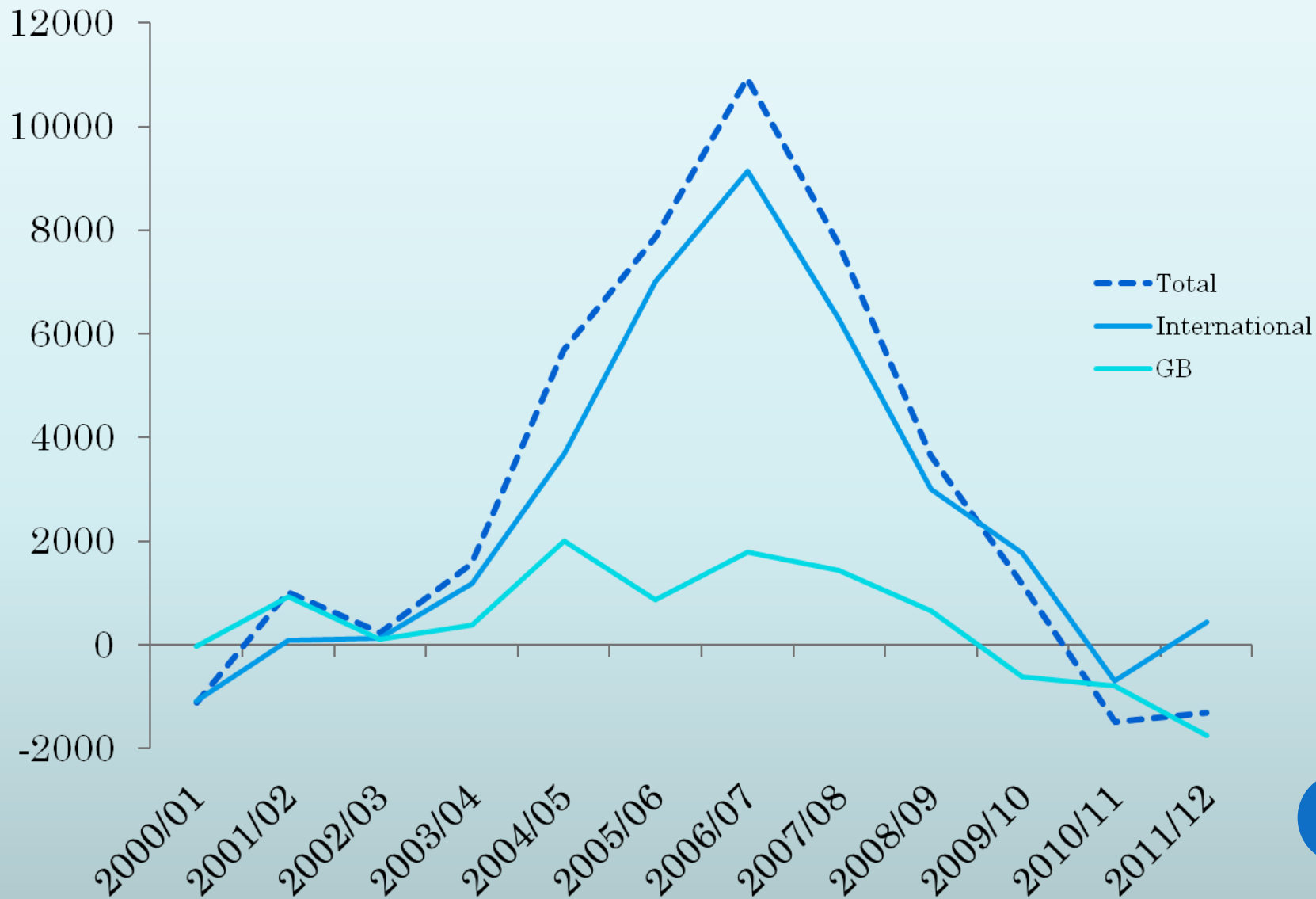
Total Net Migration

(Mid-2001 to Mid 2012)



International, GB & Total Net Migration

(Mid-2001 to Mid 2012)



QUALITY ASSURANCE: ADMINISTRATIVE DATA SOURCES

- the United Kingdom Border Agency Schemes for A2 nationals;
- the Home Office Points Based System;
- new National Insurance Numbers registered to foreign nationals;
- the Department of Education Annual School Census;
- enrolments at higher education institutions of non-UK/Ireland domiciled students;
- the country of birth of new Northern Ireland mothers/fathers;
- new registrations with a family doctor;
- the Northern Ireland Housing Executive;
- exchange of driving licenses;
- requests for interpreters in Health services
- the Labour Force Survey
- de-registrations from the family doctor system – health cards;
- out-migration questions added to household surveys in Northern Ireland; and
- out-migration questions added to the 2009 School Census run by the Department of Education.
- 2011 Census



QUALITY ASSURANCE: ADMINISTRATIVE DATA SOURCES

COUNTRY OF BIRTH OF PERSONS IN NORTHERN IRELAND (2001 AND 2011 CENSUS)

Country of Birth	2001		2011	
	Persons	% of Population	Persons	% of Population
Northern Ireland	1,534,300	91.0	1,608,900	88.8
Rest of UK	81,500	4.8	82,700	4.6
Republic of Ireland	42,300	2.5	37,800	2.1
Other EU15 Countries ²	6,500	0.4	9,700	0.5
EU12 Countries ³	900	0.1	35,700	2.0
Other Countries	19,800	1.2	36,000	2.0
Total	1,685,300		1,810,900	

¹ Figures are rounded to the nearest 100; some totals may not add up due to rounding. Further information on the 2001 Census and the 2011 Census, as well as additional figures are available from the NINIS and NISRA websites.

² EU15 Countries relates to the EU members prior to the 2004 expansion.

³ EU12 Countries relates to the Accession countries added from 2004 onwards.



QUALITY ASSURANCE: ADMINISTRATIVE DATA SOURCES

○ Birth Registrations

- NI-born children with a mother born outside UK/RoI:
 - 3% in 2001
 - 10% since 2010

○ School Census

- Primary school children with English as an additional language:
 - 16% increase between 2011 and 2012
 - Polish and Lithuania



CONCLUSIONS

○ In-Migration

- Continued, but modest decrease
 - NINo/ Health Cards show a fall in registrations

○ Out-Migration

- Indications of slight increase
 - But – School Census, Higher Education and birth registrations remain strong.



CONCLUSIONS

- Migration Statistics
 - Useful for policy developers and service providers
 - e.g. increased translators for schools / healthcare / etc
 - Key component of population statistics
 - Mid-year population estimates
 - Population projections



LINKS

- Migration estimates for mid-2011 to mid-2012 were produced and released alongside the mid-year population estimates on 26 June 2013. Detailed tables and additional reports can be accessed on the NISRA website:

<http://www.nisra.gov.uk/demography/default.asp17.htm>

- Further statistics and interactive maps can be found on the NINIS website:

<http://www.nisra.gov.uk/ninis>





Llywodraeth Cymru
Welsh Government

www.cymru.gov.uk

Wales Migration

17 September 2013

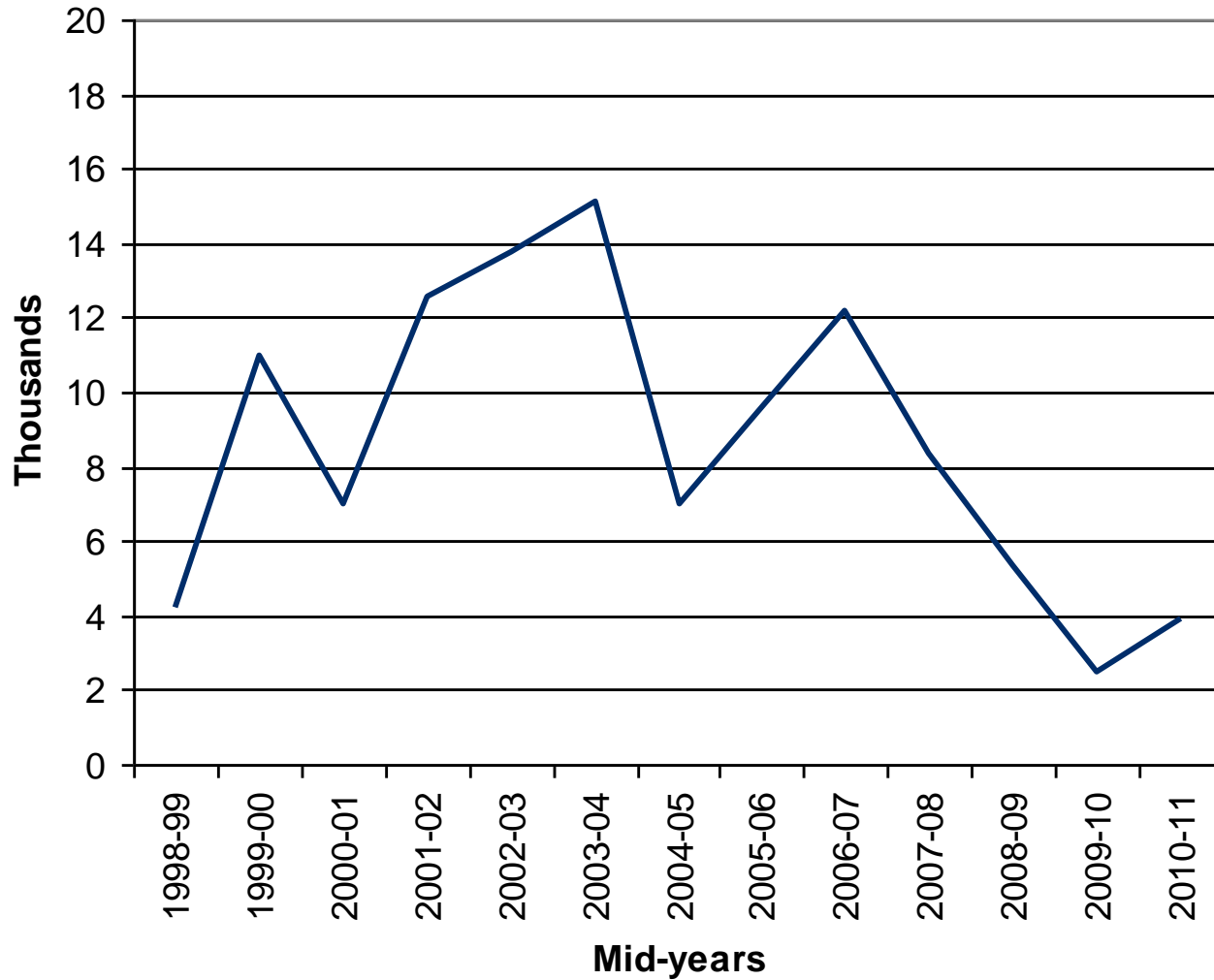
Tony Whiffen

Migration to/from Wales

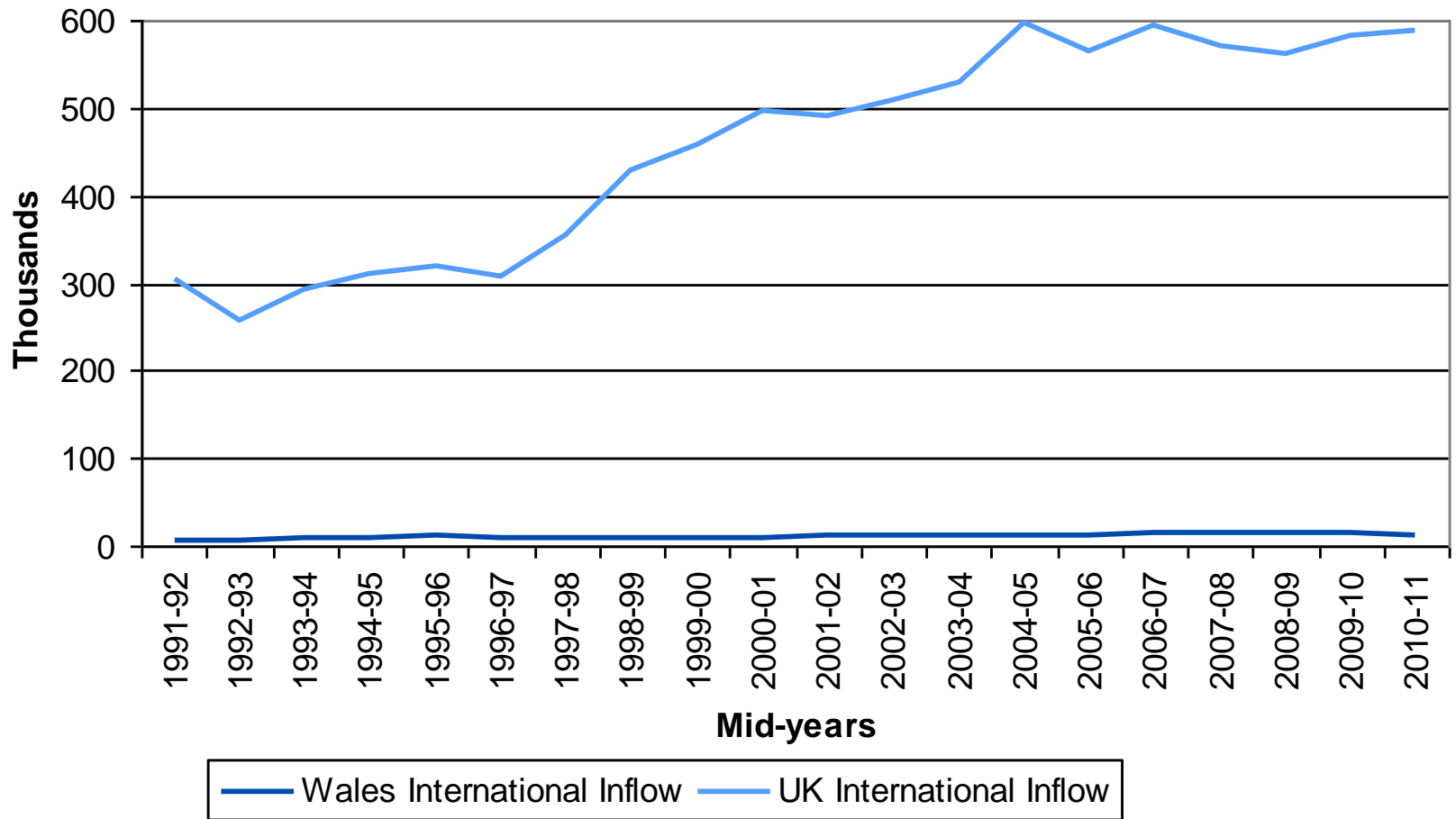
- Wales Annual Total Flows:
 - Inflow 70,000*
 - Outflow 66,000*
- Net Inflow to Wales since early 1990s
- Range +2,000 to +15,000 since 2001
- Varies considerably →

* - ONS Figures for mid-2010 to mid-2011

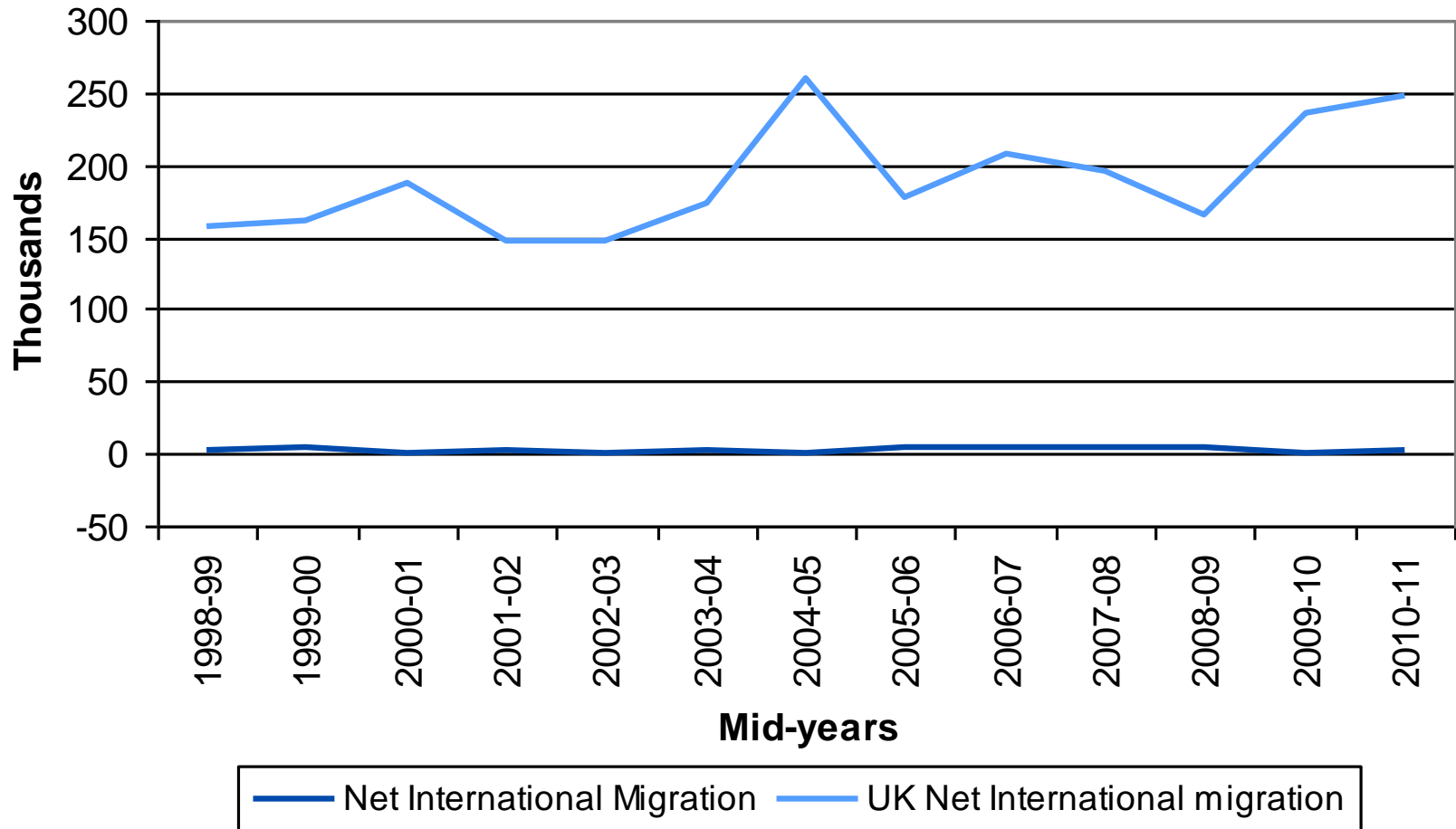
Net Migration to Wales 1998-99 to 2010-11



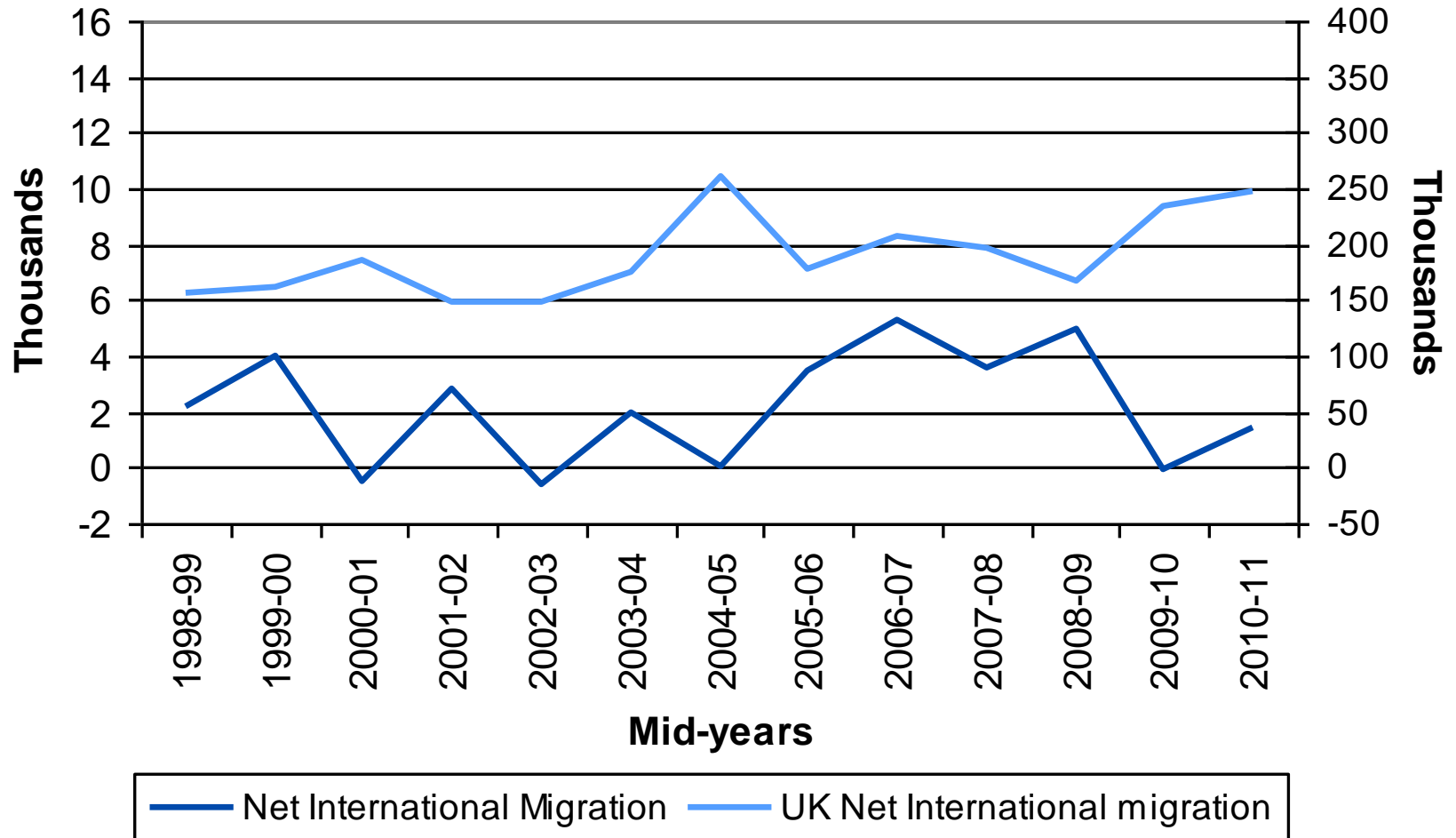
International Inflows to Wales and UK 1991-92 to 2010-11



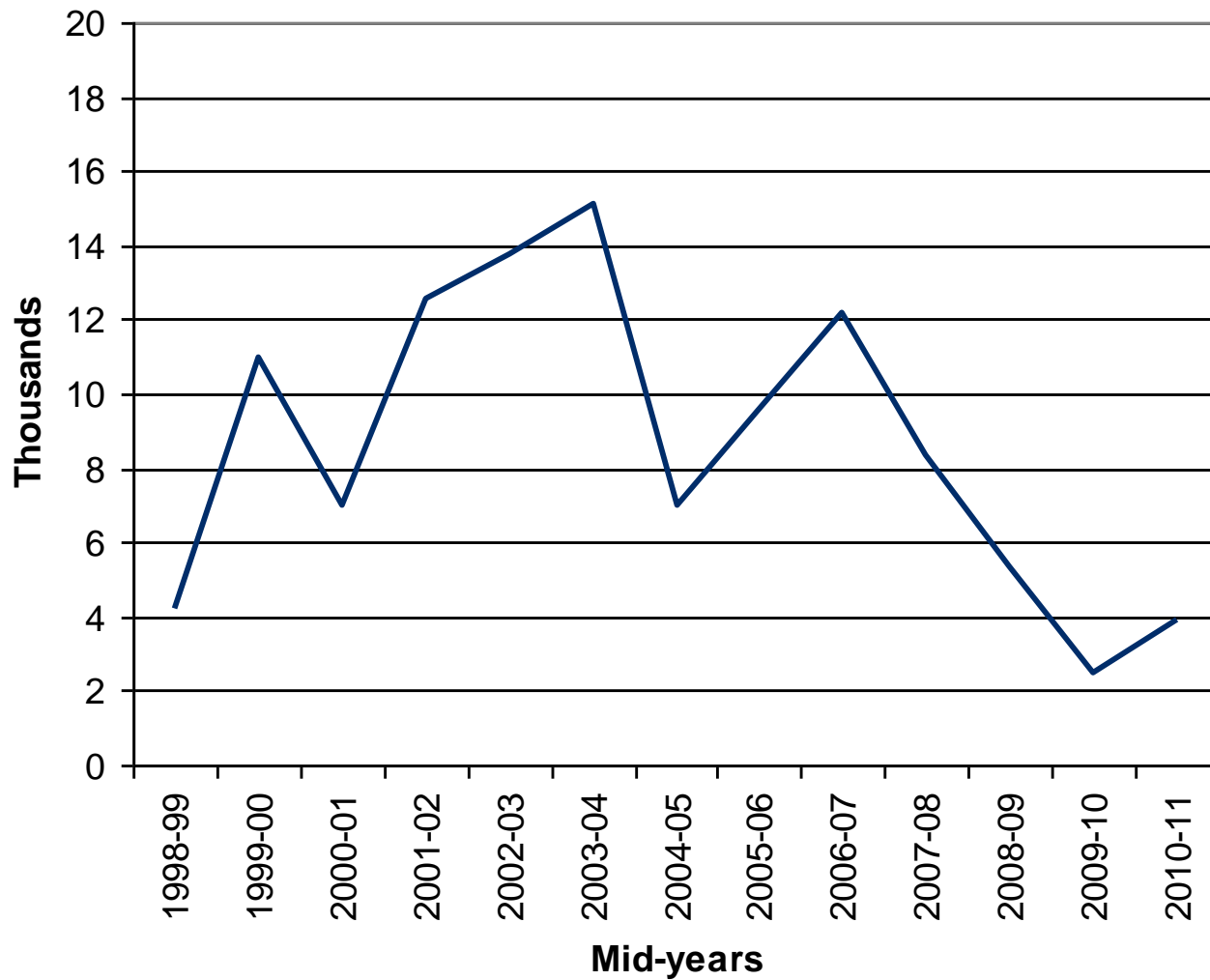
Net International Migration to Wales and UK 1991-92 to 2010-11



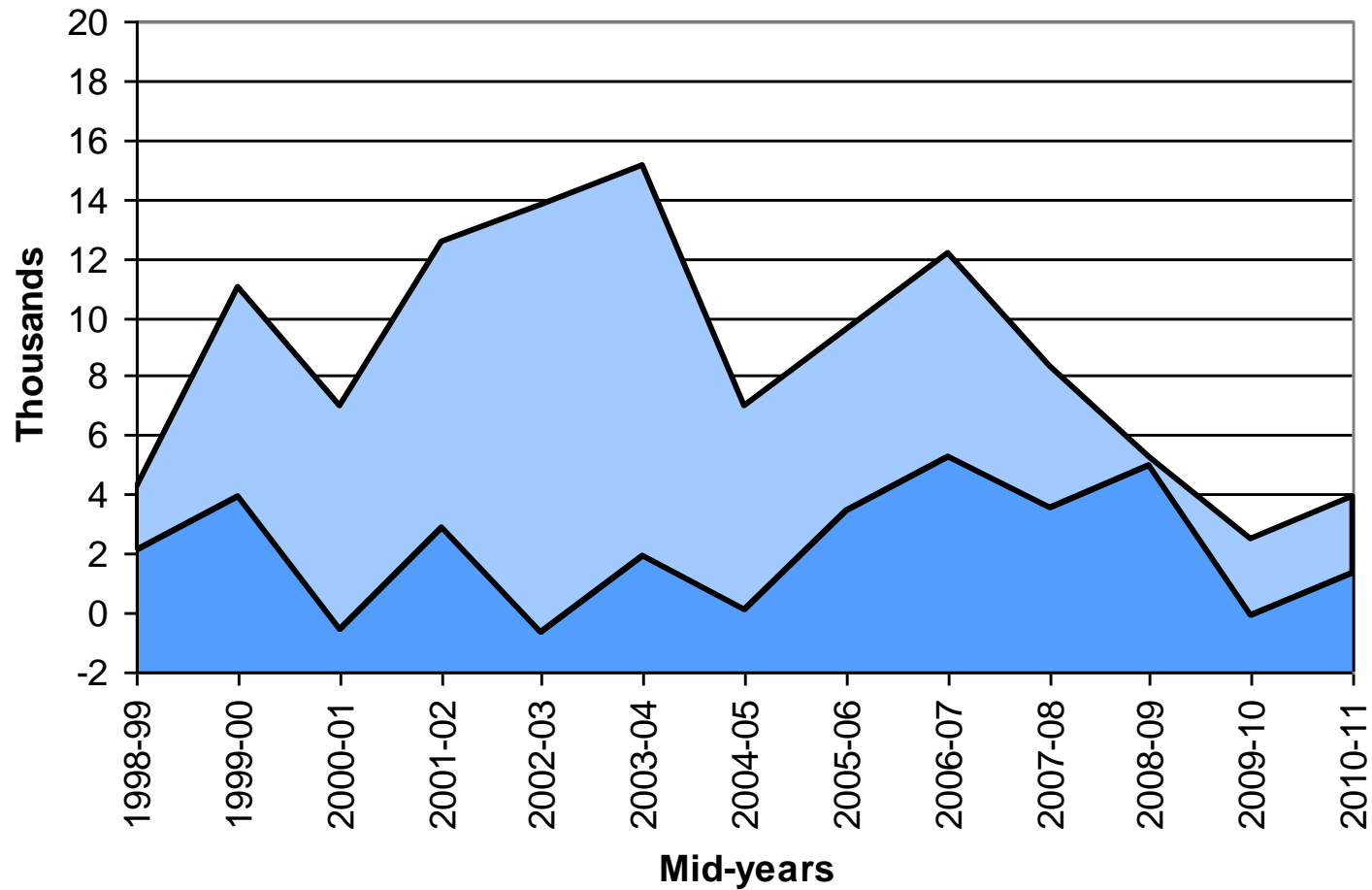
Net International Migration to Wales and UK 1991-92 to 2010-11



Net Migration to Wales 1998-99 to 2010-11



Net International and Internal Migration to Wales, 1998-99 to 2010-11



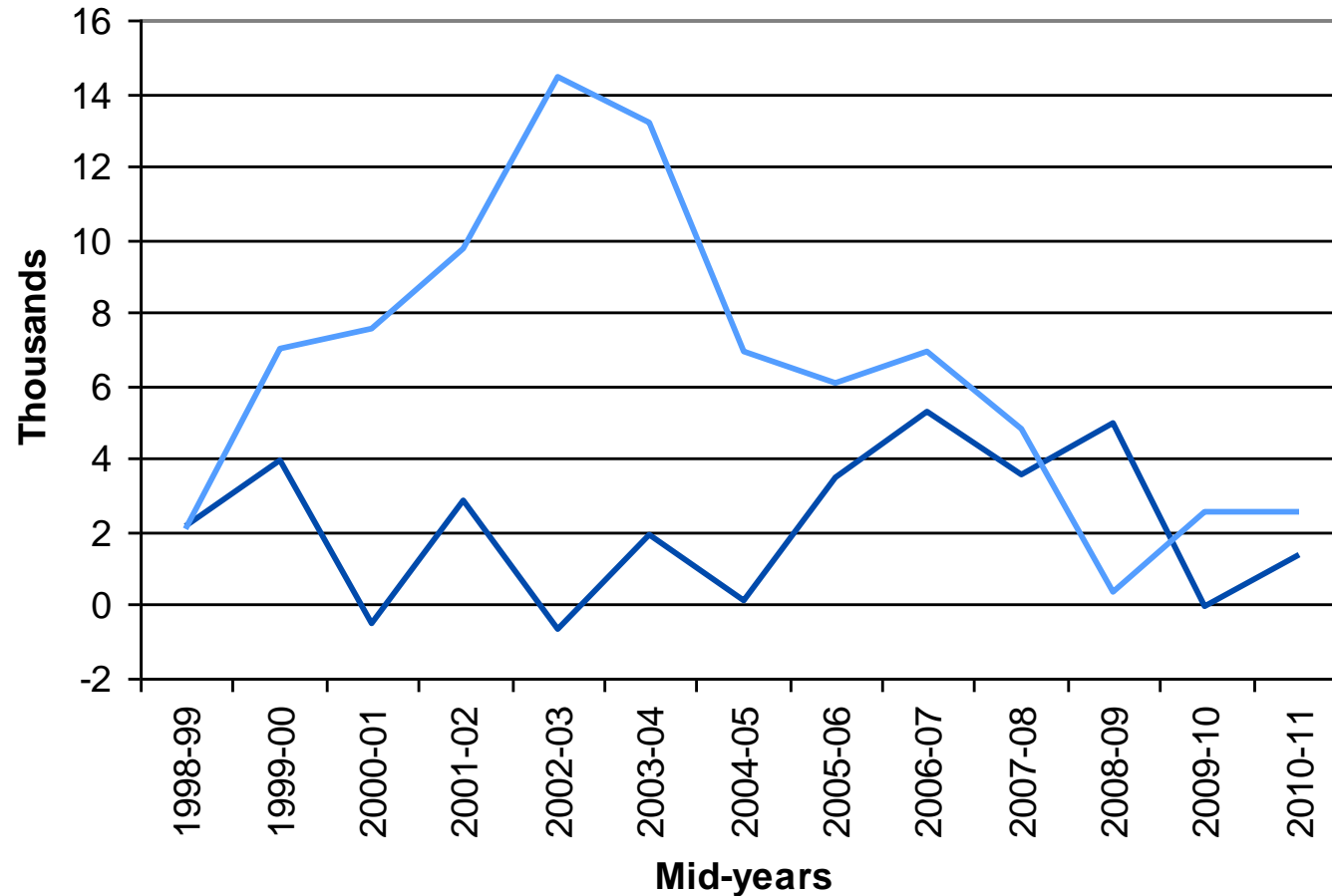
■ Net International Migration

■ Net Migration from rest of the UK

Internal Migration to Wales

- Annual Inflows and Outflows of 50,000+
- Gross flows of 100,000+ (3% of Wales pop.)
- Net Migration from rest of the UK up to:
 - 14,000 in 2002-03 and 2003-04
 - a few hundred in 2008-09
 - 2,500 thereafter

Net International and Internal Migration to Wales 1998-99 to 2010-11



— Net International Migration — Net Migration from rest of the UK

Internal Migration - Age Profile

Thousands

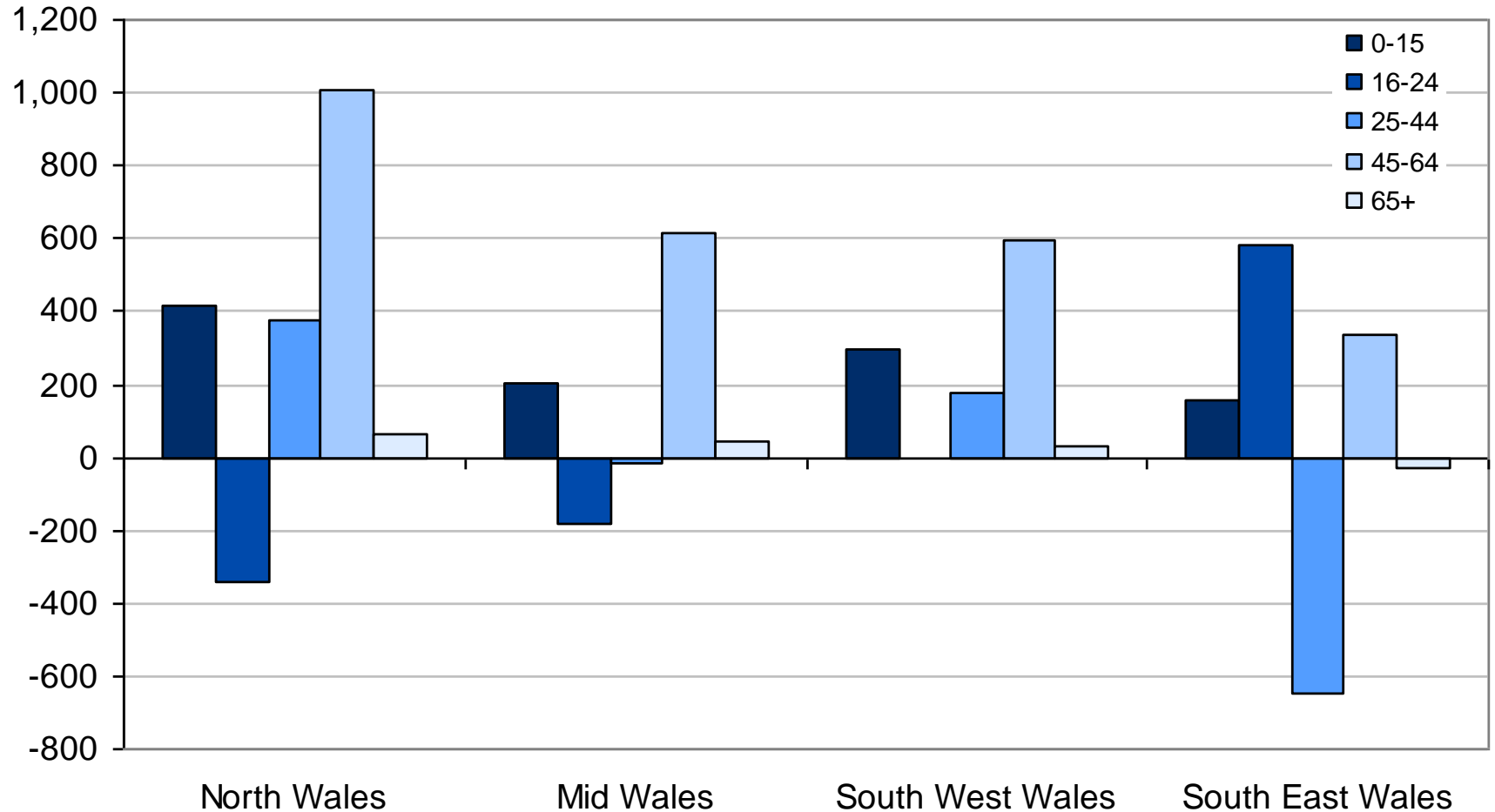
	Population (a)	Inflow	Outflow	Net Migration	Total Migration	Turnover Rate% (b)
All ages	3,037.0	56.5	52.8	3.7	109.3	3.6
Under 16	557.6	7.2	6.1	1.1	13.3	2.4
16-24	367.3	21.4	21.3	0.1	42.7	11.6
25-44	764.5	16.9	17.0	-0.1	33.9	4.4
45-64	799.7	8.0	5.5	2.6	13.5	1.7
Over 65	547.9	3.0	2.9	0.1	5.9	1.1

Source: Internal Migration Estimates, Office for National Statistics

(a) Calculated as the average yearly population between year ending mid-2007 and year ending mid-2011.

(b) Calculated as the sum of average in-migration and average out-migration as a percentage of the average mid-year population.

Internal Migration - Age Profile by Region



Summary

- Migration patterns different to UK
- Net Inflows since early 1990s but lower in recent years
- Internal Migration from rest of UK greater than International
- Flows in balance at younger ages, net inflow for 45-64

How we use migration statistics

- Wales' Population Publication
- Ad-hoc Migration Bulletin
- Local Authority Population Projections - Migration Assumptions
 - 5 year average data
 - 10 year average data variant

Migration in the Devolved Administrations: An Academic Perspective

Stephen Drinkwater
WISERD, Swansea University



Outline

- Migration Stocks and Flows
 - Position in 2001 (Census)
 - Flows 2001-11 (LTIM and NINo)
 - Position in 2011 (APS and Census)
- Migrants and the Welsh labour market (LFS)
 - Employment
 - Occupation (and Education)
 - Earnings
- Summary of Key Findings/Issues



Table 1: Population by Broad Region of Birth for Countries of the UK, 2001

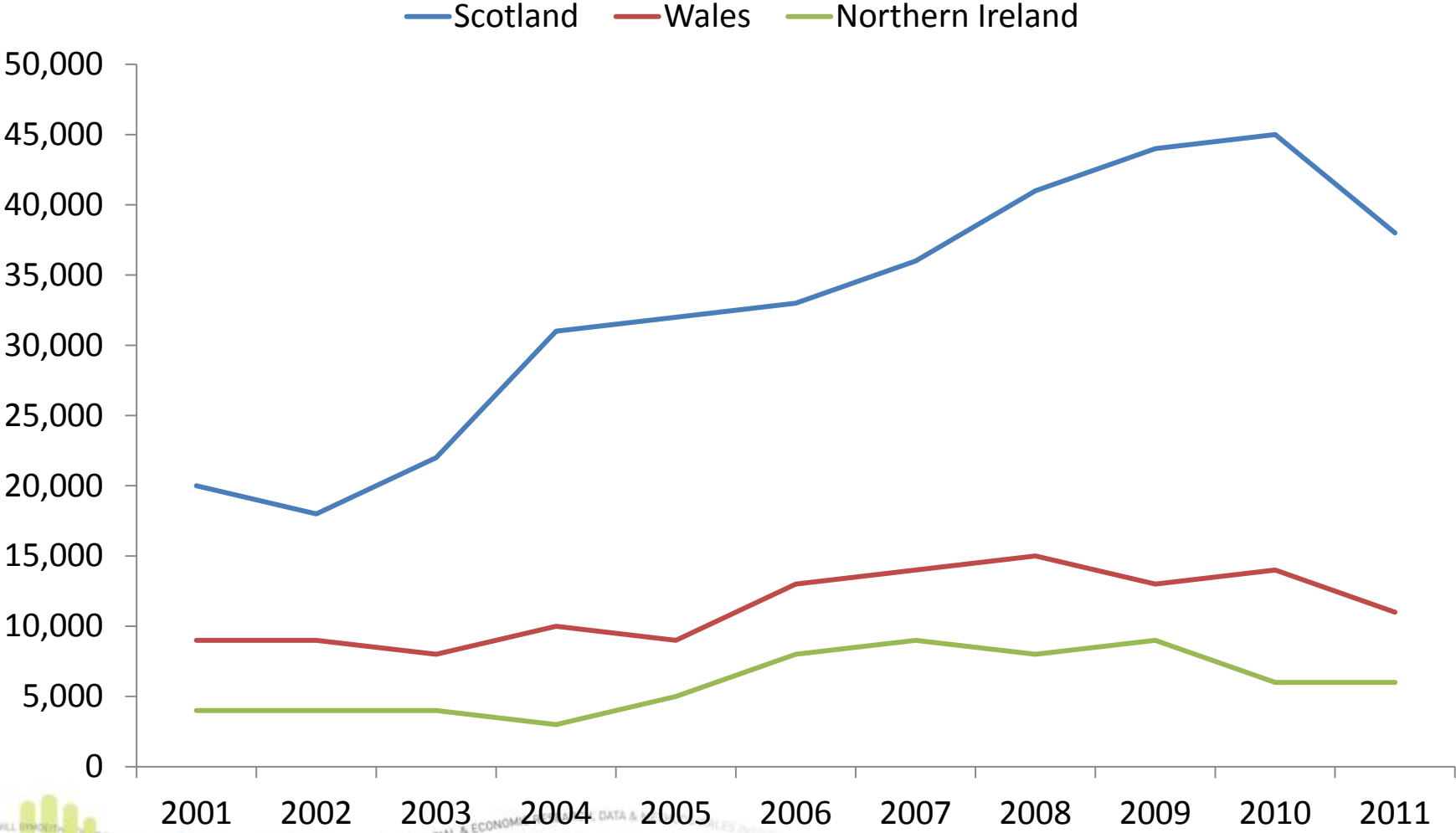


	UK born		Old-EU		Eastern Europe		Other Countries		Total Pop.
	Estimate	%	Estimate	%	Estimate	%	Estimate	%	
Wales	2,811,594	96.8	34,333	1.2	4,033	0.1	53,125	1.8	2,903,085
Scotland	4,870,440	96.2	63,610	1.3	7,332	0.1	120,629	2.4	5,062,011
Northern Ireland	1,615,769	95.9	45,506	2.7	707	0.0	23,285	1.4	1,685,267
London	5,231,701	72.9	370,760	5.2	118,435	1.7	1,451,197	20.2	7,172,093
Rest of England	39,363,116	93.8	748,963	1.8	117,465	0.3	1,737,193	4.1	41,966,737
UK	53,892,620	91.7	1,263,172	2.1	247,972	0.4	3,385,429	5.8	58,789,193

Sources: ONS, GROS and NISRA



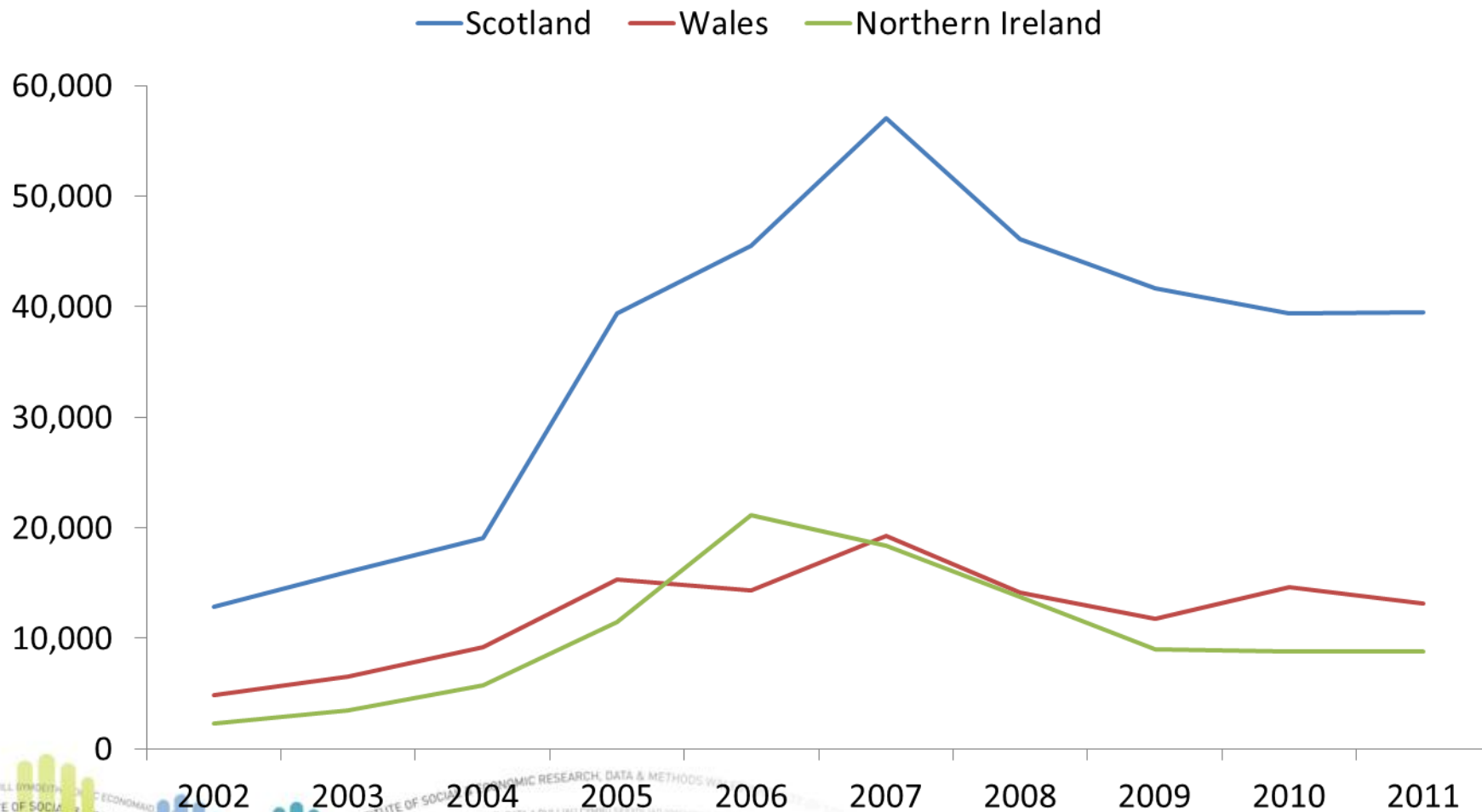
Fig. 1: LTIM Estimates of International Migration to the Devolved Nations, 2001-11



Source: ONS



Fig. 2: NI No Registrations by Overseas Nationals in Devolved Nations, 2002-11



Source: DWP



Table 2: NINo Registrations by Overseas Nationals in Countries of the UK, 2002-12



	Old-EU	New-EU	Non-EU	Total
Total Registrations	1,020,610	1,947,250	2,842,910	5,810,770
% in Wales	1.9	2.5	2.0	2.2
% in Scotland	6.4	8.1	5.0	6.3
% in Northern Ireland	2.0	3.2	0.7	1.8
% in London	49.4	27.5	45.6	40.2
% in Rest of England	40.3	58.8	46.7	49.6

Source: DWP



Table 3: Migrant Population in Countries of the UK, 2011



APS	UK Born		Old-EU		New-EU		Non-EU		Total Pop.
	Estimate	%	Estimate	%	Estimate	%	Estimate	%	
Wales	2,833,000	94.8	34,000	1.1	24,000	0.8	97,000	3.2	2,988,000
Scotland	4,820,000	93.4	65,000	1.3	89,000	1.7	186,000	3.6	5,160,000
Northern Ireland	1,683,000	94.1	31,000	1.7	39,000	2.2	36,000	2.0	1,789,000
London	4,986,000	63.9	425,000	5.5	344,000	4.4	2,044,000	26.2	7,798,000
Rest of England	39,912,000	90.7	753,000	1.7	713,000	1.6	2,629,000	6.0	44,008,000
UK	54,233,000	87.8	1,308,000	2.1	1,209,000	2.0	4,992,000	8.1	61,742,000
Wales (Census)	2,895,585	94.5	38,518	1.3	29,017	0.9	100,336	3.3	3,063,456

Source: ONS



Labour Market Outcomes



- Analysis uses data from the Labour Force Survey (LFS)
 - widely used to examine the experiences of migrants in the UK labour market
- 32 quarters of data from 2004-11 have been pooled
 - just wave 1 respondents selected
 - sample consists of people of working age (excl. FT students)
- Same 5 areas of the UK focused on: Wales, Scotland, NI, London and Rest of England
 - Same 3 migrant groups considered (but restricted to those arriving in the UK since 2000)
 - UK born aged under 45 also reported for comparison



**Table 4: Employment Rates for Migrant Groups
in Countries of the UK**

	UK Born	Old-EU	New-EU	Non-EU
Wales	77.2	79.3	89.1	71.4
Scotland	79.5	80.5	86.3	71.5
Northern Ireland	76.3	70.2	87.3	80.5
London	77.4	79.6	81.2	64.6
Rest of England	80.0	82.7	83.7	66.5
UK	79.4	80.8	83.6	66.4



Table 5: Percentage in Low Skilled Occupations for Migrant Groups in Countries of the UK

	UK Born	Old-EU	New-EU	Non-EU
Wales	38.7	45.7	73.4	38.5
Scotland	36.0	31.5	71.2	36.3
Northern Ireland	34.2	30.8	69.9	39.9
London	21.3	22.2	53.6	33.3
Rest of England	33.9	32.9	73.1	43.9
UK	33.4	29.3	68.3	39.9



**Table 6: Percentage with High Levels of Education
(left FT Ed. >age 20) for Migrant Groups in
Countries of the UK**

	UK Born	Old-EU	New-EU	Non-EU
Wales	17.8	43.6	26.7	47.3
Scotland	18.0	55.6	36.2	49.3
Northern Ireland	21.8	41.8	22.0	48.9
London	35.6	63.4	37.8	52.2
Rest of England	18.0	48.7	36.1	43.7
UK	19.5	53.9	35.6	46.9



Table 7: Average Hourly Earnings for Migrant Groups in Countries of the UK

	UK Born	Old-EU	New-EU	Non-EU
Wales	10.14 (6.04)	8.85 (5.45)	6.57 (2.27)	10.80 (6.89)
Scotland	10.91 (6.54)	11.48 (7.69)	6.89 (2.49)	9.95 (7.01)
Northern Ireland	9.90 (7.65)	11.91 (8.03)	6.76 (4.01)	8.74 (5.13)
London	16.31 (21.66)	16.94 (18.26)	8.76 (4.94)	13.77 (14.67)
Rest of England	11.22 (8.31)	11.57 (7.66)	7.01 (3.34)	10.78 (9.11)

Earnings are reported in June 2007 £s. Standard Deviation in parentheses.

