

# ONS New Developments

Penni McClure and Nicola White  
Migration Statistics Unit  
Office for National Statistics  
15 September 2015

# New developments

---

- Reconciliation of data sources
- Recent changes to the Migration Statistics Quarterly Report (MSQR)
- Requesting feedback from you, our users

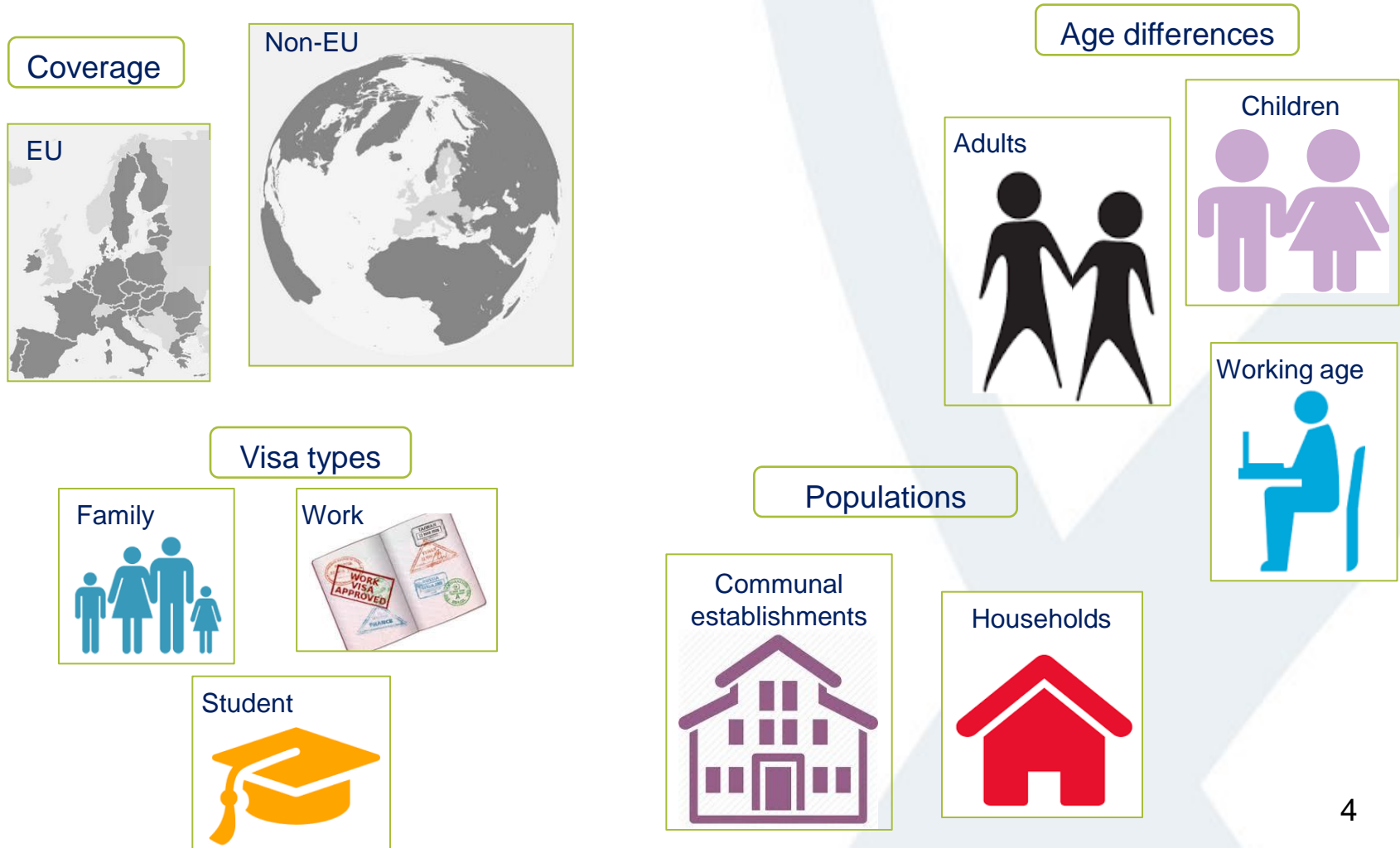
# Reconciliation of data sources

## Different data sources



# Reconciliation of data sources

## Different coverage



# Comparison of International Migration Statistics

	LFS/APS	NINos	IPS	LTIM	Visas	Census
<b>Data Held by</b>	ONS	DWP	ONS	ONS	Home Office	ONS
<b>Frequency</b>	Quarterly	Quarterly	Quarterly	Quarterly	Annual	Decennial
<b>Sample Size</b>	100,000 Households	N/A	800,000 individuals	Part sample survey (IPS) part admin data	N/A	N/A
<b>Main use</b>	Employment and unemployment levels and rates	Adult overseas nationals entering UK for work or benefits	UK inbound and outbound migration, UK international travel and tourism	Long-term International Migration	Visas, settlement, admissions and refusals	Population estimation
<b>Measurement type</b>	Stock	Flow	Flows and stocks	flow	flow	stock
<b>Coverage</b>	UK Household Population	New applicants	UK passenger traffic	UK passenger traffic	UK. All work-based applications	UK
<b>Exclusions</b>	Communal establishments, Armed Forces living in non-private accommodation, temporary foreign workers, illegal immigrants	(Children<16) self-employed	Illegal immigrants, night arrivals, small volume routes, expensive locations to interview at, cruises, NI/ROI boarder, people on own sea vessels. Workers who intend to stay for less than a year (and dependents)	Night arrivals, small volume routes, expensive locations to interview at, cruises, people on own sea vessels, some illegal immigrants	Illegal Immigrants not detained	short-term residents who live in the UK for summer seasonal work, illegal immigrants

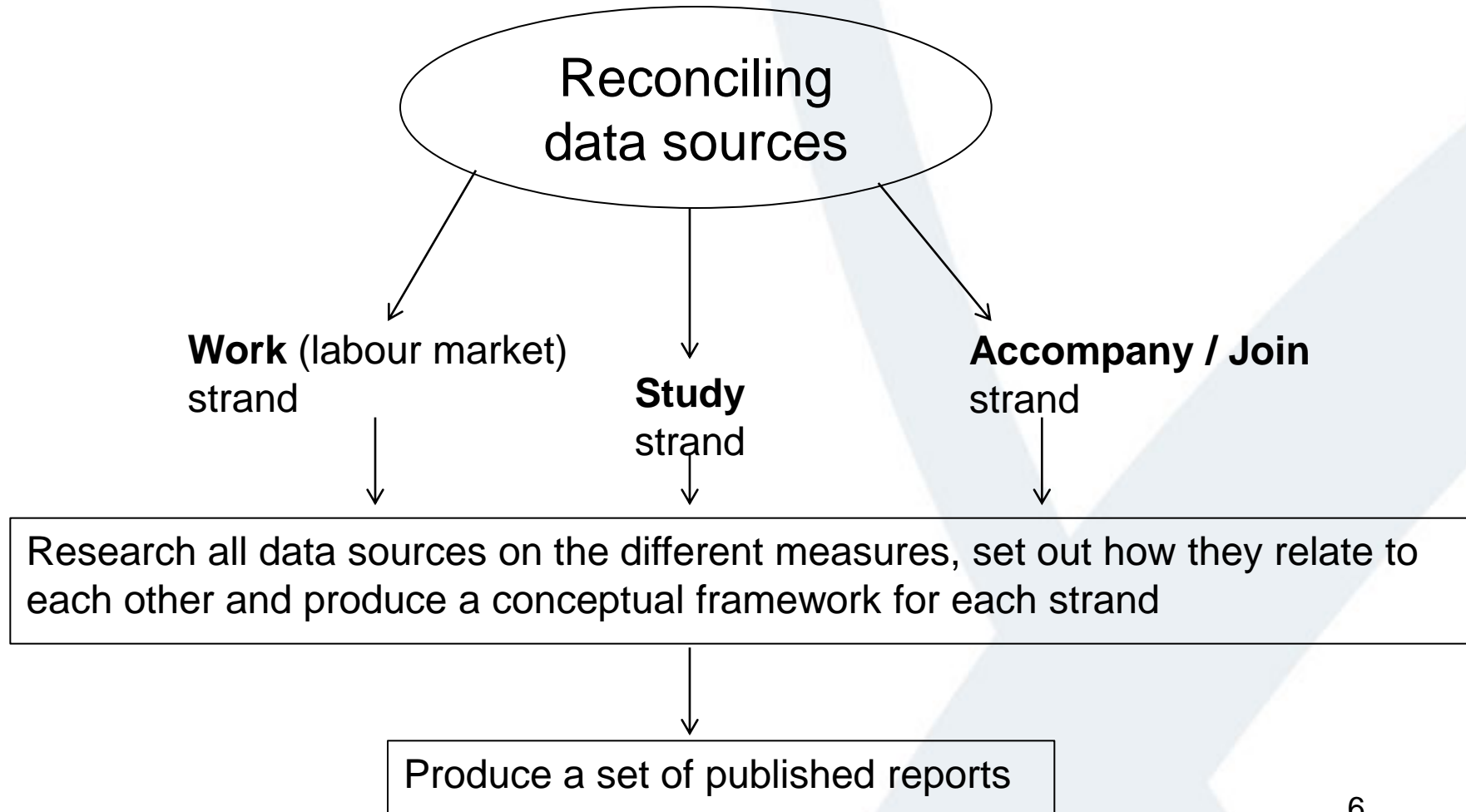
This table is for illustrative purposes only .

A detailed comparison of sources will also include length of time series data available, definitions of migrants, workers and nationality and other categories

# Reconciliation of data sources

---

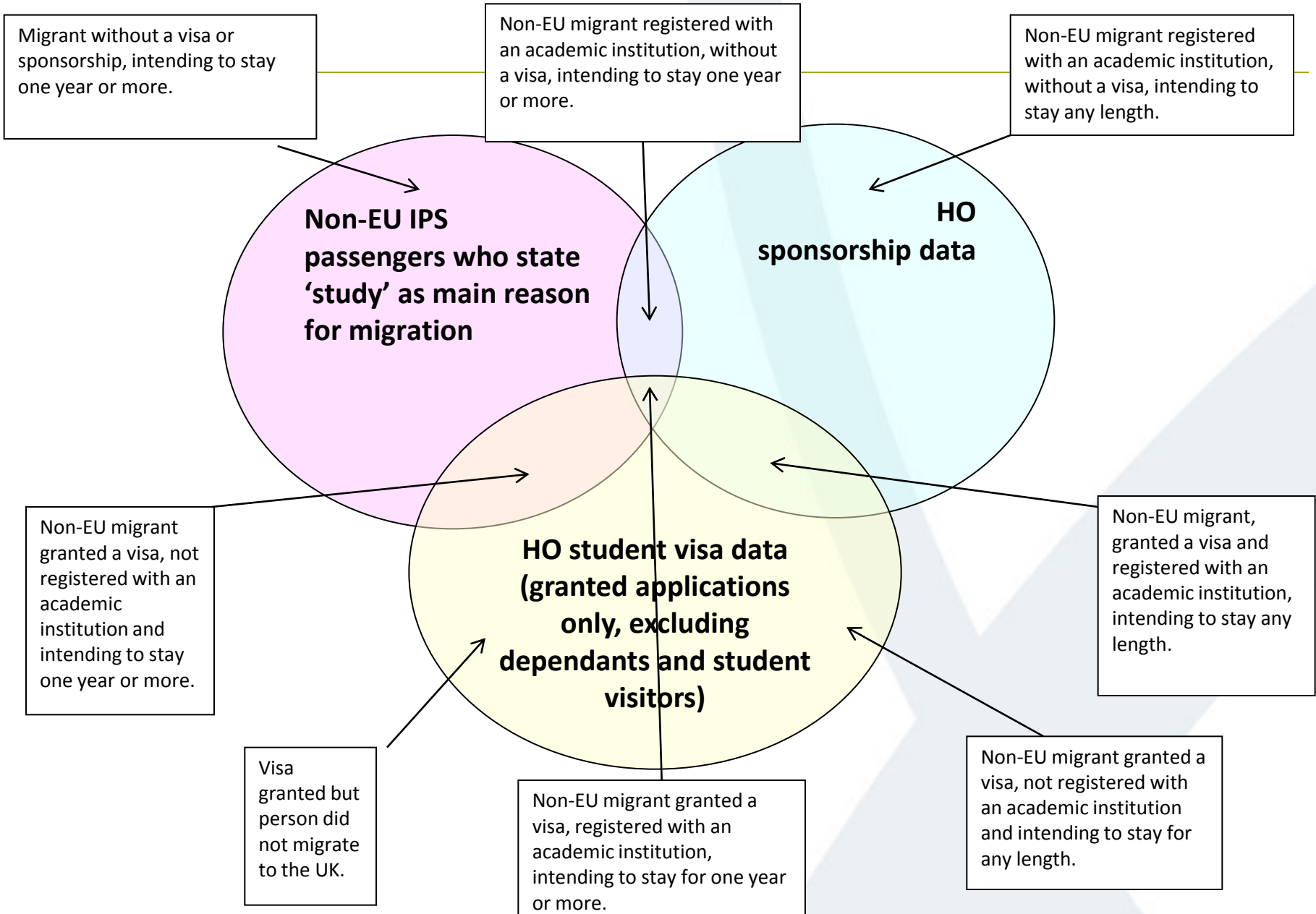
Migration is complex



# Student migration

Comparing immigration of student migrants  
with emigration of former student migrants

# Reconciling student immigration data

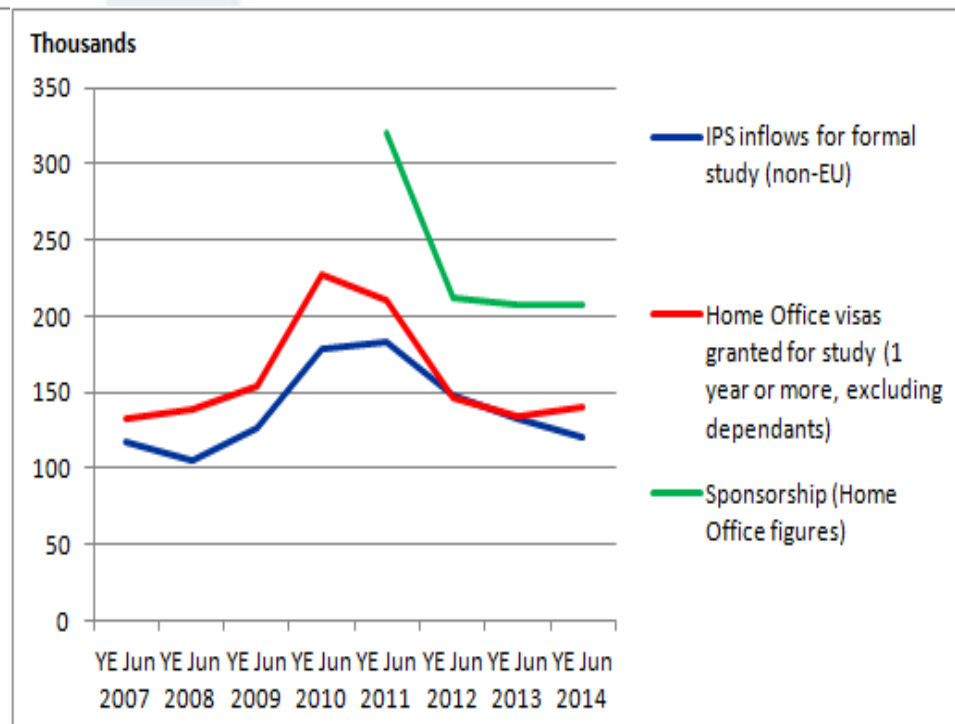
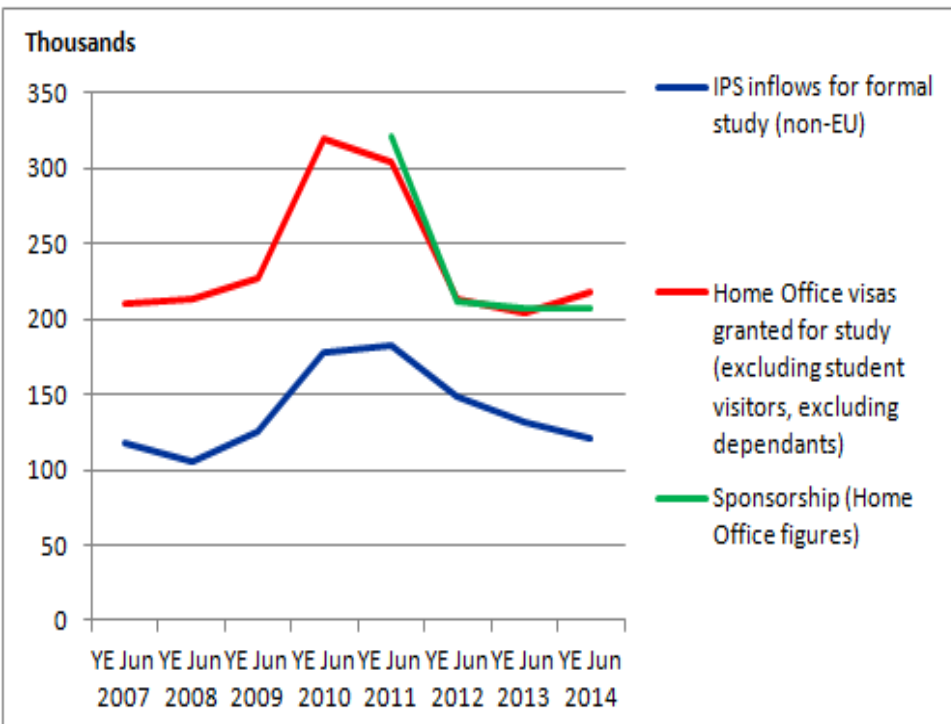




# Reconciling student immigration data

**All** Home Office study visas, compared with non-EU IPS estimates and Home Office sponsorship data (any length of stay)

Home Office study visas granted for **one year or more**, compared with non-EU IPS estimates and Home Office sponsorship data (any length of stay)



# Comparing non-EU students arriving in the UK and the number leaving who originally came to study

	Immigrants - formal study (inflow)	Former immigrants - formal study (outflow)
YE Dec 11	180	
YE Mar 12	163	
YE Jun 12	148	
YE Sep 12	143	
YE Dec 12	139	49
YE Mar 13	132	49
YE Jun 13	132	50
YE Sep 13	123	49
YE Dec 13	122	50
YE Mar 14	123	50
YE Jun 14	120	51
YE Sep 14	132	48
YE Dec 14	134	44
YE Mar 15 <sup>p</sup>	137	41

# Can we explain the gap ?

---

- IPS respondents not accurately recalling that they originally entered the UK as a student.
- Sampling error of the IPS.
- Some students will remain in the UK without a valid visa.
- Timing - those migrants arriving as a long-term international student will not leave until at least a year after arriving and often this will be several years later due to the length of their course.
- Some students could be granted British citizenship or settlement.
- Some students may extend their visas for a variety of reasons.

# Next steps

---

- With the current available data sources it is difficult to draw firm conclusions, further research is required:
  - work with the Home Office on student cohort analysis
  - explore exit check data when available
  - pursue the use of HESA data
  - add new quarterly IPS and visa data so we can build a bigger picture over time

# Labour Market

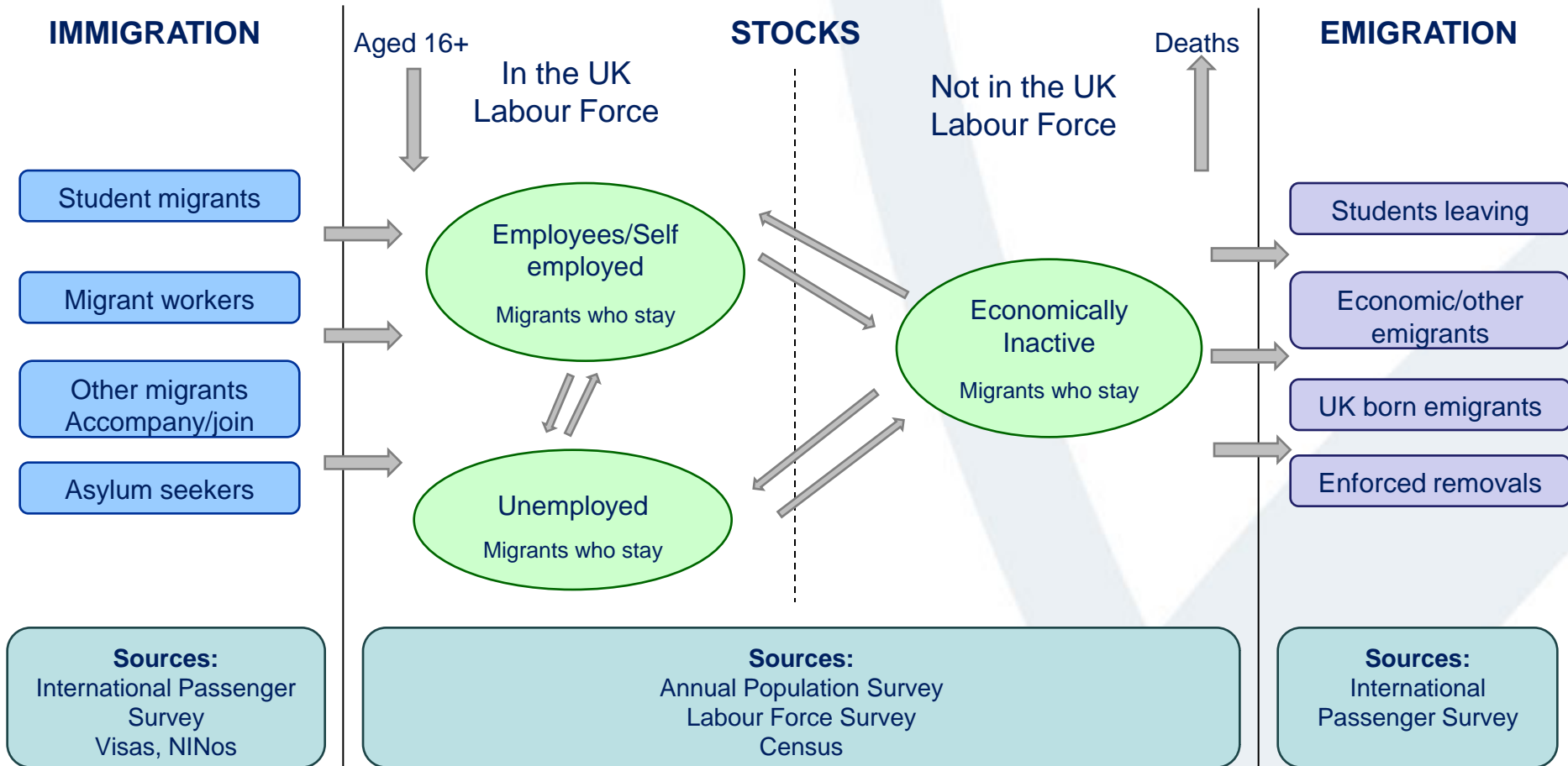
Comparing methods and coverage of  
different sources of data

# Labour market strand

---

- Identify and reconcile data from a range of different sources to gain a fuller understanding of how people migrating to the UK impact the labour market.
- Detailed documentation of the scope, coverage and definitions for each source; and to compare differences, evaluate them and quantify their impact if possible.
- Produce a conceptual framework showing the relationship between sources and how they interact with the labour market.
- Presenting analysis of ‘areas of overlap’ and commonality, where two or more sources measure a comparable migration statistic.

# Labour market diagram



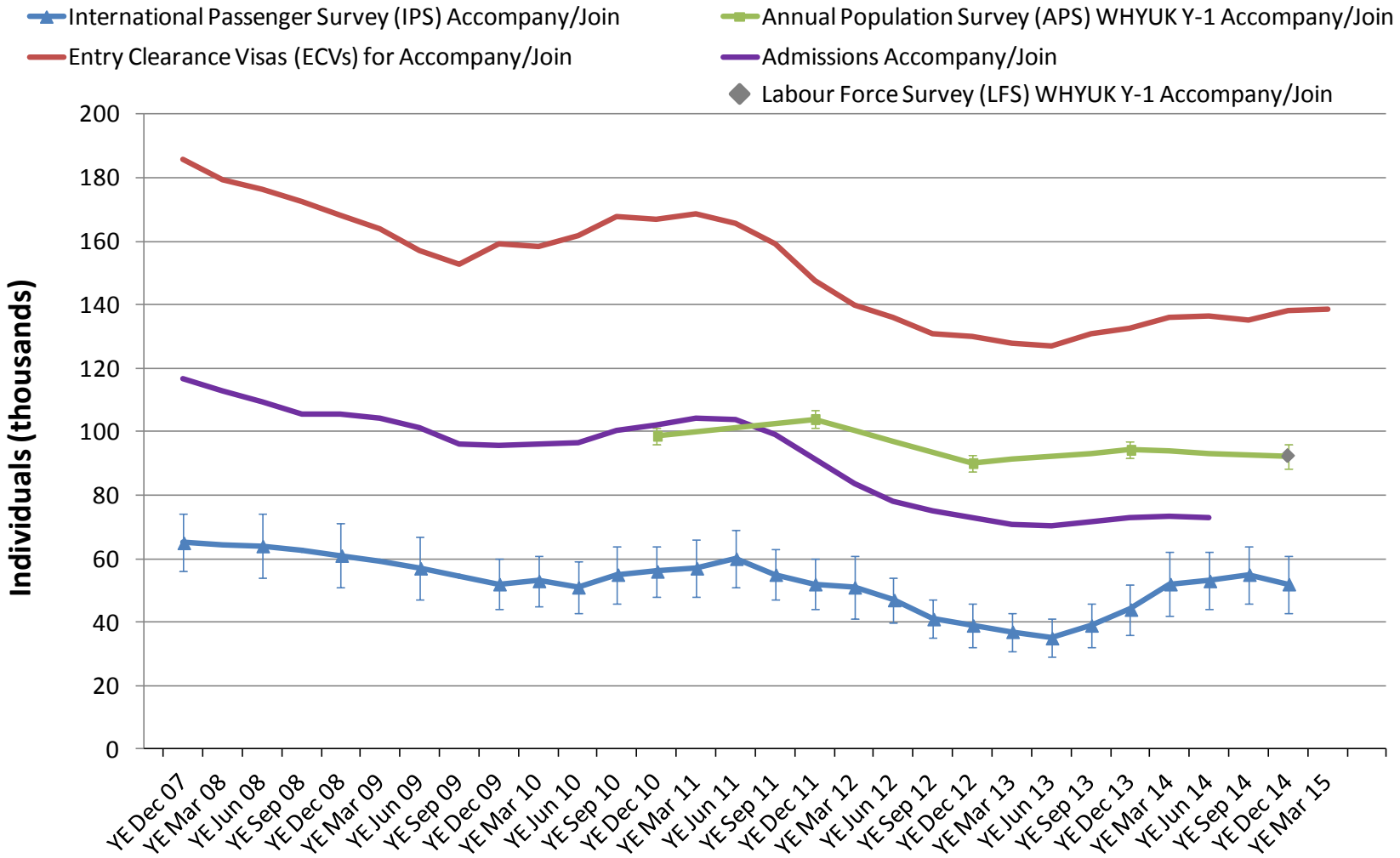
- Unmeasured by LFS:
- Illegal immigrants
  - People living in Communal Establishments
  - Temporary foreign workers
  - Armed forces not living in private accommodation

# **Accompany / Join as a main reason for migration**

IPS and visa comparisons



# Comparing non-EU recent trends for 'Accompany/Join'

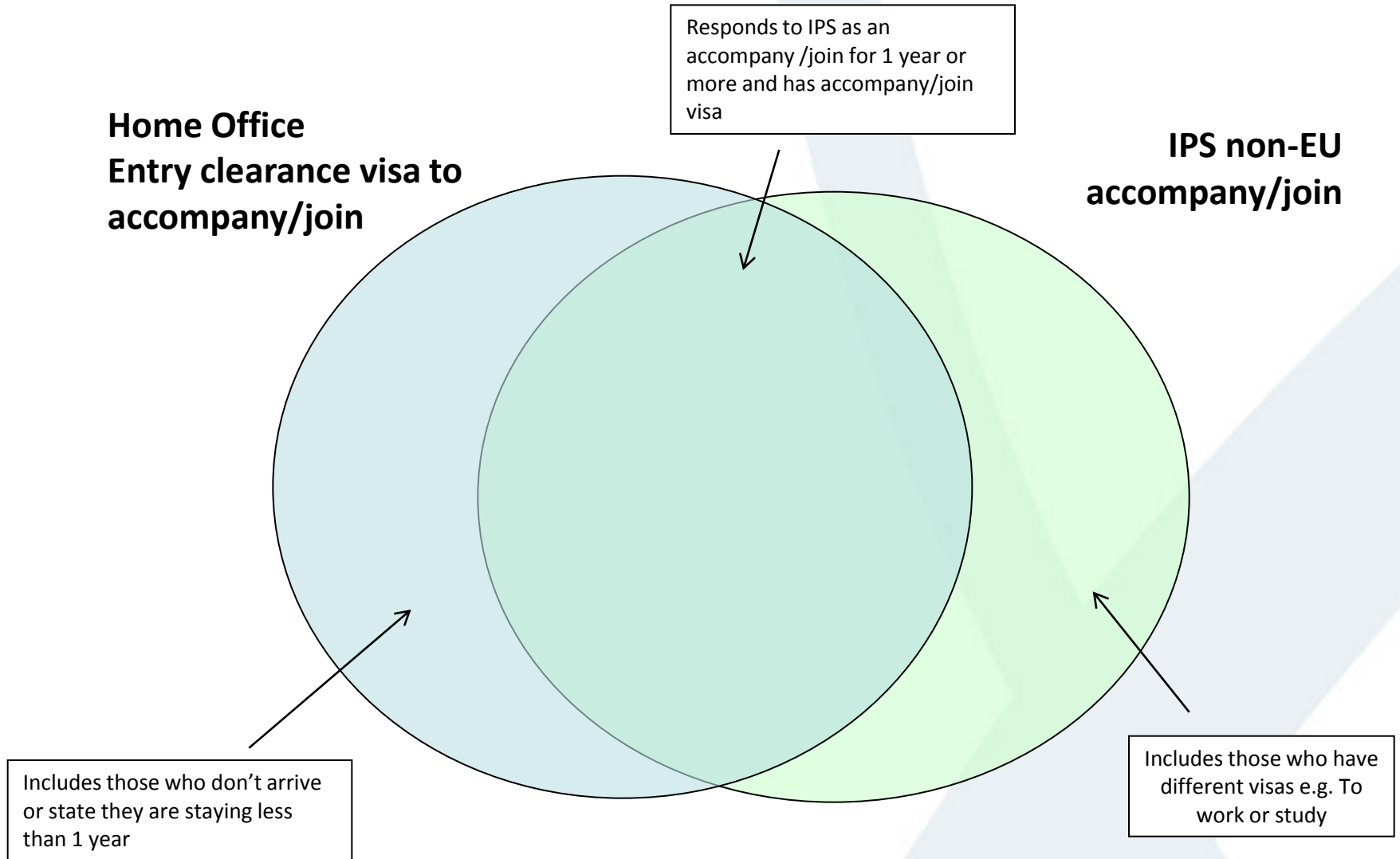


# IPS and Visa differences

---

- Visas
  - Migrant has intention to travel but may not use the visa
  - Visa granted for more than a year but not intending to stay this long
  - Includes short-term migrants
- IPS
  - Based on primary intention reason for migration which may not be equivalent to the visa granted
  - Intend to stay for a year
  - Small sample size

# IPS and Visa conceptual framework



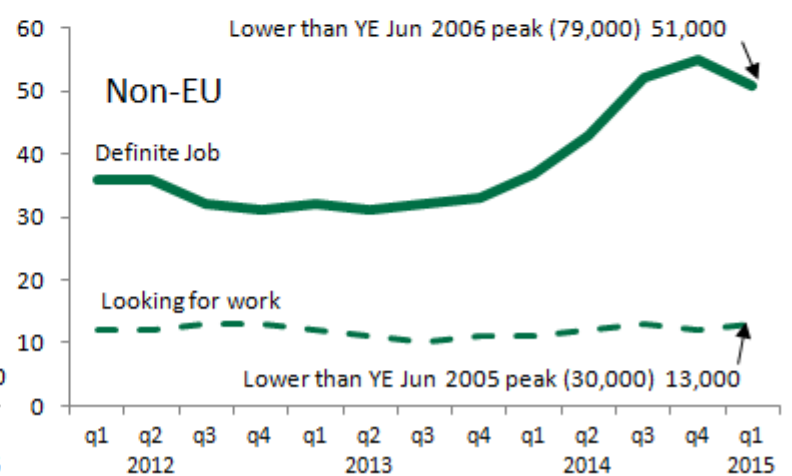
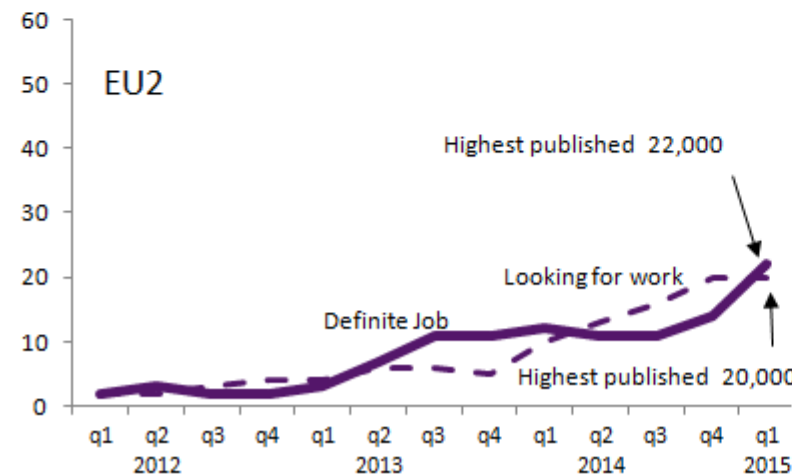
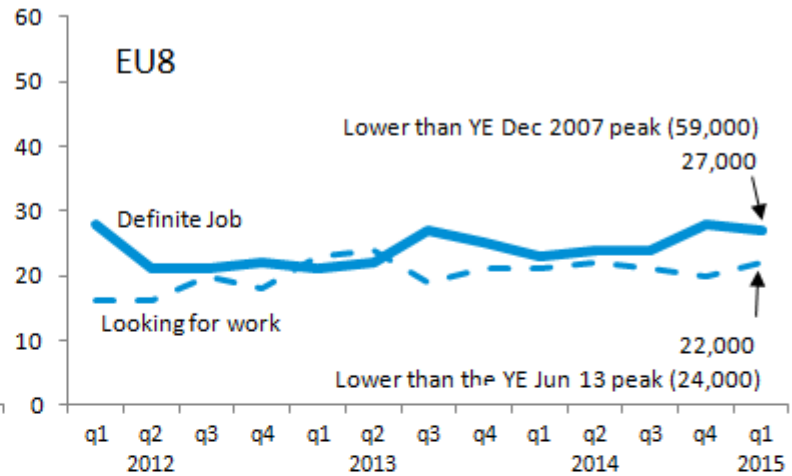
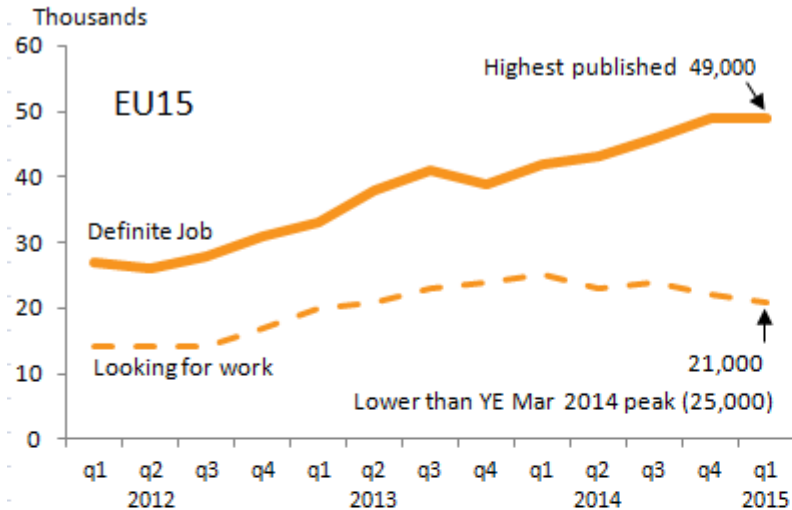
# Recent changes to the MSQR

# Recent changes to the MSQR

---

- To enable a shorter, more flexible MSQR we have:
  - added more clarity to the main points section
  - annotated charts
  - additional tables summarising headline findings
  - spark lines to replace long trend charts
  - removed repetition
  - charts use colour blind / grey scale accessible colours

# Recent changes to the MSQR – spark lines



# Feedback from you

---

- Do you still use the old country groupings or can we drop these tables?
- Would you object to dropping some of the tables from the final tables publication and would you like to include any additional ones?
- Are there any specific topics you would like us to cover as a short story over the next year?

# Any questions?

Migration Statistics Unit  
Tel: 01329 444097  
Email: [migstatsunit@ons.gov.uk](mailto:migstatsunit@ons.gov.uk)  
Twitter: @PaulVickers\_ONS