



Office for
National Statistics

Developments in International Migration Statistics

Pamela Cobb

16 September 2014

Developments in Migration Statistics

- **Developments in data, reporting and quality**
- **Work underway for future developments**
- **Quality of migration estimates**
 - Comparisons with 2011 Census**
 - Revised net migration estimates**

Developments over last 12 months

- Timeliness – LTIM published one quarter earlier from November 2013
- Enhanced Migration Timeline to include EU / Non EU historical patterns
- User guide to Migration Statistics published
- Enhanced information on accuracy of estimates
- Have passed assessment as National Statistics

Developments over last 12 months (continued)

- Research on the quality of international migration estimates
- Short stories published on EU and EU2 (Romania and Bulgarian) migration
- Video podcast published quarterly
- November press conference followed by open presentation (streamed live over internet)

Developments over last 12 months (continued)

- Consultation on country groupings
- Consultation on migration reporting
- Research on quality of non-asylum removals data
- Semaphore (E-borders) research

Progressing work on

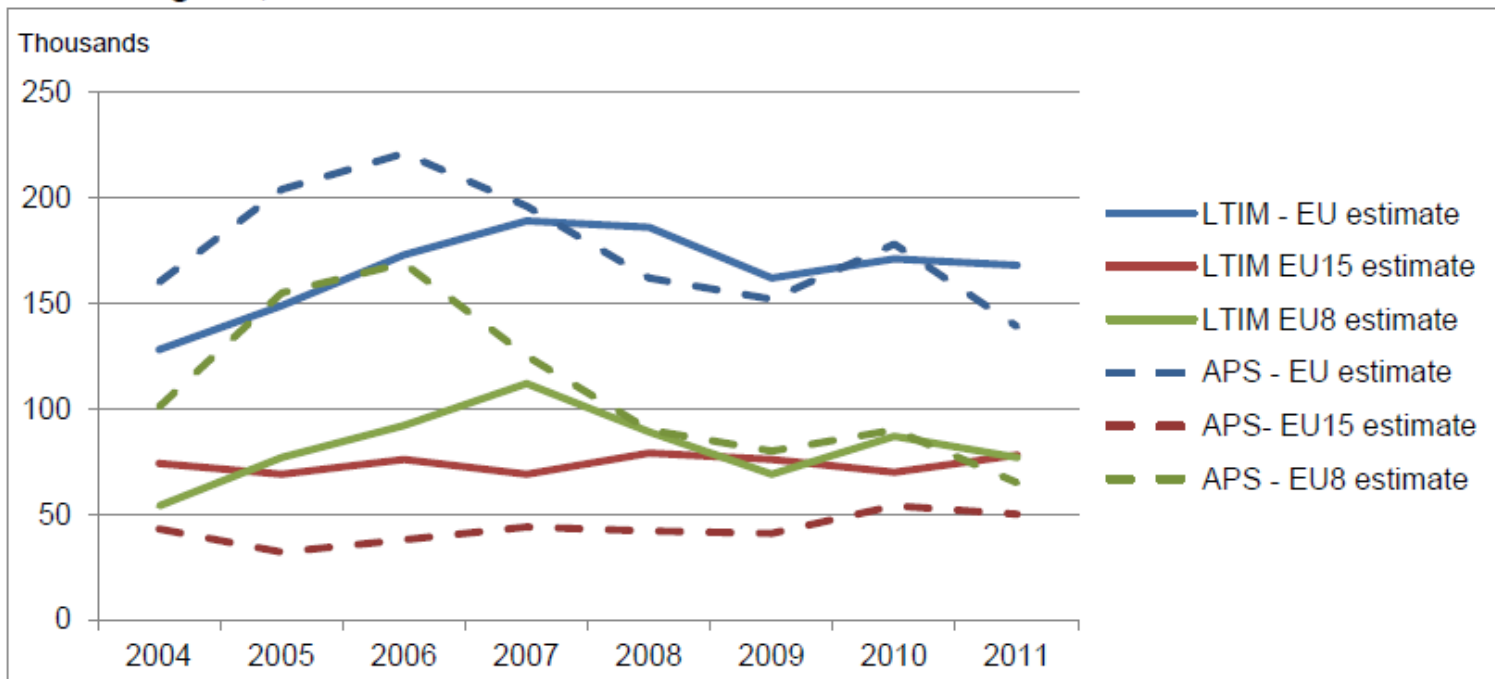
- New country groupings to be available in selected IPS tables from November 2014
- Further developments on outputs
 - Structure / design of MSQR
 - Suite of products
- Inclusion of non-asylum removals data
- Progressing on 'Web Data Access' project – will allow further detailed breakdowns from IPS
- Semaphore report to be published end 2014

Quality of LTIM estimates – in light of 2011 Census – Key Findings

Key findings of review (published April 2014):

- IPS missed migration in 2004-2008 especially of EU8 citizens

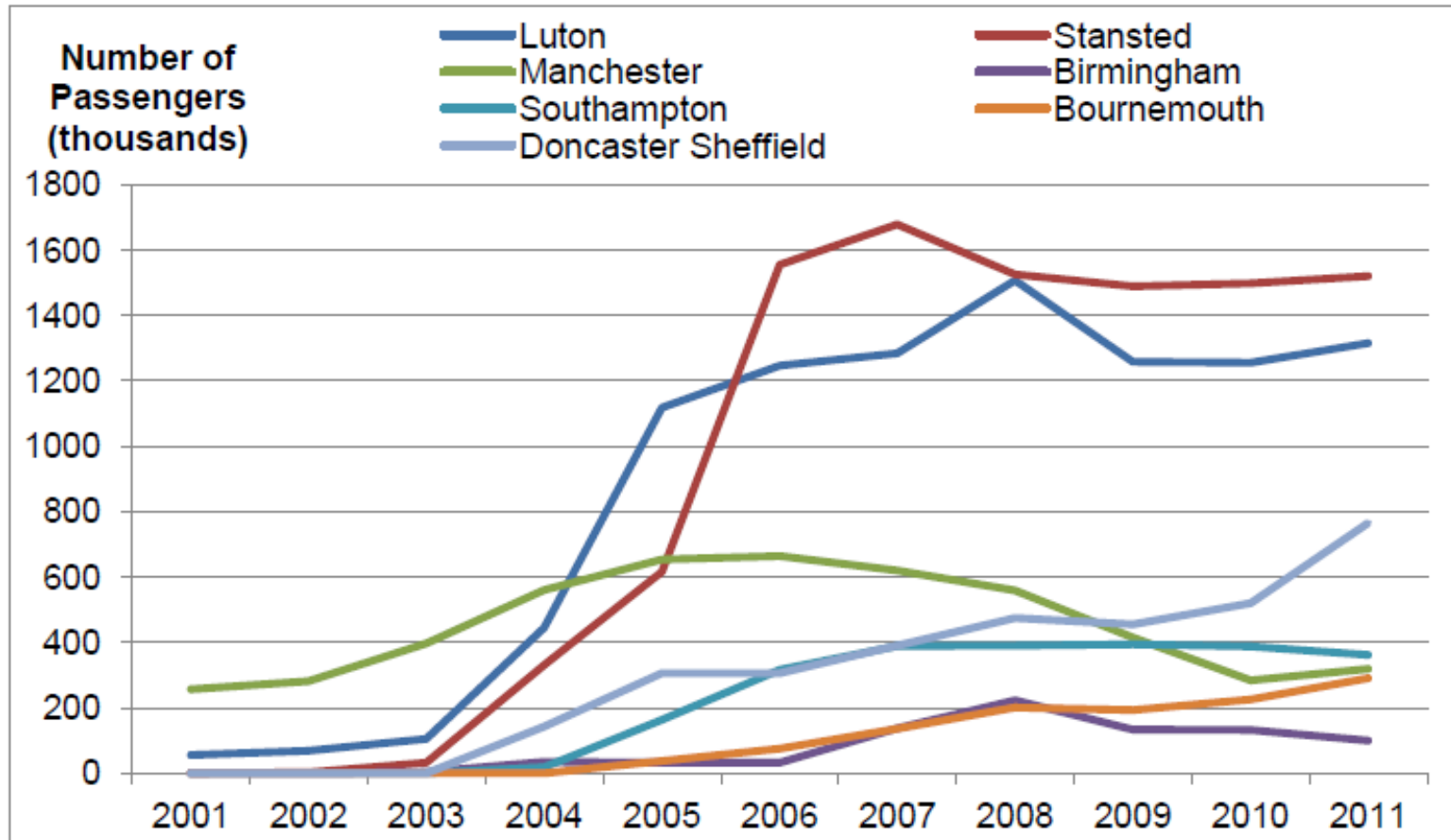
Figure 2.2 Comparison of LTIM immigration estimates and APS implied migration for EU born, United Kingdom, 2004-2011



Source: Office for National Statistics

Key Findings

Figure 3.2 Number of passenger journeys between selected UK airports and EU8 countries, 2001- 2011

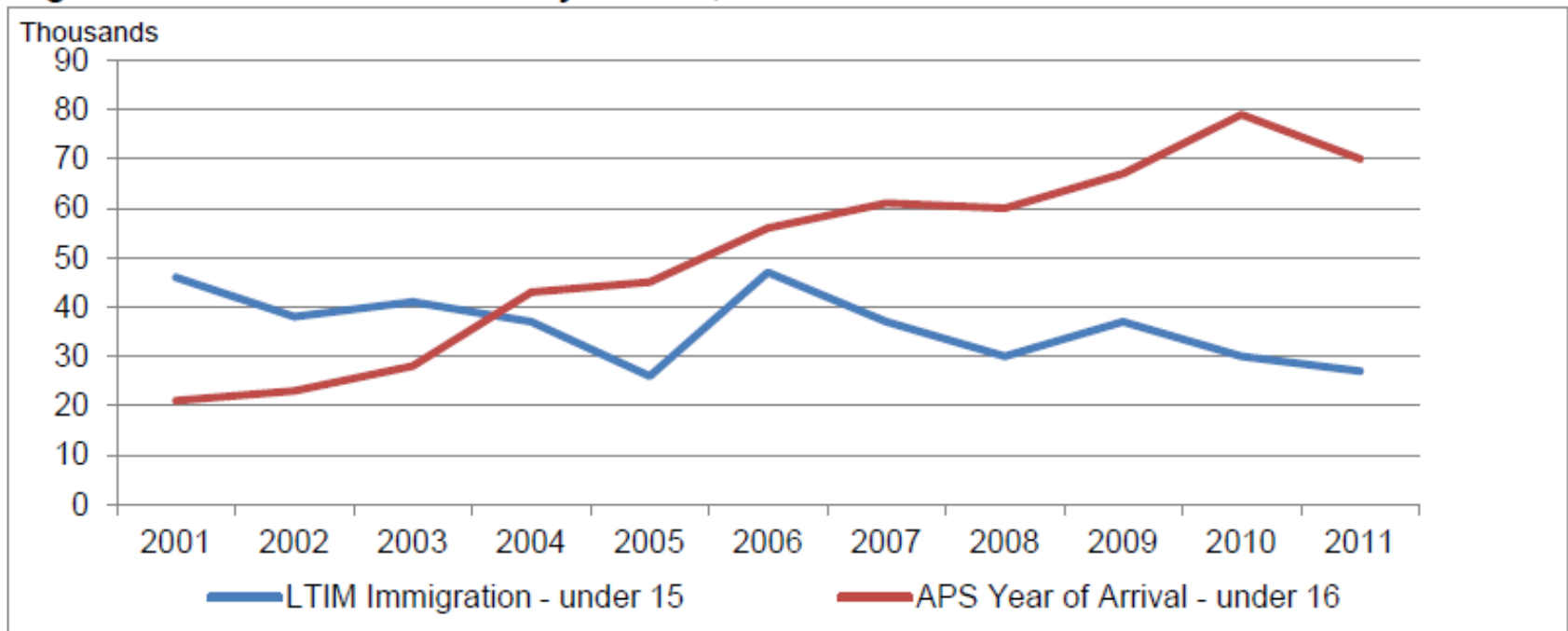


Source: Civil Aviation Authority (CAA)

Key findings

- Some evidence from Census, APS and Flag 4 data that IPS underestimated migration of children

Figure 2.4 Comparison of LTIM immigration estimates for under 15 year olds with APS implied migration estimates for under 16 year olds, 2001-2011

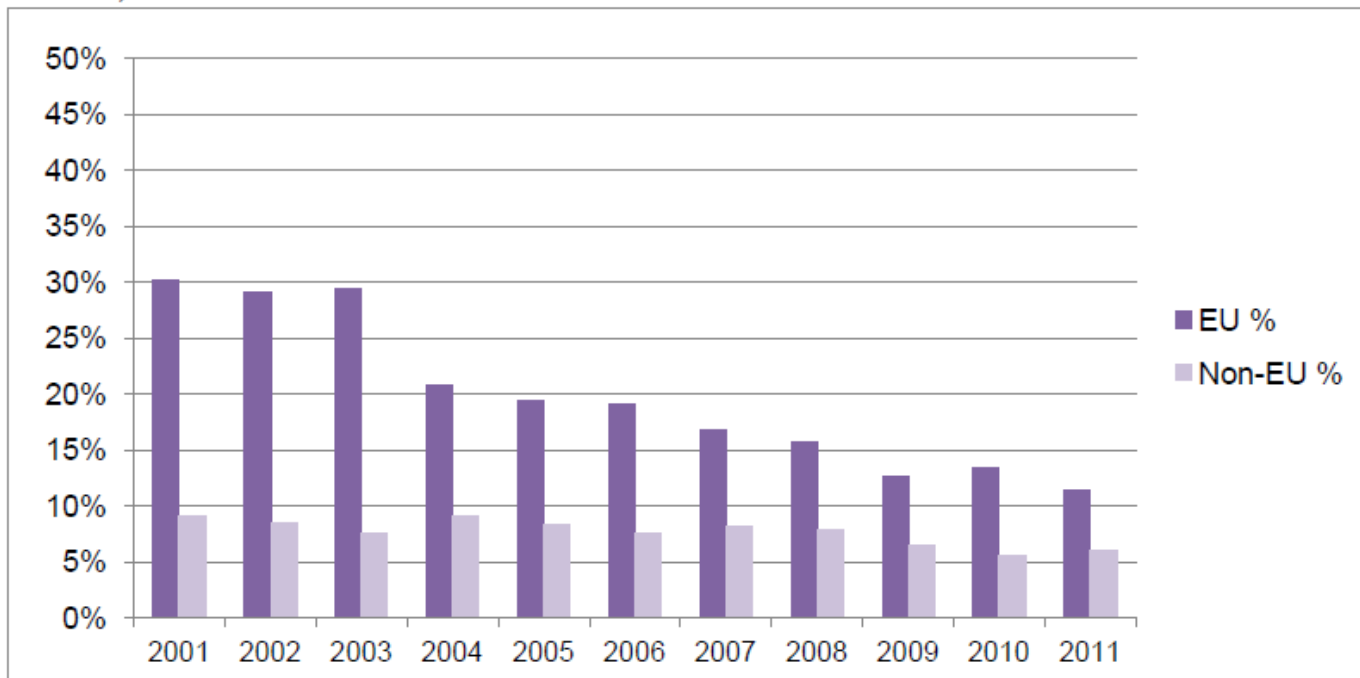


Source: Office for National Statistics

Key findings

- IPS improvements have reduced uncertainty around estimates and improved balance of sample
- No evidence that current LTIM methodology needs adjusting (e.g. Switcher fractions)

Figure 3.5 IPS confidence interval as a percentage of IPS inflow estimates for EU and Non-EU citizens, 2001- 2011



Source: Office for National Statistics

Revised net migration estimates

- Revised net migration estimates for 2001-2011 published
- Fully consistent with results of 2011 Census and previous published mid-year net migration estimates
- Total net migration 346,000 lower than implied by 2011 Census
- Majority of adjustment for 2004-2008 prior to improvements made to IPS

Revised net migration estimates

Calendar year	Revised Net migration estimates	Original Net migration estimates	<i>thousands</i> Difference
2001	+ 179	+ 171	+ 8
2002	+ 172	+ 153	+ 19
2003	+ 185	+ 148	+ 37
2004	+ 268	+ 245	+ 23
2005	+ 267	+ 206	+ 61
2006	+ 265	+ 198	+ 67
2007	+ 273	+ 233	+ 40
2008	+ 229	+ 163	+ 66
2009	+ 229	+ 198	+ 31
2010	+ 256	+ 252	+ 4
2011	+ 205	+ 215	- 10

Source: ONS

Guidance for users

- Table 1 in Migration Statistics Quarterly Report
- Tables updated with revised estimates
- Guidance note published
- No further breakdowns of revised figures
- Revisions to estimates for 2010 onwards are small and within confidence intervals

Migration Reporting Consultation

Key Outcomes of consultation:

- Shorter, more flexible MSQR
- Add more on uncertainty of estimates
- Pre-announce short stories where possible
- More on local area/short-term migration data
- Web page linking to all migration data
- Suite of products

Migration Reporting Consultation

- **Consultation response – Sept/Oct 2014**
 - Mocked up version of August MSQR
 - Includes feedback from Good Practice Team
 - Work within ONS to develop more migration products for Theme page
- Implement changes in November 2014 MSQR