



National historic environment datasets for woodland creation

For National Historic Environment Record (HER) Forum Meeting
14 December 2022

David Robertson and Tom Sunley

Background, policy, strategy

CLIMATE CHANGE

BIODIVERSITY CRISIS

MULTIPLE BENEFITS OF TREES

GOVERNMENT TARGETS FOR WOODLAND
CREATION **Woodland cover 10 > 12%**

Concerns: impact on historic features and
historic landscapes

Right tree in the right place: *UK Forestry
Standard*

Designated heritage assets datasets online

Non-designated heritage assets

- Current UKFS and EIA (forestry) regulations require proposers to contact local historic environment services
- Pitfalls of online datasets



'National historic environment datasets for woodland creation' project

4.6. Explore improving access to historic environment data, aiding faster assessment of woodland creation proposals;

Under ETAP action 4.6 and NCF Planting on Private Land Project, the Forestry Commission has secured funding for a 3-year project to improve access to historic environment data.

It will:

- Increase confidence and certainty for proposers
- Support faster assessment of woodland creation proposals
- Support delivery against government targets
- Address an identified barrier to woodland creation
- Improve Forestry Commission customer service
- Reduce the number of inappropriate proposals



'National historic environment datasets for woodland creation' project

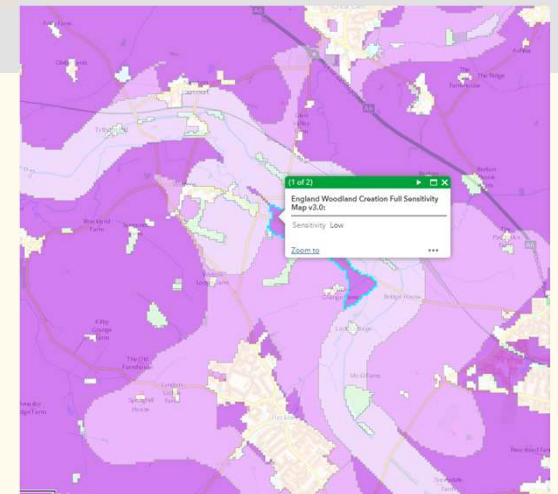
4.6. Explore improving access to historic environment data, aiding faster assessment of woodland creation proposals;

Currently under development, but potentially aims to:

- Improve the methodology and coverage of the Selected Heritage Inventory for Natural England (SHINE), so SHINE data can be used to inform woodland creation
- Publish online a historic environment targeting/opportunity map for afforestation
- Feed historic environment data into the Forestry Commission's existing woodland creation sensitivity maps <https://www.forestergis.com/Apps/MapBrowser/>

Informed by:

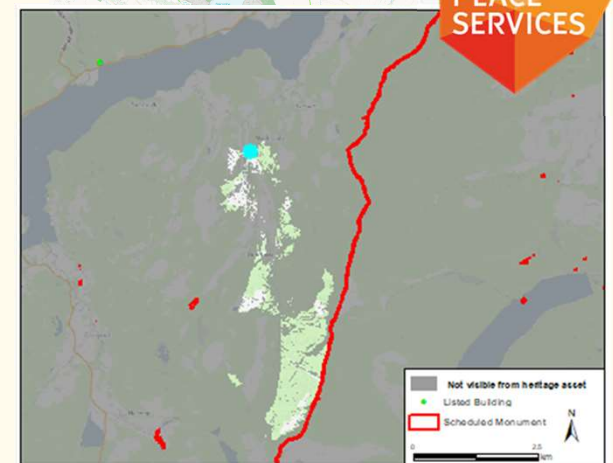
- Pilot historic environment data projects by the Forestry Commission 2021-22
- Stakeholder engagement inc. ALGAO, NE & HE



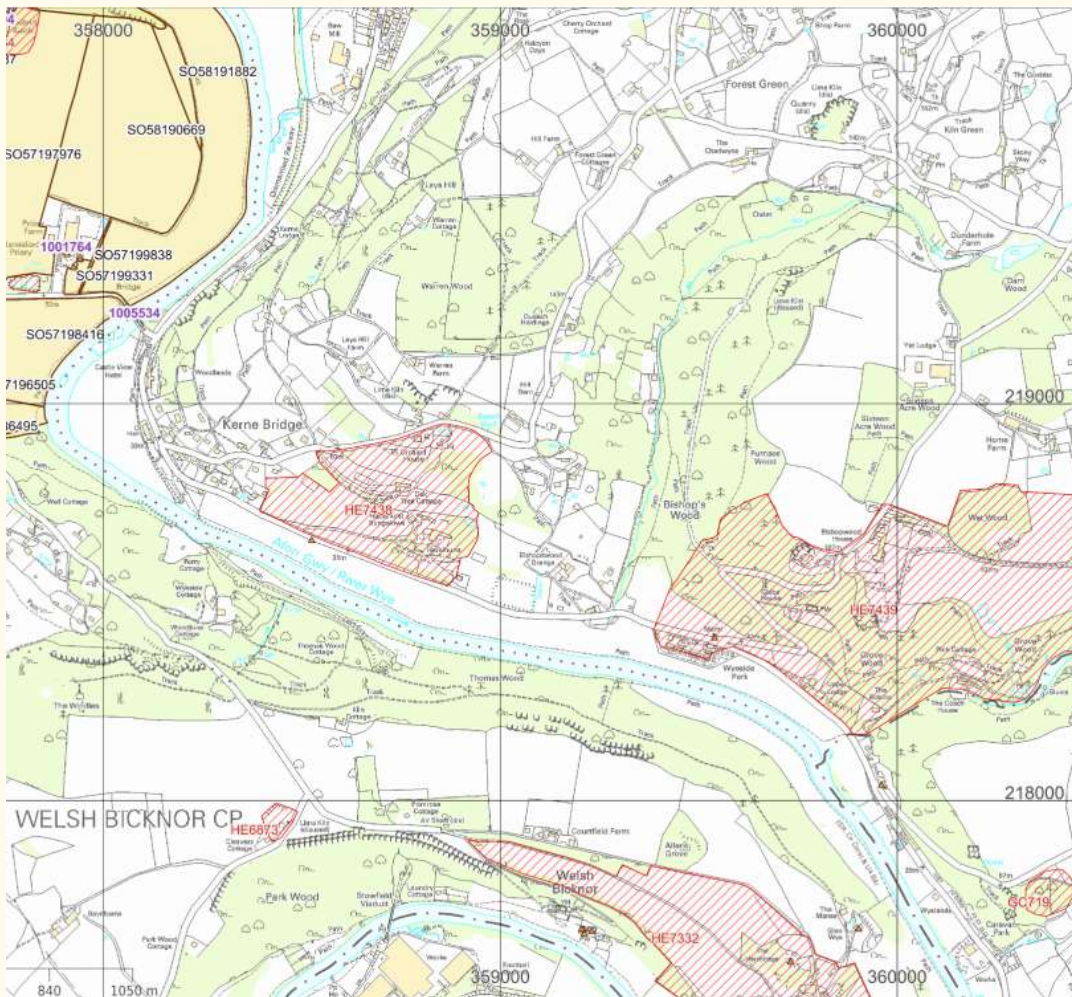
Historic environment data pilots

4.6. Explore improving access to historic environment data, aiding faster assessment of woodland creation proposals;

- A. Assessing the use of GIS to map zones of woodland creation sensitivity around designated heritage assets
- B. Assessing the use of GIS to produce woodland creation historic environment opportunity/targeting maps
- C. Forestry Commission using a Historic Environment Record GIS data extract to inform decisions on Woodland Creation Planning Grant applications in Northumberland and Devon
- D. Assessing the use of artificial intelligence to identify and record ridge and furrow earthworks



Evolve and improve Selected Heritage Inventory for Natural England (SHINE)



SHINE data currently accessed in the HEFER portal and HEFERs for CS Schemes

Not suitable to inform woodland creation

- Polygon standards
- Limitations on range of sites represented
- Variability of coverage
- Lack of currency

Modifications

- Full coverage & full sign-up
- New categories for date & type
- Regular updates
- Funding



FC interest: SHINE in woodland creation

Build (and improve?) on the existing dataset

- Nationally consistent dataset of non-designated heritage assets
- Since 2008 over £3.5 million of public money invested in SHINE (Natural England, Historic England, RPA, DEFRA)
- SHINE already used in E.L.M (SFI, spatial prioritisation)
- DEFRA Sec. of State 04/12/22: LNR to become 'enhanced version of Countryside Stewardship' (=> SHINE & HEFERS?)
- Further DEFRA announcement on E.L.M. expected January 2023

Collaboration

- Steer from ALGAO UK, including ALGAO, Countryside committee & HER committee: **'potential for improvements'**
- Support from Natural England, Historic England and project advisory group



FC interest: SHINE in woodland creation

Ministerial decision July 2022

EWCO part of E.L.M. from 2025

Possible options for access

- Forestry Commission staff through internal GIS systems (web browser and ArcGIS)
- E.L.M. delivery mechanism
- Online portal that needs registration

Not looking to publish SHINE data as open data online

- Data ownership and licencing
- Wouldn't expect ALGAO support
- Want to keep ALGAO members involved in woodland creation process

Historic Environment Farm Environment Record (HEFER) Portal

Skip to main content Login

Home Retrieve HEFER Look up a Record Guidance Contact

Please note: if you need to request a HEFER for your MT online application, please go to <https://hefer-data.org.uk/>

From February 2022 all **Mid Tier online CS customers** need to request a CS HEFER from the HEFER self service portal. MT online customers should register to use the HEFER self service portal and can request a CS HEFER by submitting their SBI. Customers will receive an email to let them know when their CS HEFER is available, or they can check for available CS HEFERs here.

For **Higher Tier CS customers**, and **Mid Tier CS customers who have requested an application pack from RPA by telephone**, the process has not changed and RPA will request a HEFER on your behalf.

For **local authority and Historic England consultees** the process has not changed, so please continue to use this website to submit your responses in line with the Historic Environment Farm Environment Record (HEFER) service standard.

All general Countryside Stewardship queries should be directed to ruralpayments@defra.gov.uk Telephone 03000 200 301 (Opening times: 8.30am to 5pm Monday to Friday).

If you have a Natural England adviser please contact them for Higher Tier application and agreement queries.

Association of Local Government Archaeological Officers (ALGAO) members should check the Countryside Committee webpage for updates and send any queries to HER support on the Contact page.

Historic England & Natural England advisers should address any issues to the relevant help address on the Contact page.

Any outstanding queries regarding HEFER payments should be sent to enquiries@naturalengland.org.uk and copied to ruth.beckley@cambridgeshire.gov.uk.

This website no longer supports Internet Explorer 11, so for the best experience please use Edge, Chrome or Firefox.

Last Modified: Jun 27, 2022

Department for Environment Food & Rural Affairs Historic England Association of Local Government Archaeological Officers



National HE datasets for afforestation

4.6. Explore improving access to historic environment data, aiding faster assessment of woodland creation proposals;

Project development and governance

Three year project: 2022-23 to March 2025

Advisory group: HE, NE, ALGAO, WCPs, Confor

SHINE-enhancement group: HE, NE and ALGAO

Continued stakeholder engagement

Potential for ALGAO SHINE enhancement coordinator post from 2023+

Funding

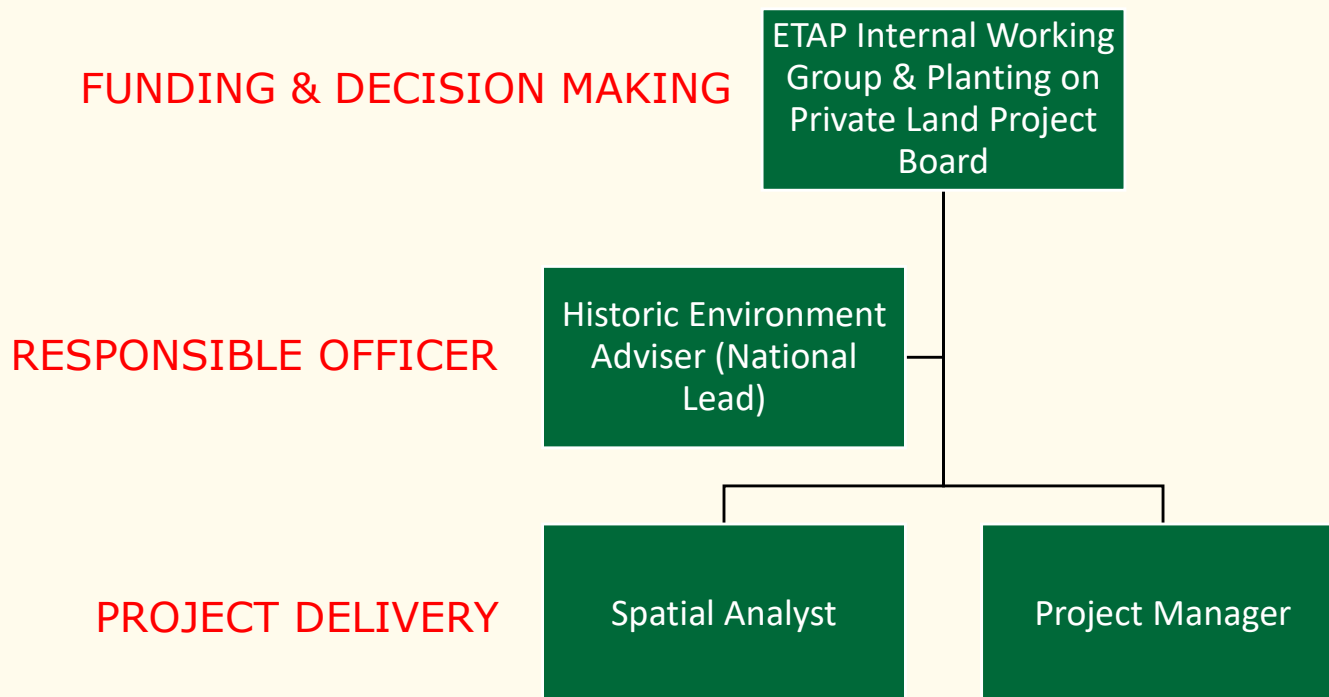
2022-23 £140k for digitisation and to support ALGAO members

2023-25: £560k ALGAO members, £150k IT



Forestry Commission project staff

- All staff funding secured until project completion in March 2025
- Project Manager (Tom Sunley) started in post on 31/10/2022
- Spatial Analyst (TBA) due to start in post in January 2023



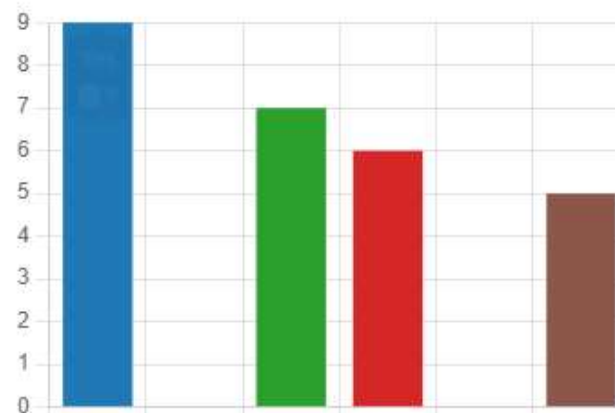
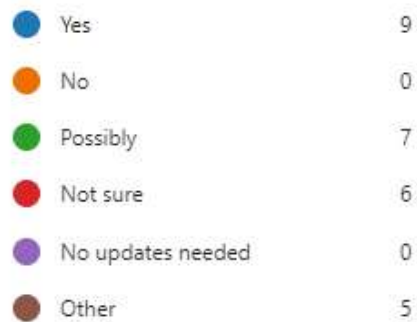
Second ALGAO workshop: 07/09/2022

- Workshop with Local Authority Historic Environment Services
- Update on project aims and potential route map
- Successful workshop improved links with key partners
- Questionnaire posed 6 key questions and 23 responses from total of 66 participants
- Mandate for projects in 2022-23 – 22 out of 23 supported research into SHINE evolution (1 respondent didn't vote)

3. If the SHINE methodology was updated appropriately, would your organisation support its use in woodland creation proposals?

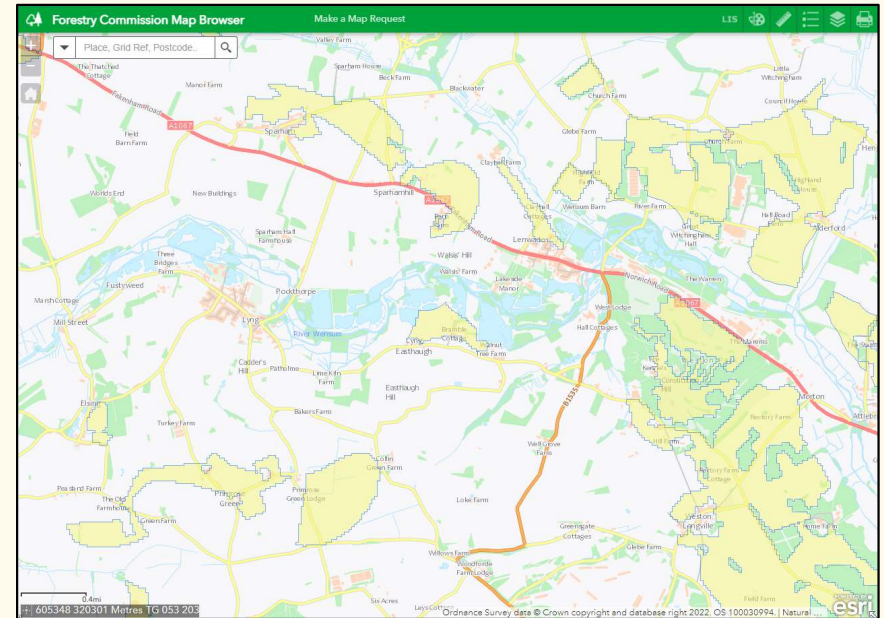
[More Details](#)

[Insights](#)



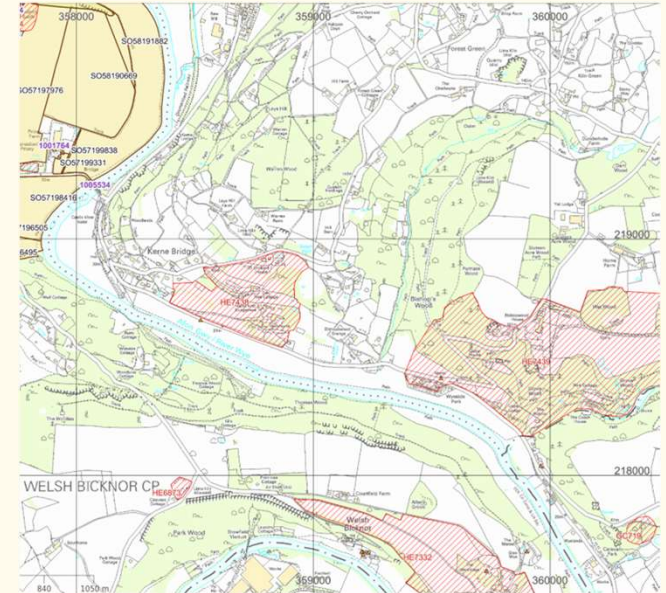
Project E: Research into SHINE evolution

- Based on Local Historic Environment Services creating SHINE data and considering how to evolve it for woodland creation
- 5 Project Partners signed up and funded for £65.5K
- Starting end of November 2022 and finishing March 2023
- Mainly targeting 'Low Risk for Woodland Creation' areas but other areas of added value
- Data, findings, recommendations and feasibility to be shared with FC and inform forward progress



Project F: Views of SHINE users & creators

- Based on consultant engaging with users and creators of SHINE data for forestry and land management schemes – focus on necessary improvements and modification
- Consultant TBA & indicative cost of £22K, decision 02/12/22
- Starting December 2022 and finishing March 2023
- Workshops, interviews, methodology deep dive
- Prioritised recommended changes with feasibility scoped
- Combined with Project E hoping will support a national roll out an agreed modified SHINE dataset



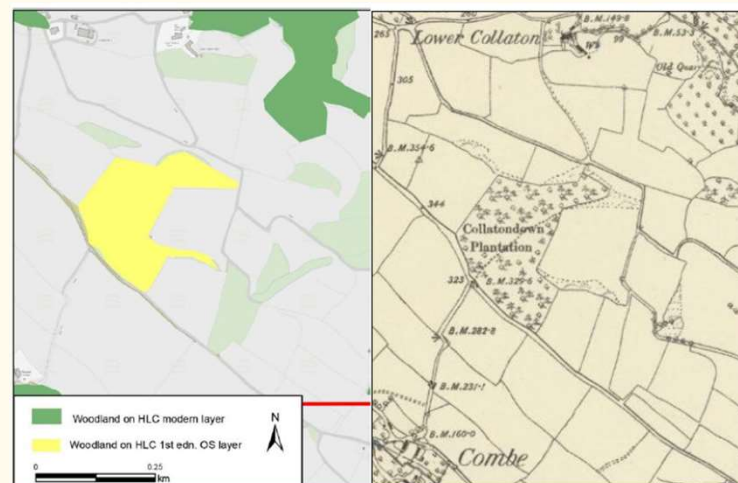
Project G: National ridge & furrow dataset

- Based on consultant creating a national dataset of ridge and furrow from lidar data using AI/machine learning techniques
- Invitation to quote issued
- Consultant TBA & indicative cost of £30K, decision 06/01/23
- Starting January 2022 and finishing March 2023
- Forestry Commission will have access to this dataset in Forester GIS and ArcGIS Pro
- Use in project's opportunity and sensitivity mapping



Project H: Lost historic woodland dataset

- Based on consultant creating a national dataset of lost woodland from C19/C20 historic OS maps using AI/machine learning techniques
- Invitation to quote prepared
- Consultant TBA & indicative cost of £20K, decision 06/01/23
- Starting January 2022 and finishing March 2023
- Forestry Commission will have access to this dataset in Forester GIS and ArcGIS Pro
- Use in project's opportunity & sensitivity mapping



Decision on SHINE evolution (April 2023)

- Hoping projects E & F provide evidence base and recommendations to support evolution of SHINE
- If so, with HE, NE & ALGAO, FC to commission alterations to the SHINE methodology and metadata in-line with creator/user input
- National roll out of 'new' SHINE data creation by local HESs from 2023 through to March 2025
- Datasets combined to create and publish opportunity/targeting & sensitivity maps (inc. from projects G & H and SHINE)

