



# HS2

## An update on the archaeology of Britain's new high speed railway

Jon Millward, Heritage Advisor, HS2 Ltd and Suzy Blake, HER Officer, Staffordshire  
County Council  
4<sup>th</sup> December 2018

# HS2: the backbone of Britain's rail network



- ○ ○ Destinations served by HS2
- HS2 line (Phase One - Completed 2026)
- HS2 line (Phase 2a - Completed 2027)
- HS2 line (Phase 2b - Completed 2033)
- HS2 services on existing network

Based on current indicative train service specification.  
Final HS2 timetable subject to consultation.



**HS2 vision:**

**To be a  
catalyst for  
growth  
across Britain**





# HS2 strategic goals



Catalyst for growth



Capacity & connectivity



Value for money



Customer experience



Skills and employment



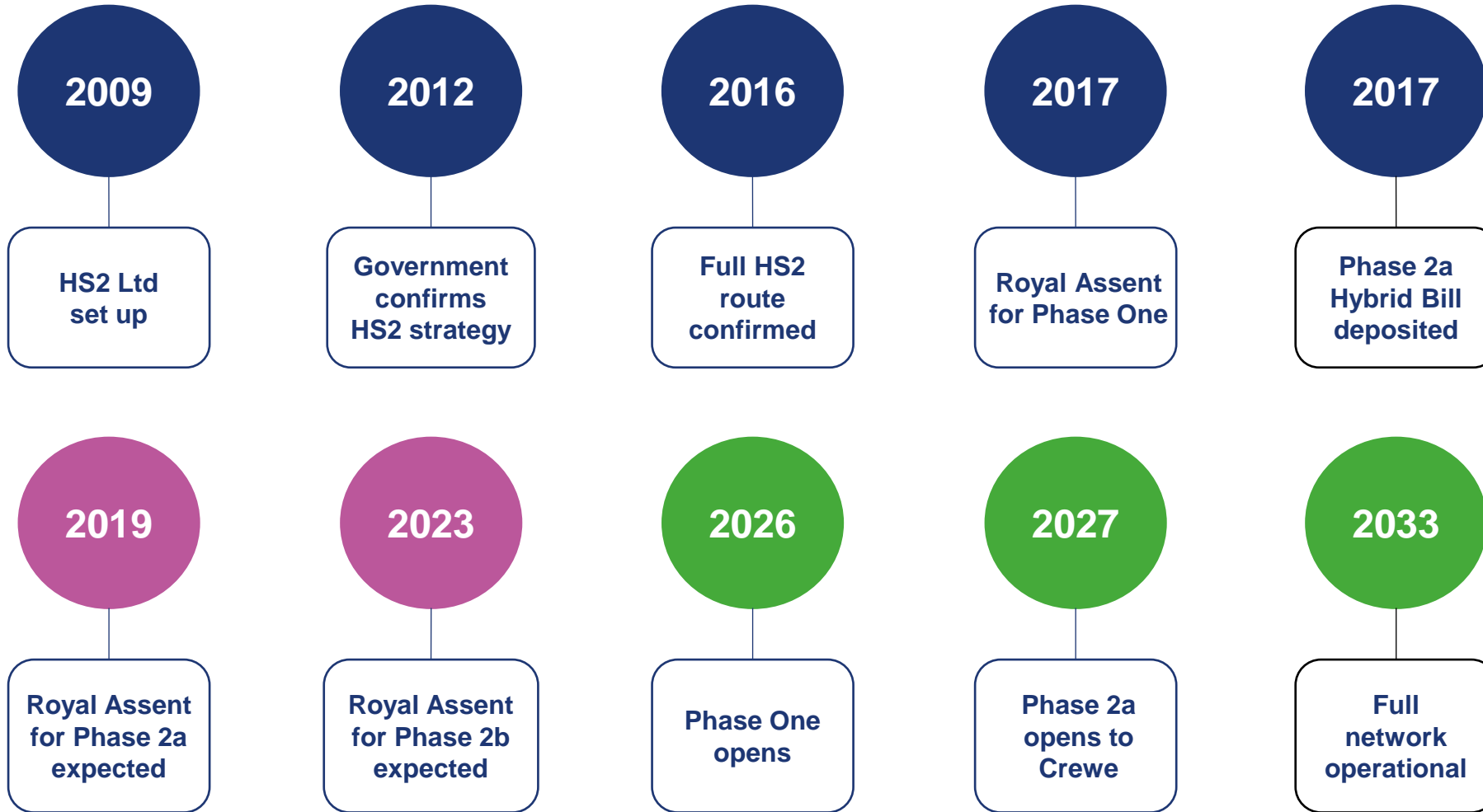
Health, safety & security standards



Sustainable & a good neighbour



# HS2 project timeline



# GWSI: HERDS – An Overview

- Provides a platform for archaeological and heritage works to be designed
- It is designed to maximise efficiencies and Public Benefit
- HERDS justifies the mitigation on the basis of ‘advancing understanding’
- A question-led approach to archaeology and heritage
- A range of specific objectives focusing on skills, employment and education; community engagement; and knowledge creation



# Heritage Works Progress: Introduction

Extensive heritage works are ongoing along the route.

Phase One of HS2 is broken down into three sectors:

- Area South,
- Area Central,
- Area North



# Community Engagement



- Heritage Open Days at Curzon Street, Euston and Stoke Mandeville
- Projects in Area South include setting recording and grave stone recording
- Projects in Area Central focusing on St Mary's, Stoke Mandeville
- Projects in Area North include works relating to Park Street burial ground and Washwood Heath
- Oral History Project, with The Decorators

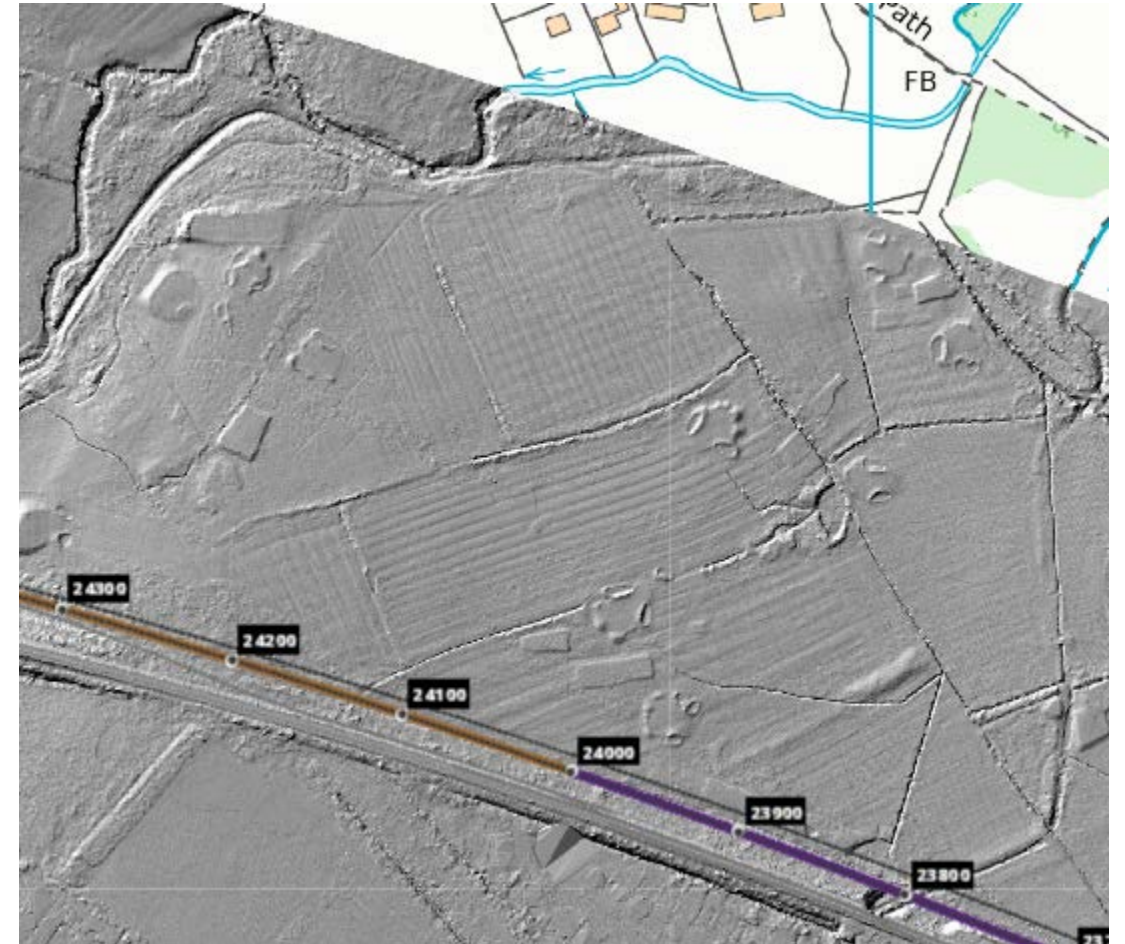




# Area South: Non-Intrusive Surveys

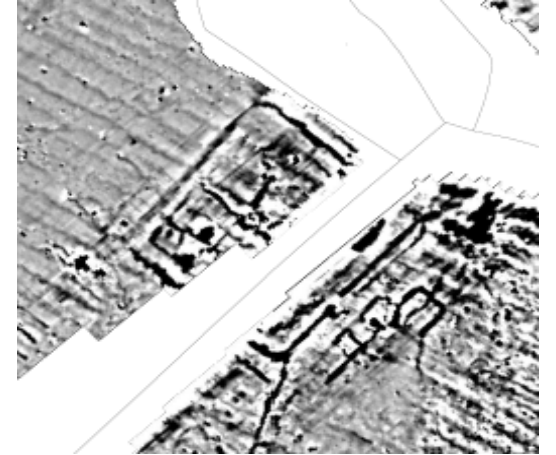
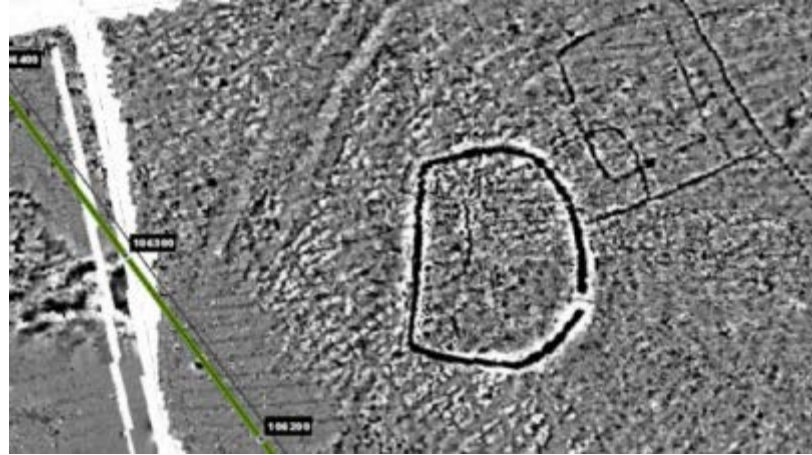
Due to the urban character of most of Area South only limited areas of geophysical survey have been undertaken

However, LiDAR and Hyperspectral surveys were undertaken along the entire length of Phase One of HS2 and have identified a range of heritage assets (such as this area of ridge and furrow fields on Ruislip Golf Course)



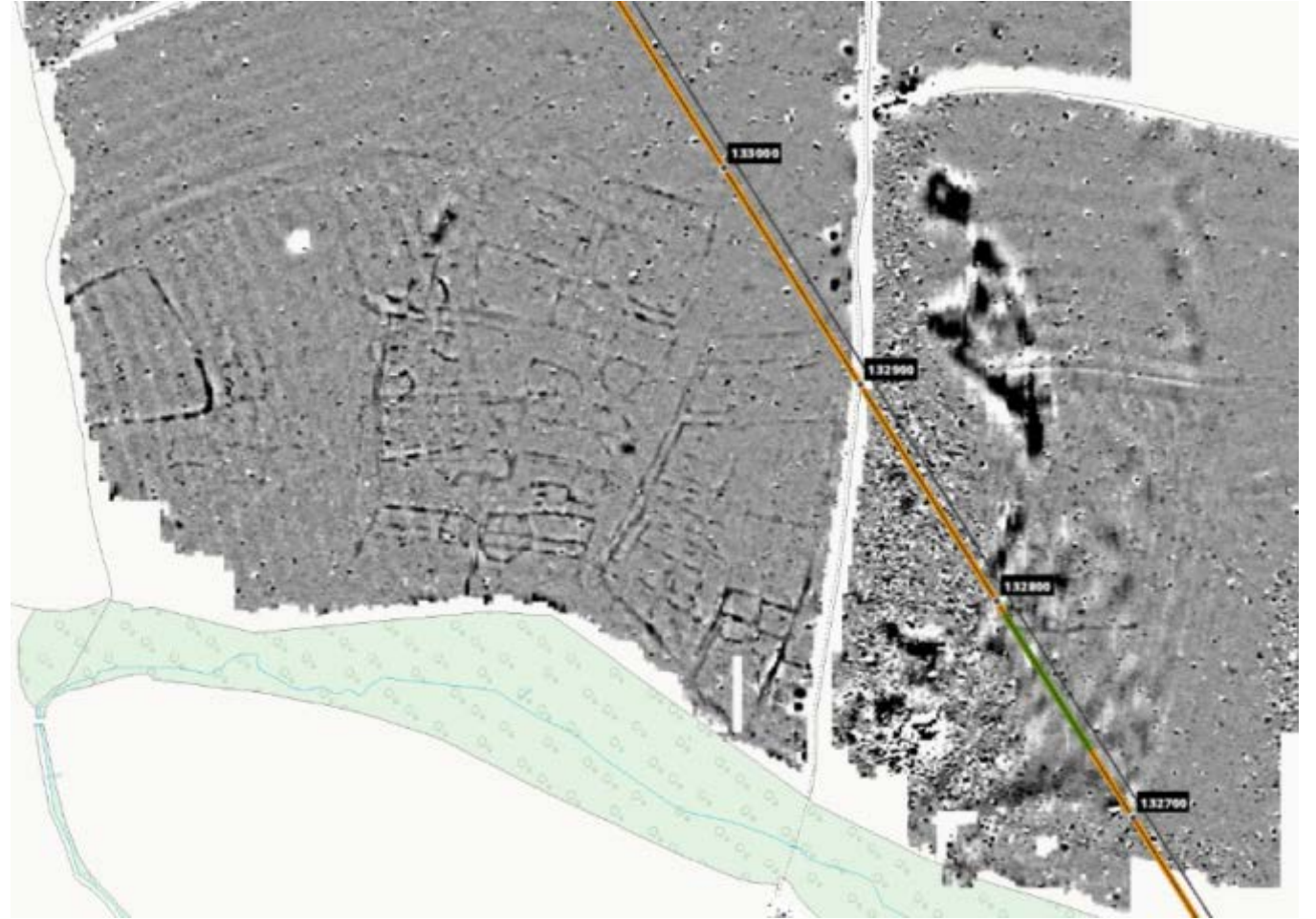
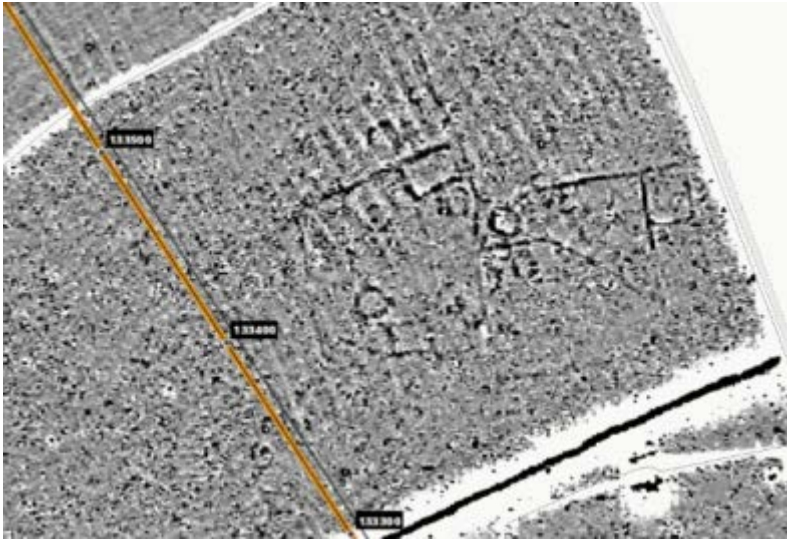
# Area Central: Non-Intrusive Surveys

- Over 1400Ha of geophysical surveys undertaken
- Some extremely promising survey results have been logged
- A large number of previously unidentified late Prehistoric, Romano-British and Medieval sites have been identified



# Area North: Non-Intrusive Surveys

- Over 1100Ha of geophysical survey undertaken
- LiDAR data re-appraisal
- Extensive desk-based research
- Some variability in the results
- Some new sites identified



# Area South: Built Heritage

A range of built heritage surveys have been undertaken to date:

- DB Cargo Shed
- National Temperance Hospital
- Short Stabling Shed, Old Oak Common
- Euston Square Railings
- Burial Monuments, St James's Gardens
- 14 & 15 Melton Street
- Setting assessments



# Area Central: Built Heritage

- Glebe House, Stone
- St Mary's Church
- Setting assessments



# Area North: Built Heritage

- Fox and Grapes
- Former Midland Works
- Former Saltley Carriage Works
- Old Curzon Street Station
- Stable Block, Stoneleigh Park
- Aston Church Road Bridge & Saltley Viaduct
- Former Waterboard Cottages



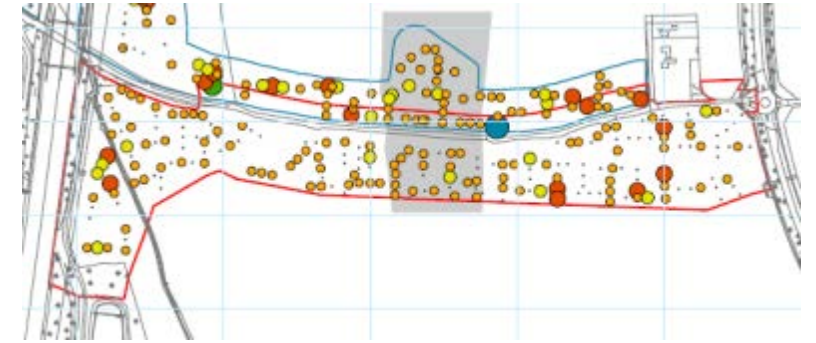
# Area South: Intrusive Surveys

- Cophall
- Mornington Terrace
- St James's Gardens
- Colne Valley
- Various Utilities Works



# Area Central: Intrusive Surveys

- Little Halings Wood
- Harvill Road
- Ashwells Farm
- Several sites in the Colne Valley
- Mill House Farm
- Fleet Marston
- Doddershall Embankment
- Calvert
- Moat Farm
- Turweston Manor
- Windmill Hill
- North Lower Thorpe
- Oaks Farm
- Various Utilities Works





# Area North: Intrusive Surveys

- Handsacre
- Ryknield Street
- Streethay
- Coleshill Manor
- Park Street Burial Ground
- Curzon Street
- Long Itchington Wood – River Leam
- Thorpe Rough
- Hints Cutting
- Dalehouse Lane
- Finham Brook
- Drayton Lane
- M42 Jct 7a – Coleshill Park
- Water Orton
- Crewe Farm
- River Leam – Stoneleigh Park
- Various Utilities Works

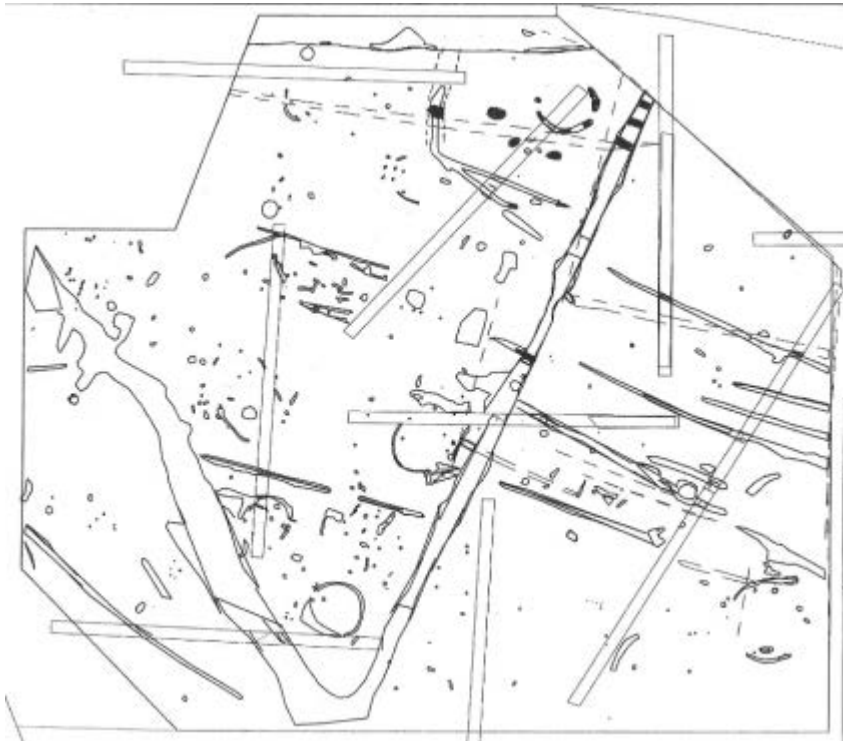


# Area South: Archaeological Mitigation



# Area North: Archaeological Mitigation


- Streethay
- Park Street Burial Ground
- Coleshill Manor




# HERs and HS2

Suzy Blake (Staffordshire County Council)

# Challenges

- ▶ Long period of construction
  - ▶ Phased Construction
  - ▶ Variety of contractors and sub-contractors
  - ▶ Potential for large quantity of Data
  - ▶ HER Resources
  - ▶ Multiple Local Authorities
- 

# Opportunities

- ▶ HERDS Framework
  - ▶ Potential for Innovation
  - ▶ Enhancement of HERs
  - ▶ Two-Way Data Sharing
  - ▶ Potential to Influence Outputs
- 

# Work to Date

- ▶ Contact with HERs
  - ▶ Identification of Issues
  - ▶ Use of OASIS
  - ▶ Assessing Role of HERs
  - ▶ HS2 GIS Outputs
  - ▶ HS2 HERDS Digital Platform
- 