

# ARCHAEOLOGICAL VOLUNTEERING IN THE LAKE DISTRICT NATIONAL PARK



**Eleanor Kingston**  
**Lake District National Park Authority**

# **LAKE DISTRICT NATIONAL PARK ARCHAEOLOGY SERVICE**

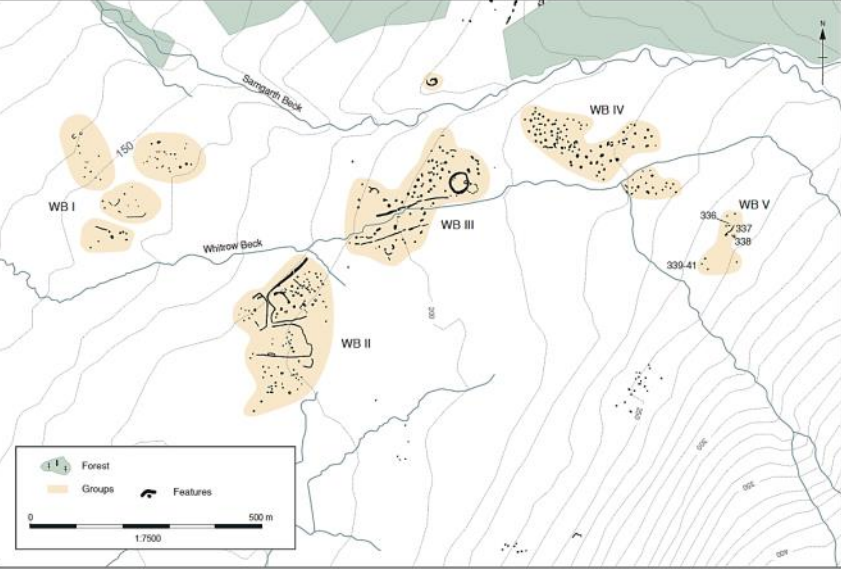
- **2 members of staff (Eleanor Kingston and Louise Martin)**
- **Lake District Historic Environment Record (HER)**
- **Survey work (to update the HER)**
- **Conservation work**
- **Advice on planning applications and other land management**
- **Community and volunteer projects**



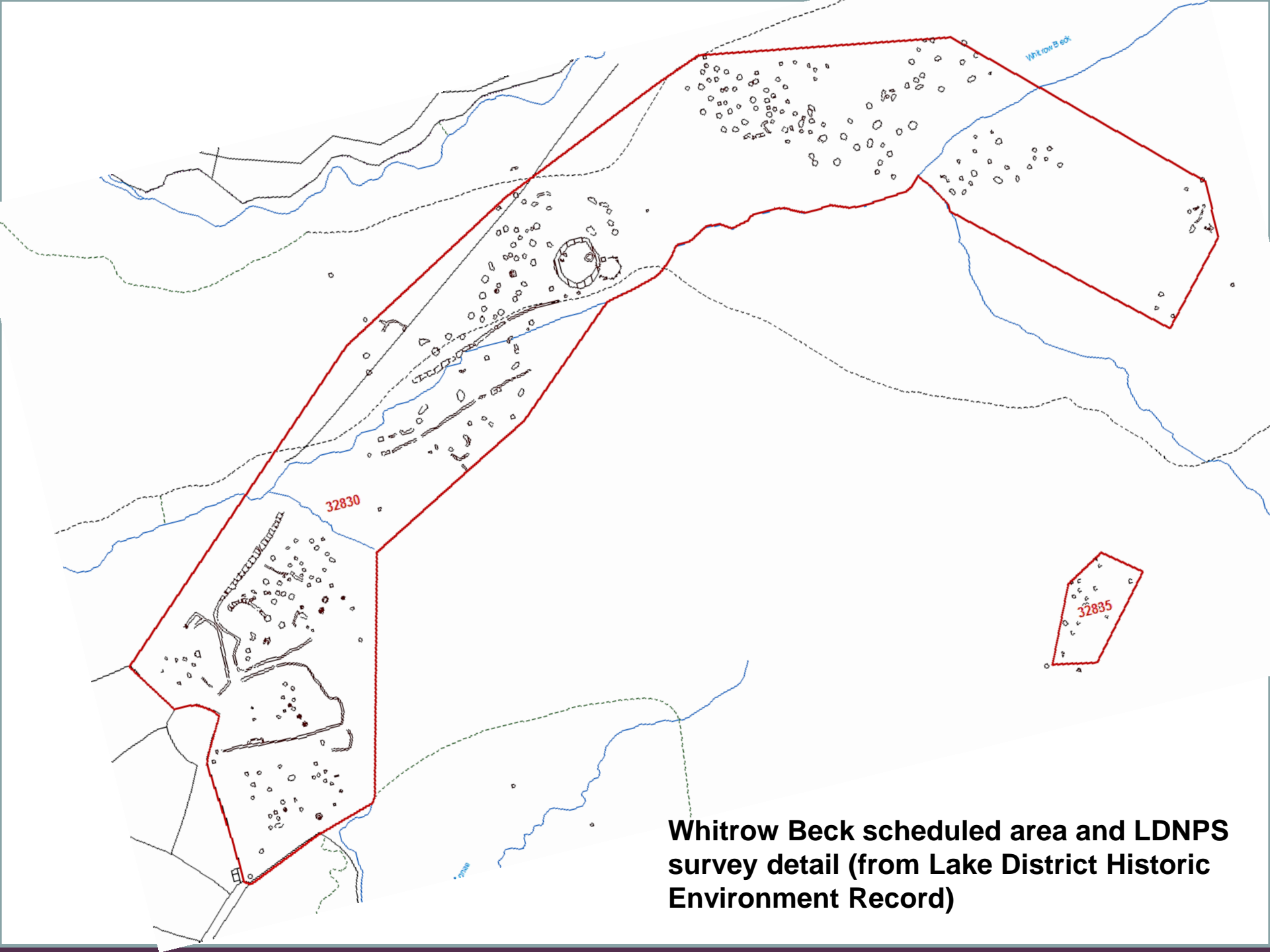
LANCASTER  
IMPRINTS

CAIRNS, FIELDS, AND  
CULTIVATION  
ARCHAEOLOGICAL LANDSCAPES OF  
THE LAKE DISTRICT UPLANDS

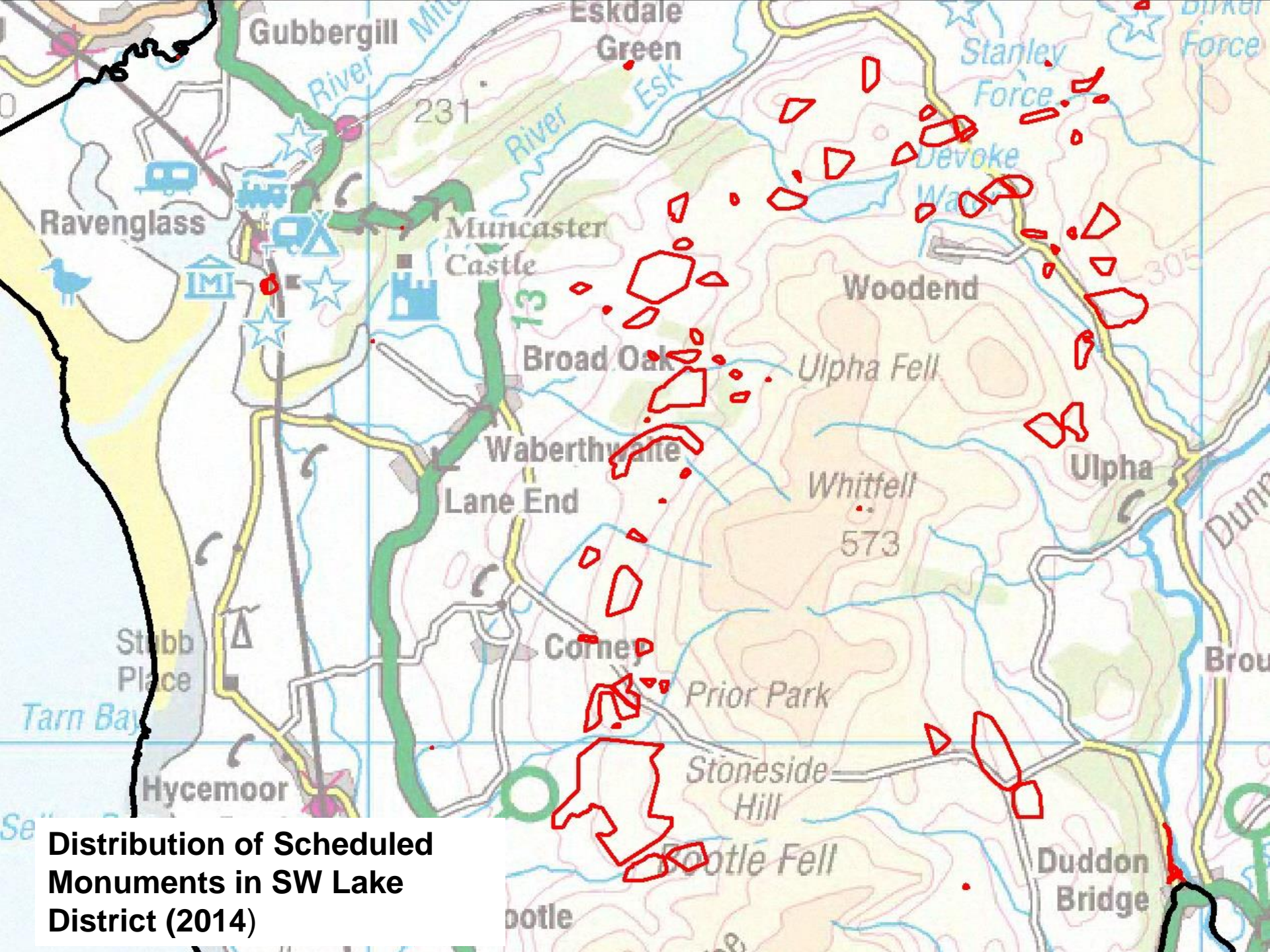
- Lake District National Park Survey in 1980s
- Information from the survey has been used for designating scheduled monuments and for conservation



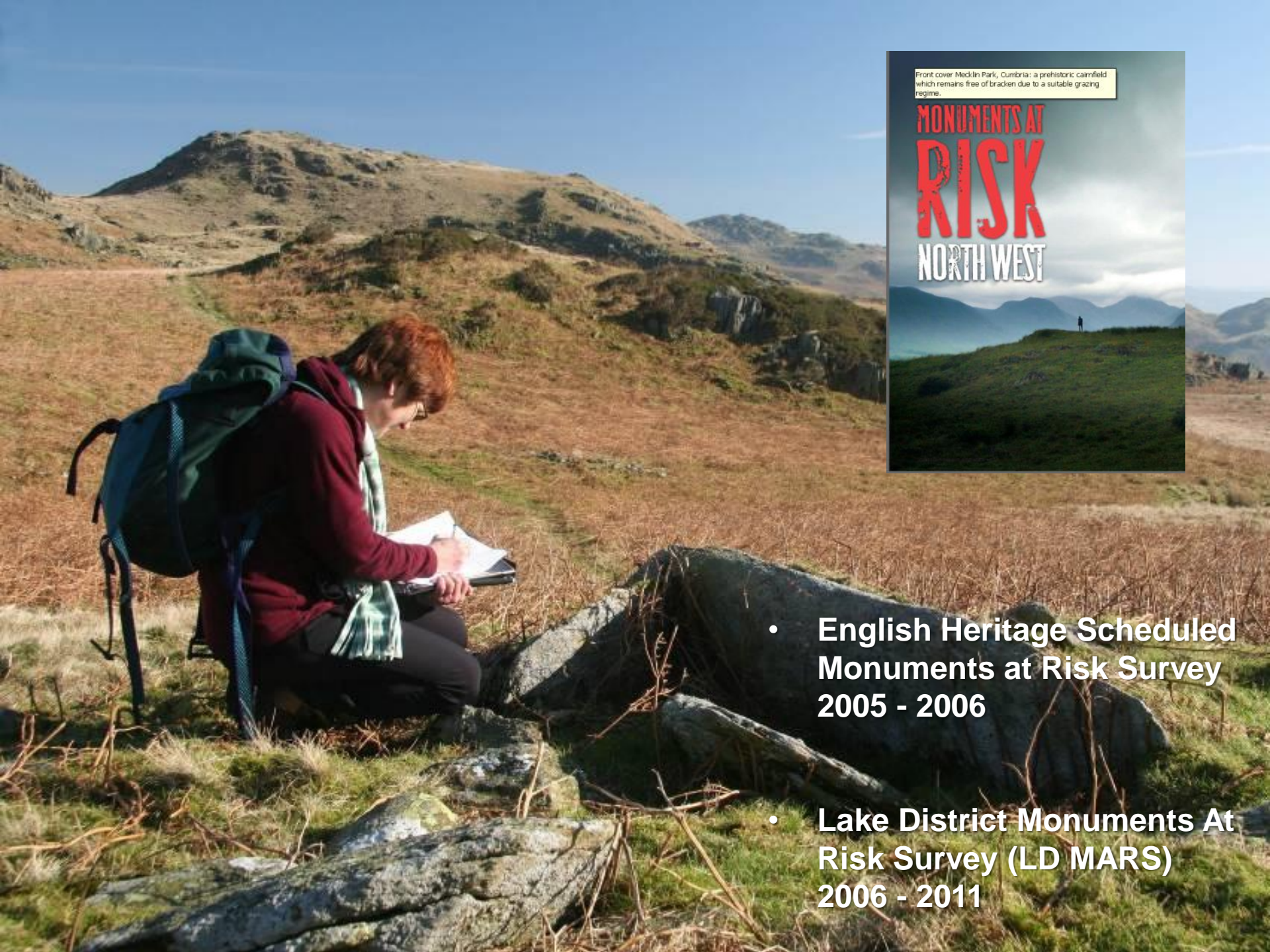
**Enclosed settlement and cairns at Whitrow Beck (J Quartermaine)**



**Whitrow Beck scheduled area and LDNPS survey detail (from Lake District Historic Environment Record)**



**Distribution of Scheduled Monuments in SW Lake District (2014)**



Front cover Meeklin Park, Cumbria: a prehistoric cairnfield which remains free of bracken due to a suitable grazing regime.

# MONUMENTS AT RISK NORTH WEST

- English Heritage Scheduled Monuments at Risk Survey 2005 - 2006
- Lake District Monuments At Risk Survey (LD MARS) 2006 - 2011





**Volunteers clearing bracken at Smithy Beck settlement, Ennerdale, 2010.**





- Lake District Archaeology Volunteer Network launched in February 2013
- Kasia Litwa – CBA Community Archaeology Trainee
- 68 full Volunteers
- 9 Archaeology Volunteer Supervisors
- 17 Network Members
- Active programme of training, conservation and survey
- 2 annual bulletins



## Caring for

Vision for the National Park

Policies and hot topics

Projects

Lake District National Park Partnership

Lake District Communities Fund

Sustainable Development Fund

### Volunteering

- ▶ What you can do
- ▶ Types of opportunities
- ▶ Current opportunities
- ▶ Corporate volunteering
- ▶ Young Rangers
- ▶ [Archaeology Volunteers](#)
  - ▶ Romans in Ravenglass

State of the Park Report

Local Access Forum

Windermere Lake User Forum Minutes

Useful links

Have your say



Archaeological survey of a ring cairn at Seathwaite Tarn

[Home](#) > [Caring for](#) > [Volunteering](#) > [Archaeology Volunteers](#)

## Archaeology Volunteers

Do you want to know more about the archaeology of the Lake District? Would you like to get involved? We can provide opportunities to take part in archaeological survey and conservation. We also offer training and social events.



### Volunteer opportunities

#### Lake District Archaeology Network Member

If you would like to get involved occasionally, without a formal commitment, you can become a member of our Archaeology Volunteer Network.

Benefits for you:

- Better understanding of archaeology and the historic environment



Strimmer training, High Wath, June 2013





Training event at Carrock Fell Neolithic enclosure









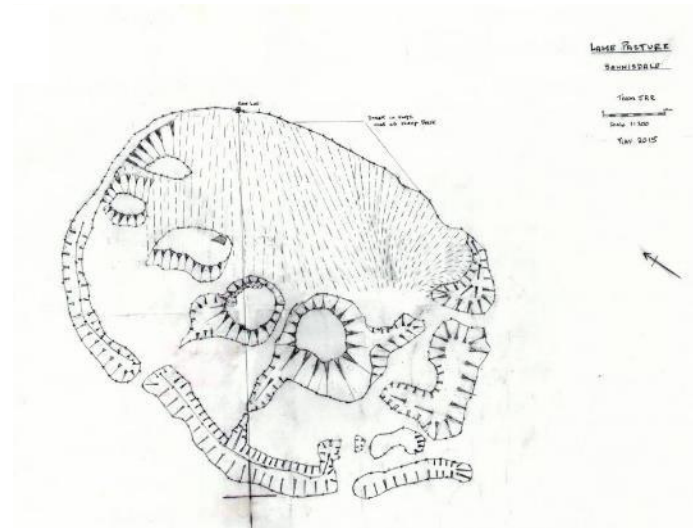
**Volunteers surveying a Bronze Age ring cairn at Seathwaite Tarn, Duddon**



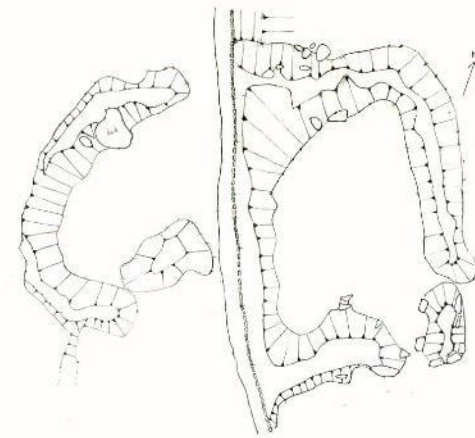




Lamb Pasture survey



Linewath survey





**LOTTERY FUNDED**



**Windermere Reflections Project - Banks Quarry, Langdale**













**SM 32832 – Great Grassoms  
prehistoric cairnfield,  
funerary cairns and medieval  
dispersed settlement**





---

| Year  | 2010-11 | 2011-12 | 2012-13 | 2013-14 | 2014-15 | 2015-16 | 2016-17 | 2017-18 | 2018-19 | 2019-20 |
|---|---------|---------|---------|---------|---------|---------|---------|---------|---------|---------|
| <b>At High Risk and on the At Risk Register</b> | 89      | 79      | 71      | 71      | 59      | 39      | 30      | 26      | 22      | 21      |
| <b>Total Number of Scheduled Monuments</b>      | 273     | 273     | 273     | 281     | 281     | 281     | 281     | 281     | 283     | 287     |

---



# Lake District

Archaeology Volunteer  
Network