

Natural capital, ecosystem services and the historic environment



Dr Hannah Fluck
Head of Environmental Strategy

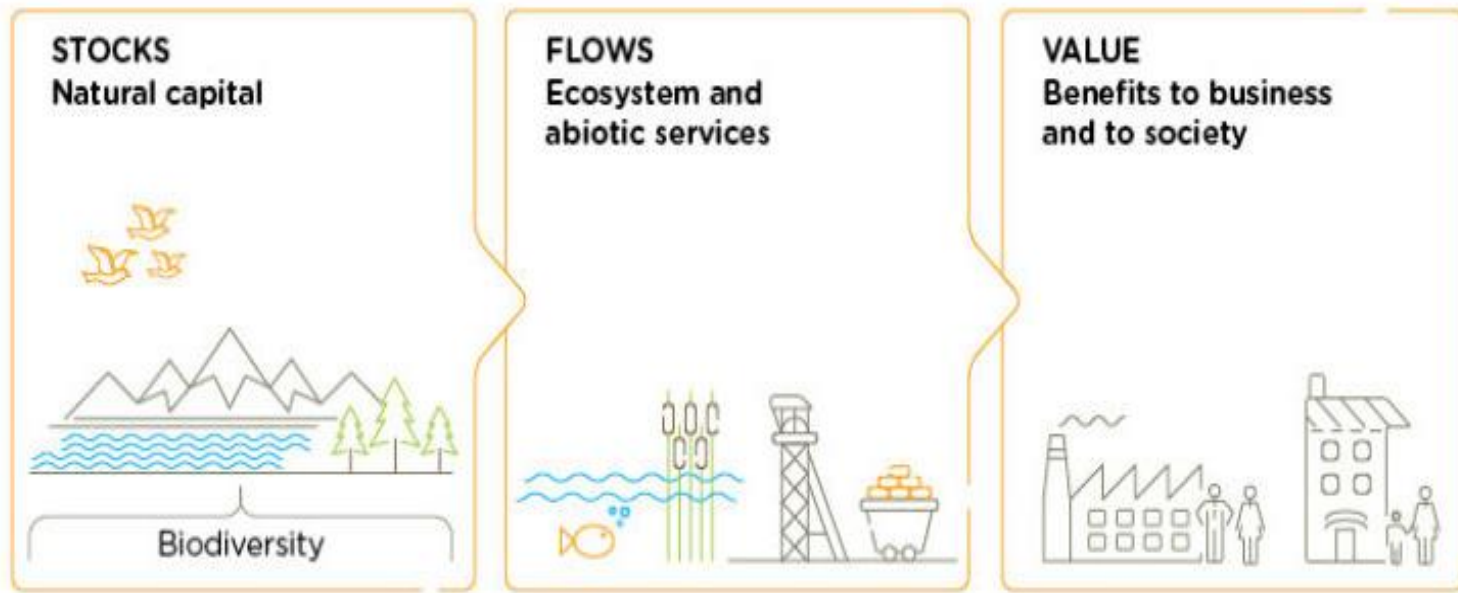
Hannah.Fluck@HistoricEngland.org.uk
@hannahfluck

Natural capital, ecosystem services and the historic environment

- What are natural capital and ecosystem services?
- Why do they matter?
- How does the historic environment fit in?
- What is Historic England doing about it?
- What you can do



What is natural capital?



from <https://naturalcapitalcoalition.org/natural-capital/>

- Internationally recognised
- ‘the stock of renewable and non-renewable resources (e.g. plants, animals, air, water, soils, minerals) that combine to yield a flow of benefits to people’ Natural Capital Coalition
- Considered by economists alongside other forms of capital e.g. financial, manufactured, social, human, and intellectual capital

But from the way it is used it might better be described as environmental capital

What are ecosystem services?

Provisioning services

The products obtained from ecosystems such as food, fibre, fuel and fresh water, also genetic resources

Regulating services

The benefits obtained from the regulation of ecosystem processes including carbon capture, air quality, pest control, pollination, water purification and regulation.

Cultural services

The non-material benefits that people obtain through recreation, reflection, relaxation and aesthetic experiences, sense of place and spiritual enrichment.

Supporting services

such as nutrient cycling, oxygen production and soil formation. These underpin the 'provision' of all the other service categories. (LUC 2009)

Why does natural capital matter?

(borrowed from Dr Tricia Rice, Natural England)

‘Natural Capital is an approach that when combined with existing knowledge and expertise will help us improve the environment’

It enables us to:

- Evaluate the state of our natural environment within a consistent framework
- Improve our understanding of the multiple benefits we receive from the environment
- Prioritise actions to improve the environment so the benefits continue to flow
- Talk about the environment in economic terms
- Encourage further investment in the environment



Why does natural capital matter to the historic environment? ...

...Facing future challenges

- EU Exit
- 25 year Environment Plan
- Agriculture Bill
- Environment Bill
- Climate change reporting
- Catchment management



Underpinned by 'public environmental goods and services' (aka natural capital and ecosystem services)

Public goods and services, natural capital and ecosystem services increasingly seen by Government as underpinning environmental decision making and management. The historic environment has been left out of these approaches.



HM Government

A Green Future: Our 25 Year Plan to Improve the Environment



Where does the historic environment fit in?

- The historic environment is integral to the environment, it underpins natural capital assets
- Heritage assets can be natural capital assets
- Heritage assets can and should be included in natural capital accounts
- Heritage assets support flows of ecosystem services, not just cultural services



What are Historic England doing?

- **Literature review** of historic environment in natural capital
- **Commissioned projects** to explore how the historic environment might be incorporated into a natural capital approach
- Working with Natural England to develop **good practice guidelines**
- **Valuation of historic environment** through research projects
- Working with DCMS on developing a '**Cultural Heritage Capital**' approach
- **Advocating for relevance of historic environment** to wider environment policies, and to NC and ES approaches



Blackdown Hills AONB case study -
An integrated approach to valuing heritage -
Field boundaries and landscape features

Project 7740

Heritage, natural capital and ecosystem services:
Coastal grazing marshes

PLACE SERVICES



Heritage, Natural Capital and Ecosystem Services

Peak District Drystone Walls
Lower Severn Vale Linear Features
Buildings and their boundaries



Fjordr Marine and Historic Environment Consulting

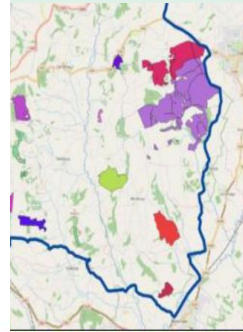
Heritage, Natural Capital & Ecosystem Services
Project Introduction Meeting
Historic England, 23 March 2018

Tyne to Tees Marine Case Study
Dorset Stour Case Study

Antony Firth
Fjordr Limited

www.fjordr.com

John Powell
Jeremy Lake
Rob Berry



Heritage, natural capital and ecosystem services:

Kent Coastal and Marine



Preliminary results

- It is possible to include heritage assets in natural capital accounts
- It is possible to describe the ecosystem services that flow heritage assets
- Some of these services can be valued using currently available data
- We need to develop metrics to demonstrate value of other services (especially cultural)
- There are no simple solutions

A note of caution - Net gain

Natural capital is about showing 'net gain'

- Poses a challenge for development management contexts – some concerns about using this sort of an approach in decision making
- But potentially big benefits for applying in discussions about mitigation – e.g. to public engagement benefits of archaeology

What can you do?

- **Promote the historic environment as environment:** Don't be complacent – promote the relationship between cultural and natural heritage of our environment
- **Promote that heritage assets can be natural capital:** engage with colleagues using ecosystem services and natural capital approaches
- **Promote positive role of historic environment:** Be clear and confident about the positive role of the historic environment – not just mitigation of impact
- **Share** experiences and examples with us and with each other.
- **Let us know what you need:** we are developing guidelines, we are interested to know what you would like to see from this.



The historic environment, natural capital and ecosystem services - summary

- **Considerable risk to historic environment sector if we don't engage** - Natural capital is influencing environmental policy. If the historic environment sector doesn't engage it will be left behind.
- **Historic environment is the environment** - Historic environment, and landscape, underpin natural capital
- **Heritage assets can be identified in natural capital accounts** and it is possible to identify ecosystem services that flow from heritage assets
- **Engaging will improve environment outcomes** - Engaging with natural environment colleagues in these approaches will improve outcomes for the environment.
- **No simple solutions** - There are no 'perfect' answers, even for natural environment natural capital

Any questions?

Hannah.Fluck@HistoricEngland.org.uk
@hannahfluck