



Historic England

HIAS update Dec 2019:

NRHE to HER transfer



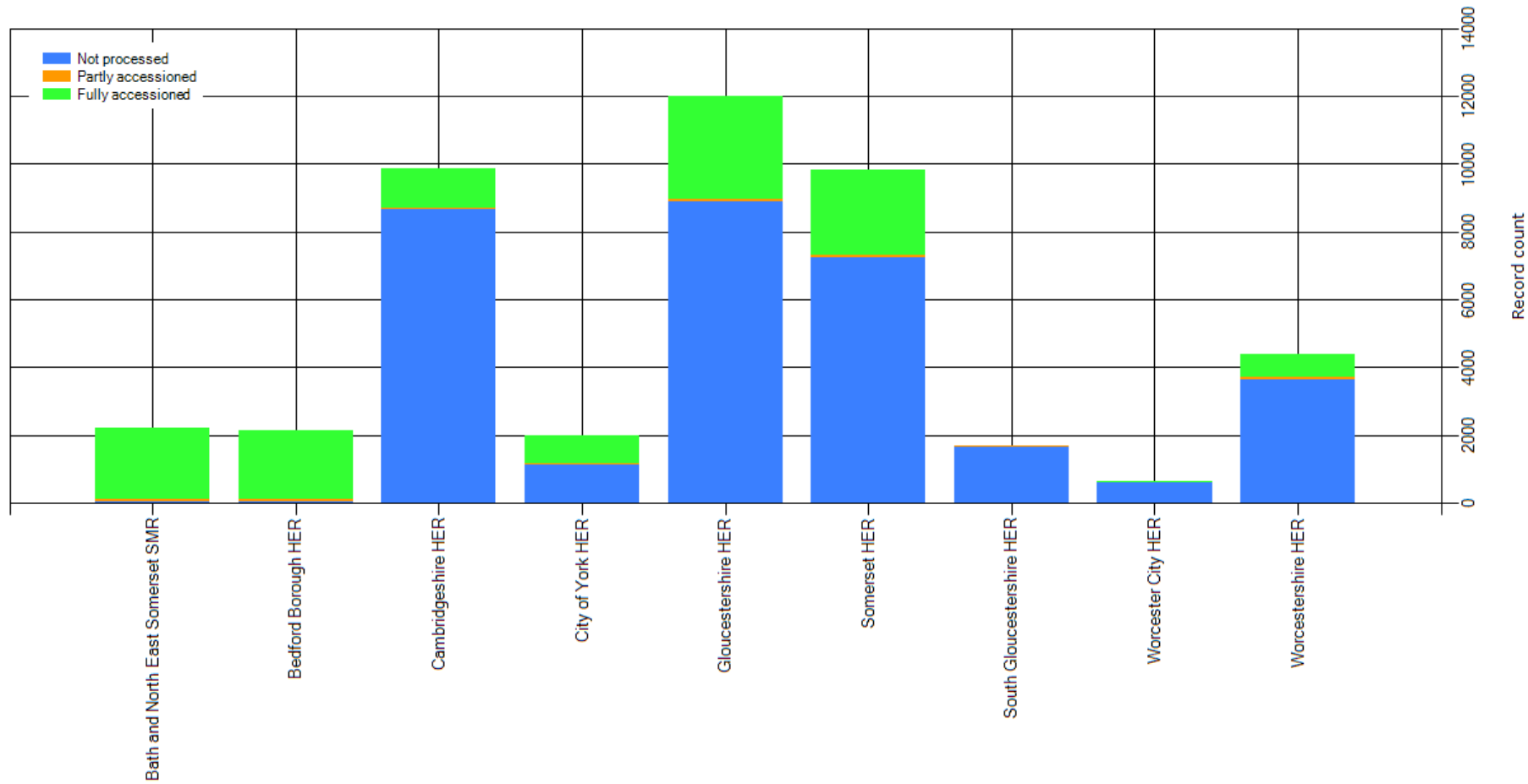
Historic England

Progress with yr 1 projects

Year 1 HER	NRHE records	Records accessioned	Progress
Bath and North East Somerset SMR	3412	3011	88%
Bedford Borough HER	2953	2871	97%
Cambridgeshire HER	14273	2122	15%
City of York HER	3997	1252	31%
Gloucestershire HER	17484	8384	48%
Merseyside HER	4575	2613	57%
Somerset HER	13132	2562	20%
South Gloucestershire HER	2462	0	0%
Worcester City HER	1282	130	10%
Worcestershire HER	6515	980	15%
TOTAL	70085	23925	34%



Historic England





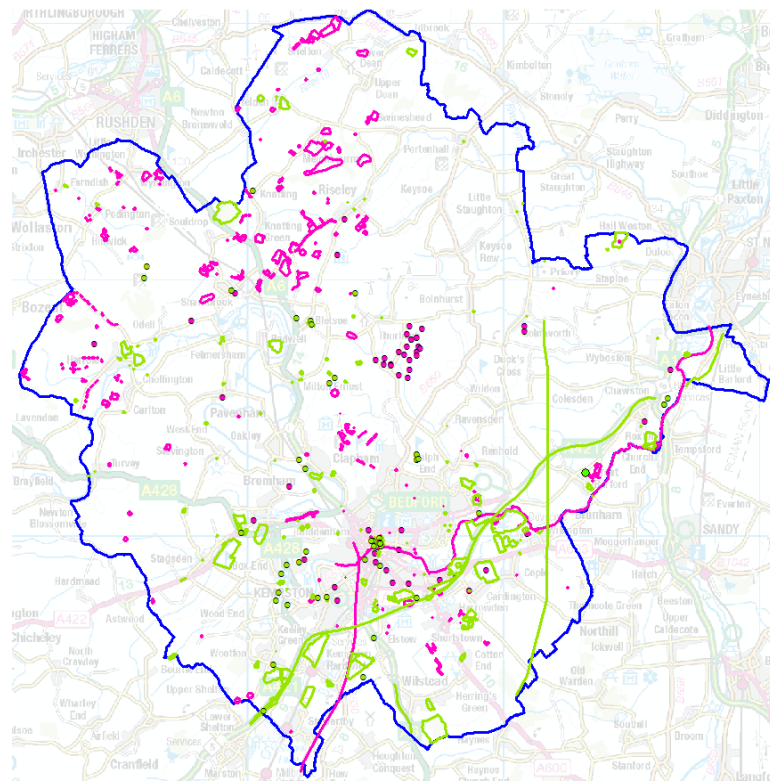
Historic England





Beds Borough feedback

- Challenges:
 - Poorly located data giving rise to variable accessioning rate
 - Matching NRHE point data with NMP polys
- Achievements:
 - 462 new HER records, 2772 enhanced
 - 60% monuments/event polygons modified
 - “valuable contribution to HER” and benefits for land use management & planning





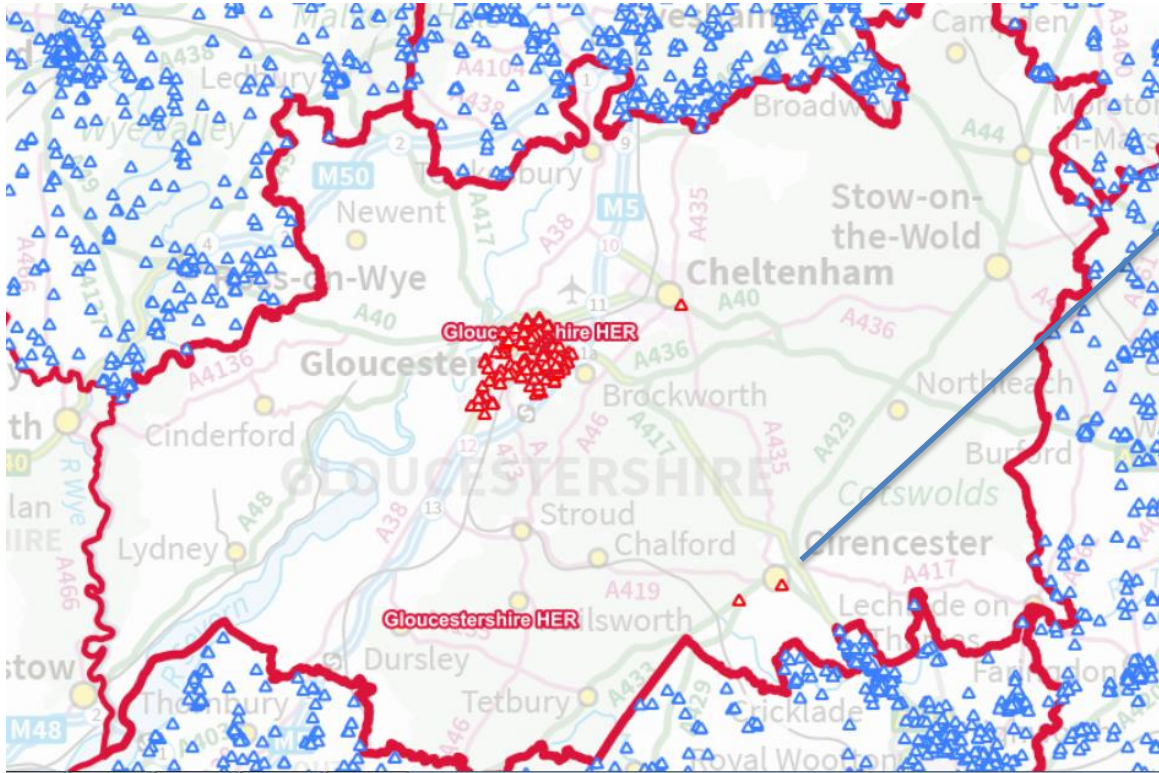
- Accessioning rate reduced to 70 records per day (35% reduction)
 - Variations available to round 1 projects
 - Adjustments offered to round 2 projects
 - Extend accessioning programme by 12-18 months
- Open call for proposals from spring 2020
- Flexibility of data supply – csv exports available on request for data that can be bulk loaded e.g. compiler



- Guidance around supporting information
 - NRHE helpdesk will help where records are missing core information
 - Request for HERs to make requests in bulk
 - HERs should contact HE Archive directly where copies of sources are requested above and beyond core information
- NRHE with poor quality information
 - Unique records should be entered as they may be the only record & signpost to further info
 - Relax accessioning requirements where NRHE adds no additional information to HER
 - Pragmatic approach to resolving issues



Historic England



653285:SHEPTONS

nrhe-to-her.esdm.co.uk/NRHE/Record

Record Accessioning Q & A

Event record details

[View map](#)

Identifiers ?

Identifier type	Identifier value
UID	653285
Name	SHEPTONS

Event type ?

Watching Brief

Dates ?

Start date	End date
01-Jan-71	31-Dec-71

Description ?

Listed as watching brief/survey. Not further specified.

Sources ?

None recorded

Location ?

Coordinates

400000:200000

CDP

County	District	Parish
--------	----------	--------